

VOLUME 47

NUMBER 3



JULY 2017

ISSN 0734-8495

TOPEKA, KANSAS

TOPEKA GENEALOGICAL SOCIETY

2717 SE Indiana Avenue

P. O. Box 4048, Topeka, Kansas 66604-0048

Telephone: (785) 233-5762 (Messages)

e-mail: info@tgstopeka.org website: <http://www.tgstopeka.org>

BOARD OF DIRECTORS 2017

President	Marty FLANAGAN
Vice President	Garry MACHA
Recording Secretary	Cindy CRUZ
Corresponding Sec.	Nancy BROCK
Treasurer	Phil WILKES
Director at Large	Norm STAHL
Library Director	Lyn HUTCHINSON
Past President	Eadie FLICKINGER

Committees:

Library	Lyn HUTCHINSON
Education	Terry STAHL
Research & Records	
Preservation	Brenda KELLY
Finance	Phil WILKES
Information Technology	Dave HASLETT
Publicity & Public Relations	Rich McREYNOLDS
Membership	Nancy APPELHANZ
Administration	Vacant

Meetings: Held the fourth Thursday of each month, except April, November and December, 7:00 pm, at the Topeka & Shawnee County Public Library, 1515 SW 10th Avenue. Members are also invited to attend Board meetings which are held on the second Thursday of each month, at the TGS Library. Please see the calendar, posted on the Society's website, for a schedule of all TGS meetings and educational offerings.

Membership: Open to anyone with an interest in genealogical research. The purposes of TGS are to stimulate a popular interest in family history, to seek genealogical and historical knowledge, to preserve and perpetuate the records of our ancestors and to collect and publish genealogical source materials, particularly of Shawnee County and other counties in Northeast Kansas. TGS is a 501(c)(3) nonprofit organization. Gifts to the Society are tax deductible, actively solicited and most welcome.

TGS is a member of the Kansas Council of Genealogical Societies (**KCGS**), the Shawnee County Historical Society (**SCHS**), the Federation of Genealogical Societies (**FGS**) and the National Genealogical Society (**NGS**).

Dues: \$25 per year Individual membership, \$35 Joint membership for two members living at same address or \$10 Student membership with eligibility limit of 25 years of age. For Canadian membership please add \$10. For a printed/mailed *Quarterly* and *News & Views* add \$20.

Library Hours: The library, at 2717 SE Indiana Avenue in Topeka, is staffed entirely by Society volunteers. It is open from 1 - 4 pm every Monday, Wednesday, and Thursday; and every Saturday from 9 am to 4 pm.

TGS PUBLICATIONS

STAFF

TGS News & Views Editor	Karen ROBERTSON
TGS Quarterly Co-Editors	Mechelle FOOS
	Brenda KELLY
Contributors	Nancy APPELHANZ
	Alma BAKER
	Marty FLANAGAN
	Dave HASLETT
	Duane HERMANN
	Lyn HUTCHINSON
Quarterly Surname Index	Mechelle FOOS
Publicity	Rich McREYNOLDS

The Society's *News & Views* is published monthly and the *Quarterly* (ISSN 0734-8495) is published on a quarterly basis. Members receive electronically one copy of *News & Views* and the *Quarterly* (with the annual Every Name Index). The *Quarterly* and *News & Views* are mailed to those members that pay the extra \$20.

Queries: Queries are free to members and are printed for non-members, if space is available. Materials published in the *Quarterly* are compiled or collected by members and other interested persons and we encourage submission of articles, especially pre-1900 Kansas related material.

Contributors: No materials contributed can be returned unless requested and accompanied by a SASE; contributed items not used immediately will be filed for possible future use. Please include your name and address along with the details of date and original source of the material. Send to the Society, Attn: *Quarterly* Editor or email to the Editor at tgseditor@tgstopeka.org

Deadline: Submission deadlines are the 18th of December, March, June and September. Neither **Topeka Genealogical Society** nor the *Quarterly* editor or staff assumes responsibility for errors of fact or judgment on the part of the contributors, although obvious errors in material will be checked with the contributor before printing when possible. Established errors will be corrected at the earliest opportunity. Contributors are acknowledged on each article and copyright is reserved to the author of signed materials.

Exchange & Advertising: The exchange of quarterlies, or other genealogical publications and advertising in the *Quarterly*, relating to genealogical pursuits, is encouraged. Contact: periodicals@tgstopeka.org



GENEALOGICAL SOCIETY QUARTERLY

Volume 47, Number 3

ISSN 0734-8495

July 2017

1965 - Fifty Two Years of Genealogical Research - 2017


Topeka Genealogical Society Memorial Library, Topeka, Kansas

TABLE OF CONTENTS

NEWS FROM THE PRESIDENT	54
THE TECH CORNER: What Is The Difference Between A System Image And System Repair Dsic?.....	55
NEW TO THE TGS BOOKSHELVES: April through June 2017.....	63
TRACES THAT REMAIN - Poem by Duane HERRMANN.....	68
TGS ANNUAL PICNIC.....	68
QUERIES.....	68
TOPEKA GIVES.....	69
BENNIE LEE GRAHAM MEMORIAL CEMETERY.....	70
MARINE LANCE CPL KURTIS N CHAPMAN.....	72
SHAWNEE COUNTY MARRIAGE LICENSE APPLICATIONS (LEWIS - LYNCH).....	74
MEMBERSHIP RENEWAL FORMS - Individuals, Societies, Institutions, and Libraries.....	79
PUBLICATIONS AVAILABLE FROM TGS.....	Back Cover

MEMBER SOCIETY OF:



News from the President

by Marty FLANAGAN

Our skill builder classes on Saturday have really filled a need. The extra help on different topics each month has made all of us experts. The real skill builder is the talent our members have and how willingly they have given up their time to help other members learn. TGS is blessed to have all of you as a members.

Many activities are percolating in the background. Here are a few: Building committee sent out survey to members for their feedback; Web committee developing a plan to enhance use by our members; IT committee is working on enhancing our computer system at the library and the best part we are very close to purchasing our overhead scanner. TGS has purchased several webinars on DNA and may buy different subjects if this format becomes popular with you. If DNA is of interest to you visit the library and our librarians will set up the movie for you to enjoy. Do not forget the popcorn... Our library has purchased a complete set of the Silver Books to research your Mayflower ancestor. The 400-year anniversary is coming in 3 years in 2020. If you have ancestors living during the Revolutionary War period, there is a good chance you may have a Mayflower ancestor. TGS purchased the Great Migration Series which includes 25 volumes plus several bound books with unique biographical information on people who came to the colonies during 1620 to 1640. I hope you will come to the library and check out what is new.

Education committee has three more block buster programs left for you to enjoy. August 24 Nicodemus: Children of the Promised Land by Angela SCANLON; September 28, Researching Your Elusive Irish Ancestors, by Barbara SCANLON; And finally, to round out the programs for this year, October 26, Orphan Train Riders in NE Kansas by the TGS Writers Group.

It takes a large neighborhood of members who care to keep TGS the vibrant library it is. Many have left us, but are still watching over from heaven. Their dedication to the library 50 years ago is important to remember when we ask for volunteers. I hope they are proud of

what we are doing.

It is the time of year our nominating committee is looking for members to volunteer for the positions in the next year. The positions up for vote in September are President, Recording Secretary, and Director of Large. If you are interested in taking an active role at TGS, please contact Cindy CRUZ at clacruz32153@aol.com.

There are two librarian positions that are vacant. The 5th Saturday of each month in the year, one for 9AM-1PM and the other 1-4 PM. If you are interested in becoming a librarian, then email me at marty.flanagan@outlook.com.

We will have a training class in August or September for volunteer librarians. Please contact any of your Board of Directors if you would like to serve on a committee or do indexing or many other projects just waiting for that special volunteer, YOU.

The Writers Group headed by Teri STAHL is putting together a resource for you to use at the library. It is a project that will take many hours to complete, but will offer you the ability to come to the library and know just where to find the information you seek. The first meeting we had about 12 volunteers and that is so exciting.

TGS would like to paint the building. It is in great need of an overhaul. We had paint donated but we need volunteer to work on preparing the building and then paint. If this is something you would like to help with, please email me at marty.flanagan@outlook.com.

The TGS library will be closed Saturday, August 5. This is the day of our annual picnic. See page 68 for details about the picnic.

Watch for the surprise announcement coming soon. One of our members has given us a tremendous gift. I promise a picture soon.












The Tech Corner

By Dave HASLETT

What is the difference between a System Image and System Repair Disc?

Before we get started, we want our articles to cover topics you care about. We take requests and would love to hear from you. Send requests to tgstopeka.tech@gmail.com.

Sometimes you hear people or read articles discussing system image backups and then System Repair Discs almost always come up in the conversation. I have heard people discuss them and start interchanging the words as if they are the same thing. It is very important to understand that they are not the same thing, and in fact are very different and we'll discuss both in this article. These two topics are a good extension to our previous articles about data backups.

- ▼  This PC
 - >  Desktop
 - >  Documents
 - >  Downloads
 - >  Music
 - >  Pictures
 - >  Videos
 - >  Windows8_OS (C:)
 - >  LENOVO (D:)

To better understand this discussion one needs to understand how you're a hard drive is organized. You can have one or more physical hard drives but we'll assume you only have one. That one physical drive is usually partitioned into multiple virtual drives such as "C" and "D" as seen in the adjoining image. In this case the Windows8_OS(C:) is the C drive which contains your operating system (e.g. Windows 10) and nearly all other files you use on a daily basis. The LENOVO(D:) is the D drive and it can contain a variety files depending on your manufacturer. Some use the D drive to place an original image of their operating system and of course windows updates do NOT update this image. Some lock the drive so it is read only while others leave the D drive open for use. The point is that you have one physical hard drive partitioned into two virtual drives. You will see more on this as you read the remainder of the article.

What is a System Image and do I need one?

A System Image is a copy of everything on whatever partition you select when performing the System Image operation. Some System Image software allow the user to select partition they wish to image but windows defaults to image the entire drive (all partitions). The Imaging process will copy everything, good, bad, or ugly, so it is actually more than a copy it is an exact duplication, it is an image, it is a System Image because your system is contained on that C drive partition.

Since it is copying everything and the image is not updateable once created, it is normally an operation done on a new PC after the owner has completed configuring all the settings and installed all their application software. Yes, it could be done anytime and as many times as you wish, more on that later. The image then guarantees that if used to restore your PC it will look and behave just at it did when it was imaged. An Image can only be used to restore the PC that created it because the Operating System being imaged is tailored to the PC and it's specific hardware. Using an image copy to restore your PC would only occur if there had been a critical situation where there was no other choice but to start over.

Needing to make a System Image depends on who you ask. Technicians will generally error on the safe side so most will encourage you to create one. An Image is a good idea but there is really no wrong answer here. If you prefer to put yourself in very low risk situations and you sleep better that way, for sure create

one. If you operate a business and your device is a critical part of your operation, yes, create one and on a regular schedule to augment your back procedures. A system image by itself is not a replacement for good backup procedures. If I am doing work for a business I would create a System Image for them once a year. On the other hand, from a practical perspective these images require a sizeable external device to which will cost a few dollars. I have created System Images in the past myself. I have been in the computer business for 36 years and retired for 6. I have seen business situations where an image was a life saver but, although I know it happens, I can't say I know anyone that has used a System Image to restore their personal PC. We will discuss how to create an Image a bit later in the article. In my mind the best time for a System Image is after your new PC has been configured with your personal settings, and all your software has been installed. This is a good time for a snapshot.

What is a System Repair Disc and do I need one?

A System Repair Disc will assist you if your Personal Computer (PC) will not start in the normal fashion. It is similar to the System Image in that it does have the critical Operating System (OS) files necessary for your system to boot and to perform error recovery functions. It does not have any of your personal files and it is not a full image of the OS. The System Repair Disc is always created on an external device and its purpose as already eluded to, is to allow you to boot your PC if it will not boot normally, and it can provide critical assistance in system error recovery functions. Have you ever had to restore an application because all of a sudden it simply stops working correctly or maybe not at all? There are many reasons for this but one is that sometimes software files get corrupted. That can happen to your operating system as well. The system will not boot so your System Repair Disc will allow you to boot and then help identify the corrupted file and fix that for you. There are numerous other error situations where the System Repair Disc can assist. If a System Repair Disc is not available system repairs would be a more complicated issue. Of course there are situations where nothing helps and unless you've created System Image's regularly you may have to reload your PC from the manufacturer's image which means your back to square one. In this case all the operating system updates will have to be downloaded and installed, all the application software will need to be loaded and your personal files can be restored assuming file backup procedures were being followed.

So, creating a System Repair Disc is not an option. You must create one. If you have not, create one soon! It can be created anytime. Once created it is not normally necessary to repeat this procedure for the life of your PC.

How do I create these beasts?

Well know that we know what these two creatures are we and what they are used for we need to discuss how to create them. Fortunately, although you can if you wish, you do not have to purchase any additional software. Windows has got you covered. The procedures are for the different versions of Windows are similar but the terminology changes somewhat and the procedures change as well. In an attempt to keep this simple and direct as possible, I have provided the following links.


Create a System Image

I no longer own a Windows 7, 8, or 8.1 machine for I have moved all my personal equipment to Windows 10. So, I am relying on reputable Web sites for detailed instructions for creating a System Image.

For windows 7:

I was unable to find a clean advertisement free article to link to so I have copied in the following from:
<https://support.hp.com/sg-en/document/c02053303#AbT0>

To create a system image backup for your computer, follow these steps:

1. Click Start , and then click Control Panel.
2. Under System and Security, click Back up your computer.

The Backup and Restore Center opens.

3. Click Create a system image.

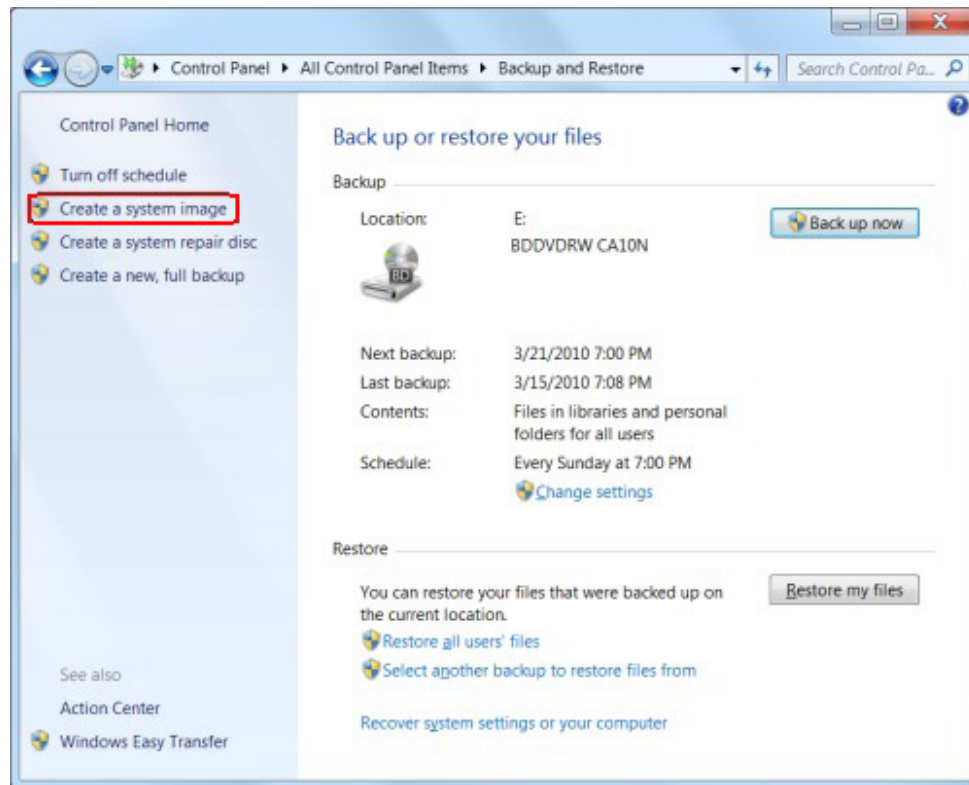


Figure : Creating a system image

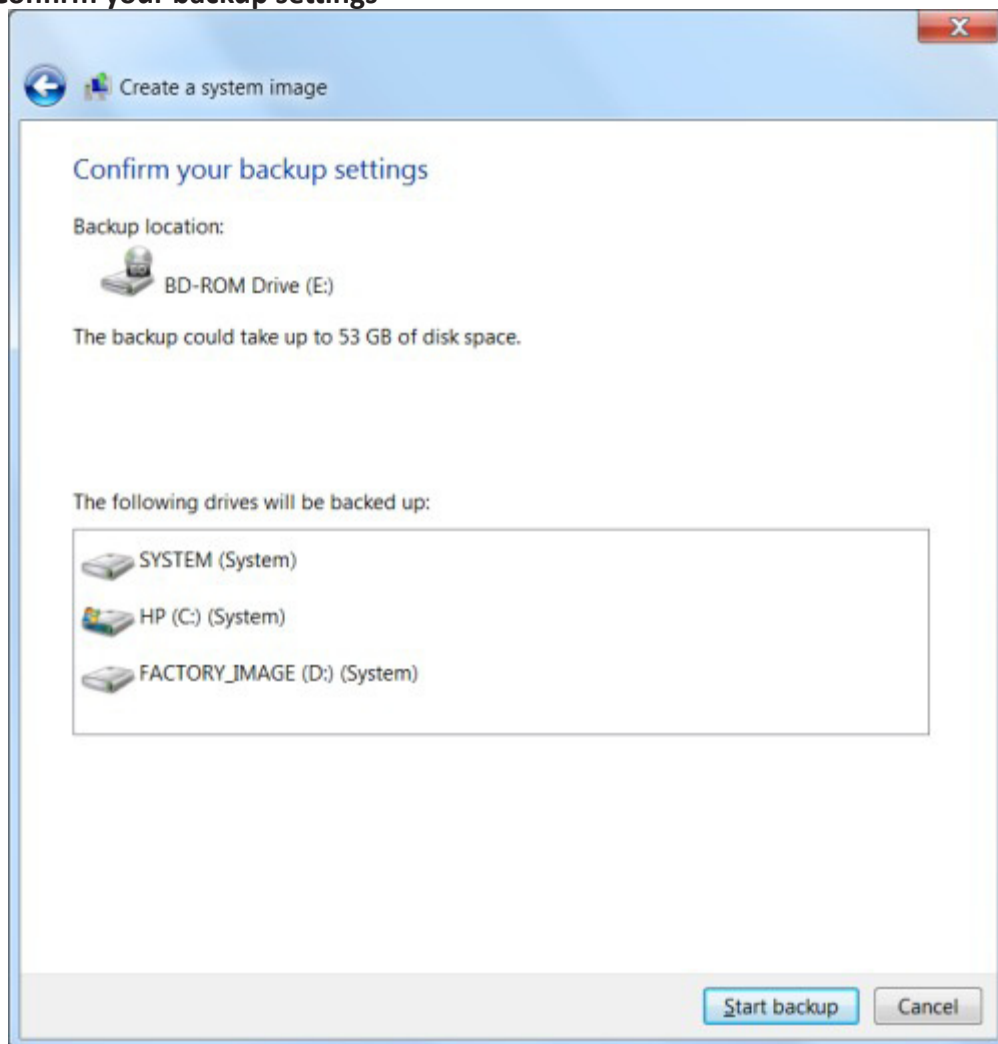
Windows looks for available backup devices, such as a hard drive, DVD burning drive, or network drive.

4. Choose the location to save your system image, and then click Next.
 - On a hard disk
 - One or more DVDs
 - On a network location

Warning: Do not save the backup to the recovery partition: FACTORY_IMAGE or Recovery. Doing so corrupts the HP Recovery information.

5. Confirm the settings, and then click Start backup.

Note: Make sure that you have enough blank space on the external drive or enough blank DVDs to create the system image.

Figure : Confirm your backup settings

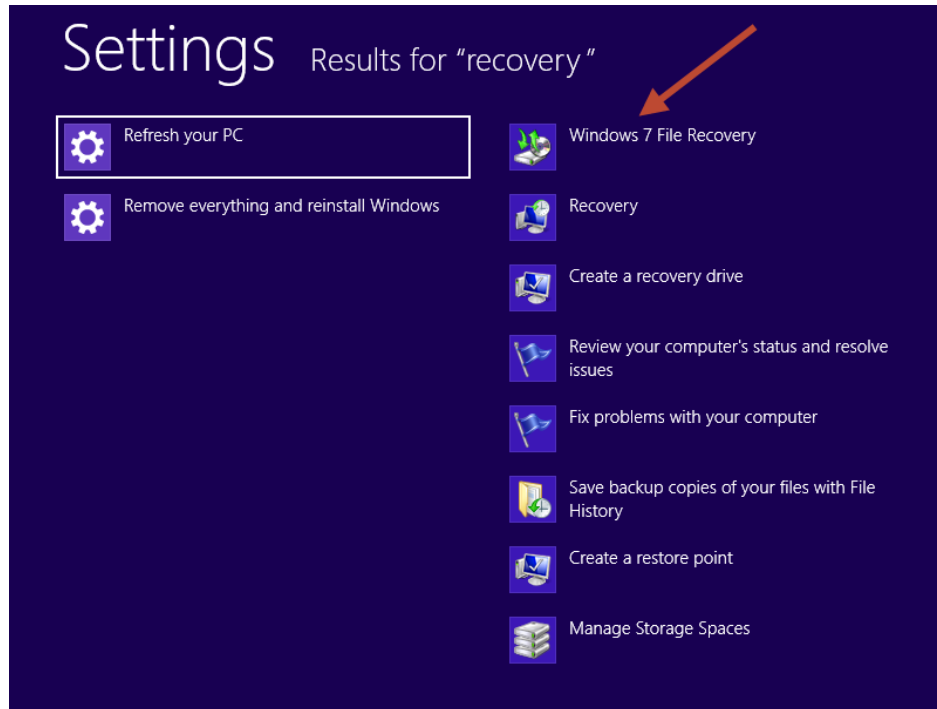
6. Windows will provide a progress bar and if your backing up to DVD's it will prompt you to insert blank DVD's as it needs them, be sure they are blank.

For windows 8:

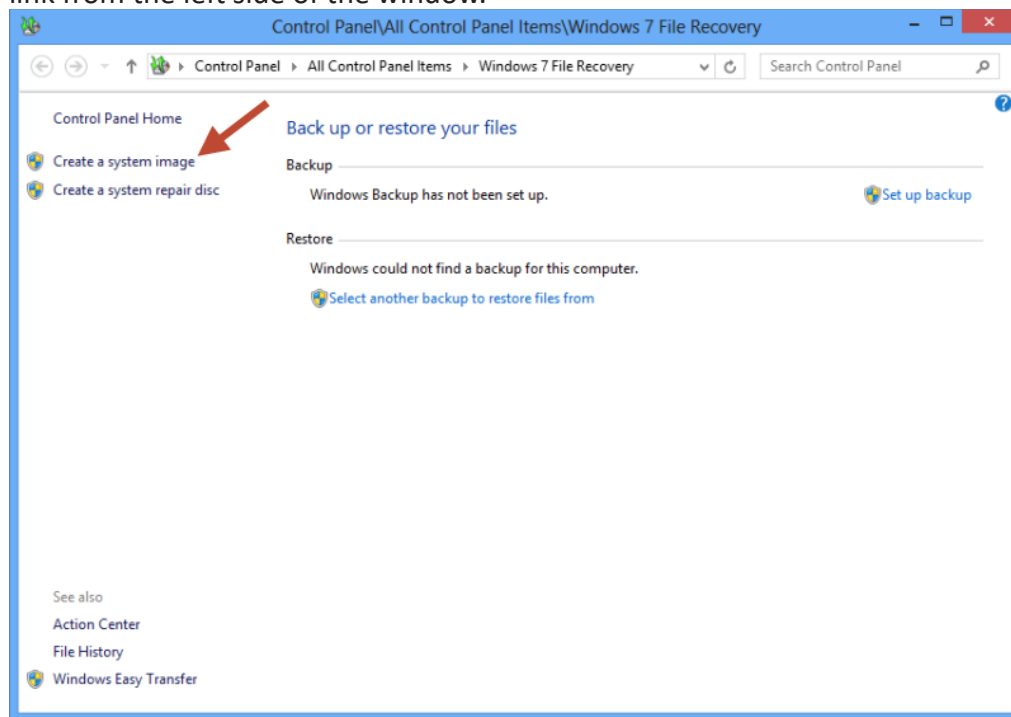
I was unable to find a clean advertisement free article to link to so I have copied in the following from:

<https://www.cnet.com/how-to/how-to-create-a-system-image-in-windows-8/>

Step 1: Search for “recovery” from the Windows 8 Start screen, then select the setting, “Windows 7 File Recovery.”

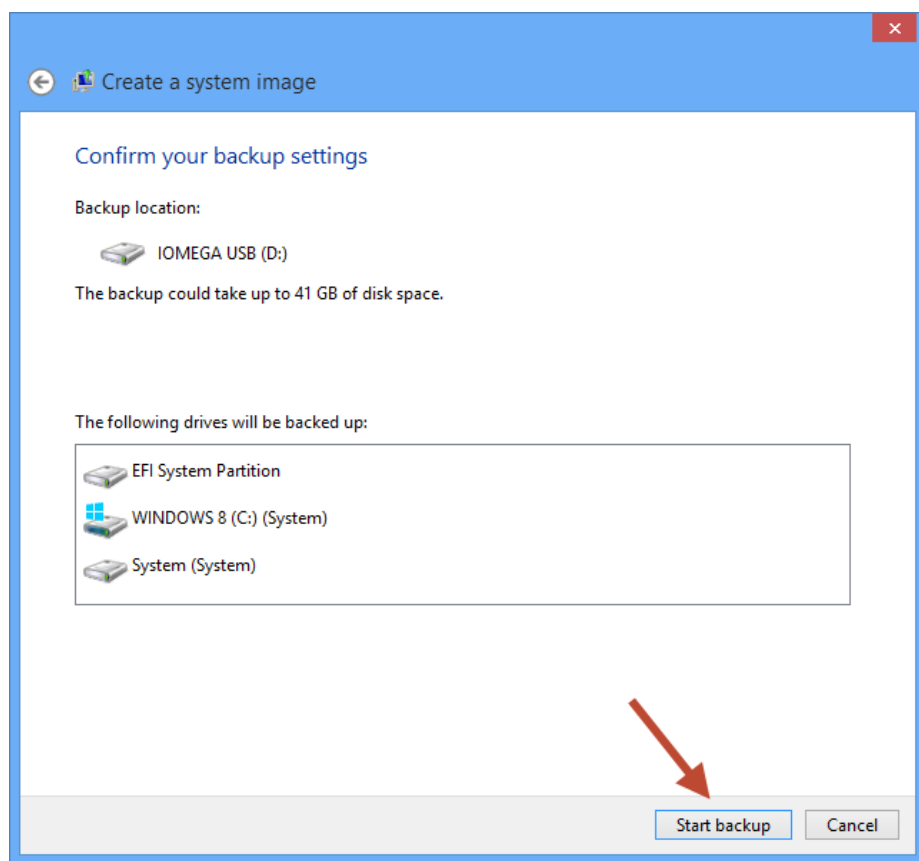


Step 2: Once the Windows 7 File Recovery control panel launches, click on the “Create a system image” link from the left side of the window.



Step 3: Choose where you want to save the system image. You can select an external storage device or burn the image to DVDs. An external hard drive would be preferable here, since a system image can be several gigabytes or more.

Step 4: Confirm that the backup settings look correct, then click the Start backup button.

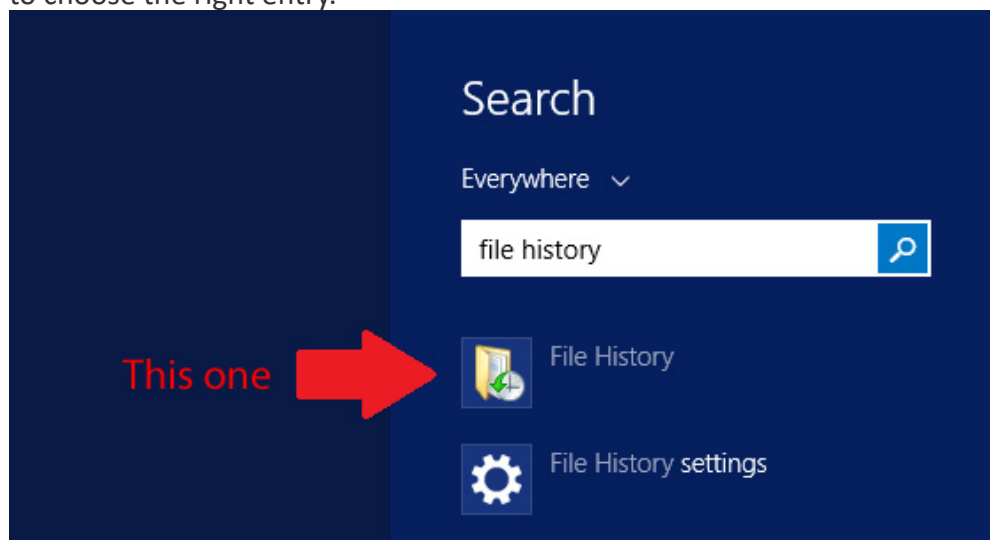


Step 5: Windows will provide you with a progress bar and prompt with instructions depending upon your backup device. When complete store your System Image in a safe place.

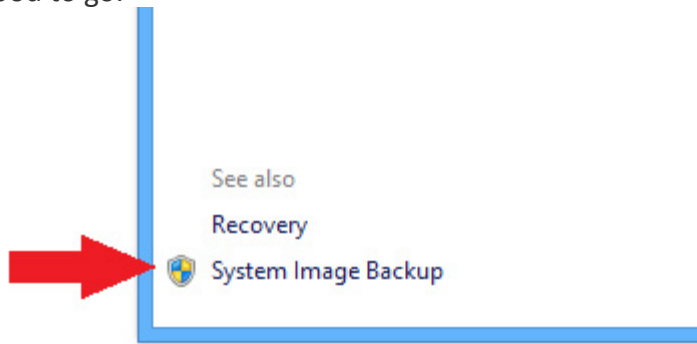
For windows 8.1:

I was unable to find a clean advertisement free article to link to so I have copied in the following from:
<http://winsupersite.com/windows-8/windows-81-tip-use-system-image-backup>

To make a system image backup in Windows 8.1, you must navigate to the File History control panel (and not the main File History interface, which is in the Metro-style PC Settings.) Using Smart Search, be sure to choose the right entry.



In the File History control panel that appears, look in the lower left corner. The option you're looking for is *System Image Backup*. Click that, and the familiar Create a System Image wizard appears and you're good to go.



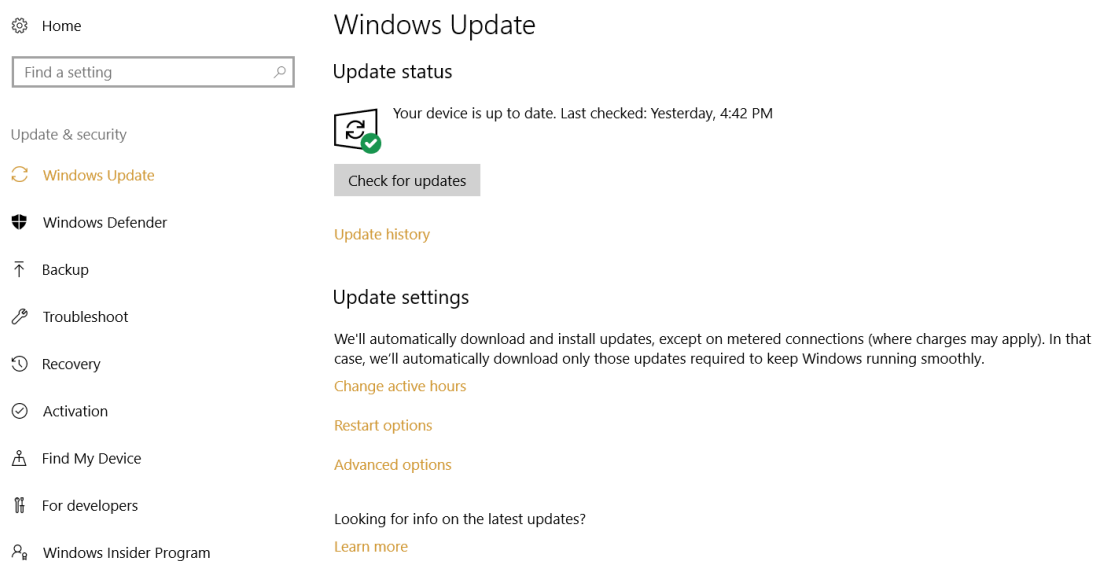
Let's start with the System Image. Then complete the process by referring to Step 2 in the Windows 7 backup procedure above.

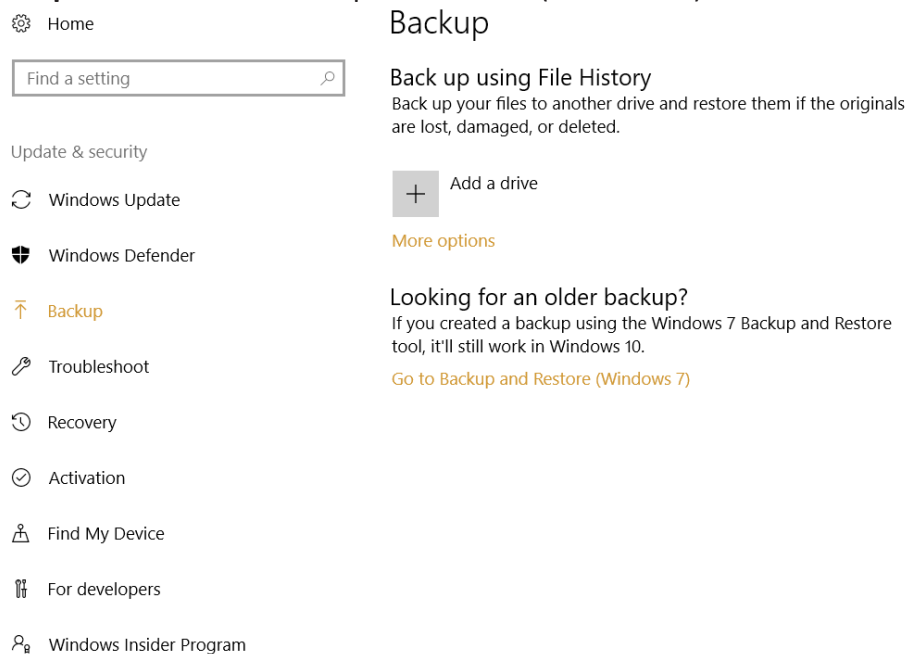
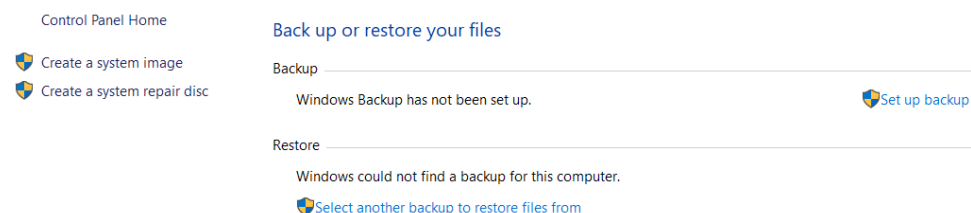
For windows 10:

Step 1: Left click on the Windows icon in the left corner of your taskbar and then click the cogged wheel icon to open Windows Settings.

Step 2: Click the Update and Security box.

Step 3: Click Backup on your left.



Step 4: Click “Go to Backup and Restore (Windows 7)” in the middle of your screen.**Step 5:** Click “Create a System Image”**Step 6:** Select where you wish to save your System Image and click “Next”.

Step 7: Review and Confirm your settings and click “Start backup”. Windows will provide a progress bar and prompt you with instructions depending upon the device your backing up to. When complete save your image in a safe place.

Create a System Repair Disc

Regardless of the Windows version your using, creating a system Repair Disc follows the same procedures as the System Image procedure but instead of selecting the “Create a System Image” when prompted, select “Create a System Repair Disc” instead.

Future Tech Corner articles;

We want our articles to cover topics you care about. We take requests and would love to hear from you. Send requests to tgstopeka.tech@gmail.com.

- Still working on some ideas!

Enjoy your computing!



NEW ON THE TGS BOOKSHELVES

By Lyn HUTCHINSON, Library Director

Books, Microfilms, Periodicals, Cassette Tapes, Maps, CD/DVD and Videos

Received and Processed Through June 2017

Recent additions are categorized by listing miscellaneous and genealogical items first, followed by items sorted as International, United States and individual states. Hyphens separate the data fields which are printed in the following order: Author, Publisher, Title, Year Published, Media Type (if not a book)*, Acquisition Method*, and Library Call Number. Except where indicated, all items are gifts.

*Abbreviations: No Date No Information No Place Drawer# Memorial Purchase Review Trade Unknown Compact
Disk Cassette Tape INDEX MicroFiche microfiLM Tape# Videotape PAMphlet PERiodical REFERENCE OverSized

FAMILY HISTORY/BIOGRAPHY

ADAMS, Johnnie Scott — n.i. — *Adams - ADAMS family* — n.d. — FAM HIST 929.2 Ada ADAMS

CORNILLES, Edwin L. — W. Linn, OR: Author — MCLAUGHLIN & CORNILLES — 2001 — FAM HIST 929.2 Cor McLAUGHLIN

COULTER, Richard E. — Evansville, IN: Evansville Bindery — *Hubbard - My Grandmother HUBBARD's cupboard* — 2005 — FAM HIST 929.2 Cou HUBBARD

MADDUX, Joseph T. — Irwinton, GA: Author — *Maddox - 1500 MADDUX marriages and other statistics* — 1979 — FAM HIST 929.2 Mad MADDUX

MERRITT, Rebecca — n.i. — *Boone County, Indiana: PHILLIPS/PHILLIPS families* — 2000 — FAM HIST 929.2 Mer PHILLIPS

PHILLIPS, Helen L. & James R. SHULTS — n.i. — *Phillips - Jonas PHILLIPS and descendants: Children of the mountains* — 1993 — FAM HIST 929.2 Phi PHILLIPS

SIMS, Kathryn — n.i. — *Vinton - Genealogy of VINTON and related ancestral families* — 1995 — FAM HIST 929.2 Sim VINTON

ZABOKRTSKY, Gary Mitchel — Fairbury, NE: Author — *ZABOKRTSKY and JENIK family military veterans* — 2016 — FAM HIST 929.2 Zab ZABOKRTSKY

FICTION

BONNER, Brynn — New York, NY: Pocket Books — *Dead in a flash* — 2016 — FICTION Bon MYSTERY

GOODWIN, Nathan Dylan — Lexington, KY: n.i. — *Missing man: Morton Farrier, Forensic Genealogist story* — 2017 — FICTION Dyl MYSTERY

HUBALEK, Linda K. — Lindsborg, KS: Butterfield Books — *Butter in the well series, v. 1: Scandinavian woman's tale of life on the prairie* — 1997 — FICTION Hub HISTORICAL

LEE, M J — Lexington, KY: n.i. — *Irish inheritance: Jayne Sinclair genealogical mystery* — 2017 — FICTION Lee MYSTERY

RALEIGH, Cynthia — Lexington, KY: n.i. — *Poison branches* — 2017 — FICTION Ral MYSTERY

LINEAGE ORGANIZATIONS – MAYFLOWER

WOW – Come to the TGS Library and browse through a complete collection of the most current editions of *Mayflower Families* (silver books), *Mayflower Families in Progress* (pink books) and *"The Fortune," 1621* (green books) as published by the General Society of Mayflower Descendants. Maybe you, too, will find an ancestor who came to America on the "Mayflower" or "The Fortune"! (Note: v. 9 is no longer available for purchase. If you have a copy you would be willing to donate to TGS, please contact the Library.)

MACGUNNIGLE, Bruce Campbell, comp — *Mayflower families through five generations, v. 4, 3rd ed.: Edward FULLER* — 2006 — REF LINEAGE ORG 369 MAY v. 4 — P

MCGUYRE, Ruth C. & Robert S. WAKEFIELD (Winslow); HODGE, Harriet (Billington) — *Mayflower families through five generations, v. 5, 2nd ed.: Edward WINSLOW & John BILLINGTON* (see also v. 21) — 1997 — REF LINEAGE ORG 369 MAY v. 5 — P

AUSTIN, John D., ed. — *Mayflower families through five generations, v. 6, 3rd ed.: Stephen HOPKINS* — 2001 — REF LINEAGE ORG 369 MAY v. 6 — P

WAKEFIELD, Robert S., ed. — *Mayflower families through five generations, v. 7, 2nd ed.: Peter BROWN* — 2002 — REF LINEAGE ORG 369 MAY v. 7 — P

TOWNSEND, Charles Delmar (Mrs.), Robert S. WAKEFIELD, & Margaret Harris STOVER — *Mayflower families through five generations, v. 8, 2nd ed.: Degory PRE-IST* — 2008 — REF LINEAGE ORG 369 MAY v. 8 — P

RADACSH, Arthur H. & Katherine Radacsh; rev. by Robert S. WAKEFIELD & Margaret Harris STOVER — *Mayflower families through five generations, v. 10, 2nd ed.:*

- Samuel FULLER — 1996 — REF LINEAGE ORG 369 MAY v. 10 — P
- HILL, Peter B., comp. — *Mayflower families through five generations*, v. 11, pt. 1, 2nd ed.: Edward DOTY - first 5 generations of his children Edward & John — 2009 — REF LINEAGE ORG 369 MAY v. 11, pt. 1 — P
- *Mayflower families through five generations*, v. 11, pt. 2: Edward DOTY - descendants through his children Thomas, Samuel, Desire & Elizabeth — 1996 — REF LINEAGE ORG 369 MAY v. 11, pt. 2 — P
- *Mayflower families through five generations*, v. 11, pt. 3: Edward DOTY - descendants through his children Isaac, Joseph & Mary — 2000 — REF LINEAGE ORG 369 MAY v. 11, pt. 3 — P
- WOOD, Ralph Van, Jr., comp. — *Mayflower families through five generations*, v. 12: Francis COOKE — 1999 — REF LINEAGE ORG 369 MAY v. 12 — P
- SHERMAN, Robert M. & Ruth W. Sherman, comps.; re-ed. by Robert S. WAKEFIELD — *Mayflower families through five generations*, v. 13, 3rd ed.: William WHITE — 2006 — REF LINEAGE ORG 369 MAY v. 13 — P
- WARNER, Russel, comp. — *Mayflower families through five generations*, v. 14: Myles STANDISH — 2007 — REF LINEAGE ORG 369 MAY v. 14 — P
- SHERMAN, Robert M. & Verle D. VINCENT; rev. by Robert S. WAKEFIELD (Chilton); SHERMAN, Robert M., Robert S. Wakefield & Lydia D. FINLAY, comp. (More) — *Mayflower families through five generations*, v. 15: James CHILTON & Richard MORE — 2013 — REF LINEAGE ORG 369 MAY v. 15 — P
- WOODWORTH-BARNES, Esther Littleford, comp.; Alicia Crane WILLIAMS, ed. — *Mayflower families through five generations*, v. 16, pt. 1: John ALDEN, first 4 generations — 2002 — REF LINEAGE ORG 369 MAY v. 16, pt. 1 — P
- *Mayflower families through five generations*, v. 16, pt. 2: John ALDEN, 5th generation descendants of his daughter Elizabeth — 2002 — REF LINEAGE ORG 369 MAY v. 16, pt. 2 — P
- *Mayflower families through five generations*, v. 16, pt. 3: John ALDEN, 5th generation descendants of his sons John, Joseph & Jonathan — 2004 — REF LINEAGE ORG 369 MAY v. 16, pt. 3 — P
- *Mayflower families through five generations*, v. 16, pt. 4: John ALDEN, 5th generation descendants through his daughter Ruth — 2015 — REF LINEAGE ORG 369 MAY v. 16, pt. 4 — P
- *Mayflower families through five generations*, v. 16, pt. 5: John ALDEN, 5th generation descendants through his daughter Sarah — 2016 — REF LINEAGE ORG 369 MAY v. 16, pt. 5 — P
- WAKEFIELD, Robert S. & Margaret Harris STOVER, comps. — *Mayflower families through five generations*, v. 17: Isaac ALLERTON — 1998 — REF LINEAGE ORG 369 MAY v. 17 — P
- WAKEFIELD, Robert S., comp.; Judith H. SWAN, ed. — *Mayflower families through five generations*, v. 18, pt. 1, 3rd ed.: Richard WARREN, 4 generations, naming 5th — 2004 — REF LINEAGE ORG 369 MAY v. 18, pt. 1 — P
- WAKEFIELD, Robert S., comp.; rev by John Bradley ARTHAUD, Jane Fletcher FISKE, & Judith Haddock SWAN — *Mayflower families through five generations*, v. 18, pt. 2, 2nd ed.: Richard WARREN, 5th generation of his children Mary (Warren) BARTLETT, Anna (Warren) LITTLE & Elizabeth (Warren) CHURCH — 2011 — REF LINEAGE ORG 369 MAY v. 18, pt. 2 — P
- WAKEFIELD, Robert S., comp. — *Mayflower families through five generations*, v. 18, pt. 3: Richard WARREN, 5th generation descendants of his children Abigail, Nathaniel & Joseph — 2000 — REF LINEAGE ORG 369 MAY v. 18, pt. 3 — P
- WESTGATE, Alice W. A., comp.; rev. by Peggy BAKER — *Mayflower families through five generations*, v. 19, 2nd ed.: Thomas ROGERS — 2013 — REF LINEAGE ORG 369 MAY v. 19 — P
- SHERMAN, Robert M. & Ruth W. Sherman, comp.; Robert S. WAKEFIELD, ed. — *Mayflower families through five generations*, v. 20, pt. 1: Henry SAMSON, 4 generations, naming 5th — 2000 — REF LINEAGE ORG 369 MAY v. 20, pt. 1 — P
- SHERMAN, Robert M. & Ruth W., FISKE, Jane FLETCHER, comps. — *Mayflower families through five generations*, v. 20, pt. 2: Henry SAMSON, 5th generation descendants through children James, Dorcas, Hannah & Elizabeth — 2005 — REF LINEAGE ORG 369 MAY v. 20, pt. 2 — P
- FISKE, Jane Fletcher, comp. — *Mayflower families through five generations*, v. 20, pt. 3: Henry SAMSON, 5th generation descendants through sons Stephen & Caleb — 2006 — REF LINEAGE ORG 369 MAY v. 20, pt. 3 — P
- HODGE, Harriet W., comp.; rev. by Robert S. WAKEFIELD, rev. by John Bradley ARTHAUD — *Mayflower families through five generations*, v. 21: John BILLINGTON — 2015 — REF LINEAGE ORG 369 MAY v. 21 — P
- WAKEFIELD, Robert S. & Ann Smith LAINHART, comps. — *Mayflower families through five generations*, v. 22: William BRADFORD — 2014 — REF LINEAGE ORG 369 MAY v. 22 — P
- LAINHART, Ann Smith & Robert S. WAKEFIELD, comps. — *Mayflower families through five generations*, v. 23, pt. 1: John HOWLAND, 4 generations, naming 5th through children Lydia, Hannah, Joseph, Jabez, Ruth & Isaac — 2006 — REF LINEAGE ORG 369 MAY v. 23, pt. 1 — P
- LAINHART, Ann Smith & Jane Fletcher FISKE, comps. — *Mayflower families through five generations*, v. 23, pt. 2: John HOWLAND, 5th generation descendants through his children Lydia & Hannah — 2010 — REF LINEAGE

ORG 369 MAY v. 23, pt. 2 — P

— *Mayflower families through five generations*, v. 23, pt. 3: John HOWLAND, 5th & 6th generation descendants of his sons Joseph & Jabez — 2012 — REF LINEAGE ORG 369 MAY v. 23, pt. 3 — P
MERRICK, Barbara Lambert; Scott Andrew BARTLEY, ed. — *Mayflower families through five generations*, v. 24, pt. 1: Elder William BREWSTER, 4 generations, naming 5th — 2014 — REF LINEAGE ORG 369 MAY v. 24, pt. 1 — P
MERRICK, Barbara Lambert, comp. — *Mayflower families in progress: William BREWSTER through his son Love* — 2003 — REF LINEAGE ORG 369 MAY — P

— *Mayflower families in progress: William BREWSTER through his son Jonathan* — 2006 — REF LINEAGE ORG 369 MAY — P

— *Mayflower families in progress: William BREWSTER through his daughter Patience* — 2001 — REF LINEAGE ORG 369 MAY — P

SOULE, John E. & Milton E. TERRY; rev by Louise Walsh THROOP — *Mayflower families in progress: George SOULE, 1st ed., pt. 1 (family numbers 230-349)* — 2000 — REF LINEAGE ORG 369 MAY pt. 1 — P

— *Mayflower families in progress: George SOULE, 1st ed., pt. 2 (family numbers 350-464)* — 2002 — REF LINEAGE ORG 369 MAY pt. 2 — P

— *Mayflower families in progress: George SOULE, 1st ed., pt. 3 (family numbers 465-551)* — 2003 — REF LINEAGE ORG 369 MAY pt. 3 — P

— *Mayflower families in progress: George SOULE, 1st ed., pt. 4 (family numbers 552-636)* — 2005 — REF LINEAGE ORG 369 MAY pt. 4 — P

— *Mayflower families in progress: George SOULE, 1st ed., pt. 5 (family numbers 637-763)* — 2008 — REF LINEAGE ORG 369 MAY pt. 5 — P

— *Mayflower families in progress: George SOULE, 7th ed.* — 2015 — REF LINEAGE ORG 369 MAY — P

CUSHING, Muriel Curtis, comp. — *Philip DELANO of 'The Fortune,' 1621, and his descendants for four generations* — 2002 — REF LINEAGE ORG 369 MAY — P

— *Philip DELANO of 'The Fortune,' 1621, and his descendants in the fifth and sixth generations, pt. 1 (family numbers 198-367)* — 2004 — REF LINEAGE ORG 369 MAY pt. 1 — P

— *Philip DELANO of 'The Fortune,' 1621, and his descendants in the sixth and seventh generations, pt. 2 (family numbers 368-499)* — 2011 — REF LINEAGE ORG 369 MAY pt. 2 — P

— *Philip DELANO of 'The Fortune,' 1621, and his descendants in the fifth, sixth and seventh generations, pt. 3 (family numbers 500-561)* — 2012 — REF LINEAGE ORG 369 MAY pt. 3 — P

— *Philip DELANO of 'The Fortune,'*

1621, and his descendants in the fifth, sixth and seventh generations, pt. 4 (family numbers 562-636) — 2012 — REF LINEAGE ORG 369 MAY pt. 4 — P

— *Philip DELANO of 'The Fortune,' 1621, and his descendants in the fifth, sixth and seventh generations, pt. 5 (family numbers 637-706)* — 2014 — REF LINEAGE ORG 369 MAY pt. 5 — P

ROSER, Susan E. — Baltimore, MD: Genealogical Publishing — *Mayflower deeds & probates from the files of George Ernest Bowman at the Massachusetts Society of Mayflower Descendants* — 1994 — REF LINEAGE ORG 369 MAY LAND RECORDS, WILLS/PROBATE — P

MISCELLANEOUS

BETTINGER, Blaine T. — Cincinnati, OH: Family Tree Books — *Family Tree Guide to DNA testing and genetic genealogy* — 2016 — RESOURCE 929.1 Bet GENETICS

LARSEN, Paul — St. George, UT: EasyFamilyHistory.com — *Crash course in family history, 4th ed.* — 2010 — RESOURCE 929.1 Lar RESEARCH METHOD

LEVENICK, Denise May — Cincinnati, OH: Family Tree Books — *How to archive family keepsakes: Learn how to preserve family photos, memorabilia & genealogy records* — 2012 — RESOURCE 929.1 Lev PRESERVATION

— Cincinnati, OH: Family Tree Books — *How to archive family photos: Step-by-step guide to organize and share your photos digitally* — 2015 — RESOURCE 929.1 Lev PHOTOGRAPHY — P

SACH, Jacky — Kennebunkport, ME: Cider Mill Press — *Old stone and brass rubbing kit: Preserving epitaphs and artwork from historical gravestones & monuments* — 2007 — RESOURCE 929.1 Sac CEMETERY

SCOTT, Kerry — Cincinnati, OH: Family Tree Books — *How to use Evernote for genealogy: step-by-step guide to organize your research and boost your genealogy productivity* — 2015 — RESOURCE 929.1 Sco ORGANIZATION

SMITH, Drew — Cincinnati, OH: Family Tree Books — *Organize your genealogy: Strategies and solutions for every researcher* — 2016 — RESOURCE 929.1 Smi ORGANIZATION — P

Topeka Genealogical Society — Topeka, KS: Topeka Genealogical Society — *Syllabus 44th Annual Topeka Genealogy Conference "New Techniques for the Family History Detective," Speaker: Lisa Louise Cooke* — 2016 — RESOURCE 929.1 TGS CONFERENCE

— Topeka, KS: Topeka Genealogical Society — *Syllabus 45th Annual Topeka Genealogy Conference "Beyond Belief: The Wealth of Genealogy," Speaker: D. Joshua Taylor* — 2017 — RESOURCE 929.1 TGS CONFERENCE

UNITED STATES:

ANOTHER EXCITING ADDITION! For a long time, the TGS Library has had available the 3-volume set *The Great Migration Begins* by Robert Charles Anderson. His 7-volume set *The Great Migration: Immigrants to New England, 1634-1635* has now been added to the Library's collection. In addition, all 25 volumes of Anderson's newsletters have been purchased as one volume. These newsletters expand on many of the topics, records and bibliographies contained in his 10 volumes of *The Great Migration*. Come and explore this exciting new material. Perhaps you can find or expand on your early New England roots.

ANDERSON, Robert Charles — Boston, MA: New England Historical & Genealogical Society — *Great Migration Newsletter*, v. 1-25 — 2017 — REF US 973 And EMIGRTN/IMMIGRTN — P

ANDERSON, Robert Charles, George F. SANBORN, Jr. & Melinde Lutz SANBORN — Boston, MA: New England Historical & Genealogical Society — *Great Migration: Immigrants to New England, 1634-1635*, v. 1, A-B — 1999 — REF US 973 And EMIGRTN/IMMIGRTN v. 1, A-B — P

— Boston, MA: New England Historical & Genealogical Society — *Great Migration: Immigrants to New England, 1634-1635*, v. 2, C-F — 2001 — REF US 973 And EMIGRTN/IMMIGRTN v. 2, C-F — P

ANDERSON, Robert Charles — Boston, MA: New England Historical & Genealogical Society — *Great Migration: Immigrants to New England, 1634-1635*, v. 3, G-H — 2003 — REF US 973 And EMIGRTN/IMMIGRTN v. 3, G-H — P

— Boston, MA: New England Historical & Genealogical Society — *Great Migration: Immigrants to New England, 1634-1635*, v. 4, I-L — 2005 — REF US 973 And EMIGRTN/IMMIGRTN v. 4, I-L — P

— Boston, MA: New England Historical & Genealogical Society — *Great Migration: Immigrants to New England, 1634-1635*, v. 5, M-P — 2007 — REF US 973 And EMIGRTN/IMMIGRTN v. 5, M-P — P

— Boston, MA: New England Historical & Genealogical Society — *Great Migration: Immigrants to New England, 1634-1635*, v. 6, R-S — 2009 — REF US 973 And EMIGRTN/IMMIGRTN v. 6, R-S — P

— Boston, MA: New England Historical & Genealogical Society — *Great Migration: Immigrants to New England, 1634-1635*, v. 7, T-Y — 2011 — REF US 973 And EMIGRTN/IMMIGRTN v. 7, T-Y — P

HOLMES, Frank R. — Baltimore, MD: Genealogical Publishing — *Directory of the ancestral heads of New England families, 1620-1700* (Orig. Pub. 1923) — 1964 — US/ New England 974 Hol FAM HIST

INDIANA

BOGARDUS, Carl R., Sr. & William R. GREEAR, comps. — n.p.: Muscatatuck Press — *Wills of Scott County, Indiana, 1821-1889* — 1968 — US/IN Scott 977.2183 Bog WILLS/PROBATE

MARTIN, Bernice S., comp. — Medora, IN: Author — *Crawford Cemetery records, Shawswick Township, Lawrence County, Indiana* — 1971 — US/IN Lawrence 977.226 Mar CEMETERY

Scott County [IN] Genealogical Society — Scottsburg, IN: Scott County Genealogical Society — *1820-1905 Marriage index for Scott County, Indiana* — 2000 — US/IN Scott 977.2183 Sco MARRIAGE

KANSAS

JACKSON, Ronald Vern, ed. — Salt Lake City, UT: AGES — *Kansas 1855 Territorial Census Index* — 1977 — US/ KS 978.1 Jac CENSUS 1855

— West Jordan, UT: Genealogical Services — *Federal Census Index: Kansas [Territory] 1856-1857-1858* (Orig. Pub. 1987) — 1996 — US/KS 978.1 Jac CENSUS 1856-1857-1858

— North Salt Lake, UT: AISI — *Kansas [Territorial] Census, 1859* — 1988 — US/KS 978.1 Jac CENSUS 1859

JACKSON, Ronald Vern & Gary Ronald TEEPLES, eds. — Bountiful, UT: AISI — *Kansas 1860 Territorial Census Index* — 1978 — US/KS 978.1 Jac CENSUS 1860

JACKSON, Ronald Vern, ed. — West Jordan, UT: Genealogical Services — *Federal Census Index: Kansas 1870* (Orig. Pub. 1987) — 1996 — US/KS 978.1 Jac CENSUS 1870

KANSAS – COFFEY

Waverly High School Alumni Association — n.i. — *Waverly [KS] High School Alumni Banquet, 1995* — 1995 — REF ALUMNI KS Coffey 978.1645 WHS DIR 1995

— n.i. — *Waverly [KS] High School Alumni Banquet, 1998* — 1998 — REF ALUMNI KS Coffey 978.1645 WHS DIR 1998

— n.i. — *Waverly [KS] High School Alumni Banquet, 2004* — 2004 — REF ALUMNI KS Coffey 978.1645 WHS DIR 2004

— n.i. — *Waverly [KS] High School Alumni Banquet, 2008* — 2008 — REF ALUMNI KS Coffey 978.1645 WHS DIR 2008

KANSAS – FRANKLIN

Annual Staff, Pomona [KS] High School — Kansas City, MO: Inter-Collegiate Press — *'Pirate' - Pomona [KS] High School Yearbook, 1958* — 1958 — REF YEARBOOK 978.166 PHS Franklin 1958

KANSAS – MARION

Peabody Centennial Committee — Peabody, KS: Centennial Committee — *Peabody [KS] Commemorative Centennial Program, 1871-1971* — 1971 — US/KS Marion 978.157 Pea HISTORY

BRUNER, Hazel C. — North Newton, KS: Mennonite Press — *Days to remember: Burns Community, 1864-1970* — 1970 — US/KS Marion 978.157 Bru HISTORY

KANSAS – NEMAHA

OSTERTAG, Enid & John Ostertag — Seneca, KS: Nemaha County Genealogical Society — *Corning Gazette of Nemaha County, Kansas, Sep 1898 to Nov 1902: Births, marriages, deaths, everyday events* — 1995 — US/KS Nemaha 978.1332 Ost NEWSPAPER

KANSAS – POTTAWATOMIE

FLOWERS, Loyd — n.i. — *My boyhood days: Havensville, Kansas, 1925-1943* — 2003 — US/KS Pottawatomie 978.132 Flo HISTORY

KANSAS – SHAWNEE

RAINEY, M. Elmo, comp. — Topeka, KS: Central Press — Berryton High School, 1914-1962 — c. 1970 — REF YEARBOOK 978.163 BHS Shawnee 1914-1962

MCQUISTON, Bob, ed. — Berryton, KS: Berryton High School Printing Class — 'Buffalo' - Berryton [KS] High School Yearbook, 1947 — 1947 — REF YEARBOOK 978.163 BHS Shawnee 1947

n.i. — n.i. — 'Buffalo' - Berryton [KS] High School Yearbook, 1948 — 1948 — REF YEARBOOK 978.163 BHS Shawnee 1948

ALLEN, Loretha, ed. — n.i. — 'Buffalo' - Berryton [KS] High School Yearbook, 1949 — 1949 — REF YEARBOOK 978.163 BHS Shawnee 1949

KENTUCKY

TLC Genealogy — Miami Beach, FL: Author — *Green County, Kentucky taxpayers, 1795-1799* — 1993 — US/KY Green 976.9695 TLC TAX RECORDS

MISSOURI

SWERINGIN, Joyce Anderson — Lawson, MO: Author — *Ray County, Missouri marriages, Book 3, 1850-1868* — n.d. — US/MO Ray 977.819 Swe MARRIAGE

NEBRASKA

CLINE, Rosella and Gary Mitchel ZABOKRTSKY, comps. — Fairbury, NE: Gary Mitchel ZABOKRTSKY — *History of Steele City School District No. 1* — 1998 — US/NE Jefferson 978.2332 Cli SCHOOL

Jefferson County [NE] Historical Society — Fairbury, NE: Gary Mitchel ZABOKRTSKY — *Steele City, Nebraska: Its history and people in photos (Pub. 1970s), with addi-*

tional information by Gary Mitchel ZABOKRTSKY — 2016

— US/NE Jefferson 978.2332 Jef HISTORY

Historical Committee of the Steele City [NE] Centennial Association — Fairbury, NE: Gary Mitchel Zabokrtsky — *Early life in old Steele City, Nebraska, 1873-1973 (Pub. 1973), with additional information by Gary Mitchel ZABOKRTSKY* — 2016 — US/NE Jefferson 978.2332 His HISTORY

Steele City High School, Steele City, Nebraska Students and Staff — Fairbury, NE: Gary Mitchel Zabokrtsky — *Steele City, Nebraska story (Pub. 1950), with additional information by Gary Mitchel ZABOKRTSKY* — 2016 — US/NE Jefferson 978.2332 Ste HISTORY

ZABOKRTSKY, Gary Mitchel — Fairbury, NE: Author — *Steele City, Nebraska area military veterans, 1861-1976* — 2016 — US/NE Jefferson 978.2332 Zab MILITARY

— Fairbury, NE: Author — *Steele City, Nebraska American Legion & Auxiliary Post #349 Campbell-Klein, 1927-1977, and Memorial Day Services, 1999-2016* — 2017 — US/NE Jefferson 978.2332 Zab HISTORY

NORTH CAROLINA

RAYMOND, Charles E., comp. — Temecula, CA: Privately Published — *Scattered records relating to early Orange County, North Carolina residents from 1752-1852* — 2012 — US/NC Orange 975.6565 Ray HISTORY

VIRGINIA

Alleghany Highlands Genealogical Society — Athens, GA: Iberian Publishing — *Alleghany County, Virginia marriages, 1822-1854* — 1994 — US/VA Alleghany 975.5816 All MARRIAGE

<u>DONORS TO THE TGS LIBRARY FOR ITEMS RECEIVED AND PROCESSED APRIL THROUGH JUNE 2017</u>
--

BROCK, Nancy FLANAGAN, Marty HARRELL, Leta Kansas State Historical Society Library LaCLAIR, Barb Purchase: New England Historical Genealogical Society Purchase: Twigs 'n Trees RAYMOND, Charles E. STAHL, Terry TGS Conference Committee THOMAS, Vern WHISTLER, Judy ZABOKRTSKY, Gary Mitchel
--

TRACES THAT REMAIN

A trace on a stone
 is all that remains
 of a life,
 of hopes and joys,
 dreams and defeats;
 maybe dates:
 years, maybe more,
 and sometimes
 an inscription
 or words.
 Men, women,
 children of all ages,
 died
 of unknown causes.
 Families move,
 leave the land
 and behind,
 leave graves.
 - Duane L. HERRMANN

TGS Annual Picnic August 5, 2017

Brookwood Covenant Church

3601 SW 33rd Street

12:00 (noon)

Barbequed meatballs, drink and table service will be furnished.

Bring your favorite vegetable, salad or desert to share.

****ENTERTAINMENT****

Homefront in World War II

Duane and Joan SHUFELBERGER

Come learn what life was like on the homefront while the soldiers went off to war. You may OR may not remember what took place during this period of time. Duane and Joan were both educators in USD #501.

RSVP: *appreciated but not mandatory*

Alma BAKER [785-273-7921](tel:785-273-7921)

baker4211@sbcglobal.net

The TGS Library will be closed August 5, 2017.

QUERIES

(1)

Searching for John R. ELLIS and his parents/ancestors. Need John R. ELLIS's birth records, death records, & burial records (could be under - JR, John Riley, Riley, Railey). He was born about 1862-1865 in either KS, MO, KY, IL, or MI. He married: (1) Eliza E. SUTTON abt. 1880; (2) Rosa M. BURT 1890; & (3) Ella Lee RICKER 1895 (my direct line). He left Ella or died about 1910-1913 in either KS or MO. Want to verify John R. ELLIS & his parents/ancestors. Contact - khvc.genealogy@hotmail.com.

(2)

Searching for records to prove "family connection" (parent/child relationship) between Frederick KEISER/KYSER/KYSAR (b. 1761, Berks, PA; d. aft. Jan. 20, 1841, Jennings, IN) & wife, Mary Ann/Meriba/Mariba (CORNWALL/CORNELL; b. abt. 1766, KY?; d. May, 1841, Jennings, IN) and their 10 children: Solomon, William, John, Thomas Russell, Elizabeth, Phoebe, Samuel (my line), Jacob, Frederick Jr., & Sarah. (family lived in Nelson, Jefferson, Bullitt, Henry, Fayette - KY; & Jennings, Bartholomew - IN) Contact - khvc.genealogy@hotmail.com.

If you have Queries you would like printed, please mail to: Topeka Genealogical Society, Attn: Quarterly Editor, 2717 SE Indiana Ave, Topeka, KS 66604-0048 or email to the Editor at tgseditor@tgstopeka.org. Queries are free and are printed for members and non-members if space is available.

TOPEKA GIVES

TGS was one of 158 non-profit organizations who participated at Topeka Gives on June 6. This organization raises funds through donations and % matching to help fund non-profit organizations. This year TGS received \$2340.61. The money was designated for the purchase of an overhead scanner. A big thanks to all who made the effort to donate on this special day. We increased our donations from last year and with the % match of \$340.00 we were very pleased. Please thank Alma BAKER and Sandi KASSEBAUM, and TGS members who manned the booth on June 6.



Alma BAKER accepting check for TGS from Topeka Gives.



Alma BAKER, Marty FLANAGAN, Sandi KASSEBAUM holding check.

Bennie Lee GRAHAM Memorial Cemetery

Topeka, Shawnee County, KS

By Nancy APPELHANZ

Location: South side of the road at NW Alice Dr. & NW Menninger Rd.

GPS Coordinates: 39.10206 -95.68365

In 1879 this school was established and the facility opened in the summer of 1881 as State Reform School. In 1901-1907 it was called Boys' Industrial School at Topeka; 1907-1980 State Industrial School for Boys at Topeka; 1980-1997 Youth Center at Topeka; 1997-2008 Topeka Juvenile Correctional Complex; 2008-present Kansas Juvenile Correctional Complex. The cemetery was never given an official name since its establishment in 1884 until October 2011.

Breaking the law, broken homes, and truancy were just a few reasons why the boys were sent here.

According to school records just twelve boys are buried in this cemetery although thousands of boys have lived at this school through the years. Upon their death many were sent home to their families for burial. Those that were orphaned or school officials were unable to locate family, were buried in this cemetery.

In 1987 school students and staff had a rededication ceremony at the cemetery after completing a year-long research project called, "The Boys Time Forgot".

Through a request of Curtis L. WHITTEN, Juvenile Justice Authority Commissioner, the Governor of the State of Kansas, Honorable Sam D. BROWNBACK, signed an executive order naming the cemetery "The Bennie Lee GRAHAM Memorial Cemetery" on October 18, 2011 in memory of Bennie Lee, which enabled his name, memory and spirit to be with his peers.

Bennie Lee was born October 15, 1942 in Magnolia, Columbia County, Arkansas and later moved to Kansas City, KS. He died June 28, 1957 from internal injuries due to a carelessly performed appendectomy prior to his arrival at the school, of which he never recovered. When it became evident how ill he was he was taken to a local hospital where he died. Bennie Lee, the son of James Lee GRAHAM and Daisy LOCKHART GRAHAM was 14 years of age at the time of his death. Bennie Lee was a resident of the school from January 29, 1957 to June 27, 1957.

Bennie Lee GRAHAM is not buried in this cemetery although after years of searching records he is found to be buried at Mount Hope Cemetery, Topeka. At the time of Bennie's death the school's cemetery was overgrown and inaccessible so he was buried in Section East VI, Lot #101, Grave #6 on Monday, July 1, 1957.

Bennie Lee's grave was unmarked for 54 years until October 2011 when Father Joseph E. CHONTOS, Jr., Clinical Chaplain, Kansas Juvenile Correctional Complex,



View of Bennie Lee GRAHAM Memorial Cemetery

Topeka, worked tirelessly to have a headstone placed for Bennie Lee.

As of this date The Bennie Lee GRAHAM Memorial Cemetery is respectfully maintained.

Sources: "The Boys Time Forgot", Youth Center at Topeka, KS, 1987; Research information from Father Joseph E. CHONTOS, Jr., Clinical Chaplain at Kansas Juvenile Correctional Complex, Topeka, KS; The Topeka Capital- Journal, Friday, October 14, 2011 by Phil ANDERSON.



Bennie Lee GRAHAM tombstone at Mount Hope Cemetery



Memorial stone at The Bennie Lee GRAHAM Memorial Cemetery

BOYS BURIED AT THE BENNIE LEE GRAHAM MEMORIAL CEMETERY

SURNAME	GIVEN NAME	BIRTH	DEATH	NOTES
BUCHANAN	Clarence Elsworth	11-Mar-1868	4-Sep-1885	Died of malaria
CURTIS	James Henry	1873	17-Jun-1889	Died at 16 yrs
DES JARDEN	Edward Augustus Charles	23-Apr-1872	1-Nov-1888	Died of complications from the measles
DORCAS	Jefferson W.	3-Sep-1876	4-Apr-1892	No record of cause of death
EVERETT	Asa Adam	1870	15-Oct- 1884	Died of malaria
KITSMILLER	Karl	31-Jul-1876	10-Sep-1888	Died of complications from the measles
LANE	Edward V.	15-Oct-1872	25-May-1890	Also went by Henry Virgil LANE
POGUE	Orlan	3-Mar-1910	28-Aug-1927	Died of an epileptic seizure
RICHARDSON	Rollin	1870	28-Nov-1887	At school two years before dying
RUTLEDGE	Andrew North	1899	10-Nov-1917	Died in Union Pacific RR Yard in Junction City, KS
SMITH	Perry F. D.	1872	5-Sep-1885	Died of heart failure from malaria complications
THOMPSON	Donald Orville "Red"	30-Dec-1923	19-Sep-1938	Died from internal hemorrhaging from truck accident

MARINE LANCE CPL. KURTIS N CHAPMAN

BY Marty FLANAGAN

Memorial Day brings thoughts of loved ones we have lost, but what about those who do not have family to remember. I'm a member of the Topeka Chapter of National Society of the Daughters American Revolution. This organization honors men and women who have served our country in many ways. One project which called my name, was to find a picture of the twenty-one Kansas men who served in the Viet Nam War who were missing this basic recognition. A service member was assigned to me. My person was Marine Lance Cpl. Kurtis Nolan CHAPMAN.

LCpl. CHAPMAN, 20 years of age, died of gunshot wounds in a battle near Quang Tri on 9th of May 1968. He enlisted in January 1967 and was sent to Vietnam October 1967. He graduated from Gwinn Michigan High School and attended the University of Kansas for less than a year before he joined the Marines. He is buried at Fort Leavenworth, Leavenworth County Kansas, Plot: Section P, site 2207. So, this is the basic information on his death, but who was he? Who was LCpl Kurtis Nolan CHAPMAN? What is his story?

Kurt's father was Doyle Kenneth CHAPMAN who was born 31st of Jan 1923 in East Saline, Sheridan County, Kansas to Loren Clinton CHAPMAN and Edna Mary BORGER. Doyle CHAPMAN at 6 years of age lost his father, Loren. Doyle's mother and his siblings moved to Desoto, Johnson County, Kansas. Here Doyle's mother, Edna Mary BORGER CHAPMAN, remarries. Doyle grows up in Johnson County Kansas.

Doyle at age 24 marries JoAnn RENNER, Kurt's mother, on the 25th of April 1947, in Wichita, Kansas. JoAnn's parents live in Desoto, Kansas. They are Mr. and Mrs. Elmer RENNER. Doyle and JoAnn become proud parents of Kurtis Nolan who was born on 2nd of December 1947 in Denver, Colorado. Next, they add a sibling for Kurtis. A sister, Cheryle Deniese who was born on 13th of August 1949. Cheryle passed away on 9th of April 1962 in Waco Texas at the age of 12. Kurt, at the age of 16, loses his mother, JoAnn RENNER CHAPMAN, 30th of March 1964 in Sugar Land, Texas. This story still was unraveling as I still want to know how did this 20-year-old who had lost so much growing up and ultimately gave his life for our country and for us.

Let's take a look at who Kurt's father was. Doyle K CHAPMAN,

Aviation Cadet, completed his basic flight training at the AAF Pilot School, Gunter Field, Alabama. Doyle had completed his primary training at Lakeland, Florida. His advanced training was completed at another undetermined AAF Training Command facility. It is known that he was a pilot in the Korean War and he also served in Viet Nam. He had completed cross country navigation, night flights, formation flying, radio code, aircraft identification, meteorology instruments and parachute instruction. Using the federal census records and military records, I found the family location in Denver Colorado in 1948, in Hawaii in 1955 and in 1962 the family is in Waco Texas. And finally, Doyle and Kurt are living in Marquette, Michigan in 1966. The clue to the family dynamics is the father was a career military man. He served first in the Army Air Corp and the last documented information on Doyle was he was a Major in 1968 and was buried at Fort Leavenworth. So, Kurt grew up as "Air Force Brat". Doyle passed away 21st of June 2005 in Sugar Land, Fort Bend, Texas.

I could not find out information on his High School career except he did attend Gwinn High School on The Air Force Base and that he graduated from this school. The most important find was his Senior High School picture. I think he chose to attend Kansas University (KU) because of his grandparents living in Desoto, Kansas and KU had a scholarship for ROTC students. I learned that all Naval ROTC students are called Midshipmen. Each semester Midshipmen are required to take one naval science course and a drill period for 2 hours each week. As a regular Naval ROTC 75% of the students received all tuition, textbooks, lab fee, lab materials and a retainer fee of \$50 per month. The Battalion of Midshipmen also maintains a rifle and pistol team apart from the drill team. Kurt was on the rifle and pistol team.

Kurt joined the Marines. As we know, this is the toughest branch of service. He was listed as a rifleman and was Posthumous Promoted to Lance Cpl. LCpl Kurtis Nolan CHAPMAN fought and died 4 km NW of Dong Ha Quant Tri Providence, South Vietnam. He was assigned to Unit D company 1st Battalion 26th Marines 3rd Marine Division, Marine Amphibious Force. He was the toughest of the toughest and fought with the best.

"THE KU 59 was a project which re-examined this period of our cultural and political history by taking a look at 59 men who attend KU during a time of widespread uncertainty, they were shipped off to fight and perish in an unpopular war in an unfamiliar land". Kurt would have graduated with the class of 1969 with a degree in Liberal Arts and Science. The 59 students from KU who served 17 died within 3 months of arriving in Viet Nam, 14 suffered accidental deaths, bodies of eight were never recovered and many were award the highest medals our country allows for their service. Here is

the web page to check out THE KU 59 project. <http://www2.ljworld.com/KU59/> also <http://www.vvmf.org/>

Kurt's father never saw his children married or experienced grandchildren. This family gave so much for our country. Father and son served this country well. Thank you for your service. Here is the link to the web page that I was privileged to submit his picture. He is remembered.

<http://www.vvmf.org/Wall-of-Faces/8736/KURTIS-N-CHAPMAN>



Kurtis Nolan CHAPMAN's Senior High School picture.

LCpl Kurtis Nolan Chapman	
Memorial	Photos Flowers
Learn about sponsoring this memorial...	
Birth: Dec. 2, 1947 Denver Denver County Colorado, USA Death: May 9, 1968 Quang Tri, Vietnam	
Military Service: USMC (United States Marine Corps) Country of Casualty: Republic of Vietnam (South Vietnam) Type of Casualty: Hostile - Killed Name: CHAPMAN KURTIS NOLAN Date Record Processed: May 1968 Service Number: 2240413 Military Grade: LCPL (Lance Corporal) Date of Death: 09 May 1968 Home of Record: Overland Park, Kansas Service Occupation: Rifleman (USMC) Date of Birth: 02 Dec 1947 Reason: Gunshot or Small Arms Fire Aircraft or not Aircraft: Ground Casualty Race: Caucasian Religion: Protestant - no Denominational Preference Length of Service: 1 Marital Status: Single Sex: Male Citizen: US Posthumous Promotion: Not Posthumously Promoted Date Tour in Southeast Asia Began: 14 Oct 1967 Last Record: Final Record Body Recovered or Not: Body Recovered Age: 20 Component: Regular (USMC) Province: Military Region 1 - Quang Tri http://aad.archives.gov	
Inscription: KANSAS L CPL US MARINE CORPS VIETNAM BSM * PH	
Burial: Fort Leavenworth National Cemetery Fort Leavenworth Leavenworth County Kansas, USA Plot: Section P, site 2207	
Maintained by: SMG Originally Created by: US Veterans Affairs Offi... Record added: Mar 04, 2000 Find A Grave Memorial# 3652545	



Kurtis Nolan CHAPMAN's tombstone in the Fort Leavenworth National Cemetery.

Information from Find A Grave website. (findagrave.com)

Shawnee County Marriage License Applications

LEWIS - LYNCH

Application dates range from the mid 1880's to 1913

Copies of original marriage license applications are available from the Topeka Genealogical Society for \$5 each.

Certain restrictions were put on who could legally be married, including a prohibition of the granting of a marriage license to males under age 21 and females under age 18. Persons younger than that who wished to be married had to provide the Probate Judge written permission from their parent or guardian. For most applications where the applicant was under the age limit, TGS has the written permission along with the original marriage license.

This is not an all inclusive collection due to some applications being given away in prior years.

Continued from Vol. 47, No. 2

Groom Surname	Groom Given Name	Groom Age	Groom Residence	Bride Surname	Bride Given Name	Bride Age	Bride Residence	Application Date
LEWIS	Charles	23	Topeka, KS	MORGAN	Ettie	17	Topeka, KS	8-Oct-1898
LEWIS	George	62	Topeka, KS	HALL	Amanda	34	St. Joseph, MO	27-Aug-1902
LEWIS	George W.	22	Auburn, KS	RANDELL	Opal	21	Auburn, KS	18-Dec-1902
LEWIS	Grant G.	22	Topeka, KS	JACKSON	Louisa C.	26	Topeka, KS	13-Oct-1892
LEWIS	Haymaid	37		EDWARDS	Comelia	26		2-Aug-1887
LEWIS	Henry	24		TYLER	Minnie A.	18		18-Sep-1890
LEWIS	I.D.	26		KELLY	Maud	20		6-Nov-1889
LEWIS	Irvin E.	21	Topeka, KS	WHITCOMB	Gertrude May	17	Topeka, KS	15-Mar-1910
LEWIS	J.T.	52	Ayrshire, IA	JONES	Maggie V.	50	Topeka, KS	4-Jul-1898
LEWIS	Jacob	29	Topeka, KS	IVING	Stella J.	29	Topeka, KS	14-Aug-1907
LEWIS	James Leroy	22	Topeka, KS	SPENCER	Florence Louise	19	Topeka, KS	22-Oct-1910
LEWIS	Jesse D.	23	Topeka, KS	TOBIAS	Maud A.	21	Topeka, KS	26-Feb-1906
LEWIS	John W.	23	Topeka, KS	IRVING	Minnie F.	19	Burlingame, KS	27-Nov-1891
LEWIS	Joseph	21		HARBIN	Emma	18		6-Feb-1889
LEWIS	Joseph B.	38	San Francisco, CA	RITTENSBARBER	Freda	19	Salina, KS	9-Jul-1895
LEWIS	Lee	27	Topeka, KS	MOORE	Sallie	35	Topeka, KS	19-Jun-1907
LEWIS	Lee	22	Topeka, KS	MURDOCK	Alice	20	Topeka, KS	20-Jul-1899
LEWIS	Lowery L.	30	Stillwater, OK	HOLT	Georgina M.	30	Topeka, KS	26-Sep-1903
LEWIS	Nathan	47	Topeka, KS	LUHMAN	Rella A.	30		29-Dec-1892
LEWIS	Ray E.	25	Berryton, KS	LOGAN	Maggie P.	20	Berryton, KS	28-Jan-1908
LEWIS	S.R.	69	North Prairie, WI	DUNN	M.A.	67	Tecumseh, KS	31-Mar-1908
LEWIS	Shirl E.	22	North Topeka, KS	MARISON	Myrte M.	19	N. Topeka, KS	24-Dec-1895
LEWIS	Stephen S.	24	Topeka, KS	STUDER	Alma L.	23	Topeka, KS	3-Jan-1894
LEWIS	T.J.	35		SWITZAR	Florence	28		10-Jan-1889
LEWIS	Thaddeus	30	McKoy, KY	THOMAS	Lillie	42	Pittsburg, KS	11-Jan-1909
LEWIS	Thomas	30	Topeka, KS	WARMU	Mary	19		8-Aug-1900
LEWIS	Thomas S.	21		YOUNG	Mary Lee	18		14-May-1891
LEWIS	W.A.	34	Jasper City, MO	SONGER	Myita Ann	37	Howard, KS	4-May-1907
LEWIS	Walter E.	20	Topeka, KS	SPEED	Bernice	17	Topeka, KS	10-Oct-1911
LEWIS	Walter M.	26	Topeka, KS	BROWN	Mable F.	20	Topeka, KS	21-Oct-1911
LEWIS	William	38	Topeka, KS	MCREYNOLDS	Hattie	26	Topeka, KS	14-Oct-1899

Groom Surname	Groom Given Name	Groom Age	Groom Residence	Bride Surname	Bride Given Name	Bride Age	Bride Residence	Application Date
LEWIS	William	22	Topeka, KS	ADDIS	Mary F.	17	Topeka, KS	16-May-1894
LEWIS	William	27		FULTON	Martha	18		17-Feb-1890
LEWIS	William D.	23	Topeka, KS	FOY	Margretta	22	Topeka, KS	29-Mar-1910
LEWIS	William Henry	25	Topeka, KS	MCGRIGER	Mattie	28	Topeka, KS	1-Mar-1901
LEXOW	Wm F.	23	Dixon County, KS	SHEETS	Agnes K.	18	Dixon County, KS	12-Apr-1898
LIBBEY	Thomas	22	Topeka, KS	SYMMIS	Leota	22		26-Dec-1893
LIBBY	Charles S.	33		SINELL	Marie F.	29		3-Sep-1887
LIBBY	James	29		HOWELL	Elinor J.	26		15-Jun-2015
LIBBY	John	30		YOUNT	Fannie	31		16-Sep-1890
LICHTY	J. Elias	36	Ellsworth Co., KS	HEWE	Emma	36	Great Bend, KS	10-Nov-1887
LICHTY	John J.	29	Morrill, KS	GARRETT	Sadie	28	Topeka, KS	6-Feb-1906
LICKLYTER	Clark	21	Topeka, KS	LAWRENCE	Anna	21	Topeka, KS	2-Nov-1901
LICKLYTER	Cleveland	20	Topeka, KS	MIZE	Mable	18	Topeka, KS	11-May-1905
LIGGETT	John	21	Baldwin, KS	HASTINGS	Edith	17	Topeka, KS	3-Nov-1910
LILBURN	Charles	24	Hamburg, IA	FOSDICK	Eva	23	Hamburg, IA	7-Sep-1905
LILES	Charles Edward	28	Topeka, KS	LILES	Sarah E.	30	Topeka, KS	16-Nov-1897
LILES	William R.	21	Topeka, KS	STEWART	Odessa May	16	Topeka, KS	8-Jun-1910
LILLARD	Chris	21	Rossville, KS	MARNEY	Jennie	16	Rossville, KS	3-Apr-1907
LILLARD	James M.	28	Rossville, KS	MARNEY	Myrtle May	20	Rossville, KS	18-Apr-1906
LIMBOCKER	Lester	40	Topeka, KS	PORTER	Susie	22	Topeka, KS	13-Nov-1909
LINAM	Calvin	28	Topeka, KS	CORNISH	Eliza	19	Topeka, KS	22-Jun-1892
LINDAMOOD	E.J.	29	Topeka, KS	SCOTT	Frances A.	25	Topeka, KS	7-Jan-1902
LINDAMOOD	Erie J.	26	Topeka, KS	DWELLY	Maud E.	26	Topeka, KS	2-Nov-1898
LINDAMOOD	Wade A.	22	Abilene, KS	ALLISON	Eva M.	19	Abilene, KS	17-Aug-1905
LINDAS	Henry E.	25	St Joseph, MO	LEWIS	Jessie	22		26-Apr-1893
LINDBLED	John	28	Topeka, KS	GUSTAFSON	Emma L.	20	Topeka, KS	17-Sep-1886
LINDERMAN	Ferdinand	22	Alta Vista, KS	MERSHAM	Rosa	18	Volland, KS	27-Sep-1898
LINDGREN	August	29	Topeka, KS	DANIELSON	Clara Gunhild	20	Topeka, KS	12-Jul-1899
LINDGREN	Axel	37	Topeka, KS	JOHNSON	Mary	30	Topeka, KS	27-Dec-1909
LINDGREN	Gustaf	50	Lindsborg, KS	OLSON	Louise W.	45	Lindsborg, KS	6-Dec-1912
LINDHOLM	John	31	Topeka, KS	SETTERLUD	Annie Matilda	34	Topeka, KS	18-Apr-1905
LINDLEY	Albert Everett	24	Willow Springs, MO	DEBOLT	Alta May	18	Topeka, KS	20-Mar-1913
LINDNER	Andrew	31		ISBERG	Hilda	25		5-Oct-1887
LINDQUIST	Axel M.	26	Topeka, KS	ZACKRISON	Livan A.	25	Topeka, KS	4-Feb-1904
LINDSEY	Charles A.	25	Topeka, KS	WALKER	Laura V.	22	Topeka, KS	4-Feb-1902
LINDSEY	Charles A., Jr	22	Topeka, KS	WALKER	Laura V.	18	Topeka, KS	15-Feb-1898
LINDSLY	Matthew	22		HEIGAL	Mary J.	19		11-Aug-1891
LINDSOY	Merrill Kirk	21	Topeka, KS	ROBINSON	Metta B.	21	Topeka, KS	29-Jun-1909
LINEAR	William	23	Topeka, KS	STARNES	Sally	44	Topeka, KS	12-Jun-1907
LINK	Eldridge G.	24	Topeka, KS	CHILES	Julia	20	Topeka, KS	15-Apr-1913
LINK	Oliver	24	Topeka, KS	BIGHAM	Edith May	17	Topeka, KS	18-Oct-1912
LINK	Wilbert A.	21	Topeka, KS	PAYNE	Minnie	19	Topeka, KS	18-Sep-1907
LINK	William	54	Topeka, KS	BELL	Elizabeth	53	Topeka, KS	13-Jan-1913

Groom Surname	Groom Given Name	Groom Age	Groom Residence	Bride Surname	Bride Given Name	Bride Age	Bride Residence	Application Date
LINK	William	37	Shawnee Co, KS	BELL	Eliza	39	Topeka, KS	22-Dec-1894
LINK	William D.	23	Shawnee Co, KS	BOWMAN	Fannie	26		20-Nov-1893
LINSDAY	M. Fred	44	LaJunta, CO	LARSON	Matilda	42	Wamego, KS	12-Nov-1902
LINTON	Evert	27	Topeka, KS	STONE	Mary	26	Ottawa, KS	28-Apr-1906
LIPPERT	Edward C.	26	Topeka, KS	ERICKSON	Jennie V.	29	Topeka, KS	21-Feb-1900
LIPPINCOTT	L.C.	25	Topeka, KS	SCHUTT	Beatrice	17	Topeka, KS	22-Aug-1906
LISENBY	Charles	21		ARTERBRIDGE	Minnie	23		13-Sep-1897
LISHEAR	Tilden H.	21	Topeka, KS	MATLOCK	Martha Suella	17		5-Dec-1894
LISTER	Hugh M.	26	Wamego, KS	VALENTINE	Marie A.	17	Wamego, KS	21-Nov-1912
LISTON	Roy J.	31	Cleveland, OH	SPROAT	Mary Myrtle	28	Topeka, KS	31-Mar-1913
LITCH	George W.	22	Topeka, KS	STEWART	Sarah M.	22	Topeka, KS	17-Jul-1907
LITTLE	Edward C.	40	Abilene, KS	STEELE	Edna M.	24	Parsons, KS	29-Nov-1889
LITTLE	George	24		JACKSON	May	19		7-Mar-1881
LITTLE	Harry	24	Oberlin, KS	SHOLES	Emma Frances	20	Topeka, KS	16-Mar-1907
LITTLE	Herbert P.	23	Topeka, KS	ALLEN	Mary G.	18	Topeka, KS	14-Dec-1910
LITTLE	J.F.	21	Topeka, KS	SWANK	Grace	19	Topeka, KS	12-Apr-1902
LITTLE	W.C.	27	N. Topeka, KS	GORK	Nellie E.	19	N.Topeka, KS	6-Mar-1900
LIVEL	Isaac	38		MINNUS	Sarah	24		21-Nov-1888
LIVINGSTON	Clair Luther	21	Kanopolis, KS	CARPENTER	Grace Lovena	20	Salt Lake City, UT	4-Sep-1911
LLOYD	Charles G.	22	Topeka, KS	JONES	Flora Edna	24	Topeka, KS	17-Mar-1906
LLOYD	Frank	34	McFarland, KS	COREY	Clara	21	Topeka, KS	18-Nov-1909
LLOYD	Frank Q.	22	Willard, KS	DOUGLASS	Fannie V.	16	Willard, KS	14-Dec-1904
LLOYD	George	21	Valencia, KS	MCKITNIT	Vina	19	Willard, KS	2-Apr-1897
LLOYD	Hubert L.	20	Topeka, KS	ROOK	Della	18	Topeka, KS	30-Dec-1904
LLOYD	Jacob	21	Shawnee Co, KS	SHERRETS	Carrie V.	17		7-Apr-1890
LLOYD	John F.	21	Shawnee Co, KS	READY	Hattie N.	21	Shawnee Co, KS	27-May-1899
LLOYD	T.G.	56	Topeka, KS	STEWART	Matilda	48	Topeka, KS	6-Apr-1901
LOADUE	Franz H.	26	Okanche, Oten	GRUNN	Laura E.	21	Topeka, KS	2-Jun-1896
LOBACH	Martain E.	21	Topeka, KS	WYATT	Bessie M.	20	Topeka, KS	26-Dec-1908
LOCKE	Elbridge G.	32	Tonganoxie, KS	BENSON	Lucy S.	18	Tecumseh, KS	7-Nov-1900
LOCKE	George G.	33	Lincoln, NE	SMART	Maud	27	Stuartville, MN	14-May-1902
LOCKE	Lewis	20	Topeka, KS	SHAFFER	Stelah	18	Topeka, KS	15-Jan-1908
LOCKE	Roy	25	Topeka, KS	BOUTWELL	Hazel	19	Topeka, KS	15-Nov-1910
LOCKHART	George A.	24	Tecumseh, Ks	STEPHENSON	Laura M.	27		24-De-1892
LOCKHART	Oliver	26		REED	Ella	25		25-Apr-1887
LODGE	Clarence H.	34	Topeka, KS	WARD	Frances Myrtle	27	Oakland, KS	17-Jun-1908
LODGE	Joseph Barrington	27	Topeka, KS	MARTIN	Lily May	27	Topeka, KS	27-May-1912
LOE	Charles J.	24	Boerne, TX	MCGOFF	Ellen M.	22	Topeka, KS	12-Dec-1910
LOFGREN	John	46	Riley Co, KS	SALLBERY	Anna	34		2-Jun-1894
LOFGREN	John Emil	25	Topeka, KS	JOHNSON	Johanna E.	20	Topeka, KS	4-Sep-1911
LOGAN	Grover C.	19	Topeka, KS	ARMSTRONG	Francis I.	19	Toep	18-Mar-1911
LOGAN	Grover D.	24	Topeka, KS	LARSEN	Liona	19	Topeka, KS	17-Aug-1910
LOGAN	James	23	Topeka, KS	BRYANT	Sadie	18	Topeka, KS	20-Nov-1907

Groom Surname	Groom Given Name	Groom Age	Groom Residence	Bride Surname	Bride Given Name	Bride Age	Bride Residence	Application Date
LOGAN	Samuel	21	Topeka, KS	LARKINS	Hattie	18	Topeka, KS	1-May-1909
LOGSDON	James Wm.	21	Osawkie, KS	COOK	Daisy G.	16	Osawkie, KS	18-Dec-1895
LOHRMAN	Harry W.	28	Omaha, NE	BOUTWELL	Effie	19	Topeka, KS	3-Dec-1896
LOMMASSON	Charles C.	26	Chama, NM	DARBY	Mary E.	31	Topeka, KS	7-Jun-1909
LOMMASSON	Lawrence W.	26	Topeka, KS	OSBORNE	Bertha Leonora	25	Topeka, KS	25-Jun-1904
LONERGAN	Vinnie L.	24	Topeka, KS	TAMBLYN	Iola B.	18	Topeka, KS	15-Aug-1892
LONG	Abram D.	40	Englewood, CA	MERRILUS	Bessie	26	Topeka, KS	22-Dec-1891
LONG	Byron	29	Topeka, KS	MITCHELL	Myrtle	21	Topeka, KS	18-Jul-1903
LONG	Byron W.	22	Topeka, KS	SCOTT	Annie E.	18	Topeka, KS	11-Jan-1896
LONG	Claude H.	24	Topeka, KS	GONSOLLY	Pearl R.	21	Topeka, KS	3-Jun-1911
LONG	D.J.	21	Elmont, KS	WARNER	Della M.	16	Elmont, KS	21-Mar-1900
LONG	Homer G.	20	Topeka, KS	ANSEL	Mabel A.	23	Topeka, KS	19-Sep-1900
LONG	James	58		GIFFORD	S.H.	57		18-Nov-1887
LONG	John	22	North Topeka, KS	BELLE	Mesha	20	Topeka, KS	11-Oct-1909
LONG	John	33	Topeka, KS	EBERLING	Mary	29	Driftwood, OK	16-Dec-1899
LONG	Robert Arthur	26	Topeka, KS	PORTER	Ellen Selena	19	Topeka, KS	27-Nov-1901
LONG	Robert S.	22	Topeka, KS	HARRIS	Tillie Preston	21	Topeka, KS	18-Jul-1906
LONG	Samuel	22	Topeka, KS	STITE	Effie	20	Topeka, KS	6-May-1899
LONG	Victor C.	25	Topeka, KS	WATTS	Mary Hannah	22	Topeka, KS	19-Jun-1911
LONG	William H.	28	Topeka, KS	EBERTH	Barbara	37	Topeka, KS	15-Apr-1901
LONGAKER	Amos	24		GEORGE	Frank	24		11-Jul-1888
LONGAKER	Charles	24	Topeka, KS	HAUS	Eva V.	17	Topeka, KS	19-Jan-1906
LONGAKER	E.C.	29	Topeka, KS	KIMME	Rose Clemma	22	Valencia, KS	8-Feb-1907
LONGAKER	Irell	25	Topeka, KS	KERSEY	Florance	20	Topeka, KS	31-Dec-1908
LONGWORTH	Alonzo E.	28	Topeka, KS	BURT	Blanche E.	25	Leavenworth, KS	9-Dec-1907
LONSINGER	J.F.	23		MEHAFFEY	Flora	17		12-Oct-1888
LOOK	John	25		LOVELAND	Hattie	18		14-Nov-1890
LOOK	Willie H.	28	Kansas City, MO	THORNTON	Massie	27	Kansas City, MO	15-Dec-1908
LOOKER	William	28	North Topeka, KS	COTTON	Loretta	22	Topeka, KS	5-May-1894
LORD	George B.	29	Topeka, KS	WILLIAMS	Jessie	23	Topeka, KS	3-Mar-1892
LORD	Walter	24	Kansas City	MOORE	Hattie	23		20-Jan-1900
LORD	Walter A.	37	Topeka, KS	DAY	May	33	Topeka, KS	1-Aug-1907
LORTIE	Joseph A.	35	Topeka, KS	ALEXANDER	Louise	36		30-Aug-1898
LOTT	Robert L.	24	Topeka, KS	BICKNELL	Mabel E.	23	Topeka, KS	21-Dec-1901
LOUDEN	Arthur Clare	29	Fairfield, IA	TROBERT	Maud Mary	24	Topeka, KS	25-Apr-1911
LOUDERBACK	George	37	Wichita, KS	GODDEN	Lydia	38	Omaha, NE	9-Sep-1903
LOVELADY	Lewis	48	Winfield, KS	PHILLIPS	Lottie	46	Topeka, KS	30-Mar-1899
LOVELAND	Harvey A.	22	Topeka, KS	MCMAHAN	Zena	20		10-Apr-1893
LOVELAND	Stephen	21	Eskridge, KS	WRIGHT	Agnes	17	Maple Hill, KS	28-Sep-1904
LOVELESS	Edward C.	31	Topeka, KS	SMITH	Maggie	35	Topeka, KS	15-Jan-1900
LOVELL	Francis M.	28		COOK	Agnes	21		6-Dec-1886
LOWERY	George W.	21	Topeka, KS	BROWN	Susie	20	Topeka, KS	1-Jul-1891
LOWRY	Delbert D.	20	Topeka, KS	MONTGOMERY	Lula	19	Topeka, KS	15-Aug-1912

Groom Surname	Groom Given Name	Groom Age	Groom Residence	Bride Surname	Bride Given Name	Bride Age	Bride Residence	Application Date
LOWRY	John	24	Topeka, KS	BASKIN	Daisy	20	Topeka, KS	20-Oct-1903
LOWRY	John D.	22		TUTTLE	Addie	18		30-Dec-1890
LOY	Jesse D.	22	Topeka, KS	ADKINS	Jennie	16	Topeka, KS	4-Aug-1903
LUCAS	Charles E.	29	Manila, Philippines	GRUBS	Mabel E.	24	Topeka, KS	8-Oct-1906
LUCAS	Clarence	26	Silver Lake, KS	STOVER	Martha A.	25	New Jersey	16-Feb-1898
LUCAS	Henry H.	45		PERRIN	Amanda M.	28		18-May-1892
LUCAS	Thomas E.	23	Kansas City, MO	THOMPSON	Martha	20	Topeka, KS	22-Aug-1895
LUCAS	Wilson P.	46		WOODYARD	Elizabeth	29		20-Sep-1886
LUCE	Frank E.	28	Topeka, KS	SEATTON	Emma J.	25	Shawnee Co, KS	29-Oct-1891
LU DLUM	James Norman	27	Great Bend, KS	CAMPBELL	Anna Johnson	24	Topeka, KS	12-Feb-1908
LUE	Earl E.	22	Berryton, KS	BEARDEN	Georgia M.	22	Berryton, KS	1-Oct-1910
LUE	Henry B.	21	Shawnee Co, KS	NIECUM	Charlotte	22	Shawnee Co, KS	22-Mar-1892
LUHN	George J.	28		CORVIN	Debby D.	23		22-Dec-1888
LUKENBILL	Charles N.	39	Topeka, KS	DAKIN	Myrtle M.	27	Topeka, KS	4-Jun-1904
LUMPKINS	William	55		BURKE	Susan	41		13-Sep-1888
LUND	John A.	32	Topeka, KS	BLOOM	Ellen J.	24	Topeka, KS	24-Oct-1900
LUNDBERG	Albert Everett	22	Topeka, KS	THOMAS	Viola	20	Topeka, KS	17-Dec-1910
LUNDGREN	Frank	29	Topeka, KS	BJORKBACK	Anna E.	26	Topeka, KS	19-Jun-1899
LUNDGREN	J.A.	29		HANSON	Jennie	22		16-Sep-1897
LUNDIN	S.A.	42		HANSON	Mary	32		12-Sep-1887
LUNDMAN	Carl A.	35		LINSTROM	H.M.	26		13-Sep-1890
LUNDON	Jesse	65	Topeka, KS	YOUNG	Belle	42	Topeka, KS	26-Aug-1901
LUNDQUIST	Charles	24	Topeka, KS	HAGLAND	Beda	25	Topeka, KS	16-Apr-1898
LUNDQUIST	Fritz	23	Topeka, KS	FERNSTROM	Augusta	24	Topeka, KS	3-Jul-1891
LUNDSTEDT	John	28	Kansas City, MO	JOHNSON	Hannah	28	Topeka, KS	5-Jun-1897
LUNDY	Ayris Derby	27		THOMPSON	Mary	24		8-Aug-1888
LUNGSTRUM	John A.	26	Topeka, KS	FERDINAND	Sena	20	Topeka, KS	20-Nov-1906
LUSCO	Raymond	28		LARKINS	Mary	25		9-Jul-1889
LUSCO	William	36	Topeka, KS	BROWN	Maggie	23	Topeka, KS	25-Jun-1906
LUSE	Frank N.	26		GARRETT	Victoria	25		19-Dec-1887
LUTES	Albert Edgar	22	Topeka, KS	MILLER	Mable S.	19	Topeka, KS	31-Dec-1906
LUTES	Frank C.	27	Topeka, KS	DAUBER	Laura E.	23	Topeka, KS	29-May-1903
LUTHYE	Charles	26	Silver Lake, KS	QUINTOND	Mable G.	18		28-Dec-1893
LUTHYE	Edward C.	22	Topeka, KS	PRESGROVE	Nettie Mary	18	Silver Lake, KS	16-Sep-1891
LUTHYE	John W.	24	Silver Lake, KS	BOYLES	Daisy	19	Silver Lake, KS	31-Dec-1901
LUTHYE	W.A.	26		MEYER	Nora E.	18		16-Dec-1889
LYMAN	C.W.	20		DAVIGNON	Eugenia C.	21		6-Jul-1889
LYMAN	Fred R.	25	Ottumwa, IA	GAMON	Kate	24	Ottumwa, IA	19-Oct-1894
LYMAN	Fredric T.	24	Topeka, KS	DAVIES	Laura E.	24	Topeka, KS	15-Nov-1899
LYMAN	William H.	24	Topeka, KS	MARKLEY	Olive	22	Topeka, KS	15-Nov-1898
LYMAN	William H.	21	Topeka, KS	BRUSMAN	Myrtle T.	20	Topeka, KS	5-Jun-1895
LYNCH	Frank	33	N. Topeka, KS	AYRES	Hattie	20	N. Topeka, KS	19-Jun-1886

To Be Continued

**TOPEKA GENEALOGICAL SOCIETY**

PO Box 4048 Topeka, KS 66604-0048

785-233-5762

www.tgstopeka.org**MEMBERSHIP APPLICATION / RENEWAL FORM****FOR MEMBERSHIP YEAR: January 1 through December 31, 2018**

Date _____

MEMBER INFORMATION:

Single or Joint Member (1):	Member (2): (for Joint Memberships)
NAME: _____	NAME: _____
Email: _____	Email: _____
Cell phone (optional) : () _____	Cell phone (optional) : () _____
Share contact info with TGS members? <input type="checkbox"/> Yes <input type="checkbox"/> No	Share contact info with TGS members? <input type="checkbox"/> Yes <input type="checkbox"/> No
<input type="checkbox"/> New member <input type="checkbox"/> Renewing member	<input type="checkbox"/> New member <input type="checkbox"/> Renewing member

(Note: if you use email, please provide your current email address (print legibly), as we are relying increasingly upon electronic means of communication.

HOUSEHOLD CONTACT INFORMATION:

Address _____

Number Street City State Zip+4

Home Telephone () _____

New Member: How did you learn about TGS? _____

MEMBERSHIP RATES:

- [☐] INDIVIDUAL \$ 30.00
- [☐] JOINT \$ 40.00 (2 members living at same address)
- [☐] STUDENT \$ 10.00 (Student eligibility limit is 25 years of age)
- [☐] DONATION* \$ _____
- [☐] NARA GIFT FUND \$ _____ (\$1.00 or more)
- [☐] Printed/Mailed TGS *Quarterly* and *News & Views* add \$20.00

**Applications made on or after October 1
may defer membership to the next year.**

TOTAL ENCLOSED: _____ (Make checks payable to TGS)

*Donations in addition to membership dues are welcome and are tax deductible as provided by law.

All membership information is confidential and WILL NOT be sold or distributed by TGS

This section for office use only:

Accepting Librarian Signature

Payment:
Type: _____
Check# _____
Check Date: _____
Amt. Paid: _____

Notifications:
Treasurer: _____
Publications: _____
Member File: _____



TOPEKA GENEALOGICAL SOCIETY
 PO Box 4048 Topeka, KS 66604-0048
 785-233-5762
www.tgstopeka.org

MEMBERSHIP APPLICATION / RENEWAL FORM

FOR SOCIETIES - INSTITUTIONS - LIBRARIES

FOR MEMBERSHIP YEAR: January 1 through December 31, 2018

Date _____

ORGANIZATION:

Name: _____

Address: _____

City: _____ State: _____ Zip+4: _____

Phone: _____ Contact Person: _____

Email: _____

(Note: if you use email, please provide your current email address (print legibly), as we are relying increasingly upon electronic means of communication.)

Applications made on or after October 1 may defer membership to the next year.
 Organizations do not have voting rights nor access to "members only" website.

MEMBERSHIP PLAN:

- ☐ Organization - \$40.00 - Receives electronic publications only.
☐ Printed/Mailed TGS *Quarterly* and *News & Views* add \$20.00

EXCHANGE PARTNER:

- ☐ Electronic Exchange - No fee required. If you are a NEW exchange partner, please complete and return this form. If you are an EXISTING partner only changes or corrections need to be returned.

TOTAL ENCLOSED: _____ (Make checks payable to TGS)

All membership information is confidential and WILL NOT be sold or distributed by TGS

This section for office use only:

Accepting Librarian Signature _____

Payment: Type: _____ Check# _____ Check Date: _____ Amt. Paid: _____
--

Notifications: Treasurer: _____ Publications: _____ Member File: _____

TOPEKA GENEALOGICAL SOCIETY PUBLICATIONS FOR SALE

This is a partial listing of publications available for sale by the Topeka Genealogical Society. Listed prices include the price of the publication, plus shipping and handling. Tax-exempt libraries and out-of-state residents wishing to purchase publications should remit the amount shown under the PRICE heading. Kansas residents desiring shipment of items must remit the amount shown under PRICE, plus the Kansas and local sales tax in effect at the delivery location. Please contact your nearest County Tax Office if you need to determine your local tax rate. Sales tax is applicable to both the base price of the publication, and shipping and handling costs. For a complete listing of publications available for sale, check the TGS website at www.tgstopeka.org.

Stock

<u>No.</u>	<u>Subject</u>	<u>PRICE</u>
------------	----------------	--------------

Kansas Records Published by TGS

7706	Kansas Pioneers. ISBN 0-943259-12-6. 405 pages	\$39.05
8005	Clay Co., Marriage Licenses: 1866-1900. ISBN 0-943259-01-0. 59 pages	\$14.00
7806	Labette Co., Early Marriage Records: 1867-1878. ISBN 0-943259-18-5. 37 pages	\$11.50
7805	Lyon Co., Death Notices & Burials in Hartford Cemetery. ISBN 0-943259-02-9	\$17.35
9607	Osage Co., Cemeteries & Old Soldiers & Obits. ISBN 0-943259-15-0. 669 pages	\$85.95
0301	Republic Co., History: Surname Index: 1868-1964. ISBN 0-943259-19-3. 56 pages	\$19.35
7305	Shawnee Co., Cemeteries Vol I. ISBN 0-943259-08-8. 37 pages	\$11.50
7707	Shawnee Co., Cemeteries Vol II. ISBN 0-943259-07-X. 187 pages	\$25.05
8707	Shawnee Co., Cemeteries Vol III. ISBN 0-943259-06-1. 189 pages	\$25.05
9307	Shawnee Co., Cemeteries Vol IV. ISBN 0-943259-14-2. 78 pages	\$18.85
8206	Shawnee Co., Marriages Vol 1. ISBN 0-943259-11-8. 206 pages	\$25.05
8306	Shawnee Co., Marriages Vol 2. ISBN 0-943259-10-X. 234 pages	\$25.05
8405	Shawnee Co., Marriages Vol 3. ISBN 0-943259-09-6. 148 pages	\$22.55
9206	Shawnee Co., Naturalization Index – 1865-1930. ISBN 0-943259-13-4. 84 pages	\$17.35
7708	Shawnee Co., Probate Court Records. ISBN 0-943259-04-5. 42 pages	\$15.00
0006	Wabaunsee Co., Cemeteries Vol 1. ISBN 0-943259-16-9. 295 pages-sold as 2 vol. set together with:	
0007	Wabaunsee Co., Obits & Vital Records 1892-1911. ISBN 0-943259-17-7 178 pages	\$54.85
0302	Wabaunsee Co., Index to 1919 Atlas. ISBN 0-943259-20-7. 64 pages	\$19.35
7306	Mortality Schedule for Kansas Territory	\$13.50

TGS Quarterlies (Sold only by complete volumes)

8000-8300 Volumes 10-13, 1980-1983. 32 pages (pricing per each complete volume)	\$19.35
8400-9000 Volumes 14-20, 1984-1990. 32 pages (pricing per each complete volume)	\$21.35
9100-10700 Volumes 21-37, 1991-2007. 32 - 48 pages (pricing per each complete volume)	\$25.05
8006 Extracts of TGS Quarterlies Vols 1, 2 & 3. 84 pages	\$11.50
8105 Table of Contents of TGS Quarterlies Vols 1 – 39 (1971-2009)	\$ 8.50

Missouri Records compiled by Nanon L. CARR

7206 Clay Co., MO Marriage Records – 1822-1852, Publ. 1957 62 pages	\$14.00
7207 Clinton Co, MO Marriage Records – 1833-1870, Publ. 1955. 70 pages	\$14.00
7208 Clinton Co, MO Wills & Administrations – 1833-1870, Publ. 1954. 54 pages	\$14.00

Michigan, Missouri, Ohio & West Virginia Records compiled by Debra GRADEN

0210 Buchanan Co, MO Taxpayers except St Joseph 1887-1890 293 pages	\$47.55
0211 Buchanan Co, MO Taxpayers except St Joseph 1891-1895 195 pages	\$47.55
0212 Buchanan Co, MO Taxpayers except St Joseph 1896-1901 246 pages	\$53.35
0213 Buchanan Co, MO Taxpayers except St Joseph 1902-1906 187 pages	\$47.55
0214 MO National Guard on the Mexican Border – 1916 Index 68 pages	\$25.05
0247 1890 St Joseph & Buchanan Co. Taxpayers, ISBN 0-943259-44-4. 512 pages	\$47.55
0248 St Joseph, MO Taxpayers, 1902-1906, ISBN 0-943259-48-7. 512 pages	\$47.55
0249 Index of the Missouri National Guard, 1917-1921, ISBN 0-943259-47-9. 764 pages	\$64.35
0255 All Name Index, Cass County, Michigan 88 pages	\$19.35
0256 1892 Berrien County, Michigan Directory 197 pages	\$11.00
0257 1892 Berrien County, Michigan, Farmer's Directory. 122 pages	\$25.05
0261 All Name Index to Cleveland, OH & its Germans, 3 pages	\$ 7.00
0263 Index to 5th West VA Cavalry & Brty G, Artillery, Civil War 18 pages	\$ 7.50

TOPEKA GENEALOGICAL SOCIETY
P O BOX 4048
TOPEKA, KS 66604-0048

ADDRESS SERVICE REQUESTED

--Please notify us promptly if your address changes, including your 9-digit zip code--

Kansas Records – Compiled by Debra GRADEN

0241	Kansas Towns & Cities of 1912 <i>108 pages</i>	\$19.35
0245	1855 Kansas Pioneers - New England Emigrant Aid Co, ISBN 0-943259-43-6 <i>72 pages</i>	\$22.55
0259	1880 Kansas Post Offices <i>29 pages</i>	\$12.50
0260	All Name Index, Vols 1 & 2 Kansas Cyclopedia <i>181 pages</i>	\$31.45

Jefferson County

0250	McLouth, Jefferson Co, KS, Times Souvenir Edition, Nov 25, 1898 <i>83 pages</i>	\$22.55
------	---	---------

Johnson County

0222	Johnson County Farmers - 1921 ISBN 0-943259-33-9 <i>370 pages</i>	\$25.05
------	---	---------

Leavenworth County & City

0215	Senior Souvenir Leavenworth High School – 1904. <i>97 pages</i>	\$22.55
0238	“Moved & Died”, Leavenworth. 1913-1916. <i>33 pages</i>	\$12.50
0239	US Disciplinary Barracks Cemetery, Fort Leavenworth, KS. <i>9 pages</i>	\$11.50
0240	Who’s Who of Leavenworth. 1941-1943. <i>469 pages</i>	\$47.55
0242	Registration of Voters in Leavenworth Co. – 1859 ISBN 0-943259-41-X. <i>154 pages</i>	\$19.35
0243	1890 Leavenworth City Directory ISBN 0-943259-42-8. <i>577 pages</i>	\$64.35
0244	Leavenworth VA Center Death Register Book #2. <i>80 pages</i>	\$16.85
0246	All Name Index-Biographical for Leavenworth, Douglas & Franklin Co.s <i>106 pages</i>	\$37.55
0251	Marriage Index, Book E, Leavenworth. <i>77 pages</i>	\$19.35
0252	Groom’s Index, Books K-V 1900-1922, Leavenworth ISBN 0-943259-45-2. <i>458 pages</i>	\$63.35
0253	Bride’s Index, Books K-V 1900-1922, Leavenworth ISBN 0-943259-46-0. <i>465 pages</i>	\$63.35
0254	Leavenworth Advertiser Newspaper, May 1899-Jul 1900. <i>26 pages</i>	\$12.50
0258	Early Births – Leavenworth <i>16 pages</i>	\$ 7.50
0262	Personal Property Tax List, 1901, Leavenworth. <i>33 pages</i>	\$16.85
0264	“June Bug”, Index to Leavenworth High School Yearbook – 1905-1930 <i>370 pages</i>	\$37.55

Order from: **Topeka Genealogical Society**, PO Box 4048, Topeka KS 66604-0048