



THE BACKTRACKER



A Publication of Puget Sound Genealogical Society

www.pusogensoc.org

January thru March 2016

Who Would Have Thought . . .

by Larry Harden

In January 2000, then President Larry Harden reinstated a Ways and Means Committee consisting of Sandie Morrison (Chair), Bruce Ramsey and Sue Plummer. At the February PSGS General Meeting, Sandie Morrison suggested we might have our own version of the popular Antique Roadshow TV program.

The first Antique Appraisal Fair was originally to be held on October 7, 2000, but was cancelled.

On October 6, 2001, the first Antique Appraisal Fair was held in the Senior Center of the Givens Community Center. The event was co-hosted by PSGS and the Kitsap County Historical Society.

The event was so popular and drew such a large crowd it was decided to hold the event again, but in a larger room. So, on October 19, 2002, the 2nd annual Antique Appraisal Fair was held in the Kitsap room of the Givens Community Center.

We have held the event at several locations over the years in addition to the Givens Community Center, in-

cluding the Summit Avenue Presbyterian Church, the Silverdale Lutheran Church and the Silverdale Community Center.



Because of the success of the event to this point, it was decided to hold the 2009 event in the President's Hall at the Kitsap County Fairgrounds. The 2009 event was a one day event, the same as the previous events, and was held on April 25, 2009.

The years 2010 and 2011 went from a one day event to a three day event and, for the first time, vendors were added.

The 2012 event became a two day event (Sat & Sun), which is the present format. This has become our single fundraiser. We have

been able to purchase valuable equipment for our Genealogy Center and pay for well known genealogists from out of town for our Seminar, classes and meetings. Please join us for this year's wonderful event on February 27th & 28th and support our PSGS organization. Besides, you'll have a wonderful time.

Table of Contents

A Look Back.....	6	Education Report.....	6	News.....	1, 3, 4, 14, 15
Belfair Bulletin.....	14	Genealogy Center Report....	2	Presidential Ponderings	2
Classified Ads	16	Genealogy Gems	11, 12, 15	Putting Down Roots	8, 9
Dear Genie	3	Looking Forward.....	7	Schedules	7
Did You Know?	16	Milestones	2	Side by Side	13

Presidential Ponderings

by Fran Moyer



Happy New Year to you all! I hope this proves to be a bountiful one for your research and ability to catalog your family's histories. I especially want to thank Ann Northcutt for two fabulous years of leadership! Continuing what she started, PSGS is going to be on the forefront of helping you with your family history journey. We begin this month with Nicolette Bromberg's program on Archival Preservation. Be sure to join us; this will be time well spent. This year PSGS will have our bi-annual seminar and this is certainly going to be informative. Well known and respected genealogist Thomas MacEntee will lead us on a "Day of Discovery." See all the details in the Seminar article on page 14. Upcoming in February is the Annual Kitsap Antique Show we co-host with the Kitsap Historical Society. This is our only fundraiser and it is the reason we can have the wonderful, out of town speakers who enhance our programs, classes and seminar. Please volunteer, but certainly come and enjoy this wonderful event. You will love it!



Milestones by Judy Joaquin

It is hard to believe that we are now on the start of a new year, 2016!! Hopefully, it will be a year of good things and lots of genealogy! Time to start re-organizing!

It is with sadness that we have lost some from our PSGS family. Clarajane Goux, a past member, passed away on September 25. Frances Moore's husband passed away on January 6, 2016. Our sympathies are sent to those left behind. We also extend our sympathy to our new President, Fran Moyer, who recently lost her sister.

Several of us PSGS members are headed to Salt Lake City next month. If you are unable to go this year, please consider it for some time in the future. A great time is had by all.

Genealogy Center Report

by Mary Ann Wright



January 2016 marks 4 years since the Grand Opening of the Genealogy Center at Sylvan Way! Have you checked out the Genealogy Center yet? Do you know the story of our move to Sylvan Way?

A little background . . . In 2009, Library Director Jill Jean and members of the Puget Sound Genealogical Society began discussions on forming a partnership that reflected both organizations' vision of providing research, educational and genealogical information to the Kitsap community. The partnership became a reality in July 2011 and the Society's genealogical research collection relocated to Sylvan Way.

The Grand Opening of the Genealogy Center was held on January 25, 2012, and attended by many local dignitaries and community supporters. Since then, the center averages 1,000 visitors a year. Dedicated PSGS member volunteers keep the center open six days a week, during regular hours at Sylvan Way, for the convenience of library patrons and genealogists alike. The collection includes:

- more than 4,000 titles of books, periodicals, microfilm and microfiche
- Kitsap County cemetery information
- funeral home records from the Lewis and Pendleton-Gilchrist (now Rill Chapel's Life Tribute Center) Funeral Homes in Kitsap County dating from 1903-1939
- obituaries from local and regional newspapers dating from 1891-2012, and
- a few local historical plat maps

The books include both genealogy reference books and local history books from all states and many European countries as well as a collection of guides to general genealogy research. If you're a book lover, history buff, family historian, or just curious we invite you to drop by and take a tour!



Dear Genie

Q: I have a relationship question. I am Rudolph, my children Rudolph-1, grandchildren Rudolph-2. My 8X great grandparents, the Comets, had a daughter, Comet-1, who is a secondary relation to me. That daughter had a grandson, Prancer. What is the relationship of: Rudolph to Prancer? Rudolph-1 to Prancer? Rudolph-2 to Prancer? Thank you for clarifying this.

A: This is a good question that is hard to figure out on your own. The easy, fool-proof way, especially if your pedigree goes way back, is to use a cousin calculator, also known as a relationship chart. Here are three options:

- Online cousin calculator - www.searchforancestors.com. Pick Tools off the menu bar, then choose Cousin Calculator from the list.
- PSGS relationship chart: www.pusogensoc.org, find the Genealogy Center on the left, scroll down to Research Forms, then Miscellaneous and you will see the Relationship Chart.
- Consult the simple relationship chart we have provided here in ***The Backtracker on page 10***.

Now for your question: Using the online cousin calculator from Search for Ancestors by submitting yourself as 8th

gr-grandchild of Comet and Prancer as their gr-grandchild, you will see Prancer is your 2nd cousin 7 times removed. Rudolph-2 is the 10th gr-grandchild of Comet, making them 2nd cousins 9 times removed, and with Rudolph-1 as the 9th gr-grandchild of Comet, their relationship to Prancer is 2nd cousin 8 times removed.

Q: My German GGGgrandfather's first family listed a wife, three sons and two daughters. The wife and all sons all died in the same year, 1839, between January and September. The daughters survived. I've tried "Googling" the year but nothing comes up. How can I find out what caused the deaths?

A: Church records contain a wealth of information. That is where I would start. The next step I would take is to send off for death certificates. If they aren't accessible, try getting in touch with the genealogy society where the family was located. Someone there might be able to find newspaper stories, hospital records, or local civil records. Genealogists are usually glad to help one another. If you are concerned about writing to someone who does not speak English, try an online translation program.

How I Wrote My First Book...and You Can, Too! by Carol Caldwell



My plan since high school was to write the great American novel, as if that had not been done before. Fast forward for almost fifty years and I finally had enough experiences to put into a novel. Yet what really motivated

me was my grandchildren. The first story I wrote was for granddaughter Claire because I wanted to make her smile.

The process was one of writing, changing, writing, scrapping, and writing more. With the help of my critique group of writers I was able to complete Claire's story,

titled, *Princess to the Rescue*. One of my critique friends referred me to her publisher and they accepted the story. It was a small publisher and it took two years before I saw my book in print. This same friend was also the illustrator, creating wonderful watercolor vignettes.

The story is about Princess Claire who sees a boy waiting for an audience with her father the King. But before he gets to the castle, the guard closes the door. Claire decides to help the boy since boys usually came with fathers to see the King and this boy didn't. Claire finds out his problem and urges her father to help him. The King likes Claire's suggestions, but says the boy must do the work.

(cont'd on page 11)



Society Gems...Linnie Griffin & Consuelo Udave



As a lifelong member of the Belfair Chapter of PSGS, Linnie Griffin has supported the Society in countless ways. Serving as Treasurer, Chairperson, Program Director, Fundraiser, you name it, Linnie Griffin has done it!

In these capacities, she has spearheaded and hosted fundraising garage sales and organized a very successful combined genealogy conference with the Shelton Genealogical Society.

Linnie does all this while being very active in her local community of Belfair and making sure she finds time to travel to Salt Lake City's Family History Library on a regular basis.

In recent years, her most important role has been her success in providing speakers for the Belfair Chapter's monthly meetings, which has increased attendance and interest in genealogy in our local area of North Mason.

As spoken by several of the Belfair Chapter members, "Linnie's devotion has really kept our chapter alive and viable."



Linnie Griffin — Consuelo Udave

For the past couple of years, Consuelo has designed and filled the Kitsap Regional Library display window for the month of October, Family History Month.

Her window displays are always attractive, eye-catching, informative and, according to the KRL staff, they always look forward to our October display.

As well as the window display, Consuelo also designed and created the display table at the 2015 Antique Show.

It was decorated beautifully using Phyllis Wahlquist's

"Kitsap Quilt". Many of the attendees, dealers and appraisers from the event commented on our great display table.

In addition, Consuelo has used her artistic talent to create this year's Christmas luncheon invitation and helped with all the party decorations.

From all of us to Linnie Griffin and Consuelo Udave, we thank you for being our SOCIETY GEMS!

Officers of 2015

Our officers for 2015 were elected by PSGS membership in 2014 and took office in January of 2015. Introducing the 2015 officers is Jean Yager on the far left. Officers (l-r): Ann Northcutt-President; Karin Burke-1st VP; Terry Mettling-2nd VP; Jackie Horton-Secretary; Judy Joaquin-Member-at-Large. Missing: Larry Harden-Treasurer. We thank them for their service!



Officers for 2016

PSGS officers for 2016 were elected this past October and installed at our Christmas party in early December. They will assume their responsibilities in January 2016. Jean Yager (far left) presented the new officers. 2016 officers (l-r): Fran Moyer-President; Judy Rice-1stVP; Terry Mettling-2nd VP; Jackie Horton-Secretary; Judy Joaquin-Member-at-Large. Missing: Larry Harden-Treasurer.





A Look Back...

at the past three months of programs presented by PSGS



October 28

“Salem Witches”

presenter: Jerri McCoy

Jerri brought history to life in the rural Puritan community of Salem Village in 1692 as the residents struggled to find the truth behind the accusations of witchcraft leveled at their neighbors. She profiled those accused, and their accusers, and how the actions of the governor finally stopped the madness. For more information on this time in history, several books and movies are available. The latest is a novel by Stacy Schiff, called *The Witches: Salem, 1692*.

November 18

“Swedish Research”

presenter: Jim Johnson

Jim Johnson, Director of the Heritage Quest Research Library, provided numerous links to available on-line Swedish records. He reviewed emigration records, parish records, and clerical survey records, which are only 6% of Swedish records with genealogical content. Additional records include probate and tax records, military records, and city and district court records. Jim also touched on naming patterns, migration reasons, and other useful tips as you research your Swedish ancestors. Some of the on-line resources include Arkiv Digital, arkivdigital.net, which is a subscription site, and free research at familysearch.org and Ancestry.com Library Edition. In addition, the Swedish-American Historical Society has wonderful resources, <http://swedishamericanhist.org/about/web-links.html>



News From the Education Committee

by Jean Yager

The committee has decided to try something new this year—WEBINARS! On January 23rd, Mary Hill, MLS, AG[®] (Mid-Atlantic States), will present a webinar, entitled “Using Church Records to Identify Ancestors.” If this type of instruction is well-received, the committee plans to have a couple more throughout the year. For example, we’re looking at webinars for beginning genealogists, which could replace the Genealogy series (Gen 101: Beginning Genealogy; Gen 102: Census Records and Gen 103: Vital Records) we have offered the past three years.

We do plan to continue offering the State Research lectures, starting with Massachusetts on Saturday, March 1, and presented by our own Ann Northcutt. This is a popular state since so many of our ancestors spent time there. Be sure to pre-register by signing up in the Genealogy Center; remember, maximum seating is 24. Some of

our other favorite instructors are returning, such as Mary Kathryn Kozy (Exploring FamilySearch.org); Steven W. Morrison (Simply Amazing – U.S. Quaker Records on Ancestry.com); Jim Johnson (Mayflower and Other Early Ships) and Janet Camarata (Mapping an Ancestor). We’re excited to have Dee Haviland Fournier (Sprechen sie Deutsch? No!) and Jill Morelli (A Beginner’s Guide to Accessing Records Denmark & Norway) join us this year as instructors.

Look for more information on these classes in the Genealogy Center or on our website www.pusogensoc.org. If you have any class/instructor suggestions or comments, please contact Jean Yager at educ@pusogensoc.org. Everyone is welcome to join the Education committee; we meet on the first Monday of each month in the Genealogy Center at 10am.



Looking Forward...

at the next three months of programs presented by PSGS

Jan 27 "Archival Preservation"

presenter: Nicolette Bromberg

Nicolette Bromberg, the Visual Materials Curator for the University of Washington, will show us how to store and preserve our family artifacts, such as photos, letters, and old documents.

Feb 24 "Canadian Research Strategies"

presenter: Jim Johnson

Jim Johnson, director of the Heritage Quest Research Library in Sumner, will show us how to find and interpret the records of our ancestors that might be available in Canadian repositories and on the internet.

Mar 23 "Family Photo Editing"

presenter: Megan Doreen May

KRL's Adult Services Librarian Megan Doreen May will share tips and tricks for editing old family photos to make them cleaner and sharper using free software.

Schedule of Classes — January through March

Jan 23	Saturday	10AM-Noon	Webinar: Using Church Records Presenter: Mary Hill
Feb 2	Tuesday	10AM-Noon	Sprechen sie Deutsch? No! Presenter: Dee Haviland Fournier
Feb 27	Saturday	10AM-Noon	Exploring FamilySearch Presenter: Mary Kathryn Kozy
Mar 1	Tuesday	10AM-Noon	SIMPLY AMAZING - US Quaker Records on Ancestry.com Presenter: Steven W. Morrison
Mar 26	Saturday	10AM-2PM	Massachusetts State Research Presenter: Ann Northcutt

Unless noted, all classes are held in the Heninger Room at the Kitsap Regional Library,
1301 Sylvan Way, Bremerton

Contact: educ@pusogensoc.org

Putting Down Roots

From Kansas to Illinois and Back

By Terry Mettling



My great, great grandfather, Samuel K. Anderson, was born about 1807 in Warren County, Kentucky to Alexander and Rebecca Anderson. When Samuel was approximately ten years old, the family left Kentucky and moved to Illinois, some miles to the southeast of St. Louis, settling in several different area of Illinois.

The first mention of Samuel in Illinois was in 1830 in Washington County. From the *Washington County Histories*, it states: "In 1830, there was not a single house in the town of Nashville, IL. The men that owned the land offered a parcel to be deeded to the wife of the first man to build a house in the town of Nashville. The two main competitors were Rev. Orcenith Fisher and Sam K. Anderson. Sam bought an old log cabin from a man named Robert Burns and moved it into town and set it up. It was the first house but he technically didn't build it and the proprietors disallowed it so Rev. Fisher's house was officially the first house in Nashville." In addition, the Anderson family are listed as members of the first Methodist Church in Washington County in 1833. Samuel and other members

of his family are found on the rolls of those who fought under General Henry during the Blackhawk Wars in 1832.

Samuel married Nancy sometime in the mid 1830s and had two known children with her; Martha (b. 1838) and William E. (b. 1840). Shortly after the 1850 census was taken, Nancy died. On 18 July 1852, Samuel married Lucinda Blair Crain in Nashville, the county seat of Washington County. Lucinda was recently widowed herself when her husband, Isaac Crain died. To this couple, three children were born; Samuel K., Jr. on 1 November 1854, James F. in 1858 and Louise Alice on 6 September 1860 (my great grandmother). Since the area in central and southern Illinois seemed to be prone to outbreaks of vari-

ous epidemics, Samuel decided in 1857 to relocate his family to Coffey County, Kansas where they settled in Avon Township. This is where the two youngest children were born. At this point, the family included Samuel and Lucinda, her three girls from her first marriage, Martha from Samuel's first marriage (William remained in Illinois), and the three children that were theirs as a couple.

Not much later, eastern Kansas became known as "Bloody Kansas" during the fighting of various factions trying to influence whether the state was to become pro- or anti-slavery. For these reasons, Samuel felt it best if the family returned to Illinois where they had been.

Sometime between the birth of Louise on 6 September 1860 and the beginning of December, they had made the return trip to Illinois, resettling near other members of the Anderson family. This was a move made to protect the family but unfortunately, in January of 1861, Samuel and two of the children, James and Sarah Crain, became ill and succumbed during one of the epidemics that frequently occurred. They are believed to be buried in a country cemetery southeast of Nashville.

After marrying again, and being widowed for a third time, Lucinda returned to Coffey County, Kansas and settled on a portion of what had been Samuel's land. There she remarried for a fourth time and continued to oversee the many children. One of her daughters by her first husband married one of her stepsons, a son of her fourth husband. Louise, my great grandmother, grew to adulthood in Burlington, and eventually married William S. Walker. They migrated westward to Edwards County, Kansas in a covered wagon shortly after 1900 where they lived for the rest of their lives. Grandma Walker died in 1955, just shy of her 95th birthday.



Putting Down Roots

Settling Kitsap

By Donna Munro



Janet & Alexander Munro

My husband, James Munro, was the youngest of 10 children born to Alexander and Janet Munro. Alexander McKenzie Munro was born October 7, 1862 in Kiltarn, Ross

Shire, Scotland. Janet Montgomery was born on October 26, 1870 in Argyle Shire, Scotland. They were married on October 2, 1890 in Seattle, WA.

Alexander was a stone mason who helped build the state capitol in Olympia and the Princess Hotel and Parliament building in Canada, as well as other buildings in the United States. Janet was a school teacher. Their family home was in what is now up the hill from Crystal Springs Drive on Bainbridge Island. They had apple and cherry trees on their 7 1/2 acre property.

My focus will be on the second son, Duncan Sr. and his second son, Duncan Jr., both being early settlers in different parts of Kitsap County.

Duncan Sr. was born at home in 1892. He recalled how the Native Indians would camp on the beach gathering clams, etc., and would come to the school house nearby and ask for old clothing. If they got a sack full, they'd weave the donor a basket.

When Duncan Sr. was only 16 he opened his store near the beach at Crystal Springs. He scraped enough money to buy the lumber and his uncle, Lachlan Montgomery, built the store. He bought goods wholesale in Seattle. There was a dock just steps below their home and a boat would come with passengers wanting eggs, apples, potatoes, etc. His mother became tired of people coming to their home and insisted they have the sepa-

rate store. He kept the store until he joined the Navy during WWI when he was on a submarine chaser ship for 20 months.

At about 19 years old, he was the bus driver for the kids to the new school, Pleasant Beach Elementary School. He used his own horse and buggy to take them (8 to 10 children) to and from school. He received \$25 a month for this job.

After his military service, Duncan Sr. worked at the Bremerton Ship Yard for a few years and again during WWII. He married Isabel Holm on November 19, 1918 in Seattle. He used his service bonus to buy a 10 acre farm on Central Valley Road in 1919. He later added to that acreage over the years and it became a thriving dairy farm.

Duncan Jr. drove the family car to deliver the milk. He started at 4AM and delivered milk to homes around Manette, along the beach road. He would stop at a bakery and take baked goods in exchange for the milk.

Duncan Jr. did not have a telephone while growing up, but when he married in 1947 and moved to a house within walking distance of the family home on Bainbridge Island, they had 13 or 14 homes on their party line.

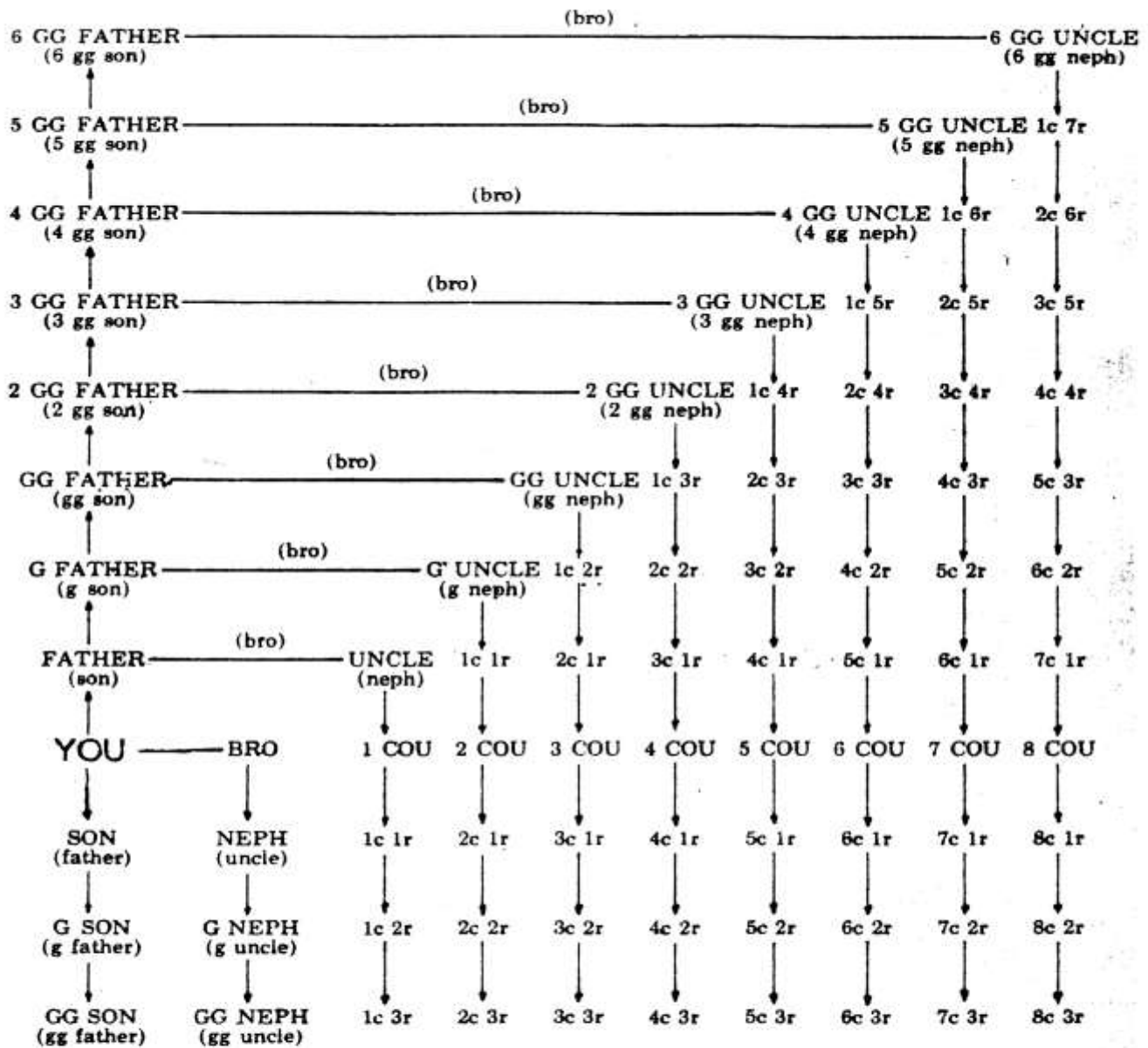
Duncan Sr. retired from the dairy business after WWII and sold this milk route to Kitsap Dairy. He began raising Hereford cattle on the farm until age and illness forced his second retirement in 1979.

Duncan Sr., a quiet man, worked hard and died in 1980 at Belmont Terrace Nursing Home in Bremerton. Isabel passed away in 1984 after a long illness. She worked hard all her life while maintaining a wide social circle. They both are truly missed.



Duncan Sr. purchasing his daily 3 gallons of gasoline at Grants Store in Tracyton

Cousin Chart



Abbreviations: g father - grandfather; gg father - great grandfather; bro - brother; c - cousin; cou - cousin; neph - nephew; r - generation removed.



Using Genealogy to Track Family Health

by Jeanie Schulze

Sometimes a genealogy journey isn't to discover ancestors, it's about tracking a life-threatening health issue in your family. When my sister discovered she had breast cancer this summer, she broke it to me by saying, "It skipped a generation." We knew my grandmother had a single mastectomy and that one of her sisters had a double mastectomy. My mother was an only child and while she battled other health issues, breast cancer wasn't one of them. Nor was it an issue for her only female cousin.

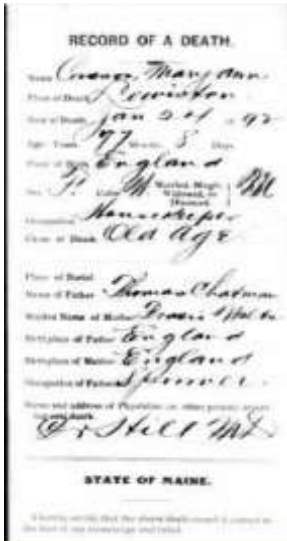
So the next question was—is this a genetic issue or is it random? Did it skip a generation? My Grandmother Florence had three sisters and my Great-grandmother had two sisters. We knew my Grandmother survived her breast cancer and died in her mid-sixties from pancreatitis. We didn't know what caused her sister Grace's death in her early twenties. Her sister Fanny had a double mastectomy in her late sixties but died from heart disease at 103. Ethel died in her eighties from Alzheimer's and heart disease. But what caused my great aunt Grace's death and my great, great Aunts' deaths?

I started with Grace. Before my Mom passed away she remembered Grace's married name—Choate. She also speculated that Grace died from tuberculosis since the family said she gradually grew weaker before dying in her mid-twenties. Lucky me. Maine, New Hampshire, and Massachusetts have lots of death records on the internet.

It took a while, but Grace's death certificate confirmed she passed away from tuberculosis.

Going back another generation, I tracked down the death certificates for my great-grandmother and her two sisters. Cause of death for sisters Frances and Elizabeth was the same—they were in their late sixties when they battled kidney disease. Given that they worked in textile mills in England and Maine, exposure to lint, dust, chemicals, and lead could have triggered their disease. My grandmother's death certificate made me smile. Mary Ann's cause of death was "old age." Since she was 94 when she passed away, I'll take it.

So my journey shows no smoking gun. While it's possible there may have been more incidents of breast cancer, no one died from it and most lived to old age. Good news for myself, my four sisters, and the next generations. My sister is now cancer free and completing her follow-up chemotherapy and radiation. However, her experience underscores the importance of vigilant mammograms in each generation. For my family and yours—that's a journey worth taking.



My First Book, (cont'd from page 3)

In the end, Claire makes a new friend. I have not stopped writing, continuing with two more finished Princess Claire stories, a finished one for her older brother, and ideas for three more in my head for my other grandchildren. At first I wondered what I could possibly write, but the floodgates were opened and ideas came too fast to get them on paper.

After all of that, then I will start on my family history.

Carol reading from her book to a class of second graders in Tacoma.



We have 19 intrepid PSGS members and friends traveling to the Family History Library in Salt Lake City in February!

We wish them great discoveries and a fabulous time.

Survival after the Civil War

by William Price

Dudley Price was born on December 2, 1842 to Lewis and Mariah Griffith Price. He was one of seven children born to Lewis and Mariah and he had two half sisters from Lewis’s first marriage. Sadly, Dudley never knew his father nor did his younger sister as Lewis died six months after he was born. His mother Mariah was pregnant with their seventh child when Lewis died. This was a great hardship on Mariah but fortunately Lewis’s brothers lived in the area and helped Lewis’s family.

Mariah was able to keep the family together through the 1840s with the help of Lewis’s family so Dudley’s childhood was hard at times, but he still had his family around him. The 1850s was a time when Mariah was trying to hang on to her husband’s claim to bounty land due to the fact he had served in the War of 1812. We see by 1860 the family is no longer together as many of them had been placed with other families or had simply disappeared from record. Mariah too disappears from records after 1855; we do not know if she died or just disappeared. Dudley was placed with the Butler family as the 1860 Census shows. Lewis had known John Butler for years. But life was about to change for Dudley as it did for so many young men.

In 1861 the Civil War began and Dudley and his brother Benjamin enlisted. They joined the 37th Infantry Regiment Indiana on October 1, 1861 at Lawrenceburg, Indiana. Dudley went into E Company. On May 9, 1862, the 37th and E Company were attacked at Elkton Station near Athens, Alabama. Five died and 43 were wounded during the battle and Dudley was captured. He was sent to Montgomery Prison Camp until October 19th when he was paroled and sent back to his unit. He spent a lot of time in the hospital due to illness until he was discharged from the army on October 27, 1864.

On March 5, 1874 he married Sarah Ellen Newberry in Mason County, Illinois. Until that date we have no record

of where Dudley was for the ten years between his discharge from the Army in 1864 and the marriage.

The couple had ten children; all but one survived to adulthood. Dudley was a day laborer and Sarah raised the children and kept the home. Dudley suffered from his old war injuries and consequently was unable to hold a permanent job for long. But he was able to make ends meet and support his family.

However, in 1902 he was admitted to the Soldiers and Sailors Home in Danville, Illinois for medical treatment. This would not be the last time he would be hospitalized; he was discharged in 1903 and went home.

He had received a pension from the military so he was able to support the family but by 1920 Sarah was also supplementing the family income by taking in laundry.

After suffering for years from his battle wounds and from his incarceration as a prisoner of war, Dudley was admitted to the Soldiers and Sailors Home in Quincy, Illinois

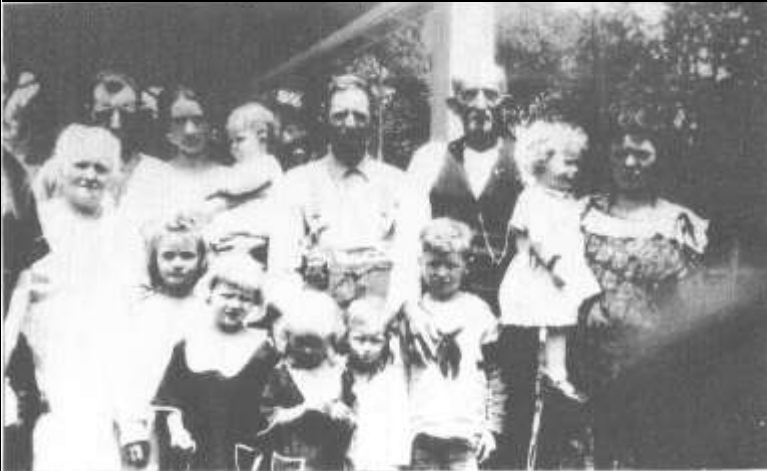
again in November 1924 due to his health.

On November 30, 1924 Dudley passed away at the age of 82. He is buried in the cemetery of the Soldiers and Sailors Home in Quincy, Illinois. Sarah survived Dudley eight years and she did marry again to David Auday a year after Dudley’s death.



Dudley Price

Dudley Price shown on the right back row and Sarah in the middle left with their family



Side By Side



Judy Rice

Member since 2014

I was born in Norwich, Connecticut. My marriage to a former spouse, on active duty in the Navy, brought me to Kitsap County in the late 1970s. The majority of my work career, retiring in 2011, was with the federal government in Kitsap County.

Q: How and when did you get started in genealogy?

After I retired.

Q: How and when did you come to join PSGS?

I attended the PSGS seminar in 2014 and joined right after that.

Q: What are your research goals?

My ultimate research goal is to complete an organized family history package to share with my daughter, grand-daughter and grandson. At this point a realistic estimate would involve researching back six generations on the maternal and paternal sides of my family.

Q: Any surnames and localities of special interest?

Maternal surnames are: Allyn, Schultz, Eck, Gudeahn

Locations are: Connecticut and Germany

Paternal surnames are: Avery, Tyler, Wilson

Locations are New York and Connecticut

Q: How have you contributed to PSGS?

I accepted the nomination, was elected and sworn in at the December Christmas Party to be PSGS 1st Vice-President. I have also volunteered in the library.



Kathy de los Reyes

Member since 1996

I was born in Hastings NE, and raised in Southern OR area. I majored in journalism and in 1968 had the honor of interviewing Robert Kennedy and Eugene McCarthy. I joined the WAC's in 1969, served in Vietnam before being stationed at Fort Monroe, VA. In 1983 I moved to Tacoma and finished college and worked at Subbase Bangor. While in the service I had my most difficult interview with Mrs. (General) Douglas MacArthur. She wore his stripes well! I re-entered service in the National Guard where I received the highest honor for life saving when Mt. St. Helen's blew her top.

Q: How and when did you get started in genealogy?

I was always curious about my ancestry, but really became involved in the 1990s. My family knew nothing about our ancestry.

Q: How and when did you come to join PSGS?

A friend brought me to a meeting and I joined in 1996. Marlys Marrs taught the first class I attended.

Q: What are your research goals?

Since I began my research I have traced my dad's side back to the 1400s in Ostfriesland and Holland. One of the Boltjes' homes built in the early 1700s is still standing and inhabited, but not by a family member.

Q: Any surnames and localities of special interest?

Paternal surnames: Boltjes, Johnson, Jansen, Walters

Locations: Nebraska, Ostfriesland, Holland

Maternal surnames: Stoetzel, Herz/Heinseman, Weigant, Rickel, Houston, von Blucher

Locations: NE Minnesota, VA, PA, IL, Scotland, Ireland and Germany, and the Dakota Sioux Tribe in New Ulm, MN.

Q: How have you contributed to PSGS?

Showing up and staying out of trouble.

Gail Reynolds'

Belfair Bulletin

Happy New Year! Best wishes for a fruitful year of genealogy. Also, as a new year's resolution, we always seem to want to get our genealogy research organized better. I am trying to get mine organized for our trip to Salt Lake City in February.

Our Belfair Chapter will be represented by six of our members on this journey. Those attending are Madi Cataldo, Linnie Griffin, Jackie Horton, Judy Joaquin, Marlys Marrs, and me. We are really looking forward to doing some intensive research.

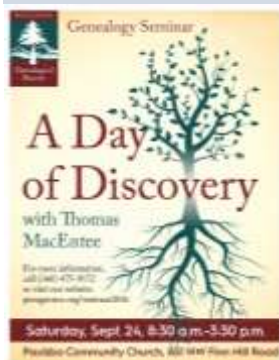
Our November meeting was our elections and Christmas Party. I am now the Chairperson for the Belfair Chapter. Madi Cataldo is our Board Representative. Judy Joaquin is Member at Large for PSGS and in charge of publicity for the Belfair Chapter. Linnie Griffin will be working on our programs for 2016. We had a great Christmas celebration. Everyone brought something tasty to eat and we played a game in order to distribute our gifts.

As you know, we had no meetings in December 2015 and January 2016. So we start our new year on February 3rd with a program from Mary Rodney. We have never had her as a guest speaker so we are looking forward to her presentation. March 2nd will be our first meeting after our sojourn to Salt Lake City so we will discuss our gems and brick walls that we encountered.

Our meetings are held on the first Wednesday of each month, February through November, at the Timberland Library in Belfair. We start our meetings at 1:00 pm. Everyone is welcome so please come to see what we are all about.

Seminar Update!

by Jean Yager



SAVE THE DATE!!

The next PSGS seminar is set for Saturday, September 24, 2016 at the Poulsbo Community Church (same place as the 2014 seminar).

The theme is "A Day of Discovery with Thomas MacEntee."

Thomas is from Chicago, Illinois and

a well-known genealogy speaker. He will present four lectures: "Managing the Genealogy Data Monster," "Successful Collateral and Cluster Searching," "Mapping Your Genealogy: From A to Z and In-Between" and

"Internet Archive: A Gold Mine for Genealogists."

Check out our website for more information about Thomas and the lectures at: www.pusogensoc.org/seminar2016

The cost is \$40 for PSGS members and \$45 for non-members, and includes tickets for the many drawings and a great lunch. Jim Johnson from Heritage Quest Research Library will have many books and genealogy supplies for sale; some relating to Thomas' lectures.

The seminar committee meets monthly on the second Tuesday at noon in the Heninger Room at Sylvan Way. Everyone is welcome to participate on this committee. Come join us!

A Story of the Wild West

by Hazel Thornton



Lafayette Shadley
1844-1893

It seems as though all the interesting family members are in my husband's side of the family. This one was a second cousin, four times removed. Lafayette Augustus Shadley was born on June 4, 1844, in Zanesville, Ohio.

His father and mother were Israel and Lydia (Baer) Shadley. He went by the name of Lafe. He married Malinda Randolph on February 4, 1866, in Davis County, Iowa. He spent three years in the Union Army during the Civil War. In 1879 the family moved to Drum Creek, Kansas. In November of 1879 he was elected Sheriff of Montgomery County and in 1881 was re-elected. From 1884 to 1888 he served as a deputy sheriff. In 1889 he became the chief of police of the Osage Nation, which was a difficult and dangerous duty. By 1893 he was a Deputy U.S. Marshal. He received a telegram from Deputy Marshal John Hixon about helping him out with the roundup of the Doolin-Dalton Gang, which turned out to be one of the deadliest confrontations in U.S. Marshal history. It is known as the "Battle of Ingalls."

The Doolin-Dalton Gang (also known as "The Wild Bunch") had found a safe haven in Ingalls, Oklahoma and Marshall Hixon organized a large posse of U.S. Marshals in order to capture the gang. Many of the gunmen were inside a saloon when they heard the first shots fired by one of the U.S. Marshals.

There is some discrepancy as to who shot Lafe. It is recounted that he was shot by "Arkansas Tom Jones" while another said he was shot by Bill Dalton. Doolin was killed at this battle and Dalton was tracked down and killed at his home the following year.

Lafe died of his wounds on September 3, 1893 and no less than 500 mourners were at his funeral. He has been memorialized on the National Law Enforcement Officers Memorial in Washington DC. It seems a shame that someone who lived through the horrendous Civil War would eventually be killed by a gang member.

Lafayette Shadley is buried at Mount Hope Cemetery, Independence, Kansas.

Outlaw Bill Dalton



Our Website has a New Look!

by Mary Ann Wright

The Website Committee is pleased to welcome you to our newly-designed website! We moved our web hosting services last October and that gave us the opportunity to make our site more responsive and easier for users to find the events and information that are most important to them.

Some of the new features are:

- A fresh look with cleaner navigation
- Rotating images on the home page that can easily be changed to reflect upcoming genealogy events
- More mobile-friendly for smartphone and tablet users
- A Google calendar so you can easily add events to your personal calendar
- Quick links to classes, the genealogy center, and events
- A social media link to our Facebook page
- A Members Only page that lets you use your own password to access

We hope you enjoy the new look. Please let us know how we did by emailing us at: psgs@pusogensoc.org

D A New Season of **Finding Your Roots!**
Y NEHGC's The Weekly Genealogist, Vol. 18, No.
K 47, Whole #772, December 30, 2015, reports:
 "We are proud to be the anchor filming location of the hit PBS TV series [Finding Your Roots with Dr. Henry Louis Gates, Jr.](#) Segments of all episodes of Season 3 were filmed here at NEHGS in our seven-floor research facility.

In this new season of [Finding Your Roots](#), Henry Louis Gates, Jr. traces the ancestral trails of 28 new guests including Senator John McCain, Gloria Steinem, Keenen Ivory Wayans, Neil Patrick Harris, Maya Lin, and Mia Farrow. Season 3 premieres January 5 on PBS at 8/7c."

Classified Ads



To volunteer for the Antique Show . . .

Contact: antique-show@pusogensoc.org



1301 Sylvan Way
 Bremerton, WA 98310
 (360) 475-9172 • www.pusogensoc.org

The Backtracker Staff

Editor Fran Moyer
 Associate Editor Mary Ann Wright
 Associate Editor Elisabeth Demmon
 Copy Editor Linda Wilson
 Layout & Design Fran Moyer
 Circulation Terry Mettling
 Distribution Linda Wilson