

# family Backtracking

*Puget Sound Genealogical Society Serves Kitsap and North Mason Counties*

<http://www.rootsweb.com/~wapsgs/homepage.htm>

1026 Sidney Ave., Suite 110, Port Orchard, WA 98366-4298

Volume XXII, Number 4

ISSN: 0735-682X

December 1997

## 1998 PSGS Officers



### Past President

William Berdette Richardson

Bill is the Immediate Past President for 1998. He served as President of PSGS for two consecutive terms -- 1996 and 1997.

Born in Everett but raised in Seattle, Bill attended the University of Washington where he

received a Bachelor of Science in Pharmacy. This degree became the means by which he was able to attend medical school. Because the University of Washington did not yet have a medical school, Bill attended the Northwestern Medical School out of state. In 1950, he served his internship at Swedish Hospital; then one year as a Pediatric Resident at Children's Hospital and one year at Harborview Hospital.

Bill began teaching at the University of Washington Medical School within a year of graduating. This lasted only a short time as he was called to private practice in Bremerton. Five years later he moved to the Doctor's Clinic while maintaining a clinical teaching position at Children's Hospital in Seattle. Upon retirement in 1984 from Doctor's Clinic, the University of Washington Medical School bestowed upon him a Professorship of Clinical Pediatrics.

Bill began genealogy at an early age. "I became interested in genealogy at a young age but did not interview older relatives

which is really a shame. My interest waned after a time." Bill said. "Then, while working at the Doctor's Clinic in Bremerton, Marlys Marrs, one of the three original members of the society, encouraged me to join when the club started in 1973. I did join, but not with enough enthusiasm. My interest waned again," he added. His interest piqued again in 1984 upon his retirement from the medical profession and this time he hasn't waived.

Over the years, Bill has been researching Richardson, Stover, Rinehart, Kindig, Tucker, Ferguson, Gill, and Phelps, among others. His research has carried through Pennsylvania, Ohio, Virginia, Iowa, Indiana, and North Carolina. In an effort to find out more about the history of the geographical areas of interest, Bill joined the Ohio Genealogical Society, Washington County, Iowa, Genealogical Society, and Randolph County, North Carolina, Genealogical Society.

Using Reunion software, Bill tracks his lineage. While an avid computer user, Bill has not yet jumped on the band wagon of the Internet but intends to do so in 1998.

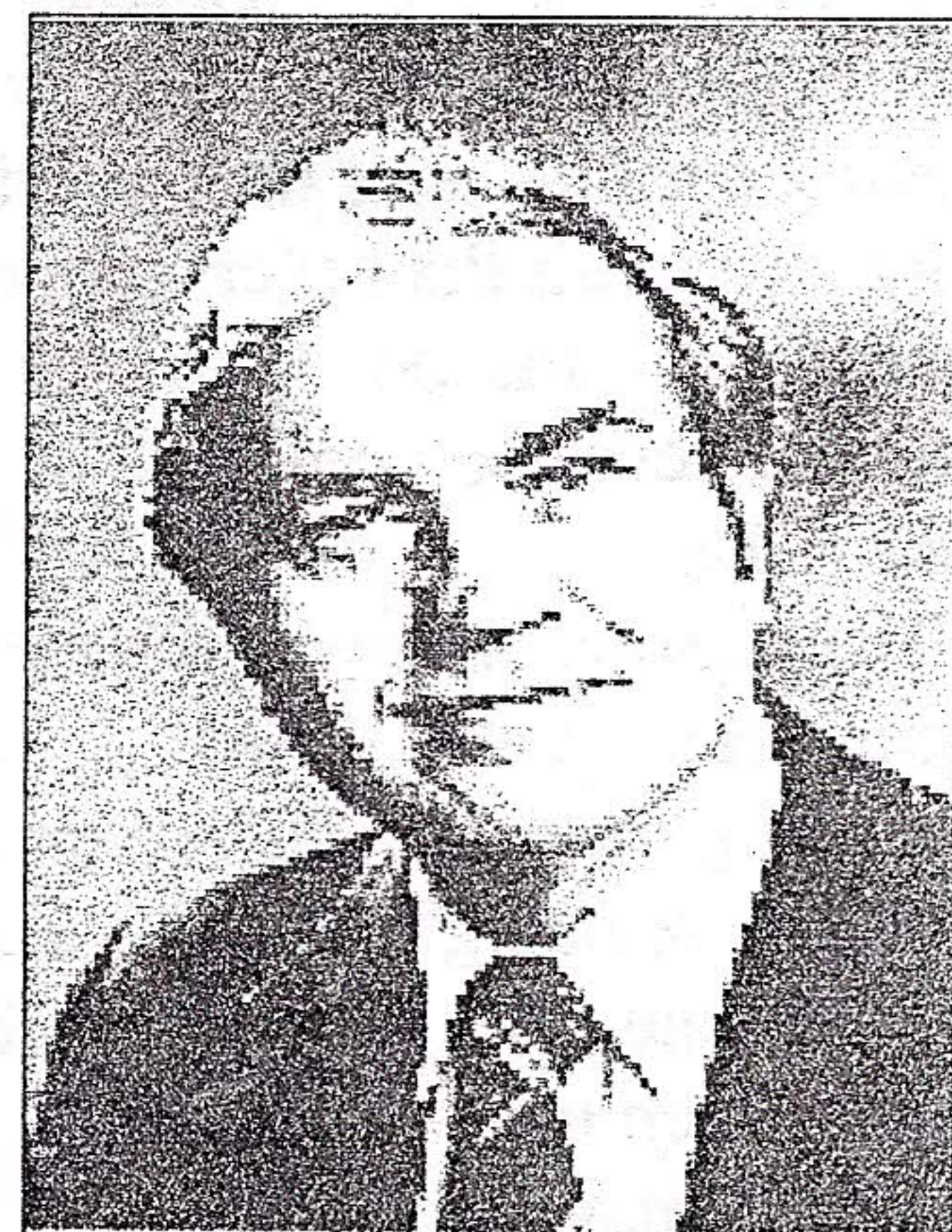
As Immediate Past President Bill continues in an advisory capacity to the Executive Board and acts as Nominations Chairman for 1998.

### President

Lawrence Arthur Swan

Larry was voted in as the new 1998 President of PSGS during the October 1992 general meeting. Although Larry has been involved in genealogy for less than two years, he has been very active in two genealogy societies during that time. In addition to being our new President, he has also been nominated for the position of Region III Representative for the Washington State Genealogical Society.

Previously, Larry held the position of President for two years



### INSIDE....

President's Message	42
Club News	43
Upcoming Courses/Seminars on Genealogy	43
Notes from the Library	44
News from the Internet	45
Genealogy 101- Evidence	47
Kitsap County Newspaper Holdings	50
Exchange Notes	52
1997 family Backtracking Index	54

1998 PSGS Officers continued on page 48



# President's Message

This will be my last note to you as President of PSGS and so, there are many members to thank for the countless hours of service to our Society; it has been maintained as an active, successful, and fruitful organization because of them. They have my gratitude and humble thanks for their many hours of service.

Volunteers who gave many hours include Cereice Cook (Library Acquisitions), Cindy Spore (Library Volunteer Coordinator and Nominations Chairman), Lorraine Kniert (Phone Tree Chairman and volunteer librarian), Pat Eder (Publicity Chairman and editor of "Exchange Notes"), Larry Harden (volunteer librarian), Madi Cataldo (Nominations), Linnie Griffin (Givens Christmas Bazaar), Lisa Miller, Terry Mettling, Jean Yager, Deb Redfearn, Cyndi Baker, Wes Koentz, Jerry Dailey, and Doris Watson (publications typists), Wes and Gerry Koentz (all-around volunteers), Nancy Carter, Ida Mae Swedborg, Marie Waldron, Dianne Enos, JoJean Harrah and Nadine Ruyle, Cindy Baker, Madge Norton, Clara and Frank Porter, and Larry Swan (all library volunteers), and the list goes on!

Some of the volunteers I would especially like to thank are my Executive Board members [Fred Ward (1st VP), Lois Roark (2nd VP), Margot Delgado (Recording Sec), Ralene Guy (Correspondence Sec), Cyril Taylor (Treasurer), Marj Menees (Librarian and Nominations), and Andi MacDonald (Newsletter Editor, Publications, Web Site)] who gave many hours to the society. Our library, under Marjorie Menees as librarian, has been completely re-catalogued and has continued to grow with various types of planned and useful accessions. *family Backtracking*, thanks to the expertise of the new editor, Andi MacDonald, continues to be a creditable genealogical publication. Also, her efforts, along with other volunteers mentioned above, have led to the organization of new and old records in order to prepare them for publication in the near future. And, her development of a functioning web page has kept us up with the current electronic communications media. Without the team efforts put forth by the Executive Board, the year would not have run so smoothly.

One final word, and something I hope that each of us remembers as genealogy enters into the electronic age, is that the need for proving our claims of lineage with original documents will become more important than ever. We must also not forget the careful, accurate, and thorough research which is and will be done by those who will never be "on-line" or use a computer to read compact disks (CDs).

The rapidity with which sources for research are appearing is phenomenal. On-line hunting has opened up another rapidly expanding ocean of material and all sources which we use for research are being condensed and indexed on CDs. Searching massive quantities of records is becoming progressively faster and easier. Even many scanned-in original documents are appearing on-line in many jurisdictions.

The future of genealogy for the entire world seems to me to be very exciting with many new frontiers. It is easy to jump on this new electronic "band wagon" and become careless. We must always keep in mind the sound and proven basic principles that should be used in doing our research.

Bill Richardson

## Puget Sound Genealogical Society

### Executive Board

President:	Bill Richardson
1st Vice-President:	Fred Ward
2nd Vice-President:	Lois Roarke
Treasurer:	Cyril Taylor
Recording Secretary:	Margot Delgado
Correspondence:	Ralene Guy
Library:	Marjorie Menees
Newsletter Editor:	Andi MacDonald

### Committee Chairmen

Nominations:	Cindy Spore
Phone Tree:	Lorraine Kniert
Publications:	Andi MacDonald
Publicity:	Pat Eder
Ways & Means:	
Salt Lake City Trip:	Marlys Marrs

### Meetings

Meetings are held at the Givens Community Center, 1026 Sidney Ave., Room 110, Port Orchard, Washington, on the fourth Tuesday of each month except December which is announced each year at the October meeting. Times for meetings are 7:00 pm. for March through October and 1:00 pm. for November through February. Visitors are welcome.

The Belfair Chapter meets on the first Tuesday of each month at 1:00 pm. in the North Mason Timberland Regional Library, N.E. 23081 Highway 3, Belfair, Washington.

### Membership Fees

Single membership is \$12 and family membership is \$15 per year. Membership includes free use of the library and a yearly subscription to *family Backtracking* published four times per year. Send membership application and fee to PSGS Membership, 1026 Sidney Ave, Suite 110, Port Orchard, WA 98366-4298.

### Library

Our library is located at the Givens Community Center, 1026 Sidney Ave., Port Orchard, Washington in Room 110. Hours are Monday through Friday 10:00 - 4:00. Phone: (360) 874-8813.

### Queries

Questions may be sent to our genealogy society for investigation. A charge may be assessed for intense searches lasting more than two hours. Queries for the newsletter may be sent to The Editor, *family Backtracking*, 1026 Sidney Avenue, Suite 110, Port Orchard, WA 98366-4298. Queries will be placed as space permits.

### Newsletter

*family Backtracking* is published four times per year, March, June, September, and December. Due dates for material submitted are the first day of the month prior to publication. Materials must be camera ready and of high moral standards. Manuscripts, announcements, and items for review should be mailed to: The Editor, *family Backtracking*, 1026 Sidney Avenue, Suite 110, Port Orchard, WA 98366-4298. *family Backtracking* will announce genealogical events and publications from genealogical societies, archives, or libraries at no charge as room permits.

The articles, reviews, advertising and news items in this publication do not necessarily reflect the views or support of PSGS or *family Backtracking*. We are in no way liable for inconvenience or monetary loss to readers which may be the result of recommendations made in articles, reviews, or news items.

COPYRIGHT 1997  
All Rights Reserved



# Club News

PSGS publications are on-track. After the publications chairman started the book, Lisa Miller volunteered to take over and has been working hard on the Marriage Index, 1860-1915. The book contains complete entries of marriages during that time and now fills over 100 pages. The index, due to be complete by the end of the year, will probably fill an additional 50 pages. Lisa has spent many, many hours on this project.

Obituaries, Misc. is on-going. Donna Powell has spent many hours placing each obit in a format that was then placed in a binder. She is now ready to start adding page numbers to the existing index that Dick Helander put together. In addition, Mrs. Jerry Dailey, is starting a new batch of obits and when complete, will add them to the existing obits and index. Jean Yager continues sorting and indexing an additional group of obits which will be incorporated at a later date. Lori Brennan and Nadine Tietge continue to cut out new obits and deliver them for future indexing.

Wes Koentz and Terry Mettling are finishing up the last few sections of the Naval Hospital Records, 1900-about WWI. When complete, we will be able to compile all the various sections and begin to work on the index.

\*\*\*\*\*

You can find your 1998 Membership Form in this issue [hint, hint ;-)]. To help us identify those of you willing to do volunteer work, we have included more information and blocks for you to check for volunteering. Won't you take a moment and complete the form? When done, hand the form to any Executive Board member or mail it to PSGS for processing (address is on the form). The March 1998 edition of *family Backtracking* will be available at the February meeting. Those not picked up will be mailed shortly thereafter. Members who have not paid their renewal or membership fee by that meeting, will not receive their issue until the June newsletter is mailed. (We must have 200 issues minimum to get the reduced rate.) Get your 1998 dues in by the February meeting!

\*\*\*\*\*

A New Member Packet has been completed and will be available to all members in the March 1998 issue of *family Backtracking*. The packet contains information about PSGS (meeting dates/times, publications, a brief history, goals, latest by-laws, etc.), has a 1998 supplement with information about PSGS specific to the year, and information from other societies and organizations. After 1998, only new members will receive the packet -- those renewing their membership will not.

\*\*\*\*\*

Another item included in this issue is a survey. We ask that you take about 15 minutes to answer the questions. These are going to be used to create a "Media Kit" for sending to prospective advertisers. We are not requesting your names or any identifying information. Please help us out by returning your completed survey to 2984 S.E. Aspen St., Port Orchard, WA 98366, or by dropping it off on Monday or Friday during the library's regular hours (10:00 - 4:00).

\*\*\*\*\*

In the last issue of *family Backtracking*, in the article titled *Volunteers...*, it was mentioned that the hobby of genealogy is growing by leaps and bounds. One indication of this is the courses being offered by various institutions is growing very quickly yet cannot keep up with the demand. The course offered by the UofW is full for Autumn. If you are interested in any professional training, it is recommended that you register very early.

## Upcoming Courses/Seminars on Genealogy

**How to Write a Family History**, begins January 1998 at Olympic College. Call (360) 478-4504 for more information.

**Beginning Genealogy** courses, begins in January 1998 through Central Kitsap Community Schools. Call (360) 692-3171 for more information.

**Salt Lake Institute of Genealogy.** One-week-long courses designed for various levels of experience. Teaching Genealogy: How to Spark the Fire in Their Lives; Advanced Methodology: Paying the Price to be Successful; Researching Scottish Ancestors: Strategies and Sources for Success; Eastern States Genealogy: Beyond the Basics; Eastern European Genealogical Research: Solutions for Success; Intermediate U.S. Research for the Occasional Genealogist; Genealogy Writing: Getting Your Message Across; Introduction Genealogy Computing: Power at Your Fingertips; and Advanced Genealogy Computing: Your Hard Drive and Beyond. Application deadlines are 1 December so hurry and get yours in. For more information, contact 1-888-463-6842 or see the brochure on the bulletin board in the library.



# Notes from the Library

by Marj Menees

A few Tuesdays ago, Bernard and Geraldine KOENTZ spent a volunteer work session with us. As you know, we already had an inventory work party, but we needed to have the shelves checked and put back in order so that we could re-check for missing books. They not only did that, but they also filed some of the periodicals that have been piling up. Both jobs are on-going and need tender loving care.

We are still trying to complete the sorting and cataloging of periodicals that have been donated to us. Pat EDER reviews all the periodicals as they arrive in the mail. Then she brings them in to be made available to all library patrons. I put them in the open files on top of the metal cabinets -- replacing those that are out of date with the new. Those that are pulled from the current files need to be shelved. We cannot do that, keep the new books cataloged and shelved for you, work at the continue to organize the library, work toward the new library catalog, and shelve periodicals also. WE NEED HELP. We need someone who will come in to the library, preferably twice a month but at least once a month, for the sole purpose of updating the periodical shelving. That time could be on our Tuesday work days or it could be on either a Monday or Friday library day. Once all the waiting periodicals are shelved, keeping them up-to-date would not be a lengthy task.

We continually receive donations from members for which we are very grateful. In September, Clara PORTER donated the following three items: VISUAL ROOTS computer program, TOWN MEETINGS OF CARMEL, NEW YORK, and some papers from the New England Genealogical Society. Frank BAILLIE gave us a hard cover HAMMOND CONTEMPORARY WORLD ATLAS, 1972. This was one of many books that Frank has given to us. In a future *family Backtracking*, I will be listing past donations and their donors.

Many of us have southern roots. Some of these folks were living in the Confederacy and were loyal to that government -- they served in the military, they gave needed supplies to the armed forces, they served in government offices, and if unable to do any of those, they stayed at home, in the city or in the country to keep

the home fires burning and the crops growing if they could, and to nurse the wounded who might be billeted nearby.

Other of these folks, however, were loyal to the union. And their life was even harder than that of those who believed and supported the Southern cause. Some of these pro-Unionists were wealthy planters and slave owners, of which a number were northern born. Some of them were laborers who felt that the conflict was a "rich man's war and a poor man's fight." A good many of these union loyalists believed that the union which had been cemented by the blood of their fathers and grandfathers had to be preserved.

In our library is the book *SOUTHERN LOYALISTS IN THE CIVIL WAR: THE SOUTHERN CLAIMS COMMISSION - A Composite Directory of Case Files Created by the U. S. Commissioner of Claims, 1871-1880, Including Those Appealed to the War Claims Committee of the U.S. House of Representatives and the U. S. Court of Claims*, by Gary B. MILLS, Genealogical Publishing Co., Inc. This is an interesting book to read whether your Southerners were confederates or unionists. It not only gives a picture of these loyalists but it lists those who after the war made claims to the government for recompense. As in the Revolution, troops that took goods were to leave with the owners a receipt for the same to be paid after the war was over.

The Southern Claims Commission was created in 1871 to take care of this government debt. And typical of such procedures, by the settling-up time of 1880, only about a third of all the claims were paid and were paid at a greatly reduced amount. According to MILLS, the reason for this was that "it took much fortitude and patience for the claimants to stand up under the intense, minute, and often absurdly rigid investigation and qualifying tests."

Look for this little book on the shelf under military records. It won't take long to read the introduction which gives another glimpse of the Civil War -- and check to see if you had a family member who received some compensation.

## Genealogy Supplies

Keeping Memories Alive

P. O. Box 728

Spanish Fork, UT 84660

(800) 947-3609

<http://www.scrapbooks.com>

Lots of items, one of the better suppliers

Genealogy Unlimited, Inc

P. O. Box 537

Orem, UT 84059-0537

1-801-666-4363

<http://www.itsnet.com/~genum>

Archival Storage Protectors, Albums & Misc

The Memory Corner

1312 McKinley Ave

Norman, OK 73072-6535

(405) 321-8366

<http://members.aol.com/THCorner/index.html>

Larger variety than anyone else.

Metallic Reflections

P. O. Box 48947

Phoenix, AZ 85075

(602) 873-0243

<http://www.extremezone.com/~metallic/family.html>

Christmas Ornaments and more

The Paper Zone (archival supplies, photo album

3304 S 23rd St. supplies, more)

Tacoma, WA 98405

(253) 572-5157

Michael's (photo album supplies)

4205 Wheaton Way

Bremerton, WA 98310

(360) 479-8789

This is the Place (everything for the genealogist)

9960 Silverdale Wy NW

Silverdale, WA

(360) 613-2777



# News From the Internet

**PREPONDERANCE OF THE EVIDENCE:** In a recent press release, Gale Williams Bamman, CG, president of the Board for Certification of Genealogists (BCG), announced that the term "preponderance of the evidence" will no longer be used by BCG. The term was borrowed from the American legal system where it describes the standard of proof necessary in civil trials; but modern genealogists have come to require a higher standard of proof. The term also has been used to describe how complex genealogical evidence problems should be resolved; although, the genealogical community has not reached a consensus on procedures to be followed. Press Release, BCG.

\*\*\*\*\*

The *Family History Show, USA* is now live on the Internet worldwide! The program is broadcast on the Texas State Network on about 20 local and regional radio stations in Texas; heard on-the-air across several Central and Southwestern states. It can now be heard anywhere in the world with RealPlayer software which is available for free download at the Internet site below. An audio card such as SoundBlaster and audio speakers are also required. Three month download information: <http://www.realaudio.com/products/player/index.html>

The program, hosted by Michael Matthews of Texas, features weekly guests who are research authorities on a wide range of states, regions, ethnic groups, and other genealogical topics. All listeners in the United States are invited to call with their questions and comments on our toll free number: 1 (800) 765-1080. If you get a ring, you're in. You may have to wait 10-20 minutes to be on-the-air.

More than 180 knowledgeable guests have participated on the program since it originated in December 1994. Librarians, state archivists, college professors, columnists, computer experts, professional and amateur genealogists, lineage and genealogical society representatives, family association representatives, newsletter and

quarterly editors, research specialists, noted historians, and others have been featured.

The Family History Show, the first and only "network" radio talk-show devoted to genealogy in the USA, broadcast live and interactive:

11:06 pm to 1:00 am (East Coast)

10:06 pm to Midnight (Central)

9:06 pm to 11:00 pm (Mountain)

8:06 pm to 10:00 pm (Pacific)

Our website <http://www.ridethewave.com/familyhistory> features a schedule of upcoming guests and additional information. *The Family Historian* is published quarterly as an informative companion to the show with articles, queries, numerous family reunions and genealogical events, news, lots of information on resources, letters, guides, a guest schedule with photos, and a new feature, "Texas Connections," which seeks to unite researchers working the same or collateral lines in counties all across Texas. "Connections" in other states planned in the future! This publication and the program are devoted to help cousins get together, keep everybody informed, and help foster an interest in family history.

\*\*\*\*\*

Heritage Quest Library in Orting, WA, has a new email address... it is [HQRL@aol.com](mailto:HQRL@aol.com). They also have a web site up and running!! The address is <http://members.aol.com/hqrl/index.html>. There are still some finishing touches to add and there are a couple of pages that need to be built --but most of it is finished and in use!! HQRL is asking for feedback...just email them at [HQRL@aol.com](mailto:HQRL@aol.com).

\*\*\*\*\*

An article on ordering military and pension records for Union Civil War Veterans from the National Archives can be found at <http://www.oz.net/~cyndihow/pensions.htm>.

## Cyndi's List

Link lists of genealogical web sites are only useful when they are logically organized with each link being accurately titled. Daily quality control to correct moved or changed links is also required to keep a link list from suffering the obsolescence of "link rot."

Cyndi continues to work on Cyndi's List every day and to add new & logically organized categories so that visitors can find what they seek while avoiding the irrelevant. Cyndi's new categories include pages & sections on Chat & IRC for genealogy, Canadian Military resources, and How To for Kids & Teens.

Cyndi has also added a General Resources section to her long-

established Professional Researchers page. Links in this section include information on what to look for when hiring a professional genealogist and professional certification programs for genealogists.

The new Cyndi's List mailing list for daily update announcements about Cyndi's List has been a big success with over 800 subscribers already. Visit <http://www.oz.net/~cyndihow/maillist.htm> for details.

Visit and see why the San Diego Union-Tribune calls Cyndi's List "the great-grandmother them all" for genealogy web pages. Cyndi Howells via PSRoots.



# Queries

Following are queries that have been mailed to PSGS for research in Kitsap County. Below each query are the results volunteers at PSGS came up with. If you have further information, please contact the individual. If you have a query for the volunteers of PSGS to investigate, send a SASE to Correspondence Secretary, 1026 Sidney Ave., Suite 110, Port Orchard, WA 98366-4298. A charge may be assessed for intense searches lasting more than two hours.

## BADERTSCHER

We are seeking a copy of an obituary for a **Victor Badertscher**, who died sometime between the years 1939 - 1949, in Bremerton. He supposedly was involved in a shooting?? Unfortunately, we do not know the exact date of death. His cousin related to us that there was a story in the Bremerton newspaper related to his death, but could not remember when exactly it was. Is there an index to the Bremerton Newspaper? Cary Redwine, 417 Gales Creek Rd., Forest Grove, OR 97116.

*An article on the shooting of Victor Badetscher, a 46-year-old coast and geodetic survey employee was published in The Bremerton Sun on Monday, August 9, 1954, Page 12. A copy was forwarded to Cary. Larry Harden, Volunteer.*

## HOPKINS/ANDREWS

Am looking for a newspaper article or any information on **Rinear Hopkins** and **Eva Andrews** who were married in Port Gamble on 29 Sept 1873. The preacher was **G. H. Atkinson**. Witness was **Geo. Stetson**. The marriage license was issued King County on 24 Sep 1873. Thomas Hinkleman, 20402 Church Lake Rd. E., Sumner, WA 98390.

*Marriages, 1860-1915 were checked for Hopkins and Andrews. An Eva A. Andrews marriage was found but for a housewife, age 27, on 31 March 1913. Husband was C. D. Beal, age 34; this was his first marriage and her second. No marriage entry found for a Rinear Hopkins and Eva Andrews in 1873. G. H. Atkinson is found officiating a wedding first in 1882 and last in 1883. There is no Geo Stetson found in the marriage records as a witness. Complete entry for 1913 wedding included. Andi MacDonald, volunteer.*

## JONES

**Mary (Jones) Jones** was born 6 April 1845 in Cwmbran, Wales, England. She is reported to have married **Thomas Jones** 18 August 1866, place unknown. I believe they were in Lemars or Peterson, Iowa, at some point around 1875-80, as the whole family is reported to have been there. (I can sort this out through the census records.) Children of Mary and Thomas were: **Eliza Ann**, **William**, **Martha**, **Job Thomas**, **Sara Jone**, **Oliver Edwards**, **Rachel Mae**, **Alonzo Newton**, **Alice Rowena**. Eliza was born in 1867, Alice Rowena 1885. I have some dates, spouses, and children for the other children as well. I can pass the info along if

it would make it easier to research. I know that Mary died in Port Orchard, but I don't have any idea when. Anne Szymanski, P. O. Box 1058, Cupertino, CA 95015; ans@windridge.com

*Two funeral home entries were found for Mary; Three funeral home entries and one probate entry were found for Thomas; One funeral home entry was found for Eliza; Three funeral home and two probate entries were found for William; one probate entry was found for Job; and one funeral home entry was found for Alice. Information on agencies to contact was forwarded to Anne Szymanski for further inquiries. Andi MacDonald, volunteer.*

## BRIGHTMAN/PACKARD/REEVE/RICHARDSON

I would like to request information about the Packards of Eagledale, Winslow, Bainbridge Island. My grandmother **Maryan (Packard) Shinabarger** tells me that there is a street in Winslow named Packard, and I was wondering if that was true. Eagledale was the name of the house in Winslow they lived in in Winslow. The names I am interested in are **Ida F. Brightman**, born 10 Feb 1891, died 26 May 1925, Eagledale, Bainbridge Island, married **Irvin Albert Packard** of Snohomish, 22 Jan 1910; born 8 May 1910, died 22 Dec 1944, Seattle. **Grace Reeve**, **Alice Lily Reeve** -- father, **Alanson Reeve**, born 2 May 1830, Richland Co., Ohio, died 7 Nov 1886, Port Madison, WA. Mother, **Helen May Richardson**, b 17 Sep 1836, Vermont, died 1 August 1923, Port Orchard, WA. The information I have comes from my grandmother, Maryan Packard, and she told me that there was a Packard Street. I was wondering if there is any record of Eagledale, or the Cemetery near the house where they are buried. I was also wondering about how Winslow was named. Patrice Shinabarger, 4822 S. Raymon, Seattle, WA 98118.

*An entry was found for Ida F. Packard at Port Blakely Cemetery in 1925 and in 1941 for Irvin A. Packard. Other Packards were also buried at Port Blakely Cemetery and two were found at Retsil. Also found a Probate for Alanson Reeve and a Probate for Helen M. Reeve. Recommended for determining street and house names on Bainbridge Island that Patrice contact the Bainbridge Island Chamber of Commerce. Information on cemeteries and Probate were also forwarded. Andi MacDonald, volunteer.*

## Soldier's Homes

I am searching for information on two old soldier's homes, one was supposed to be in Orting, WA, and the other in Retsil, WA. Would your society have any information on either of these homes? When they were in operation and when they closed? Would there be a list of those who lived there and when they died? Peggy Cunningham, N 4503 Corrigan, Otis Orchards, WA 99027.

*The following addresses were forwarded to Peggy for contacting the old Soldier's Homes directly. Retsil Veteran's Home, Miriam Young, P. O. Box 698, Retsil, WA 98378, (360) 895-4722 and Washington Soldier's Home, P. O. Box 199, Orting, WA 98360, (206) 840-6560. Andi MacDonald, volunteer.*



# Genealogy 101 - Evidence

by Andi MacDonald

As in any scholarly work, genealogy too has its "evidence" which supports a claim. In the world of family history (genealogy), there are three kinds of evidence -- primary, secondary, and other. Deciding whether supportive documentation is primary or secondary evidence is a tumultuous affair. And, what if it is neither?

Primary sources are the foundation upon which you base your claim of family history: primary sources, by themselves, support a claim. Secondary sources should be used to establish a claim only when primary evidence is absent. And, secondary evidence is almost always usable as a resource for further research. It is best if there are at least two and preferably three pieces of secondary evidence to support a claim when no primary evidence can be found.

So often we hear that vital records or family bibles are primary evidence and can establish a claim of lineage. Unfortunately, this is not always true. The definitions of primary and secondary evidence are the most important things to remember.

**Primary evidence** is any documentation which was done at the time of an occurrence or shortly thereafter and documented by a person the event actually occurred to or by a person who witnessed the event.

The following items are usually considered to be primary evidence but only if in original form (not an abstract or transcription):

- Birth certificates
- Baptismal records
- Marriage licenses or certificates
- Wills
- Family bibles where it is clear that the entries were done at the time of the event
- Sworn statements in a court of law
- School records
- Deeds
- Cemetery records

**Secondary evidence** includes any documentation of an event written much later than when the event occurred or documentation of an event by second-hand knowledge.

There are certain types of records that are automatically in this category. Remember, this type of evidence is merely a lead to finding primary sources. Some items which are automatically in this category include:

- Indexes compiled from original records
  - Biographies
  - International Genealogical Index (IGI) of the Family History Library in Salt Lake City, Utah
  - Family Search records of the Family History Library in Salt Lake City, Utah
  - Bible records written out of order or all at one time by the same hand
  - Newspaper articles
  - Obituaries
- In our family histories, the best evidence is primary and each

event we are claiming to have happened should be backed up with a primary source. To not do so is to lessen the authenticity of your scholarly work. Deciding to publish a family history or a pedigree without proper source citations (of primary evidence) is the equivalent of writing a fictional story about a family residing in outer space -- fun to read but not a true account.

Further information on this subject can be found in a new book titled *Evidence!* written by Elizabeth Shown Mills, a leader in genealogical research.

Citing your "sources" is the most important thing you can do in establishing your pedigree. Source citations become the evidence that proves your family history to everyone that reads it. Citing your sources is extremely easy once you learn the basics; however, there are a few different standards which can be used.

The Church of Jesus Christ of Latter Day Saints (Mormons) developed Personal Ancestral File (PAF) which is widely used by genealogists for recording their family information. Version 2.31 came with a card enclosed titled *Documenting Sources*. This card sits next to my computer and as I enter information into my PAF program, I put information on all primary and secondary evidence in a format identified in *Documenting Sources*.

While it is time consuming when first learning how to properly cite sources, the card provides detailed information on how to properly cite sources of all kinds including birth, death, census, parish/church, bible, cemetery records, land records, and so on.

The newest version of PAF is a bit easier to use as it provides fields in which to enter requested information and the program puts together the source citation.

Either way, citing sources as you enter the information is the best way to go -- don't wait too long or it will be much more difficult and time consuming to look everything up again, locate the correct person, go to Notes, and enter the proper information.

The generic format which PAF recommends using is as follows:  
TAG: TITLE; years covered; unique source identification; specific reference; general reference; notes.

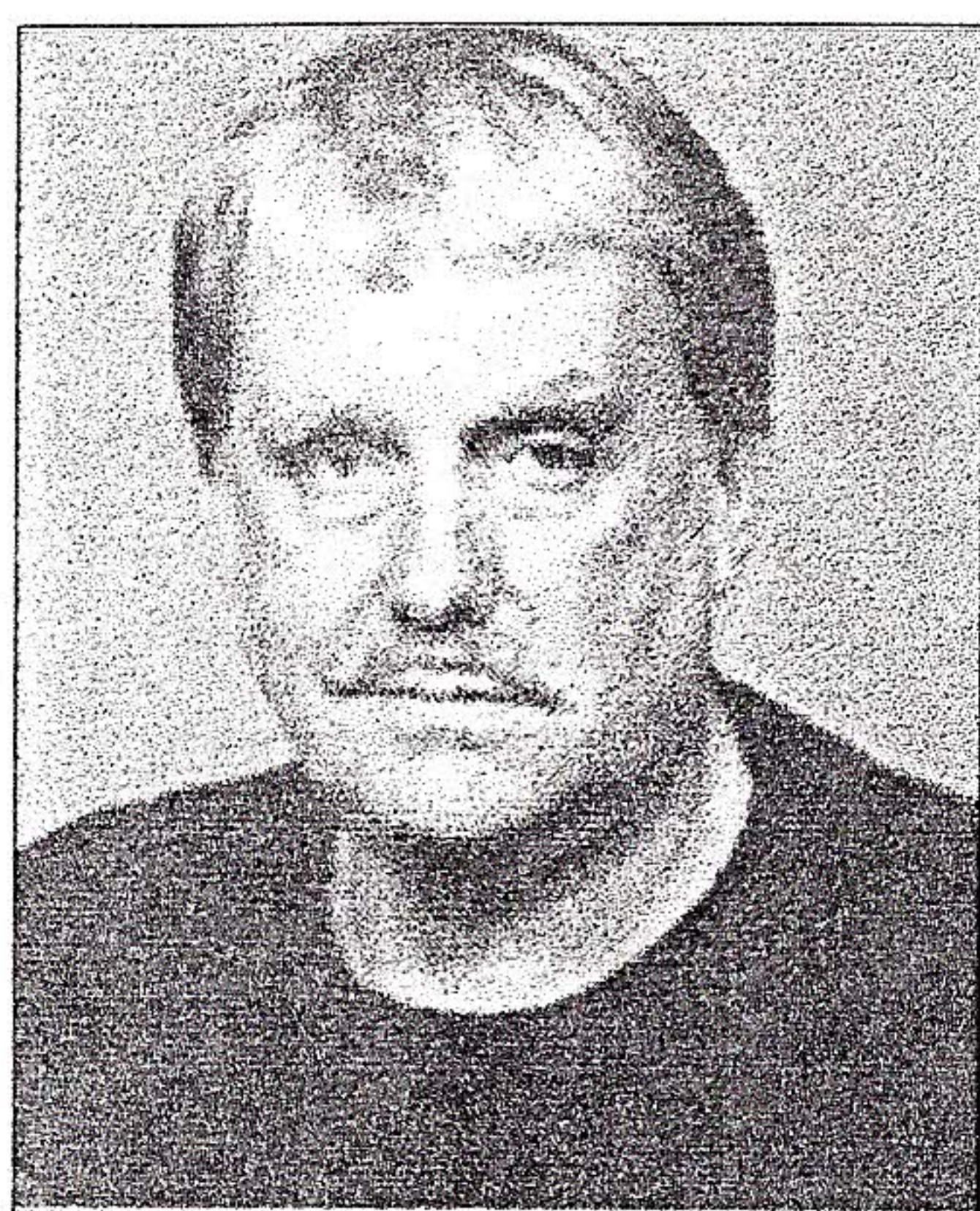
To enter a vital record such as my birth, the source citation would be as follows:

!BIRTH-PARENTS: Birth Cert; 1953; Dept of Vital Statistics, Olympia, WA, Cert 12345; ; in possession of Andrea MacDonald, Port Orchard, WA.

As stated before, there are different methods to citing your sources. William Dollarhyde published a book (which is also widely used as a guide) titled *Cite Your Sources*. The book is available at the Tacoma Library and if you ask around our society, someone is sure to have a copy you might be able to borrow. This book is fairly small -- actually a soft cover pamphlet which gives samples of correct source citations.

Whichever method you decide to use for citing your primary or secondary sources, be sure to include all information needed for another person to go to the exact same spot you did and find the exact same piece of paper. Citing your evidence is easy to do and will make your family history project a scholarly one. Don't let your work be cast aside in the future due to poor citations today.





## First Vice-President

Lawrence Edwin Harden

As 1st Vice-President, Larry's main function will be to secure speakers or prepare programs for each meeting. With two hundred plus members it is difficult to come up with subject matter that is interesting to everyone, but he intends to try to find something that at one time or

another will be interesting to most of us, with the goal of attracting a large turnout at each of our monthly meetings.

Larry has been a member of Puget Sound Genealogical Society for two years, and while this is the first Executive Board position that Larry has held in PSGS, he has been very active in volunteering at our library. Previously, Larry has been Treasurer of the Shilohwood Community Association for seven years, Treasurer of Glenwood Station Homeowners Association for five years, and Treasurer of Cub Scouts for two years.

Larry is married to the former Sonja Elizabeth Lorentson and is retired from Puget Sound Naval Shipyard. Over the last 12 years, he has been a hobby genealogist researching the names Harden/Hardin/Harding, Hurd, Lofgren, Newby, Hopkins, Watkins, Osborn in North Carolina, Kentucky, Indiana, Iowa, Kansas, Oklahoma, Colorado, and California.

"Besides the obvious reason of discovering who my ancestors were, there are other reasons I conduct genealogical research. The more information I discover about my ancestors, the more real these people become, and the more fascinating. Genealogy personalizes history for me and I feel a closer connection to the events I read about in school. I also enjoy the researching part, to be able to hunt for something and the enjoyment of finally finding (sometimes) that lost piece of information. I also (usually) meet a lot of nice and helpful people." [lharden@ix.netcom.com](mailto:lharden@ix.netcom.com)



## Second Vice-President

Lois Lynne (Limbocker) Roark

Lois continues for another year as our 2nd Vice-President. This year her goal is to develop an aggressive membership drive that will bring new insights, excitement, and talent to our group. Lois believes that active, participating members are vital to the growth and financial capabilities of our club, enabling us

to provide a variety of research material and better equipment to access it.

Lois has been a member of genealogy societies for ten years; PSGS, Washington County, Iowa, Genealogical Society, and North Kansas Genealogical Society. The primary names she is researching are Limbocker, Madsen, Brown, Fischer, Bentley, George, Kendrick, Schwab, Roark, Cockerham, Francis, Hopkins in the Eastern, Midwest, Southern, Southeast, and Atlantic United States.

"PSGS is that 'cozy nook' everyone needs occasionally for rejuvenation and encouragement. When I am ready to quit, someone takes my hand and when I can't remember how, someone guides my thoughts. When I run out of ideas, someone always has one I haven't tried. And when I achieve some small success, some poor soul is always there to listen and congratulate me. I am very grateful to this group of like-minded friends for their support."

Looking to the future of the society, Lois would like to "encourage a one-time monetary pledge from all our members to benefit the fund we have set up for a reader/printer for microfilm and microfiche. A Christmas present to the Society from us all. In this way, a much needed item could be just around the corner and perhaps encourage more use of our library."

Lois and Randall Kendrick, her significant other, own a computer business, COMPRO, in Port Orchard, WA. [lroark@oz.net](mailto:lroark@oz.net)

President continued from page 41

and Treasurer for an additional two years for the Society for the Preservation and Encouragement of Barbershop Quartet Singing in America, Inc., Kitsap Chapter. And, for one year, was President of the Evergreen Bonsai Club.

Retired from Federal civil service as an Electronic Engineer, Larry and his wife, Patricia Ellen Adams, resid in Bremerton. He has spent the last couple of years researching Swan, Swanson, Olson, Lemke, Williams, Day, and Cismoski primarily in South Dakota, Wisconsin, Michigan, Ontario, and Illinois.

Larry enjoys learning about the extended family which, he says, he didn't know existed. As he learns about this extended family, he researches their occupations, where they come from, and their present circumstances, and uses Family Tree Maker to keep track. All this to provide a detailed history his own descendents.

Some of the many things Larry enjoys most about PSGS is meeting new people, learning more about research procedures, discussing family ties and circumstances, and learning more about the history of

Kitsap County. He hopes that PSGS will continue getting information out on the Internet and, he says, "We must upgrade and improve our computer systems so that members who cannot afford a computer or are computer phobics can learn to use a computer for genealogical purposes." Recruiting more computer help could help to attain this.

One of Larry's goals for 1998 is to provide more education for beginners in addition to program speakers. To accomplish this, Larry feels that our more experienced members must share their expertise with groups of beginners.

Promoting volunteerism was a goal of the 1997 Executive Board; the 1998 Executive Board expects to expand on it. Larry believes "the heart and soul of an organization such as ours are the people who step forward and do the many mundane and routine jobs which keep us going."

Communication is another concern for Larry. He feels we "need to take a close look at how we communicate with our members." If you have any ideas, thoughts, or concerns about PSGS, Larry can be contacted via email. [lswan@silverlink.com](mailto:lswan@silverlink.com).





## Treasurer

Cyril T. Taylor

Cyril has been a member of PSGS for over three years. Of those three years, he has served two as Treasurer and is headed into his third. As the Treasurer, Cyril is required to receive and deposit monies, write checks in payment of expenditures, and to keep an accurate record of all transactions. His goal is to record the society's transactions in a timely manner

and prepare monthly, easy-to-read financial reports; financial reports that at a glance show the society's current monetary position.

Cyril is retired from the King County Financial Division as a Financial Accountant and brings with him many years of financial experience. He and his wife, Lee-Yen are both very active members of the Givens Center's senior citizen group; Cyril also acts as their Treasurer.

Cyril has been a hobby genealogist for over five years and is currently researching Taylor, Joy, Ross, Kelley, Daman, Stevens

(Dorset, England), Davies, Matthews (West Glamorgan, South Wales, England), Wynn, and Farmer (Ireland). Geographical areas include England, Wales, Ireland and in the United States -- Maryland, Pennsylvania, Illinois, Oklahoma, Montana, and Washington.

Cyril feels that belonging to a genealogy society in the areas he is researching enables him to better understand the area and times in which his ancestors lived. Currently, Cyril is a member of the LaSalle County Genealogy Guild in Ottawa, LaSalle County, Illinois, the Dorsey Family History Society of England, and the Haskell Family History Society.

When asked what he enjoys most about genealogy, Cyril stated, "The Chase -- searching for the unknown, the hidden ancestor. The historical detective work required to do family history research." Cyril enjoys "knowing who my ancestors were -- where they lived - - what they did for a living, and knowing something of my heritage, the heritage that in many ways formed the person I am." Cyril added, "It is one thing to know history in general through books, but to learn about your ancestors, to know where they lived, gives history a more personal relevance."

Learning more about genealogical research tools and methods, and to assist others and be helped by other family history researchers in turn, keeps Cyril actively involved. [ctaylor@linknet.kitsap.lib.wa.us](mailto:ctaylor@linknet.kitsap.lib.wa.us)



## Correspondence Secretary

Thelma Audrey (Fuller) Gurske

While this is the first Executive Board position Thelma has held with PSGS, she has been active in Daughters of the American Revolution (DAR) for over ten years. As a member of DAR, she has been Chapter Treasurer, Registrar, Regent, Corporation Treasurer, and State Recording Secretary. As a member of the Kitsap Retired Teacher's Association

for fifteen years, Thelma spent a year as President, and during her 25 years with Alpha Delta Kappa Honorary Teachers Sorority, she held positions as Treasurer and as Recording Secretary. Thelma is retired from the Bremerton School District where she taught elementary school.

Married to Stanley Eugene "Gene" Gurske, Thelma has been researching his family tree for ten years. Thelma says she is "learning all there is about my husband's family so that [she] can put it in story form." Thelma has been trying to find her husband's grandfather who married Selma Peterson or Carlson, age 23, in Spokane in 1895.

Thelma's sister, June (Fuller) Smith, is also active in PSGS and DAR and has been researching the family line. Thelma is thankful her sister has accomplished so much with it.

Thelma enjoys PSGS and thinks the members are interesting because they are interested in their ancestral roots. Thelma says she is "always disappointed when [she] encounters people not curious or interested in knowing about their ancestors."

As Correspondence Secretary, Thelma is looking forward to the mail, researching any queries that come in, writing letters, and reporting back to the club. She hopes to learn more about the PSGS Library. [tgurske@juno.com](mailto:tgurske@juno.com)

No photo available

## Recording Secretary

Margot Jeanette (Nason) Delgado

Margot is Recording Secretary for a second term. Margot started in genealogy five years ago when she began researching her own family tree. She thinks of genealogy as a hobby -- a fun one! "I have found it so interesting retracing my ancestors steps. It has made me appreciate history more because so much of it

I've read [and then] I've found that my family had participated in certain events. I only started because bits and pieces had been done by family members and after inheriting what they had done, I began trying to put everything together. Now it has snowballed and I'm having so much fun...it's like putting a large puzzle together."

Margot joined PSGS two years ago and enjoys learning the how to's of genealogy. "Now I just need to find more time," she said. As Recording Secretary, Margot's main function is to take and read the minutes of all meetings. Her goal for 1998 is to try to be heard better and get all the information recorded correctly. If someone has a question, Margot will be there to answer the question or point them in the right direction.

Using Family Tree Maker, Margot is researching Nason, Paepke, Chauvet, Winterscheid, and Nash in Maine, new Hampshire, Massachusetts, Illinois, England, and Germany.

Margot is married to Frank Araiza Delgado, has three children; Alejandro, Susanne, and Aimee, and works full time at Little Darlin's Daycare.

*Each year in August, the Nominations Committee with the Immediate Past President as Chairman, pulls together names of qualified volunteers with a desire to serve as a PSGS Officer. If you would like to be considered for one or more of the positions, please contact Bill Richardson at 377-5881 before the August 1998 meeting.*



**Newspaper Holdings  
of the  
Kitsap County Regional Library, Central Branch**

Town	Title	Issues
Bremerton	American, The	1924 & 5/25-12/25
Bainbridge	Bainbridge Bulletin	Jan 26, 1933
Bainbridge	Bainbridge Island Beacon (Winslow)	Jan 6, 1922
Bainbridge	Bainbridge Island Bulletin	1/22/30-6/4/30
Bainbridge	Bainbridge Island Community Club Bulletin	11/20/29-1/15/30
Bainbridge	Bainbridge Island Gazette	2/8/12-3/28/12
Bainbridge	Bainbridge Island Review	2/20/30-2/23/45
Bainbridge	Bainbridge Islander	1/28/21-7/5/34
Bainbridge	Bainbridge Review	1/4/34-12/31/95
Bainbridge	Bainbridge Review	1/1/96-to present
Bainbridge	Bainbridge Review	3/23/28-12/31/31
Bremerton	Bremerton Axe	11/30/27
Bremerton	Bremerton Democrat	6/29/33
Bremerton	Bremerton Evening Searchlight	5/1920-8/1922
Bremerton	Bremerton Labor Journal	5/17/34-3/28/35
Bremerton	Bremerton News	6/1901-3/1922
Bremerton	Bremerton News Searchlight	8/1922-4/1945
Bremerton	Bremerton Press	2/5/29
Bremerton	Bremerton Progress	6/1990-1992
Bremerton	Bremerton Searchlight	8/1904-5/1912
Bremerton	Bremerton Searchlight	7/1919-4/1920
Bremerton	Bremerton Sun	7/1935-6/1984
Silverdale	Central County Press	11/1981-12/1984
Central Kitsap	Central Kitsap Journal	1972-1974
Silverdale	Central Kitsap Reporter	6/1984-12/1989
Central Kitsap	Central Kitsap Style (See Community Style)	1/6/93-3/95
Charleston	Charleston Citizen	12/4/26
Charleston	Charleston Record	7/9/10-3/2/21
Bremerton	Civil Service Crab (sic)	5/16/19-3/2/21
Winslow	Colony	6/23/33
Central Kitsap	Community Style (See Central Kitsap Style)	5/92-12/93
Winslow	Eagle Harbor Pilot	11/1912
Bremerton	East Bremerton Fog-Horn	Nov.18-23, 1920
Poulsbo	Herald (See Kitsap County Herald)	1990-to present
Bainbridge	Island Sportsline	2/15/84-5/23/84
Keyport	Keynotes	9/1990-1993
Keyport	Keynotes	2/12/65-10/7/83
	Kitsap American	Jan-March 1925
Silverdale	Kitsap County Chronicle	10/22/81-11/5/81
	Kitsap County Community Builder	5/14/31-5/5/32
	Kitsap County Herald	3/1901-12/1995
	Kitsap County News	4/47-4/56



# Kitsap County Newspapers

by Cyril Taylor

There are many occasions when the family historian must resort to old newspapers in their search for information. The following list of newspaper holdings of the Sylvan Way branch of the Kitsap Regional Library is presented as a tool to aid the researcher in their quest for the past. The volume and variety of material offered by the Kitsap Regional Library is probably greater than any of us imagined. It would appear that there is a treasure-trove for the avid Kitsap County family historian.

The information was gleaned from material provided by Kitsap Regional Library staff. Some clarity may have been lost in the

abstracting process. Many items were included on the list even though their value to the researcher seemed remote.

The compilation is mainly meant to provide the researcher with the scope of material available. Always check with the reference desk as it is likely that the material available may vary from the listing. The greater part of the material is in storage or placed in locked cabinets. The reference librarian will unlock the cabinets and assist you in locating the periodical you wish to search.

It is hoped that many of you will take advantage of this extremely valuable resource that is so readily accessible.

	Kitsap County News	6/11/53-9/10/53
	Kitsap County News	1949-4/1956
	Kitsap County Review	6/1903-7/1904
	Kitsap Journal	1/1975-5/1982
Bremerton	Kitsap News	7/1945-4/1947
Bremerton	Kitsap News	11/22/45
Charleston	Kitsap Record	10/30/25-12/11/25
Wing Point	Lagoon Club	9/3/1916
Manette	Manette News	11/44-12/48
Bremerton	Navy Yard Bremerton	5/26/32
New York City	New York Times	1/1971-9/16/1995
	North Kitsap Herald	3/1901-12/1989
	North Kitsap News	1959-1962
Bremerton	Northwest Craftsman	10/9/53
	Periscope (Naval Training Camp)	7/19/18-2/18/19
Port Orchard	Port Orchard Independent	9/1900-12/1995
Port Orchard	Port Orchard Independent	1/1996-to present
Poulsbo	Poulsbo Record	2/10/22
Silverdale	Press (Same as Kitsap County Herald)	9/83-1985
Silverdale	Press (Same as Kitsap County Herald)	1/85-2/88
Bainbridge	Review	1991-to present
	Salute (PSNS)	9/14/51-9/21/51
	Salute (PSNS)	1941-1959, 1991-199?
Bremerton	Ships Log	10/15/43-11/2/45
Silverdale	Silverdale Breeze	12/47-4/49
Silverdale	Silverdale Breeze	1949-1966
Silverdale	Silverdale Press	1986-1987
Silverdale	Silverdale Reporter (Same as Central Kitsap)	1967-1969
Silverdale	Silverdale Reporter (Same as Central Kitsap)	1990-5/92
Silverdale	Silverdale Reporter (Same as Central Kitsap)	6/1984-12/1989
Silverdale	Silverdale Reporter (Same as Central Kitsap)	1987
Bremerton	Sun (Same as Bremerton Sun)	June 1984-to present
Bremerton	Sun (Same as Bremerton Sun)	7/1935-6/1984
Vashon	Vashon-Maury Island Beachcomber	10/81-4/82
Keyport	Warhead	5/1/42-12/45



# Exchange Notes

by Pat Eder

Amer AGLL "Genealogy Bulletin" Issue 40 (Jul/Aug '97): locating the home of your Colonial British immigrant; book reviews, queries.

Amer Ancestry 15:4 (Jul/Aug '97): Northeast region of National Archives in N.Y.C.-an overview of it's extensive holdings; Italian civil vital records; Germany's National Archives; early medical terminology; anatomy of a surname; U.S. Gen WEB project.

Ibid. 15:5 (Sep/Oct '97): types of photographs 1854-1900; Hispanic research; African American research; abstracting documents; tracing a house history.

Amer Ellen Payne Odom Genealogy Library "Family Tree" 7:4 (Aug/Sep '97): repository for Scottish research; clan updates; reunion info; queries; immigrants and U.S. passport applications; finding that elusive So Carolina marriage record.

Amer Everton's Genealogical Helper 51:5 (Sep/Oct '97): identifying family photos; English immigrants-an 1877 article about the difficulties of the trip to the US; 1997 directory of professional genealogy researchers; regular features of queries, new book reviews, missing ancestors, CD ROM info and computerized roots cellar.

Amer Heritage Quest #70 (Jul/Aug '97): Colonial ailments and cures; keep memories alive with an oral history; Rev. War claims; new and little known sources; German, Scandinavian, Welsh, British research; surnames-determining their origins; old South research; 1870 census Peshtigo, WI, ongoing; midwest research.

Ibid. #71 (Sep/Oct '97): U.S.

passport applications; writing your family history-finding a different angle; WWI draft registrations; German, Irish, British, Scand. Q & A; European and Eastern European sources; 1870 Peshtigo, WI, ongoing.

Amer National Genealogical Society "Newsletter" 23:5 (Sep/Oct '97): Seminole Indian research; British Isles IGI research; software reviews of PAF 3.0, Family Tree Maker 4.0, The Master Genealogist and Family Tree Maker for Mac computer; US Gen WEB info; Genealogy projects registry, a database of ongoing genealogical projects worldwide.

Amer New England Historic Genealogical Society (NEHGS) "Nexus" 14:5 (Sep/Oct '97): matrilineal studies; New Englanders in the West Indies; Lady Catherine Gordon-her Scottish ancestors, American kin and European descendants.

CA Sequoia G.S. "Newsletter" 24:7 (Sep '97): Tulare CO and city directories at Tulare Public Library; how to obtain Tulare CO vital records; Tulare CO Historical & Genealogical organizations; Cherokee Strip Land Run 1893 FOUST to HEGLER.

Ibid. 24:8 (Oct '97): WWI registrations BOARD to BRIANS; Cherokee Strip Land Run 1893 HEIN to HOOVEN.

IN-IL-KY TriState GS "TriState Packet" 21:4 (Sep '97): PLANE family; Zeimer Funeral Home records 1928-38; basic genealogy; records of Zoar school Cass Twp, Dubois CO, IN; Deaconess school of Nursing 1896-1943.

IL Clay CO GS "Clay Roots"

(Fall '97): 1850 Clay CO census-heads of families who were native Kentuckians; local news items 1933, 1924; Clay CO rural mail route customers; DAVIS-TOLIVER history; BATTENFIELD saga; Flora, IL marriages 1878-80; Shouse Chapel history; ETCHASON pedigree; ANSPACH history.

IL LaSalle CO G. Guild "The Genie View" (Sep/Oct '97): county histories for finding ancestors; synopsis of LaSalle CO.

IL Peoria CO GS "Prairie Roots" 24:4 (Sum '97): Peoria newspapers news items 1866; Peoria in 1875 as told by a resident in 1905; Peoria midwife records Dec 1888 to Jan 1903; recent visitors to Peoria Public Library and surnames they are researching.

IA Boone CO GS "Newsletter" 15:2 (June '97): EDWARDS group sheet.

IA Jackson CO GS Genie News 18:3 (Sep '97): how Tete Des Morts Twp. got it's name; obits of U.S. military men in WWII.

KS Crawford CO GS "The Seeker" 27:3 (Fall '97): Crawford CO births 1895 ALLEN to HAVILAND; probates MARTIN to MAWSON; obits of persons born prior to 1900.

MD Frederick CO GS "Newsletter" (Oct '97): 1897 Frederick CO post offices and people receiving mail; FICK family; newspaper abstracts 1902 and 1907.

MA "Berkshire Genealogist" 18:3 SWEET family ancestor tables of SMITH, ANDREWS, BROCK, MEEKER, GALE, CLARK; 1876 map of Richmond, MA and names of inhabitants; State census of LEE, MA



1855; WALKER diary of Lenox, MA; TREMAIN'S of Berkshire CO; census of New Ashford, MA 1790-1920 GIRARD to JORDON.

MA Falmouth GS "Newsletter" 9:5 (Sep/Oct '97): English research; Phila. PA research; research sites on Cape Cod, MA.

MN Otter Tail CO GS "Newsletter" 15:3 (Sep '97): Buse Twp and an Indian massacre; Eli DEWEY bio; Buse Twp landowners of 1884; Buse Twp 1880 census-surnames of heads of families; Otter Tail naturalizations 1905.

MT Dawson CO GS "The Tree Branch" 17:2 (Aug '97): SMITH-HUESTIS pedigree.

MT Flathead Valley GS "Tree Trails" 22:3 (Sep '97): Flathead CO grantor index 1884-97 ongoing; cemetery records update.

MO Scotland CO GS 11:4 (Oct '97): DRISCOLL notes; items from Memphis, MO newspapers various years; school students 1915 Scotland CO; 1995 obits from Memphis Democrat; surnames that members are researching.

NH Rockingham Society of Genealogists "Kinship Kronicle" 20:3 (Sep '97): records of owners and stones in Stratham NH cemetery.

NM New Mexico Genealogist 36:3 (Sep '97): New Mexico in the Civil War; 1890 special census (survivors and widows of Civil War in Dona Ana CO; marriage licenses 1909-12 Luna CO; San Miguel CO cemeteries.

OH Tuscarawas CO GS "Pioneer Footprints" 25:3 (Aug '97): index to Chancery Record 2 MILLER to YANDT; WEST reunion 1906; BAAB reunion 1904; events of 1926 noted in Dennison, OH newspapers.

OR Genealogical Forum of Oregon "The Forum Insider" 8:2 (Aug '97): Calendar of events in Oregon.

Ibid. "Bulletin" 47:1 (Sep '97): Mt. Tabor residents (taken from Portland City Directory 1890); bible records of LISTON; GRIEG; WILSON; some emigrants to Oregon 1848; Oregon City men signing a petition against claim jumping; Oregon events, book reviews; new library books.

OR Willamette Valley GS "Beaver Briefs" 29:3 (Sum '97): STOUT history and diary; 1912 Marion CO, OR death index ADAMS to ZUMWALT.

PA Lycoming CO GS "Lycoming Lyneage" 14:5 (Oct '97): PA German naming customs; National cemeteries where Civil War soldiers are interred; STUGARD and YEAGER bibles; PA Quaker records; Robert Morris history.

PA Mercer CO GS "Past Times" (Sep '97): news items from Mercer CO newspapers 1897; MEANS group sheet; Mercer CO militia 1862.

Ibid. "Past Times" (Oct '97): Mercer CO marriages BETZ to BILLEN; CHAMBERS pedigree; Mercer CO militia list 1862.

SD Lyman Brule GS 1997: Czech research addresses; local newspaper extractions 1906 and forward; Lyman CO births 1905-14; Lyman CO births, deaths and marriages from local newspapers 1905-14; Brule CO maps; SUMMY, FELTMAN and WILLIAMS pedigrees.

SD Sioux Valley GS "Pathfinder and Index" 23:4 (Oct '97): 20 tips to avoid grief in your research; obits of local people born before 1900; Pathfinder surname index for 1997.

WA Grant CO GS "Big Bend Register" 17:3 (Sep '97): 1910 census Grant CO; NORTHROP letters; records of Wilber Community Church and Sherman Presbyterian Church 1938-1940; Polk Directory of Grant CO 1914.

WA Grays Harbor GS "Family Tree Searcher" 8:5 (Sep/Oct '97): narrative of a 1935 trip to Grand Coulee Dam; local newspaper items.

WA Jefferson CO GS "Newsletter" 13:3 (Fall '97): BUTCHER family; news items 1889, 1893; members' surname lists.

WA So King CO GS "So King CO News" 12:7 (Sep/Oct '97): abbreviations encountered in genie research.

WA WA State GS "Newsletter" 13:2/3 (Mar/Apr and May/June '97): using the Suzzalo Library at U of WA in Seattle.

Ibid. WA State GS 1997 membership booklet.

WA Tacoma-Pierce CO GS "The Researcher" 29:1 (Fall '97): probate abstracts of Pierce CO, WA territory; Tacoma public school census 1909 of Oakland and Roosevelt schools; accessing vital records; news items from Tacoma papers 1886; Klondike Gold Rush; Tacoma Public library new genealogical additions.

WA Wenatchee Area GS "Appleland Bulletin" 25:3 (Sep '97): 18th century German naming customs; GARNEY-BAETHKE ahnentafel; 1993 update Wenatchee City Cemetery, ongoing.

WA Yakima Valley GS 29:3 (Sep '97): Yakima CO land titles; US Army 9th division (this page was omitted from 1994 bulletin); COULSON-BROWN records; Janeck Drug Store account book ongoing; Ellensburg news items 1890; Kittitas CO school records 1901; library acquisitions; BONAOWITZ ahnentafel.

WV Kanawha Valley GS "The Journal" 21:3 (Fall '97): MOORE, GIBSON, HAMMOND, BEAM pedigrees; Cline and Jackson cemeteries; 1833-1852 marriage notices in Kanawha newspapers; GOSHORN records.



# 1997 family Backtracking Index

39	Aarness, Mrs. Clifford	49	Griffin, Linnie
39	Abernathy, Joyce	49	Gurske, Stanley Eugene
48	Adams, Patricia Ellen	2, 14, 30, 42	Gurske, Thelma Audrey (Fuller)
39	Anderson, Florence	9	Guy, Ralene
39	Anderson, Virginia	26	Hallda, Ed
35	Andrew, Lydia McLaughlin	42	Hamilton, Susan Purdy
35	Andrew, William	48	Harden, Larry
46	Andrews, Eva	16, 42	Harden, Lawrence Edwin
26	Ashcraft, Karen Ross	39	Harrah, JoJean
46	Atkinson, G. H.	26	Harson, Minnie
46	Badertscher, Victor	39	Hartley, Margaret A.
43	Baillie, Frank	39, 43	Helander, Richard
35, 39, 42	Baker, Cyndy	39	Herlein, Clarice
32	Baker, Cynthia	39	Herlein, Ron
44	Bamman, Gale Williams	46	Hester, Mark
21	Barnett, Shari	26	Hinkleman, Thomas
39	Baxter, Fern	29	Hock/Hogue, Sophia
26	Beahm, Doris	46	Hodgkinson, Virginia
26	Bean/Biehn, Henry H.	7, 9, 13, 21, 45	Hopkins, Rinear
26	Bean/Biehn, Manassah G.	27	Howells, Cyndi
27	Bockelie, Nancy L.	27	Hurley, Patrick Joseph
17	Borstad, Catherine A.	26	Hurley, Paula
39, 43	Brennan, Lori	46	Jackson, Lorraine
46	Brightman, Ida F.	46	Jones, Alice Rowena
39	Bruce, Donna Jean	46	Jones, Alonzo Newton
39	Bryant, Myrna	46	Jones, Eliza Ann
26	Buell, Avis	46	Jones, Job Thomas
16, 32, 42	Carter, Nancy	46	Jones, Martha
30, 31, 42	Cataldo, Madi	46	Jones, Mary (Jones)
26	Catlin, Thomas	46	Jones, Oliver Edwards
39	Christner, Marlene	46	Jones, Rachel Mae
35	Coggins, April E.	46	Jones, Sara Jone
2, 14, 16, 30, 32, 42	Cook, Cereice	46	Jones, Thomas
30	Covey, Stephen	48	Jones, William
39	Crippen, Maxine	27	Kendrick, Randall
39	Cunningham, Jeffrey	2, 14, 16, 30, 32, 42	Kerdus, Mary B.
46	Cunningham, Peggy	26	Kniert, Lorraine
39, 42, 43	Dailey, Mrs. Jerry	43	Knights, Thomas Frederick
33	David, Catherine Gallagher	32, 42	Koentz, Bernard
14	Degaldo, Margo	42	Koentz, Geraldine
26	Del Rossi, David	32, 42	Koentz, Gerry
26	Del Rossi, Gabriele	27, 43	Koentz, Wes
49	Delgado, Aimee	27	Larson, Ole
49	Delgado, Alejandro	27	Lee, Charles L.
49	Delgado, Frank Araiza	27	Lee, Loami
2, 30, 42, 49	Delgado, Margot Jeanette	27	Lee, Lucia B.
49	(Nason)	39	Lee, Owen L.
2, 14, 16, 25, 30, 42, 43	Delgado, Susanne	7	Lentz, Mrs. John
16, 42	Eder, Pat	7	Leverich, Brian
33, 34	Enos, Dianne	26	Lewis, Linda
7	Farmer, Mary	27	Lewis, Sandy
21	Fisher, Joy	48	Loomis, Laura
2, 3, 9	Ford, Cindy	29	Lorentson, Sonja Elizabeth
39	Frasier, Teri	11, 13, 15, 29, 30, 32, 39, 42	Luks, Allan
26	Gee, Addie	2, 5, 14, 16, 47	MacDonald, Andi
7, 13	Gish/Gisch, Christian	29	MacDonald, Andrea
26	Gormley, Myra Vanderpool	30, 31, 39	MacLeod, Flora
39	Gosman, Henry Franklin	39	Marrs, Marlys
31, 42	Green, Beverly	44	Martell, Dorothy



15, 17	Matthews, Michael	26	Schweyen, Stephen G.
21	McClerkan, Carolyn	26	Serio, Giovanni
39	McCormick, Ida Skarson	46	Serio, Loretta
7	McGee, Dorothy	46	Shinabarger, Maryan (Packard)
7	McGhee, Barry	35	Shinabarger, Patrice
2, 14, 30	McNamara, Billie R.	49	Smith, Della
3, 31, 32, 42	Menees, Margorie	39	Smith, June (Fuller)
39, 42	Menees, Marj	2, 11, 14, 15, 16, 30, 31, 32, 39,	Smith, Neva
35, 43	Mettling, Terry	42	Spore, Cindy
35	Metzer, Ethel	26	Staggs, Caroline
39, 42	Metzer, Harry	26	Staggs, Jennie
43	Miller, Lisa	26	Staggs, Maude
39	Mills, Gary B.	26	Staggs, William
39	Minert, Maxine	46	Stetson, Geo.
26	Mitchell, Roseann	39	Stevenson, Jan
39	Monhollan, Charles Berry	39	Strube, Ruth
7	Morris, Naomi	32, 42	Swan, Larry
39	Myers, Kim Harris	16, 42	Swedborg, Ida Mae
26	Neumann, Carol	33	Sweeney, Mary Ann
32, 42	Nichols, Nettie	33	Sweeney, Thomas
39	Norton, Madge	46	Szymanski, Anne
46	O'Brien, Rose Mary	21	Tangye, Moira
27	Packard, Irvin Albert	23, 14, 30, 33, 35, 42, 49	Taylor, Cyril T.
23	Pederson, Dorothea	49	Taylor, Lee-Yen
27	Pence, Richard	27	Thorsen, Lars
27	Perrigo, Edith Lillian	39, 43	Tietge, Nadine
35	Perrigo, William E.	26	Tonge, Alice
35	Perry, Commodore S.	26	Tonge, Elizabeth
35	Perry, Commodore Seymore	26	Tonge, Marge
9, 39	Perry, Erwin	27	Turnquist, Gust
35	Perry, Fredi	35	Twiss, Harriet
35	Perry, Sarah E.	27	Vold, Haakon
35	Perry, Sarah Elizabeth	26	Wage, Tara Walmsley
15	Perry, Seymore C.	16, 26, 42	Waldron, Marie
17	Peterson, Nancy	35	Walker, Lori Beth
35	Peterson, Vicki	26	Wallace, Chester C.
26	Pierce, Leona	7	Waller, George
32, 42, 43	Pittman, Lola	2, 11, 14, 30, 31, 42	Ward, Fred
32, 42	Porter, Clara	42	Watson, Doris
7	Porter, Frank	26	Weidmark, Suzanna
43	Powell, Donna	27	Wetherbee, Myrtle
42	Ragan, Robert	33	When/Wynn, Thomas
31	Redfearn, Deb	26	Whisple, Florence Madeline
39	Redfearn, Deb Palmer	26	Wilkes, Frederick
46	Redfearn, Deborah	26	Wilkes, Ida
26	Redwine, Cary	27	Wilkes, Rena
26	Reed, Elizabeth	27	Willis, Clara T.
46	Reed, Warren H.	27	Willis, John I.
46	Reeve, Alanson	33	Woodman, Jerry
46	Reeve, Alice Lily	35	Wortman, Daviel Dewaine
2, 3, 14, 15, 30, 31, 32, 41	Reeve, Grace	35	Wortman, Edna Yale
46	Richardson, Bill	39	Wright, Aloha
39	Richardson, Helen May	34	Wynn, Ann
1, 7	Richardson, Janice	34	Wynn, Catherine
2, 14, 16, 30, 32, 42, 48	Rigdon, John	34	Wynn, James
39	Roark, Lois Lynn (Limbocker)	33	Wynn, John
5, 16	Roberts, Brian	34	Wynn, John W.
32, 39	Rugh, Dave	33, 34	Wynn, Mary Ann
16, 42	Rugh, David	34	Wynn, Michael
6, 7	Ruyle, Nadine	33, 34	Wynn, Thomas
33	Schneider, Dale	34	Wynn, William
26	Schomburg, Dolores	39, 42, 43	Yager, Jean



# Puget Sound Genealogical Society

*Serves Kitsap and north Mason counties*

1026 Sidney Ave., Suite 110, Port Orchard, WA 98366-4298

<http://www.rootsweb.com/~wapsgs/homepage.htm>

## Membership Survey

### 1. Level of Education

- ☐ High School diploma
- ☐ GED
- ☐ 1-2 years college
- ☐ 3-4 years college
- ☐ 5-7 years college
- ☐ Technical school

### 2. Age

- |                                   |                                  |
|-----------------------------------|----------------------------------|
| <input type="checkbox"/> Under 30 | <input type="checkbox"/> 51-55   |
| <input type="checkbox"/> 31-35    | <input type="checkbox"/> 56-60   |
| <input type="checkbox"/> 36-40    | <input type="checkbox"/> 61-65   |
| <input type="checkbox"/> 41-45    | <input type="checkbox"/> 66-70   |
| <input type="checkbox"/> 46-50    | <input type="checkbox"/> Over 70 |

### 3. Income level

- |  |  |
|--|--|
| <input type="checkbox"/> Under 20,000    | <input type="checkbox"/> 40,000 - 50,000 |
| <input type="checkbox"/> 20,000 - 30,000 | <input type="checkbox"/> 50,000 - 60,000 |
| <input type="checkbox"/> 30,000 - 40,000 | <input type="checkbox"/> Over 60,000     |

### 4. Place of residence

- |                                       |  |
|---------------------------------------|--|
| <input type="checkbox"/> Port Orchard | <input type="checkbox"/> Poulsbo           |
| <input type="checkbox"/> Bremerton    | <input type="checkbox"/> Bainbridge Island |
| <input type="checkbox"/> Purdy        | <input type="checkbox"/> Seabeck           |
| <input type="checkbox"/> Silverdale   | <input type="checkbox"/> Other             |

### 5. Do you own your own home

- ☐ Yes ☐ No

### 6. How long have you been a member of PSGS?

\_\_\_\_\_ years \_\_\_\_\_ months

### 7. Do you belong to more than one genealogy society?

- ☐ Yes ☐ No

If yes, please answer questions 7a and 7b.

#### 7a. How long have you belonged to other genealogical societies?

\_\_\_\_\_ years \_\_\_\_\_ months

#### 7b. I have joined other genealogical societies in the geographical areas I am researching.

- ☐ Yes ☐ No

### 8. Are you a member of a one-name society? (A group dedicated to researching a single surname.)

- ☐ Yes ☐ No

If yes, please answer question 8a.

#### 8a. How long have you been a member of a one-name society?

\_\_\_\_\_ years \_\_\_\_\_ months

### 9. Are you a member of a heritage society? (A group dedicated to research of the Cornish; or Swedish; etc)

- ☐ Yes ☐ No

If yes, please answer question 9a.

*Continued on reverse*



**9a. How long have you been a member of a heritage society?**

\_\_\_\_\_ years \_\_\_\_\_ months

**10. I travel to various geographical locations to do my own research.**

☐ Yes ☐ No

**11. I have hired a professional genealogist to do genealogical research.**

☐ Yes ☐ No

**12. I have attended the following training (check all that apply)**

- ☐ PSGS training
- ☐ Other genealogical society training
- ☐ Heritage society training
- ☐ National Conferences/Seminars
- ☐ International Conferences/Seminars
- ☐ Non-accredited college courses
- ☐ Accredited college courses
- ☐ Other formal training

**13. I have written a family history of at least four generations.**

☐ Yes ☐ No

If yes, please answer question 13a.

**13a. I have published a family history of at least four generations.**

☐ Yes ☐ No

**14. I have written a biography.**

☐ Yes ☐ No

If yes, please answer question 14a.

**14a. I have published a biography.**

☐ Yes ☐ No

**15. I enjoy hearing about product updates.**

☐ Yes ☐ No

---

**Thank you for taking the time to complete this survey. Your responses will be compiled and used to develop a media kit for prospective advertisers. At this time, it is unknown when advertising will be accepted for *family Backtracking*. When done, a copy of the media kit will be available at the library on the bulletin board. We will let you know when it's available.**

**Andi MacDonald  
Editor**

Mail your completed surveys to 2984 S.E. Aspen St., Port Orchard, WA 98366 or deliver it to any Executive Board member or to the on-duty librarian Monday or Friday, 10:00 - 4:00.



X

NON-PROFIT ORG  
U.S. POSTAGE  
PAID  
BREMERTON, WASHINGTON  
PERMIT NO. 110

*family Backtracking*  
Puget Sound Genealogical Society  
1026 Sidney Ave, Suite 110  
Port Orchard, WA 98366-4298

# National Genealogical Society Conference in the States

Local Host

Colorado Council of Genealogical Societies

6-9 May 1998

Denver, Colorado



**Explore Your Heritage at the Rocky Mountain Rendezvous**

**The Greatest Four Days  
For Every Researcher**

**Take a Genealogical Vacation with Your Whole Family**

Write for: NGS '98 Conference Registration Brochure, 4527 17th Street North, Arlington, VA 22207-2399  
Tel. (703) 525-0050; Toll Free: (800) 473-0050; Fax (703) 525-0052; E-mail: 76702.2417@compuserve.com.