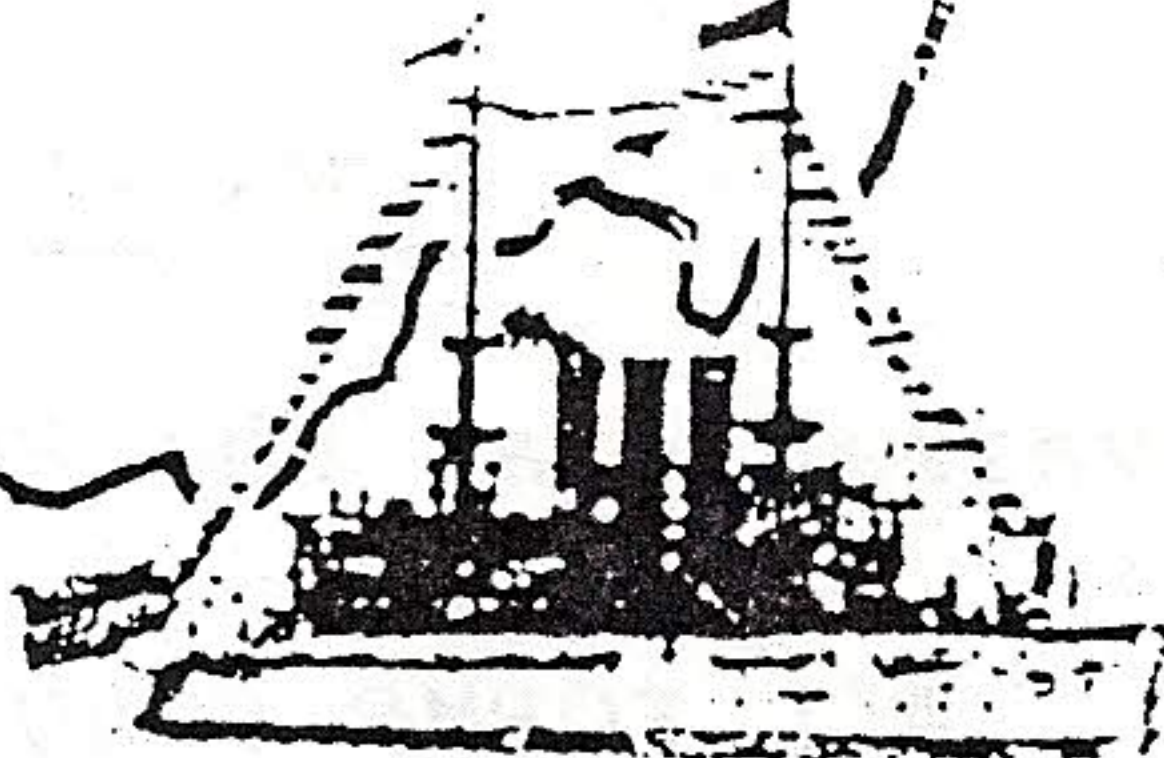
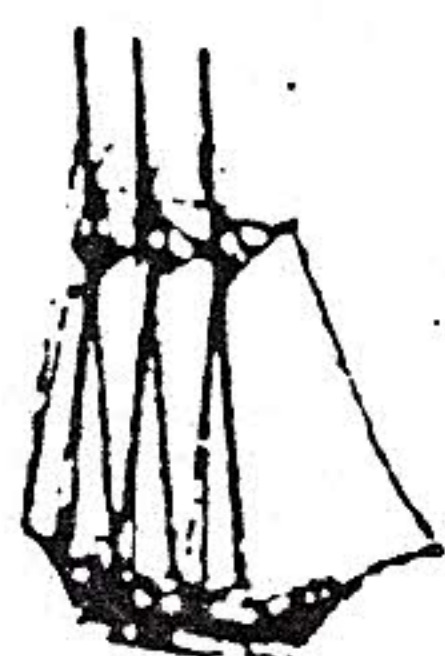
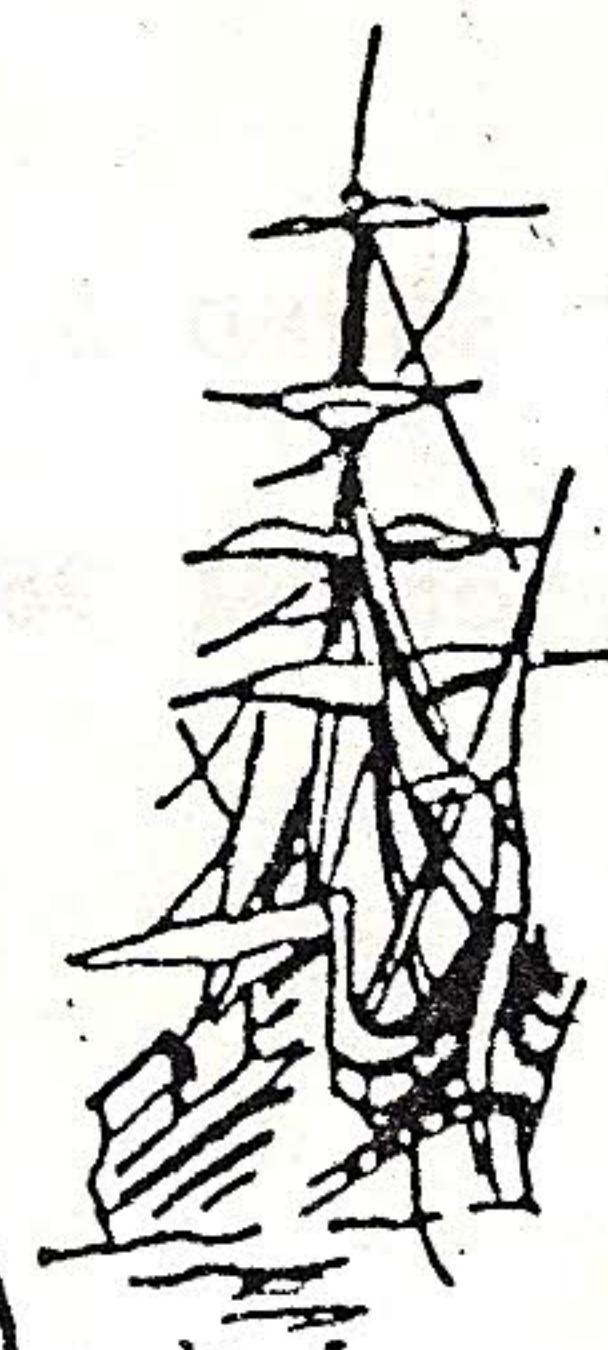


ISSN 0735-682X

Puget Sound  
Genealogical Society

# Family Backtracking★

Volume XVII  
1992  
August





PUGET SOUND GENEALOGICAL SOCIETY  
PO Box 601  
Tracyton WA 98393-0601

Organized 1973  
Dues \$10/year  
or \$12/family

"SERVING KITSAP COUNTY AND WEST PUGET SOUND"

1992 OFFICERS

President	Margaret Wagner	830-5208
1st Vice President	Jan Stevenson	275-2034
2nd Vice President	Betty Cooper	373-4333
Recording Secretary	Cindy Shawley Spore	871-0202
Corresponding Secretary	Dick Helander	479-0131
Treasurer	Bill Richardson	377-5881

BELFAIR CHAPTER

Co-Presidents	Ruby Andrews	871-7066
	Jan Stevenson	275-2034
Secretary/Treasurer	Linnie Griffin	275-3770

COMMITTEES

Educational	Jan Stevenson	275-2034
Membership	Betty Cooper	373-4333
Publicity/Historian	Pat Eder	377-7026
Ways and Means	Linnie Griffin	275-3770
Budget	Bill Richardson	377-5881
Library	Dick Helander	479-0131
Bulletin Editors	Mary Penland	876-1932
	Dick Helander	479-0131
Auditing	Ruth Strube	876-3194
Special Projects	Marlys Marrs	373-6945
	Lou Smart	377-2801
Research/Ancestry	Dick Helander	479-1031
Seminars	Linda Fyfe	698-2895
	Jean Balter	377-7709
Nominations	Dick Helander	479-0131
By-Laws	Pat Foley	377-1002

FOR SALE

The following forms are available at the PSGS Library, 3804 Harbel Drive.

ALL FORMS SOLD AT COST

Ancestor Chart - 4¢	Correspondence Log - 4¢
Family Group Sheets - 4¢	Census Checklist - 4¢
Data Work Sheet - 4¢	Census Worksheets - 4¢
Research Record - 4¢	Family Survey Questionnaire 4¢



FAMILY BACKTRACKING  
A Publication of the Puget Sound Genealogical Society  
P.O. Box 601, Tracyton WA 98393-0601

QUARTERLY

Volume XVII, Number 3

August 1992

PUBLISHED FOUR TIMES A YEAR - FEBRUARY, MAY, AUGUST, NOVEMBER

TABLE OF CONTENTS

Kentucky Land Grant System (A Summary). . . . .	42
New Books in the Library. . . . .	45
Arlene Eakle Books Contained in PSGS Library. . . . .	47
Accessing the Sutro File, George Schweitzer Books in PSGS Library . . .	48
Kitsap County Marriages 1860-1915 (cont.) . . . . .	49
Kitsap County Probates (cont.) . . . . .	53
Bremerton Naval Hospital Records (cont.) . . . . .	57

MEETINGS AND COMING EVENTS

The meetings of the Puget Sound Genealogical Society are held the fourth Tuesday of each month at 7 p.m. Hours at the club library, 3804 Harbel Dr. are the second Thursday 1 to 9 p.m. Microfilms and fiche are at 3037 Rocky Point Rd. Belfair Chapter meets first Tuesday of each month at the Belfair Library.

September	1	Belfair Meeting
	24	PSGS Meeting: A Victorian Fashion Show, Belfair (see page 43)
October	6	Belfair Meeting: Trip to National Archives, Sand Point
	27	PSGS Meeting: Canadian Research, 7 p.m. at Clearbrook Retirement Center, 12295 NW Schold Place, Silverdale
November	3	Belfair Meeting: Book Reports
	24	PSGS Meeting: Show and Tell, 7 p.m. at Clearbrook Center
December	1	Belfair Christmas Party
	???	PSGS Christmas Meeting (Date and place to be determined)

WANTED ... GENEALOGICAL SOCIETY EXCHANGE INFORMATION

We need your help! To make the most effective use of our exchanges with other clubs, we need to know what areas you are most interested in researching. Please take a minute (or two) and fill in the questionnaire below with your three choices and mail it to Dick Helander, c/o PSGS, P. O. Box 601, Tracyton, WA 98393-0601. I will tabulate the results in the next issue.

1.	State	<input type="text"/>
	County	<input type="text"/>
	City	<input type="text"/>
2.	State	<input type="text"/>
	County	<input type="text"/>
	City	<input type="text"/>
3.	State	<input type="text"/>
	County	<input type="text"/>
	City	<input type="text"/>
Sign <input style="width: 150px;" type="text"/>		



## KENTUCKY LAND GRANT SYSTEM (A Summary)

Complete records for the KY Land Grant System are available, dating from 1763 on.

The First Grants: In 1763 a royal proclamation promised land to veterans of the French and Indian War. Kentucky at this time was part of Virginia. See "A Calendar of the Warrants for Land in KY Granted for Service in the French and Indian War" by Philip Fall Taylor, published by Genealogical Publishing Co. of Baltimore (1967).

After the Revolutionary War: VA continued and expanded this system. KY reaffirmed the system after separating from VA in 1796.

A knowlege of when an ancestor might have applied is helpful. The records are divided into the following series:

Virginia Series. For grants issued before June 1792, search "VA Land Grant Series". These records are in Frankfort at the Land Office.

Old Kentucky Series. After 1792, consult "Index to KY Land Grants" for patent number (usually in the margin of the grant). If there is no number, see "Index for Old KY Surveys and Grants". (It's a good idea to check the last source even if a number is given. This may provide more info on accuracy of names or complete listing of names.)

South of the Green River Series. Established in 1795. Includes 16,600 patents, including some not in the Green River area.

Warrants for Headrights. A group of 55 patents not filed in any other series.

Tellico Series. Land purchased from the Cherokees in 1805; set up for patents in 1810.

KY Land Warrant Series. 1815. Combined all three of the above. Also includes warrants issued to poor widows under Act of 1820.

West of Tennessee River Military Claims. Land ceded by the Chickasaws in 1818. Numerous Rev. War vets lived here, so many military claims.

West of TN River Series (non-military). 1820. Remainder of the land not granted to ex-military.

South of Walker Line Series. These are really lands in Tennessee; 4,327 grants. Corrected a surveying error.

County Court Order Series. 1835. Contains over 70,000 land patents.

Definition of Terms: Land patenting consists of four steps:

1. Warrant (or Certificate or Order). Authorizes a survey to be made.
2. Entry. Intention to file for a patent. The surveyor put the name in his book and type of warrant to be granted. These entries were not binding and were often withdrawn.
3. Survey. Describes actual land to be assigned to the individual.
4. Grant. Gives the name of the recipient and other assignees, if any; type of warrant, metes and bounds description, date, governor's signature.

Follow step by step. Study Warrant first, Entry (if available), Survey and Plat, and then the Grant.

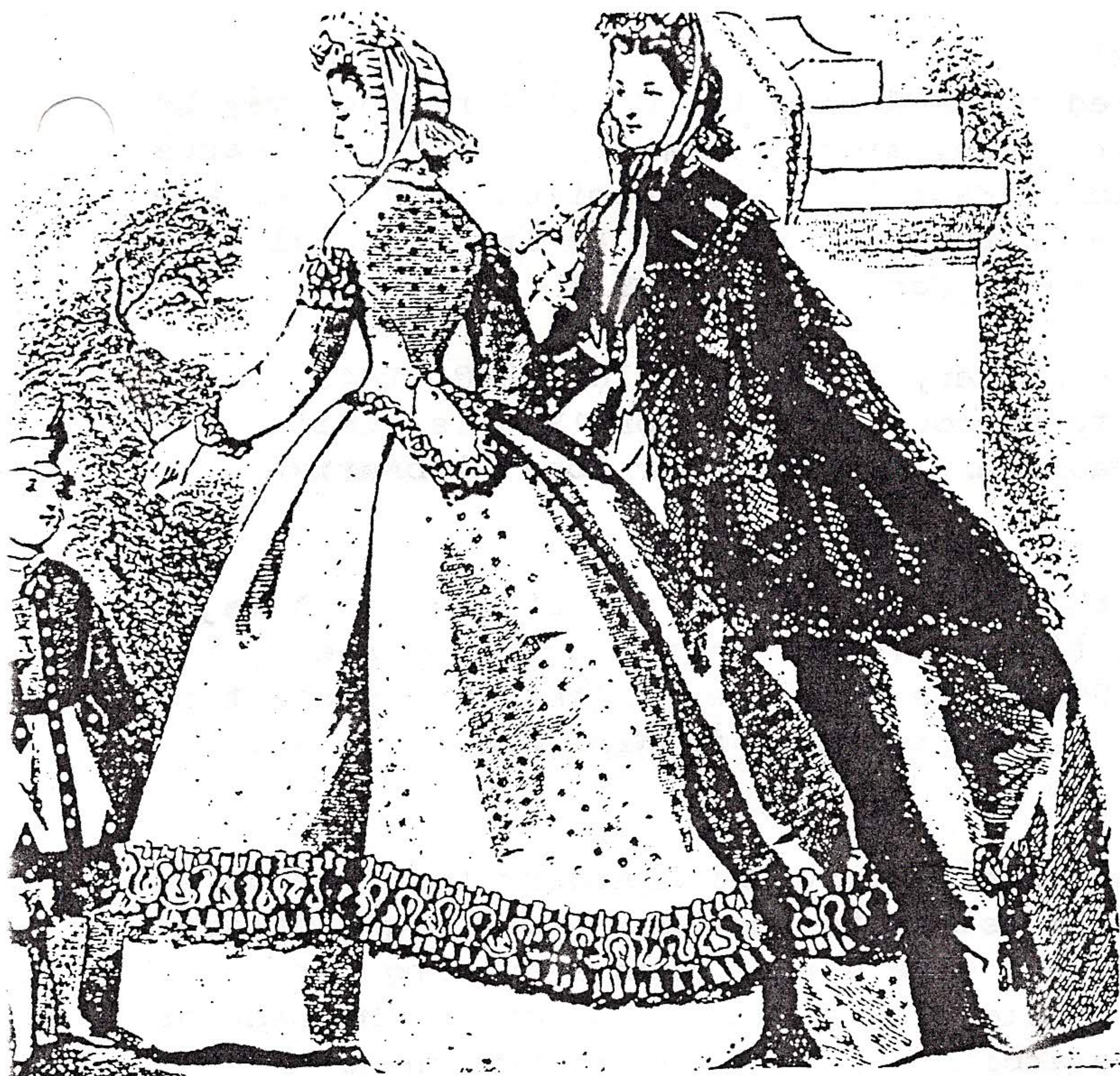
The KY Historical Society holds many of these records, but the Secretary of State has the originals. Contact Land Office, Secretary of State, Capitol Building, Frankfort KY 40601-3493. Telephone 502-564-3490.

(From Saddlebag Notes, published by Historical Confed. of KY May/June 1990)

###

YOU DUB. A Certificate Program in Genealogy and Family History will be offered by the University of Washington in the fall of 1992. The three-course program provides training in genealogy and genealogical research techniques within the context of social, community and family history. Contact John G.N. Rushbrook, UW Extension, GH-21, 2001-25th Ave. NE, Seattle WA 98195. Telephone 206-543-2300, extension 411.





## THE TAMMS MID-VICTORIAN FASHION SHOW

An amusing, instructive look at our Victorian ancestors--the clothes they wore, living conditions at that time, and the history of the period.

Thursday, September 24, 6:30 p.m.

Belfair Community Baptist Church  
(in the center of Belfair, on your left when coming from Bremerton, going toward Shelton on Highway 3; next to the Chinese restaurant)

Ms Tamms is an actress-historian and artist's model. She has gathered the costumes personally, and gives a lively, interesting commentary on them. The clothes range in the period from the mid-1850's to early 1860s.

\$5 donation at the door

## FAMILY BACKTRACKING INDEX

Thanks to our PSGS member, Thelma Gurske, we have a name index for Volumes I through XVI. This index consists of 25,853 names. It has been transferred to dBASE and consists of three files; A-G, H-N, and O-Z. The index can be accessed at the library or by calling Dick Helander, 479-0131.

HELP NEEDED. Precision Indexing is looking for volunteers with IMB compatible computers with hard disk and 35mm microfilm reader to assist in central PA 1870 census or a directory of ships entering NY harbor between 1820 and 1897. They may specify nationalities, ports and years for the passenger list project. Write Dawn Rosenhilde, PO Box 303, Bountiful UT 84011-0303 for information.

SOUTH DAKOTA TOMBSTONES. Inscriptions on tombstones, especially counties in the southern part of the state, are on microfilm and available from SD Historical Archives, 800 Governor's Dr., Pierre SD 57501.

PRE-CIVIL WAR RECORDS FOUND. Records for Sumner County TN were recently found stored. A total of 256 boxes containing pre-Civil War records dating back to 1742. The records are being cataloged, indexed and will available from that county.

WORLD WAR I DRAFT. The Archives at East Point GA have over 24,000 registrations filed for males between the ages of 18-45. A fee of \$5 is required. Send name, town, county, state to Archives Branch, Federal Records Center, 1557 St. Joseph Ave., East Point GA 30044. (Paradise CA, April 1992)

EUROPEAN CENSUS YEARS. The first censuses began in the following European countries:

Austria - 1815	Prussia - 1810
Bavaria - 1818	Russia - 1897
France - 1801	Saxony - 1815
Great Britain - 1851	Spain - 1789
Greece - 1836	Sweden - 1749
Norway - 1815	Switzerland - 1860

(Gen. Forum OR, May 1992)



The following from Gen. Forum, Portland OR)

GEORGIA SALT BOOKS. If your ancestors lived in GA during the Civil war, they may be listed in the Salt Books at the GA state archives, microfilm #73/4. Salt was scarce "in them days" and was often used for barter. Families were supplied with a certain amount, but soon the state had to intervene in the distribution to insure equal access to salt and prevent irregularities. (Gen. Form OR May 1992)

WISCONSIN STATE CENSUSES. Available on interlibrary loan for 1836, 1838, 1842, 1846, 1847, 1855, 1875, 1885, 1895. Also a county by county index for 1905 is available. Location: WI State Historical Society at Madison. Contact your local librarian.

From So. King Co. WA newsletter:

MENNONITES IN RUSSIA. Another bonus from the collapse of the Soviet regime: A major discovery of Mennonite records (over 3,000 files, 175,000 pages) covering the Molatchna area from 1804 to 1920. Over 67,000 pages have been filmed. The project is funded by Conrad Grebel college, Mennonite Heritage Center in Winnipeg, and East European Studies at the University of Toronto.

SURNAMES IN SCOTLAND AND IRELAND. Into the 18th century, Highlanders took the surname of their landlord. When moving from one estate to another, a man might change his surname. Men in Scotland often assumed the wife's name upon acquiring her family's land, in accordance with the old Gaelic clan system. Mac or Mc, MacLean or Maclain, McLeod or MacCloud--spellings were arbitrary depending on the census enumerator, clergyman or whoever. Johnson is a patronymic name, while Johnston could derive from John's town, or settlement, or Johnstone could indicate some landmark. MacNeacail could become Nicholson, or MacGill-mhoire becomes Morrison.

Gleaned from elsewhere:

DISTRACTIONS WHILE READING GENEALOGICAL RECORDS. Marthyhope Mispillion Hundred of Kent Co PA really is Marshy Hope in the Forest of Mispillion Hundred. The word Marriage becomes Maryadges in 1656. Interesting given names: Provided, Exercise, Onesiphorous, and Deliverance.

GOLD RUSH FAMILIES. If an ancestor participated in the Alaska Gold Rush, consult Dawson City Museum and Historical Society, PO Box 303, Dawson City, Yukon YOB 160.

GERMAN PHONE BOOKS. Barbara MacRann has a complete set of West German phone books and more than half of the East German phone books. For \$5 she will search major cities and suburbs, plus any specific small towns for a single surname. Additional work is \$10 per hour. Write her at 3280 Pierremont Rd., Reno NV 89503-1935. She will provide addresses and telephone numbers if wanted.

INDIANA MARRIAGES. The Indiana State Library has a statewide Index to IN Marriages through 1850. With the exception of Clay, Jasper, Madison, Newton, Noble, Starke and part of Sullivan counties. Address 140 N. Senate, Indianapolis IN 46204.

GERMAN SURNAMES. The suffix on a surname can indicate area of origin in Germany:

- bach -- Southwest Germany
- ingen -- Wurttemberg, Baden
- burg -- throughout Germany
- inski -- Upper Silesia
- haus - Westphalia
- reuth - Bavaria
- ecke - Hessen, Thuringia
- ski, zke - East Pomerania



NEW BOOKS IN THE LIBRARY

\*\*Virginia: A Selected Bibliography, by Wendy L Elliott. VA

[A 21 page alphabetized listing of books on History, useful to the Virginia researcher.] Donated by Margaret Wagner.

\*\*Phelps Family News, Vol 5 No. 7, by Dallas Phelps SURNAME-P

[A monthly newsletter from the Phelps Family Association of America, with queries and Phelps genealogical information.]

\*\*Index for The Way It Was in Kitsap Schools, by Thelma Fuller Gurske. WA 17a

[An every-name index of the book.] Donated by Thelma Gurske.

\*\*The Descendants of Solfest & Ingeborg (Brekhus) Langeland, by Harold Langland. This book is a supplement to the original book published in 1972 by Harold Langland. The book is available at the Kitsap County Historical Museum, Washington NW & NW Bryan, Silverdale, WA. Phone: 692-1949.

\*\*Holcombe-Doane-Henke Family History 1812-1983, by Mary Alice Henke FAM 75

[A 161-page genealogy covering the descendants of Aaron Holcombe (1812-1882), James Coggsell Doane (1848-1911), and Carl Wilhelm Henk (1823-1902).] Donated by Lisa J Schureman.

\*\*The Complete Book of Emigrants 1661-1699, by Peter Wilson Coldham IMM 4

[The 2nd of a three-book series, this book lists some 30,000 emigrants who sailed to America from England during 1661-1699. Indexed.]

\*\*Directory of Professional Genealogists, by Eileen Polakoff GUI 39

[A listing of the membership of the Association of Professional Genealogists.]

\*\*Kentucky [Court and Other] Records, by Julia Ardery KY 22

[Early wills and marriages, old bible records and tombstone inscriptions, 206 pp.]

\*\*Old Kentucky Entries and Deeds, by Willard R Jillson KY 21

[Index to all of the earliest land entries, military warrants, deeds and wills, 571 pp.]

\*\*Early Kentucky Landholders, 1787-1811, by James F Sutherland KY 23

[17000 landholders from the annual tax lists for Lincoln Co., 426 pp.]



- \*\*English Duplicates of Lost Virginia Records,  
by Louis des Cognets, Jr. VA 19  
[Transcriptions of English documents relating to 17th and early 18th century Virginians, much of it previously unknown, 380 pp.]
- \*\*Virginia Colonial Abstracts, by Beverly Fleet VA 18  
[Records of birth, marriage, and death, tax lists, court orders, militia lists, wills, deeds, etc. for Colonial Virginia. 3 Vols, 2087 pp.]
- \*\*Scottish-American Wills, 1650-1900,  
by David Dobson SCO 6  
[An index to 2000 Scots who died in America and whose wills were proved in Scotland, 105 pp.]
- \*\*A Guide To German Parish Records, by Johni Cerny GER 20  
[Records in the FHL. Vol 1 contains Baden, Bavaria, and Wuerttemberg, 430 pp.]
- \*\*Index to the Prerogative Wills of Ireland, 1536-1810,  
by Sir Arthur Vicars IRE 12  
[Genealogical abstracts [done in 1897] of all of the Prerogative Wills of Ireland which were destroyed in 1922, 40000 entries, 512 pp.]
- \*\*Irish Family History, by Marilyn Yurdan GUI 41  
[A thorough, reliable and 'user friendly' guide to researching Irish family history. As well as giving detailed guidance on where to find the relevant archives and how to interpret the various records, the book provides a succinct outline of those aspects of Irish history of most interest to the family historian. 207 pp.]
- \*\*Abstract of North Carolina Wills,  
by J Bryan Grimes NC 12  
[An abstract of every will found in the office of the Secretary of State. 492 pp.]
- \*\*Grier of San Francisco - Builder in the West and His Family - 1878-1988, by William M Grier, Jr. FAM 76  
[A genealogy of William M Grier, Sr (1878-1935, his wife, Elo Lannon Grier, and their children with allied families Patterson, Lannon, Grafmueller, Brownlee, De Rham, Glazebrook and Sears. 320 pp.] Donated by the author.
- \*\*North Carolina Taxpayers, 1679-1790 Vol 2, NC 13  
by Donald E. Ratcliff  
[A collection of tax lists found in the microfilmed tax lists of the North Carolina State Archives and other sources. This volume includes names of some 29,000 taxpayers. 230 pp.]
- \*\*Pennsylvania Land Records, A History and Guide for Research, by Donna Bingham Munger PA 23  
[A research guide to the land records of Pennsylvania, an archive of enormous value to anyone interested in land ownership and settlement. 240 pp.]



BOOKS BY ARLENE EAKLE IN THE PSGS LIBRARY:

AMERICAN MIGRATION PATTERNS  
AMERICAN PROPERTY RECORDS  
ENGLAND IN MAPS  
ENGLISH GENEALOGY, AN APPENDIX  
HOW TO READ ENGLISH DOCUMENTS  
HOW TO RESEARCH "A LITTLE BIT OF INDIAN"  
IMMIGRATION DIGEST #10 (NEW IMMIGRATION SOURCES)  
IMMIGRATION DIGEST #3 (MAJOR IMMIGRATION INDEX)  
IMMIGRATION DIGEST #8 (SCOTS-IRISH, MAPS)  
KENTUCKY EARLY SETTLERS AND STATIONS, VOL 1  
KENTUCKY MARRIAGES 1774 - 1799, VOL 2  
PHOTOGRAPH ANALYSIS  
SCOTCH-IRISH SOURCES FOR RESEARCH  
SOLVING AMERICAN PEDIGREE, AMERICAN PROPERTY RECORDS AND LAND AND  
TAX RECORDS (Marlys Marrs' library)  
TAX RECORD: A COMMON SOURCE WITH AN UNCOMMON VALUE (Hanging File)  
THE FOREIGN PEDIGREE (Marlys Marrs' library)  
VIRGINIA I (12 COUNTIES LAND TRACTS)  
VIRGINIA II (MIGRATIONS, LAND COMPANIES)  
VIRGINIA III (COMMONWEALTH, MARRIAGES)  
VIRGINIA IV (CHURCHES, NAMES, MAPS)  
VIRGINIA V (COURT RECORDS, WEST AUGUSTA)  
WERE YOUR ANCESTORS FRONT PAGE NEWS?

Arlene H Eakle and Johni Cerny:

GUIDE TO RESEARCH

THE SOURCE - A GUIDEBOOK OF AMERICAN GENEALOGY

Arlene H Eakle, Arvilla Outsen & Richard S Tompson:

AIDS TO THE MICROFILM MANUSCRIPT COLLECTION OF THE GENEALOGICAL  
SOCIETY OF UTAH, NEW YORK COLLECTION

Arlene H Eakle & L Ray Gunn

AIDS TO THE MICROFILM MANUSCRIPT COLLECTION OF THE GENEALOGICAL  
SOCIETY OF UTAH, ENGLISH COLLECTION

Stolen from So King Co Newsletter who stole it from Mike Mailway in Seattle P-I:

Chang is the most common surname in the world. Aprox 80 million Changs!

Some of the men who died with George Armstrong Custer in the Battle of the  
Little Big Horn had been in the Vatican Guard!

Sweet chocolate called German chocolate was named for an Englishman, Sam German!

Wagon drivers in old Scotland were called "whiggamores." They once marched on  
Edinburgh to oppose the king. From them comes the word Whigs, name of a British  
political party.

Thirteen children was an average size family 400 years ago.

IRELAND IS UNITING!! Not really, but both North and South have a plan to bring in  
about \$220 million a year from genealogists. Thirty-five database centers with  
computerized church and state records dating back hundreds of years are being set up  
across the island. These will contain birth, marriage and death certificates. All  
records should be complete within three years.

CAPITALISM COMES TO CZECHOSLOVAKIA. Among the newly permitted businesses is a firm  
that will help in Czech research. If you know the name of an ancestor, his village,  
and date of an event write Vladimir Kejla, Genealogicka Agentura, ul. Vrbenskeho 11,  
701 00 Ostrava 1, Czechoslovakia. Rates are \$6 per hour. (Address etc. copied from  
So King newsletter who copied from an Iowa GS publication. Figures not verified.)



## NEWS FROM THE LIBRARY

### THE SUTRO FILE

Do you know what the Sutro File is? Did you know that the Kitsap Regional Library on Sylvan Way has this file on microfiche?

The Sutro File consists of three catalogs of the genealogical holdings of the Sutro Library in San Francisco, California. This material is available through inter-library loan, however, there are some restrictions. The catalogs are separately arranged by SURNAME, STATE AND LOCAL HISTORY, and MISCELLANEOUS.

The SURNAME catalog consists of 110 microfiche and contain about 120,000 entries. The entries are arranged alphabetically and pertain primarily to family histories.

The STATE AND LOCAL HISTORY catalog consists of 68 microfiche with over 70,000 entries. These references are arranged alphabetically by state or foreign country and sub-arranged by county, cities, towns, and parishes within the state.

The MISCELLANEOUS catalog is a subject catalog of additional topics of genealogical interest, consisting of 4 microfiche and about 4,000 entries. Major categories are censuses, churches, ethnic groups, passenger lists, and wars.

You can read this file on the new microfiche reader which also will make copies of the material. The file is kept at the reference (information) desk. Good searching!!!

-----  
The following is the collection of George Schweitzer books in our library:

CIVIL WAR GENEALOGY  
GENEALOGICAL SOURCE HANDBOOK (Hanging File)  
GEORGIA GENEALOGICAL RESEARCH  
KENTUCKY GENEALOGICAL RESEARCH  
MASSACHUSETTS GENEALOGICAL RESEARCH  
NEW YORK GENEALOGICAL RESEARCH  
NORTH CAROLINA GENEALOGICAL RESEARCH  
PENNSYLVANIA GENEALOGICAL RESEARCH  
REVOLUTIONARY WAR GENEALOGY  
SOUTH CAROLINA GENEALOGICAL RESEARCH  
TENNESSEE GENEALOGICAL RESEARCH  
VIRGINIA GENEALOGICAL RESEARCH  
WAR OF 1812 GENEALOGY

THE MAYFLOWER. What happened to this venerable and venerated ship? A bill of sale dated 1624 verifies it was sold for salvage to a Buckinghamshire farmer, William Russell. At the current rate of exchange he paid \$384 for the hull. It was moved to his farm, placed upside down on a foundation, and used as a barn. Still in existence according to the Olympia GS quarterly, April 1992.

1890 CHICAGO CENSUS. Frustrated by the loss of the 1890 Federal census in Cook Co. IL? There are poll lists of voters for the city of Chicago for 1888, 1890 and 1892. Illinois State Archives has this information. (Grays Harbor Gen Soc, May 1992)



KITSAP COUNTY MARRIAGES 1860-1915 (Cont.)

DANIEL LOGAN BUREN, age 22, white, banking

Son of Knut Buren and Isabel Johnson

Resident of Bremerton; native of Round Lake, Minn.

VIOLA MARGURITE MILLER, age 18

Daughter of George Edward Miller and Jennie Lillian Celene

Resident of Port Orchard; native of Issaquah, Wash.

Officiating: J.B. Yakey, Judge Superior Court. Place: Port Orchard, Wash.

Date: 01 Feb 1910, license date 29 Jan 1910; first marriage for both

Witnesses: Dr. H.L. Miller and R.A. Noyes, both of Port Orchard

WILLIAM M. WRIGHT, age 22, white, clerk

Son of James Wright and Harriet McLeod

Resident of Chicago, Ill.; native of Chicago

ELOUISE MENDENHALL, age 19, white, housekeeper

Daughter of Henry Mendenhall and Elvira Clark

Resident of Oakland, Calif.; native of Oakland

Officiating: Rev. Frank R. Gillett. Place: Port Orchard, Wash.

Date: 29 Jan 1910, license date 29 Jan 1910; first marriage for both

Witnesses: Mr. and Mrs. H.B. Fleming of Alameda, Wash.

EDW. W. PULVER, age 21, white, law clerk

Son of H. Pulver and C. Brotchies

Resident of Seattle; native of Nebraska

FLORENCE TAYLOR, age 21, white

Daughter of Wm. Taylor and Eva Shafer

Resident of Seattle; native of Minnesota

Officiating: W.E. Pitcher, Minister. Place: Port Orchard, Wash.

Date: 10 Feb 1910, license date 10 Feb 1910; first marriage for both

Witnesses: J.P. Hendron and Geo. E. Miller

R. E. SMITH, age 22, white, sheetmetal worker

Son of Fred Smith and Edith Ballinger

Resident of Bremerton; native of "U.S."

CLARA R. KATOLL, age 21, white

Daughter of August --- and Annie Woft

Resident of Bremerton; native of Canada

Officiating: Rev. Oscar Fedder. Place: Bremerton, Wash.

Date: 25 Dec 1909; license date 24 Dec 1909; first marriage for both

Witnesses: Jerry J. O'Neill and Mae Katol, both of Bremerton

WILLIAM GORETTI, age 28, "Italian, in saw mill"

Son of Edward Goretti and Cyrieni Cersa

Resident of Port Blakely; native of Italy

ANNA FOTI, age 20, "Italian"

Daughter of Frank Foti and Lorrentina Michelo

Resident of Port Blakely; native of Italy

Officiating: T.H. Lewis, Minister. Place: Pt. Blakely, Wash.

Date: 26 Feb 1910; first marriage for both

Witnesses: Adolf Drago of Bremerton and Annie Foti of Pt. Blakely

W. J. ELLIS, age 36, white, housemoving

Son of A. Ellis and Herleg Hiney

Resident of Seattle; native of Kansas

EVA MAY NISSEN, age 20, white, housekeeping

Daughter of George Nissen and Mary Elizabeth Wilkie

Resident of Seattle; native of Seattle

Officiating: Nothing recorded

Date: License date 12 Mar 1910

Witnesses: None listed.



HARRY O. PETERSON, age 20, white, photographer  
Son of John Peterson and Johanna Johnson  
Resident of Bremerton; native of U.S.

MARIE SCHOENBERGER, age 23, white  
Daughter of John H. Schoenberger and Marie Timmerhoff  
Resident of Bremerton; native of U.S.

Officiating: Rev. Oscar Fedder. Place: Bremerton, Wash.

Date: 10 Mar 1910, license date 07 Mar 1910; first marriage for both

Witnesses: Stacey C. Bittner and Viola Rieck, both of Bremerton

FLOYD LEWIS BLAKE, age 28, paperhanger  
Son of Frank Blake and Florence Evelin Hall  
Resident of 5823 5th Ave NW, Seattle; native of Wisconsin

MYRTLE AMELIA BRADFORD, age 22, white  
Daughter of Wm. Bradford and Annie Pettibone  
Resident of Portage, Wash.; native of Illinois

Officiating: Richard Oates, Clergyman. Place: Port Orchard, Wash.

Date: 13 Mar 1910; groom's second marriage, bride's first

Witnesses: Lulu Bunker and Alberta Oates, both of Bremerton

R. H. RODOLF, legal age, white, banker  
Son of Chas. A. Rodolf and Agnes Collins  
Resident of Seattle; native of Iowa

VERNIE VERNON, legal age, white  
Daughter of W.H. Vernon and Mary Lee  
Resident of Seattle; native of South Dakota

Officiating: No info given. Place: Port Orchard, Wash.

Date: 12 Mar 1910, license date 07 Mar 1910; first marriage for both

Witnesses: L.W. Tucker of Seattle and Viola Cullen

T. A. LUND, age 35, white, ship carpenter  
Son of T.T. and Christina Lund  
Resident of Port Orchard; native of Norway

AMANDA ANDRESEN, age 26, white, domestic  
Daughter of Waldemar Andreassen and Berthea Olsen  
Resident of Port Orchard; native of Norway

Officiating: Rev. D.B. Roos. Place: Bremerton, Wash.

Date: 13 Feb 1910, license date 11 Feb 1910; groom's second marriage, bride's first

Witnesses: Ludwig Andersen and Mrs. Anne Andersen

JAMES SHERLOCK, age 31, white, machinist  
Son of William and Minnie Sherlock  
Resident of Bremerton; native of Paterson ?

MIS-KARNEY MYKELBIST, age 21, white, actress  
Daughter of --- Ugelstad  
Resident of Seattle; native of Norway

Officiating: Rev. F.S.A. Jensen. Place: Charleston, Wash.

Date: 11 Apr 1910, license date 11 Apr 1910; first marriage for both

Witnesses: Mr. and Mrs. Wm. Malone

EVERETT BRYANT, age 27, white, carpenter  
Son of N.J. Bryant and Eva Lawrence  
Resident of Portland, Ore.; native of Maine

EMILY WILLIAMSON, age 21, white, seamstress  
Daughter of G.A. Williamson and Celia Gooch  
Resident of Bangor, Me.; native of Maine

Officiating: W.E. Pitcher, Christian Minister. Place: Port Orchard, Wash.

Date: 12 Apr 1910, license date 12 Apr 1910; first marriage for both

Witness: Geo. E. Miller of Port Orchard



ANDREW MOEN, age 25, common laborer  
 Son of Thomas Moen and Karine Rue  
 Resident of Seattle; native of Norway  
 ANNA KNUTSON, age 21, white, domestic  
 Daughter of Ole Knutson and Emma Ryen  
 Resident of Poulsbo; native of Iowa  
 Officiating: Rev. Chr. Mohn. Place: Poulsbo, Wash.  
 Date: 09 Apr 1910; first marriage for both  
 Witnesses: Andrew Sorenson and Edna Knutson

EBBERT WESLEY JOHNSON, age 21, white, machinist  
 Son of William Johnson and Mattie Shourds  
 Resident of Bremerton; native of Indiana  
 JESSIE BELLE LUSK HAVEN, age 21, white  
 Daughter of Elazier Lusk and Sarah Augusta Hawley  
 Resident of Bremerton; native of New York  
 Officiating: R. Oates, Clergyman. Place: Bremerton, Wash.  
 Date: 13 Apr 1910, license date 13 Apr 1910; second marriage for both  
 Witnesses: Sarah Glassbrock and Herbert L. Osborn, both of Bremerton

ROBERT OSCAR UNDERWOOD, age 29, white, marine officer  
 Son of John Underwood and N.J. Hallard  
 Resident of Bremerton; native of Gaston Co., S.C.  
 EMROY Du BOIS, age 24, white  
 Daughter of Richard C. DuBois and --- Richardson  
 Resident of District of Columbia; native of D.C.  
 Officiating: Rev. Harry Hudson, Clergyman. Place: USS Pennsylvania, PSNS  
 Date: 20 Apr 1910; first marriage for both  
 Witnesses: R.C. Grady and Frank G. Blasdel, both of USS Pennsylvania

OMBROSE DAVIS, age 20, Indian  
 Son of Jack Davis and Jennie John  
 Resident of Suquamish; native of Kitsap Co.  
 LENA SIDDLE, age 20, half-breed  
 Daughter of Lyman and Julia Siddle  
 Resident of Muckleshoot Reservation; native of King Co., Wash.  
 Officiating: P. Gard, Minister of the Gospel. Place: Suquamish, Wash.  
 Date: 23 Apr 1910; first marriage for both  
 Witnesses: Joseph W. George, Jennie George and Charles Alens, all of Suquamish

WM. F. BROWN, age 21, white, street car conductor  
 Son of Wm. Brown and Martha Fleck  
 Resident of Seattle; native of Indiana  
 NITA CORNTHWAITE, age 21, white, bookkeeper  
 Daughter of Jno. Cornthwaite  
 Resident of Seattle; native of England  
 Officiating: W.E. Pitcher, Minister. Place: Port Orchard, Wash.  
 Date: 30 Apr 1910, license date 30 Apr 1910; first marriage for bride, groom ?  
 Witnesses: Geo. E. Miller and W. Leigh Wilson

CARL DEMPZ TUTTLE, age 36, white, railroad  
 Son of Jason Tuttle and Armilda Jones  
 Resident of Seattle; native of Illinois  
 LENNA HINTON, age 20, white  
 Daughter of C. Hinton and Melvina N. Crow  
 Resident of Crosby, Wash.; native of Oregon  
 Officiating: R. Oates, Clergyman. Place: Bremerton, Wash.  
 Date: 30 Apr 1910, license date 30 Apr 1910; groom's second marriage, bride's first  
 Witnesses: Earnest Hinton and Solvie Hinton, both of Bremerton



F. BALDWIN, age 29, white, machinist  
 Son of Wm. Baldwin and Laura Wendell  
 Resident of Bremerton; native of Oregon

LOUISE FOSTER, age 24, white, milliner  
 Daughter of Wm. Foster and Laura Rector  
 Resident of San Francisco, Calif.; native of Tennessee

Officiating: W.E. Pitcher, Minister. Place: Port Orchard, Wash.  
 Date: 28 Apr 1910, license date 28 Apr 1910; groom's second marriage, bride's first  
 Witnesses: Charles Berry and Eva Berry, both of Port Orchard

JAMES R. PERSHALL, age 66, white, clergyman  
 Son of Jas. Pershall and Lydia Logston  
 Resident of Seattle; native of Missouri

ANNIE McKENZIE VOWELL, age 54, white  
 Daughter of Jas. McKenzie and Nancy Robnett  
 Resident of Seattle; native of Missouri

Officiating: W.E. Pitcher, Minister. Place: Port Orchard, Wash.  
 Date: 02 May 1910, license date 02 May 1910; second marriage for both  
 Witnesses: John and Bessie Crothers

C. H. WASHINGTON, age 35, Negro, janitor  
 Son of A. Washington and Annita Eddings  
 Resident of Seattle; native of Cairo, Ill.

IDA M. HILL, age 33, Negro, stenographer  
 Daughter of Jno. W. Hill and E.M. Oliver  
 Resident of Seattle; native of California

Officiating: W.E. Pitcher, Clergyman. Place: Port Orchard, Wash.  
 Date: 30 Apr 1910, license date 30 Apr 1910; groom's second marriage, bride's first  
 Witnesses: N.H. Henderson of Seattle and Geo. E. Miller of Port Orchard

ALBERT GEORGE GALL, age 25, white, foreman  
 Son of August and Catherine Gall  
 Resident of Charleston, Wash.; native of Gloucester, England

SARAH GOODMAN, age 21, white, housekeeper  
 Daughter of Rosant and Mary Goodman  
 Resident of Charleston; native of Chicago, Ill.

Officiating: Edward R. Duff, J.P. Place: Charleston, Wash.  
 Date: 01 May 1910, license date 01 May 1910; first marriage for both  
 Witnesses: Bertha Thorlakson and Frances M. Duff, both of Charleston

EDWARD W. FISHER, age 28, white, machinist  
 Son of Jno. Fisher and Rose Hall  
 Resident of Bremerton; native of Illinois

ROSE CRAFT, age 20, white  
 Daughter of Karl Kraft and Fredrika Brandlein  
 Resident of Silverdale, Wash.; native of Germany

Officiating: W.E. Pitcher, Minister. Place: Port Orchard, Wash.  
 Date: 18 May 1910, license date 18 May 1910; first marriage for both  
 Witnesses: Mrs. George Pennev of Charleston, Wash. and Harry Karle of Bremerton

ADOLF LOVAS, age 26, white, motorman  
 Son of Gabriel Lovas and Maria Mondahl  
 Resident of Poulsbo, Wash.; native of South Dakota

AMANDA CAROLINE SHOLD, age 26, white, teacher  
 Daughter of John Shold and Marit Jacobson  
 Resident of Poulsbo; native of Sweden

Officiating: Rev. Chr. Mohn. Place: Poulsbo at the home of Mr. and Mrs. Schold  
 Date: 15 May 1910; first marriage for both  
 Witnesses: Jacob Shold and Minnie Lovas, both of Poulsbo



ANDREW MOEN, age 25, common laborer  
 Son of Thomas Moen and Karine Rue  
 Resident of Seattle; native of Norway  
 ANNA KNUTSON, age 21, white, domestic  
 Daughter of Ole Knutson and Emma Ryen  
 Resident of Poulsbo; native of Iowa  
 Officiating: Rev. Chr. Mohn. Place: Poulsbo, Wash.  
 Date: 09 Apr 1910; first marriage for both  
 Witnesses: Andrew Sorenson and Edna Knutson

EBBERT WESLEY JOHNSON, age 21, white, machinist  
 Son of William Johnson and Mattie Shourds  
 Resident of Bremerton; native of Indiana  
 JESSIE BELLE LUSK HAVEN, age 21, white  
 Daughter of Elazier Lusk and Sarah Augusta Hawley  
 Resident of Bremerton; native of New York  
 Officiating: R. Oates, Clergyman. Place: Bremerton, Wash.  
 Date: 13 Apr 1910, license date 13 Apr 1910; second marriage for both  
 Witnesses: Sarah Glassbrock and Herbert L. Osborn, both of Bremerton

ROBERT OSCAR UNDERWOOD, age 29, white, marine officer  
 Son of John Underwood and N.J. Hallard  
 Resident of Bremerton; native of Gaston Co., S.C.  
 EMROY Du BOIS, age 24, white  
 Daughter of Richard C. DuBois and --- Richardson  
 Resident of District of Columbia; native of D.C.  
 Officiating: Rev. Harry Hudson, Clergyman. Place: USS Pennsylvania, PSNS  
 Date: 20 Apr 1910; first marriage for both  
 Witnesses: R.C. Grady and Frank G. Blasdel, both of USS Pennsylvania

OMBROSE DAVIS, age 20, Indian  
 Son of Jack Davis and Jennie John  
 Resident of Suquamish; native of Kitsap Co.  
 LENA SIDDLE, age 20, half-breed  
 Daughter of Lyman and Julia Siddle  
 Resident of Muckleshoot Reservation; native of King Co., Wash.  
 Officiating: P. Gard, Minister of the Gospel. Place: Suquamish, Wash.  
 Date: 23 Apr 1910; first marriage for both  
 Witnesses: Joseph W. George, Jennie George and Charles Alens, all of Suquamish

WM. F. BROWN, age 21, white, street car conductor  
 Son of Wm. Brown and Martha Fleck  
 Resident of Seattle; native of Indiana  
 NITA CORNTHWAITE, age 21, white, bookkeeper  
 Daughter of Jno. Cornthwaite  
 Resident of Seattle; native of England  
 Officiating: W.E. Pitcher, Minister. Place: Port Orchard, Wash.  
 Date: 30 Apr 1910, license date 30 Apr 1910; first marriage for bride, groom ?  
 Witnesses: Geo. E. Miller and W. Leigh Wilson

CARL DEMPZ TUTTLE, age 36, white, railroad  
 Son of Jason Tuttle and Armilda Jones  
 Resident of Seattle; native of Illinois  
 LENNA HINTON, age 20, white  
 Daughter of C. Hinton and Melvina N. Crow  
 Resident of Crosby, Wash.; native of Oregon  
 Officiating: R. Oates, Clergyman. Place: Bremerton, Wash.  
 Date: 30 Apr 1910, license date 30 Apr 1910; groom's second marriage, bride's first  
 Witnesses: Earnest Hinton and Solvie Hinton, both of Bremerton



F. BALDWIN, age 29, white, machinist

Son of Wm. Baldwin and Laura Wendell

Resident of Bremerton; native of Oregon

LOUISE FOSTER, age 24, white, milliner

Daughter of Wm. Foster and Laura Rector

Resident of San Francisco, Calif.; native of Tennessee

Officiating: W.E. Pitcher, Minister. Place: Port Orchard, Wash.

Date: 28 Apr 1910, license date 28 Apr 1910; groom's second marriage, bride's first

Witnesses: Charles Berry and Eva Berry, both of Port Orchard

JAMES R. PERSHALL, age 66, white, clergyman

Son of Jas. Pershall and Lydia Logston

Resident of Seattle; native of Missouri

ANNIE MCKENZIE VOWELL, age 54, white

Daughter of Jas. McKenzie and Nancy Robnett

Resident of Seattle; native of Missouri

Officiating: W.E. Pitcher, Minister. Place: Port Orchard, Wash.

Date: 02 May 1910, license date 02 May 1910; second marriage for both

Witnesses: John and Bessie Crothers

C. H. WASHINGTON, age 35, Negro, janitor

Son of A. Washington and Annita Eddings

Resident of Seattle; native of Cairo, Ill.

IDA M. HILL, age 33, Negro, stenographer

Daughter of Jno. W. Hill and E.M. Oliver

Resident of Seattle; native of California

Officiating: W.E. Pitcher, Clergyman. Place: Port Orchard, Wash.

Date: 30 Apr 1910, license date 30 Apr 1910; groom's second marriage, bride's first

Witnesses: N.H. Henderson of Seattle and Geo. E. Miller of Port Orchard

ALBERT GEORGE GALL, age 25, white, foreman

Son of August and Catherine Gall

Resident of Charleston, Wash.; native of Gloucester, England

SARAH GOODMAN, age 21, white, housekeeper

Daughter of Rosant and Mary Goodman

Resident of Charleston; native of Chicago, Ill.

Officiating: Edward R. Duff, J.P. Place: Charleston, Wash.

Date: 01 May 1910, license date 01 May 1910; first marriage for both

Witnesses: Bertha Thorlakson and Frances M. Duff, both of Charleston

EDWARD W. FISHER, age 28, white, machinist

Son of Jno. Fisher and Rose Hall

Resident of Bremerton; native of Illinois

ROSE CRAFT, age 20, white

Daughter of Karl Kraft and Fredrika Brandlein

Resident of Silverdale, Wash.; native of Germany

Officiating: W.E. Pitcher, Minister. Place: Port Orchard, Wash.

Date: 18 May 1910, license date 18 May 1910; first marriage for both

Witnesses: Mrs. George Pennev of Charleston, Wash. and Harry Karle of Bremerton

ADOLF LOVAS, age 26, white, motorman

Son of Gabriel Lovas and Maria Mondahl

Resident of Poulsbo, Wash.; native of South Dakota

AMANDA CAROLINE SHOLD, age 26, white, teacher

Daughter of John Shold and Marit Jacobson

Resident of Poulsbo; native of Sweden

Officiating: Rev. Chr. Mohn. Place: Poulsbo at the home of Mr. and Mrs. Schold

Date: 15 May 1910; first marriage for both

Witnesses: Jacob Shold and Minnie Lovas, both of Poulsbo



BREMERTON NAVAL HOSPITAL RECORDS

NAME	BIRTHPLACE	ADMITTED, AGE	ENLISTMENT
DICKENSON, Murrel	Michigan	17 May 1917 21y	Seattle WA 10 Apr 1917
DICKERSON, William Floyd	Illinois	10 Aug 1915 23y	Chicago IL 12 Dec 1912
DICKEY, LeRoy	Missouri	23 Apr 1913 22y 8m	KC MO 18 Mar 1912 USMC
DICKINSON, James Walter	Texas	07 Jun 1917 21y 7m	Okla City OK 16 Apr 1917
DICKINSON, John Quincy	Vermont	28 May 1917 19y 7m	Minneap MN 18 Apr 1917
DICKINSON, Leroy Guile	Connecticut	10 Jan 1917 29y 6m	St Louis MO 20 Dec 1916
DICKINSON, Ralph Elliot	Cincinnati OH	29 Oct 1909 20y 11m	Cincin OH 27 Jan 1906
DIEMER, Otto	Cincinnati OH	26 Mar 1913 30y 6m	
DIETSCHWEILER, Gustav Adolph	Switzerland	08 Oct 1909 27y 1m	San Fran CA 24 Apr 1909
DIETZ, John Henry	LaCrosse WI	21 Apr 1908 21y 8m	Omaha NB 07 Jan 1907
DILLON, Thomas Francis	New York	19 Jun 1913 34y 1m	Portland OR 01 Feb 1912
DILLS, Robert James	Roff OK	24 Jan 1913 21y 11m	LA CA 28 Jun 1912 USMC
DIMOND, Ernest G.	Mississippi	07 May 1917 20y	Houston TX 25 Jul 1916
DINGES, Martin	Washington DC	10 Sep 1903 22y 3m	Wash DC 29 May 1899 USMC
DINNEAN, Timothy (Ret)	Massachusetts	23 Jun 1914 60y	Died 18 Aug 1914
DISHMAN, John Alexander	Kentucky	22 May 1917 22y 7m	Mare Isl CA 17 May 1916
DISLEY, Robert M.	Connecticut	03 Jun 1917 19y 6m	Seattle WA 03 May 1917
DISMUKE, Edward Tom	Texas	30 Mar 1914 21y	Dallas TX 24 May 1911
DITTRICH, John August	Washington DC	08 Apr 1910 25y 1m	Pitts PA 13 Jul 1908
DIZON, Pablo	Philippines	02 Jun 1913 23y 7m	Cavite PI 21 Nov 1912
DODGE, Benton George Luther	Cleveland OH	21 Sep 1907 22y 2m	Sea WA 15 Dec 1906 USMC
DODGE, Ralph Elson	Wisconsin	30 Apr 1917 19y 5m	Seattle WA 11 Apr 1917
DODGE, Roy A.	Ohio	23 May 1913 22y 4m	Denver CO 23 Dec 1912 US
DODGE, Royal Lampson	Jamestown CA	05 May 1908 22y 7m	San Fran CA 02 Sep 1904
DODSON, Purvey Otto	Arkansas	18 Nov 1915 23y 8m	Denver CO 17 Feb 1915
DOE, Joseph	Schaffer MI	19 Oct 1907 21y 4m	Seattle WA 11 Oct 1907
DOHNEY, Frank Whalen	Trenton NJ	30 Sep 1905 22y 3m	PSNS 08 May 1905
DORHMANN, Arthur Henry	Iowa	27 Apr 1915 23y 7m	Omaha NB 20 Dec 1912
DOLAN, Stanley	Manistee MI	20 Mar 1913 25y 10m	Chicago IL 23 Mar 1909 U
DOLAN, William Thomas	Bridgeport CT	18 Mar 1912 22y 2m	Died 09 May 1912
DOLIN, William John	Louisiana	04 Jun 1917 19y 9m	New OrL LA 12 Apr 1917
DONNELLY, Harry Alfred	Phila PA	24 Aug 1907 24y 2m	New York NY 16 Aug 1905
DONNELLY, Hugh Francis	Phila PA	12 Feb 1910 28y 2m	PSNS 22 Jun 1909 USMC
DONOHUE, Charles Oliver	Milford Ctr OH	09 Apr 1905 21y 5m	Chicago IL 11 Nov 1901 U
DOOLEY, James	Missouri	29 Jul 1913 38y 6m	Mare Isl CA 30 Aug 1912
DOOLEY, Leon Burton	Washington	02 Mar 1914 20y 3m	Sea WA 16 Jun 1913 USMC
DOORMAN, Harry	Iowa	12 Apr 1915 23y 1m	Portland OR 23 Oct 1914
DOOMUN, Joseph David	Pennsylvania	20 Feb 1914 23y 1m	San Fran CA 14 Jul 1913
DORN, Lester	Spokane WA	10 Sep 1906 21y 10m	PSNS 30 Oct 1905
DORRANCE, Ralph Leon	Scotts MI	25 Mar 1911 22y 4m	Denver CO 16 Sep 1917
DORSETT, Richard Scott	Texas	14 Oct 1914 27y 5m	Dallas TX 26 Jan 1911
DOST, Franklin Leon	Konitz Germany	23 Jan 1905 25y 4m	Syrac NY 22 Nov 1900 USM
DOUGAN, William Gordon	Minnesota	30 Jan 1914 23y 2m	PSNS
DOUGHERTY, Patrick	Ireland	30 Jun 1905 33y 11m	PSNS 02 Jun 1905
DOUGHTY, John	Phila PA	03 Jun 1908 23y 8m	Phila PA 17 May 1907
DOUGHTY, Wiley Richard	Tennessee	17 Apr 1915 28y 4m	Mare Isl CA 11 Dec 1914
DOUGLAS, John	Michigan	27 Apr 1914 28y 8m	PSNS 17 Nov 1913
DOVELL, Gilbert Hiram	Virginia	07 Oct 1914 33y 5m	Des Moines IA 14 Aug 191
DOW, Rae Mizner	Washington	24 Oct 1913 24y 4m	San Diego CA 13 May 1913
DOW, Robert	California	23 Feb 1917 24y 8m	Seattle WA 14 Feb 1917
DOW, Robert Service	Newark NJ	21 Aug 1911 26y 5m	Mare Isl CA 14 Jul 1910
DOWD, Job Edwin	Ontanagon MI	12 May 1908 24y	PSNS 12 Apr 1908 USMC
DOWN, Thomas Harvey	Washington	01 Sep 1913 25y	Phila PA 31 Dec 1910 USM



DOWNEY, Fred	Pocohontas AR	25 Feb 1911	22y 3m	Dallas TX 07 Feb 1910
DOWNHAM, Ollie Robert	Logansport IN	12 Oct 1905	20y 3m	Chicago IL 06 Nov 1901
DOWNING, Herbert Butler	Iowa	04 May 1915	25y 1m	Omaha NB 05 Jul 1912
DOYLE, David Edward	Oklahoma	21 Oct 1915	25y 11m	Dallas TX 12 Mar 1912
DOYLE, Edward Joseph	New York NY	20 Dec 1909	33y 5m	PSNS 02 Dec 1909
DOYLE, George Patrick	Washington	20 Oct 1915	27y 8m	PSNS 20 Sep 1915
DOYLE, James Francis	Sedus NY	26 Nov 1907	23y 2m	Rochester NY 08 Feb 1907
DOYLE, James Mathew	Huron KS	18 Mar 1912	22y 3m	Kans City MO 09 May 1908
DOYLE, Joseph Michael	Keokuk IA	06 Jun 1905	23y 9m	Sac CA 27 Jul 1903 USMC
DOZET, Walter Philip	New Orleans LA	19 Jun 1910	19y 9m	New Orl LA 15 Apr 1909
DRAEMEL, Milo Frederick	Nebraska	22 Jun 1914	30y	Lieut.
DRAGOUN, John	Nebraska	26 Jun 1916	27y 7m	Omaha NB 05 Jan 1914
DRASHNER, John	Cleveland OH	30 Jan 1905	22y 4m	Cleveland OH 17 Oct 1903
DREAVES, William Richmond	Lowell MA	15 Jan 1906	21y 6m	San Fran CA 26 Jul 1905
DREISS, Carl August Jr.	Missouri	12 Jan 1917		Dallas TX 25 Oct 1915
DREWERY, Lorenzo Willows	Southwell Engl	13 Mar 1905	32y 1m	PSNS 30 Jan 1904
DRINKWATER, Earl Dallas	Clyde OH	02 May 1913	25y 3m	Toledo OH 23 Jul 1909 USMC
DRISCOLL, Louis Vincent	California	02 Mar 1915	27y 9m	PSNS 04 Oct 1913
DRIVER, Orvil	Indiana	16 Jun 1915	34y 1m	San Fran CA 14 Jan 1915
DRUMWRIGHT, Wm Christopher	Lauderdale TN	11 Dec 1908	30y	St Louis MO 10 Aug 1908
DRURY, Everett James	Missouri	18 Apr 1917	20y 2m	Sea WA 10 Nov 1916 USMC
DUARTE, Ernest DeSails	California	21 May 1914	19y 6m	San Diego CA 20 Jan 1914
DUBERT, Claude William	Horseheads NY	12 Jun 1909	19y 7m	Elmira NY 11 Feb 1907
DUCKWORTH, Charles Calvin	Brookfield MO	22 Apr 1908	22y 1m	Brookfield MO 15 Dec 1906
DUCKWORTH, Ora William	Texas	05 May 1917	21y 10m	Dallas TX 10 Apr 1917
DUENAS, Joaquin	Guam	17 May 1916	27y	Agana Guam 08 Dec 1914
DUENAS, Juan Lizama	Guam	29 Jan 1916	23y 5m	Agana Guam 13 Feb 1914
DUFFILD, Cornelius	Pennsylvania	08 Sep 1913	38y 8m	Mare Isl CA 27 May 1913
DUFFY, Albert Benedict	Minnesota	22 Jun 1917	22y 5m	SLC UT 27 Apr 1917
DUFFY, John	Boonville IA	07 Jun 1911	23y	Fargo ND 28 Mar 1911 USMC
DUFFY, Michael Joseph	Racine WI	23 Aug 1906	32y	PSNS 23 Aug 1905
DUGAN, Earl LeRoy	Iola KS	09 Jul 1910	24y	Kans City MO 17 Sep 1906
DUGAN, Harry Clinton	Clarion PA	13 Aug 1912	33y 9m	Toledo OH 22 Jan 1909 USMC
DUGAN, John	Ireland	03 May 1913	45y 5m	Olongap PI 23 Oct 1909 USMC
DUHIG, Mathew	Limerick Ire.	19 Feb 1905	35y 11m	NY NY 14 Nov 1902 USMC
DULEY, Claude Carson	Wisconsin	09 Jul 1913	21y 8m	Milwaukee WI 21 Oct 1911
DUMAS, Clifford	San Fran CA	30 Dec 1911	24y 7m	Los Ang CA 10 Dec 1909
DUNCAN, Alexander	New York	17 Nov 1913	30y	Portland OR 07 Nov 1913
DUNCAN, James Allen	Kentucky	12 Feb 1916	24y 4m	SLC UT 09 Oct 1914
DUNCAN, James Brady	Dawson Co GA	21 Jul 1911	28y 3m	Mare Isl CA 04 Nov 1909
DUNCAN, John	Scotland	13 Jul 1912	49y 3m	Mare Isl CA 01 Oct 1908
DUNCAN, Thaddeus Constantine	Maysville MO	14 Aug 1913	40y 2m	KC MO 26 Jan 1910 USMC
DUNGIN, Charles Henry	Portsmouth NH	26 Jul 1910	36y 2m	Norfolk VA 27 May 1909
DUNHAM, Clarence Octave	North Paris ME	04 Mar 1911	19y 5m	Boston MA 01 Feb 1909
DUNHAM, Harry Everly	Minnesota	13 Sep 1916	23y	Vallejo CA 02 Jun 1916 USMC
DUNHAM, Logan Grant	Cherry Val IL	08 Oct 1905	20y 8m	Chicao IL 11 Jun 1902
DUNKERLY, Charles Henry	So Boston MA	16 Mar 1911	24y 3m	PSNS 14 Jun 1910
DUNKIN, James C.	Arkansas	18 May 1917	18y 10m	Dallas TX 11 Apr 1917
DUNLAP, Burt Cochran	Minnesota	17 Nov 1916	20y 3m	San Diego CA 07 Jul 1915
DUNLAP, Carl Walton	Eden AL	13 May 1909	20y	Okla City OK 03 Jul 1908
DUNN, Charles Fred	Iowa	31 Dec 1915	25y 10m	USS Princeton 27 Feb 1915
DUNN, Ernest Vivian	Texas	07 Jan 1916	25y 10m	Dallas TX 24 Sep 1915
DUNN, James	El Paso TX	24 May 1910	23y 9m	Los Ang CA 01 Dec 1908
DUNN, Mahlon	Bowling Grn KY	24 Mar 1906	23y 4m	Evansville IN 02 Sep 19
DUNPHY, Thomas Joseph	London Ontario	24 Aug 1909	25y 4m	Duluth MN 24 Jan 1906 USMC
DURBAN, Jacob Jr	Beverly IL	25 May 1909	22y 11m	Dallas TX 20 May 1908



DURGIN, Charles Henry	Portsmouth NH	22 Oct 1912	38y 7m	Norfolk VA	27 May 1909
DURNEY, Robert Meredith	Cleveland OH	01 Oct 1909	22y 6m	Cleveland OH	10 Feb 1906
DURPHY, Monroe Joseph	Illinois	17 Nov 1913	19y 6m	Chicago IL	04 Dec 1911
DUTCHER, William Elliott	Nebraska	21 Oct 1916	26y 2m	Kansas City MO	27 Jun 1916
DUWE, Martin Benhardt	Montana	19 Dec 1913	24y 7m	Butte MT	19 Aug 1913
DYCKMAN, Franz William	So Haven CT	22 Sep 1910	24y 6m	St Louis MO	05 Feb 1908
DYE, Fred Harvey	Kansas	12 Oct 1915	32y 11m	Kansas City MO	28 Nov 1911
DYER, Benjamin Franklin	Galveston TX	12 Oct 1912	26y 8m	Dallas TX	04 Jun 1912
DYER, Bernard Neal	Maryland	25 Jan 1913	22y 1m	"Independence"	28 Dec 1911
DYER, Earl William	Oklahoma	12 Oct 1914	22y	Kansas City MO	23 Oct 1911
DYSERT, Samuel	Alleghany PA	04 Aug 1910	31y 9m	Mare Isl CA	17 Oct 1909
EARL, George Russell	Michigan	28 Jul 1916	28y 2m	Denver CO	11 Jan 1913
EARL, Ira	Minneapolis KS	30 Sep 1909	25y 11m	Omaha NB	10 Jan 1906
EARL, Pursel John	Highland OH	04 Mar 1908	22y 5m	PSNS	10 Feb 1908
EARL, Warren Nason	New York	02 May 1917	22y 9m	Seattle WA	10 Apr 1917
EARLEY, John	Pennsylvania	05 Dec 1916	31y 2m	PSNS	22 Apr 1916
EARP, Stanley Maxwell	Garden City KS	11 Dec 1908	19y 1m	Pueblo CO	13 Jul 1908
EASTER, William Rufus	Indian Terr.	17 Jan 1915	26y 6m	Mare Isl CA	15 Mar 1911
EATON, Charles Henry	Vernon CT	19 Feb 1908	25y	PSNS	21 Jan 1908
EATON, Frank Joseph	Toledo OH	25 Mar 1912	24y 2m	Toledo OH	13 May 1909 USMC
EATON, Joseph	Boston MA	20 Jul 1910	39y 11m	PSNS	18 Nov 1909
EBERHART, Porter Allen	Pennsylvania	08 Apr 1913	22y 9m	Denver CO	20 May 1912 USMC
EBERLE, John Raymond	Kansas	15 Jun 1917	21y 2m	Denver CO	18 Apr 1917
EBERTOWSKI, John William	Winona MN	02 Feb 1910	22y 10m	Minneapolis MN	03 Aug 1907
ECHAVES, Pantaleon	Philippines	17 Feb 1914	31y 2m	PSNS	22 Jan 1914
ECHER, Joseph Jr.	Lineville IA	28 Feb 1911	20y 4m	Des Moines IA	16 Oct 1907
ECKERLE, Edward Henry	Indiana	30 Dec 1914	30y 9m	PSNS	06 Nov 1912
ECKSTROM, John L.	Sweden	31 Jan 1907	43y 2m	Died	02 Feb 1907
EDDINS, Arthur Henry	Mississippi	01 May 1916	26y 1m	Not shown-6 yrs service	
EDGAR, Walter John	Tacoma WA	24 Feb 1912	19y 6m	Tacoma WA	31 Jan 1912
EDGELEER, William Charles	England	11 Oct 1909	22y 10m	Buffalo NY	14 Jul 1908
EDSON, Sherman	New York	19 Jan 1915	32y 11m	New York NY	05 Sep 1911
EDMONDS, William	Cleveland OH	15 Mar 1912	32y 3m	San Fran CA	30 Nov 1909
EDWARDS, Frank	Topeka KS	13 Jan 1911	22y 9m	Omaha NB	11 Jul 1908
EDWARDS, Franklin George	Wilmington DE	20 Jan 1913	19y 10m	San Fran CA	16 May 1910
EDWARDS, George Austin	Pottawat Co KS	01 Aug 1911	21y 5m	PSNS	29 May 1908
EDWARDS, Henry William	Oklahoma	22 ? 1917	23y 11m	San Fran CA	03 Mar 1914
EDWARDS, James	Jackson MS	11 Dec 1911	23y 3m	Seat'l WA	17 Aug 1911 USMC
EDWARDS, John	New York	10 Jun 1906	25y 8m	Seat'l WA	25 May 1906 USMC
EDWARDS, Oscar	Wisconsin	31 Dec 1915	30y 10m	PSNS	03 Mar 1915
EGAN, Edgar Lesley	California	17 Dec 1915	18y 2m	San Fran CA	03 Jun 1915
EGERTON, Fred Wiggins	North Carolina	28 May 1917	27y 6m	Portland OR	15 Mar 1917
EGGEMAN, Chris Herman	New York	27 Mar 1917	18y 9m	L Ang CA	19 Jun 1916 USMC
EGGLESTON, John Edward	Washington	26 Oct 1913	5y 8m	Child (multiple burns)	
EHLERS, John Henry Fred	Minnesota	29 Jun 1917	18y 8m	Minneapolis MN	17 Apr 1917
EIFLER, Albert	Brooklyn NY	24 May 1910	25y 7m	New York NY	31 Oct 1906
EILERS, August Johnson Jr.	Texas	19 Apr 1915	21y 9m	Galveston TX	10 Aug 1914
EISELSTEIN, Will	Springfield OH	28 Mar 1910	20y 7m	Pueblo CO	17 Feb 1909
EISENHARDT, Christopher	Philadelphia	14 Jun 1907	24y	New York NY	22 Jun 1904
EITEL, John Joseph	Iowa	05 Jul 1913	27y 8m	Portland OR	28 Dec 1909
EKLUND, Oscar	Finland	10 Aug 1906	26y 8m	Duluth MN	27 Apr 1905 USMC
EKSTROM, Emmet Emanuel	Nebraska	15 Apr 1916	23y 5m	Denver CO	02 Oct 1912
ELDRIDGE, Harold Edwin	Rhode Island	15 Feb 1915	22y 10m	Denver CO	22 May 1913
ELIAS, John William	New York	16 May 1914	44y 5m	PSNS	07 Jul 1910
ELIASSEN, Human Harris	Horten, Norway	06 Jun 1910	25y 10m	NY NY	21 Oct 1908 USMC
ELKINS, Loid Jesse	Illinois	09 Jul 1914	26y 1m	Kansas City MO	17 Jun 1914



ELKINS, William John	Pennsylvania	28 May 1915	23y 9m	Salt L City UT	25 May 1915
ELLIFSEN, Laurie Helmar	Lawler IA	17 Dec 1912	28y 10m	Bemidji MN	12 Jan 1911 USMC
ELLIOTT, Arthur	Colorado	28 Sep 1916	21y 4m	PSNS	25 Jul 1913
ELLIOTT, Colin Walter	Lancaster VA	23 Jun 1913	24y 4m	Baltimore MD	08 Feb 1911
ELLIOTT, Frank	Buffalo NY	29 Jul 1912	23y 9m	Buffalo NY	16 Feb 1909
ELLIOTT, James	Port Carbon PA	15 May 1903	31y 8m	PSNS	02 May 1903 USMC
ELLIOTT, James Earl	New York	29 Jun 1914	25y 3m	Butte MT	26 Jun 1914
ELLIOTT, Lester Ben	Union OR	15 Jul 1911	24y 10m	Portl'd OR	21 May 1911 USMC
ELLIOTT, Ray E.	Iowa	27 May 1913	23y 1m	Pueblo CO	16 Jun 1911 USMC
ELLIS, Edward Murray	Pine Ridge SD	14 Aug 1908	23y 6m	Baltimore MD	06 Apr 1906
ELLIS, Grover Valentine	California	10 Nov 1913	22y 8m	Los Ang CA	04 Jun 1912 USMC
ELLIS, Holly	Fayettev'l WV	06 Feb 1912	24y 3m	Akron OH	18 Aug 1909
ELLISON, Walter Williams	New Jersey	02 Jun 1914	18y 7m	Denver CO	23 Jul 1913
ELSBERRY, Roy	Alderson ?	10 May 1909	26y 5m	Sacramento CA	25 Nov 1905
EMANUEL, Maurice	St August'n FL	13 Jul 1912	23y 9m	Salt Lk C'y UT	15 Jul 1910
EMIG, Walter	Missouri	17 Nov 1913	24y 3m	Newport RI	18 Jul 1911
EMMONS, George R.	Ohio	19 Aug 1916	28y	San Fran CA	06 Nov 1913
EMSLEY, Harry George	Kansas	13 Feb 1916	26y 6m	USS Charleston	27 Oct 1914
ENGEL, Ernest Alfonso	Detroit MI	06 Oct 1909	29y 8m	Mare Isl CA	14 Jun 1909
ENGELGAU, Herbert Dennis	Lemars IA	16 Apr 1908	24y	Detroit MI	23 May 1906
ENGLEBERTH, Chalmer	Pennsylvania	29 Aug 1916	26y 2m	Not shown	
ENGLISH, William Leland	Tennessee	06 May 1913	28y 7m	PSNS	16 Jan 1913
ENGMAN, Charles F.	NJ or NY?	15 Feb 1915	54y 9m	Not shown	
ENOS, John Rudolph	Livermore CA	29 Oct 1903	17y 6m	San Fran CA	17 Jun 1902
EPPS, George Walker	Missouri	11 Dec 1913	26y 10m	Kansas City MO	20 Dec 1909
ERB, Ernest Lee	Michigan	18 Jun 1917	18y 10m	Seattle WA	28 Apr 1917
ERDMAN, William Frederick	Germany	12 Apr 1916	26y 9m	Detroit MI	22 Apr 1913
ERICKSON, Walter Leon	Colorado	14 Apr 1915	32y	San Fran CA	23 Dec 1913
ERLANDSEN, Jacob	Norway	20 Jun 1917	27y 3m	Seattle WA	18 Jun 1917
ERVING, Frank	Illinois	18 Dec 1914	26y 2m	San Diego CA	30 Sep 1913
ERWIN, Willard	Pennsylvania	28 May 1917	17y 3m	Salt Lk Cy UT	10 May 1917
ESAU, George	Odessa, Russia	12 Feb 1912	23y 5m	Boise ID	25 Jul 1910 USMC
ESCH, Ernest Joseph	Oregon	15 Nov 1916	17y 3m	Portland OR	05 Aug 1916
ESPEY, Hugh	Aurora IL	23 Oct 1909	40y 3m	Mare I CA	29 Oct 1908 USMC
ESPINA, Victor	Iloilo, Phil.	03 Mar 1908	26y 9m	New York NY	26 Sep 1904
ESSLINGER, Thomas Howard	Mississippi	13 Jan 1914	28y 5m	Kansas City MO	14 Sep 1910
ESTEE, Edward Willard	California	23 Nov 1916	18y 2m	San Fran CA	06 Mar 1916
ESTES, Milton Taylor	California	17 Feb 1914	24y 9m	San Fr CA	08 Mar 1910 USMC
ETHRIDGE, Sammuel Barney	Mississippi	18 Oct 1916	23y 8m	Dallas TX	10 Aug 1916
ETTER, Charles Kohler	Chambersb'g PA	31 Jul 1909	22y 5m	Pittsburgh PA	25 Jul 1908
ETZELL, George Arthur Jr.	Minnesota	07 Jan 1915	25y	Kans City MO	10 Dec 1914
EUBANKS, Alfred Reuben	California	02 Sep 1914	26y 6m	PSNS	06 Oct 1913
EUSS, John Rudolph	Livermore CA	19 Oct 1903	17y 6m	San Fran CA	17 Jun 1902
EVANS, Ada E.	South Dakota	25 Jun 1917	20y 7m	Medford OR	29 Mar 1917
EVANS, Arthur Herbert	California	02 Mar 1916	20y 10m	San Fran CA	29 Sep 1913
EVANS, David Edward	Jackson Co OH	14 Oct 1911	23y 6m	Omaha NB	18 Jun 1909
EVANS, Edward John	Denver CO	15 Apr 1912	22y	Seattle WA	07 Mar 1912
EVANS, Frederic Lewis	Pennsylvania	17 Sep 1915	25y 8m	PSNS	23 Oct 1912
EVANS, George Olen	Greenfield IA	15 Mar 1912	20y 7m	Kans City MO	19 Dec 1910
EVANS, Henry Oliver	Washington	21 Mar 1917	28y 9m	Seattle WA	03 Mar 1917
EVANS, Joel Clements	New Jersey	02 Oct 1912	52y	Appointed	07 Feb 1889
EVANS, Newton Raymond	Illinois	10 Jun 1914	25y 4m	Chicago IL	23 Aug 1910
EVANS, Thomas	Pennsylvania	17 Nov 1914	48y 2m	Chicago IL	03 May 1911
EVANS, Thomas William	San Fran CA	17 Dec 1912	28y 6m	San Fr CA	09 Sep 1909 US.
FAHEY, Michael Francis	Wahpeton SD	05 Jan 1908	23y 2m	Minn MN	19 Dec 1907 USMC
FAHEY, Robert Joice	West Virginia	09 Apr 1913	23y 1m	PSNS	24 Jul 1912



## KITSAP COUNTY PROBATES

SURNAME	GIVEN NAMES	FILE #	MONTH	DAY	YEAR
BEST	Edgar J.	7011	Dec	14	1942
BIESTERFELDT	John H. or J.H.	7066	Feb	09	1943
BENEGAR	Ivary H.	7081	Feb	24	1943
BJORNSTAD	Iver & Emma	7091	Mar	04	1943
BALL	Sadie	7170	May	03	1943
BOWES	James R.	7208	Jun	09	1943
BLAIR	Ruby Marie	7243	Jul	12	1943
BUCKLEY	Edwin Wallace	7244	Jul	12	1943
BURGER	Samuel J.	7291	Aug	09	1943
BROWN	Mary Milroy	7297	Aug	12	1943
BLACK	Loral D.	7315	Aug	30	1943
BEARD	John W.	7319	Aug	30	1943
BYRNE	William Joseph Murray or William J.M. or Wm. J.M.	7324	Sep	13	1943
BREKKE	Inga	7331	Sep	17	1943
BOZARTH	William N.	7357	Oct	05	1943
BAILEY	Ray	7359	Oct	08	1943
BROWN	William B.	7404	Nov	15	1943
BIRNBAUM	Martina or EISENBRAUM	7409	Nov	22	1943
BROBECK	Walter D.	7475	Jan	10	1944
BRYSON	C.R.	7477	Jan	12	1944
BECK	Gus or Gustany	7480	Jan	17	1944
BUCKLEY	Eugene Adelaide	7539	Mar	06	1944
BREECHER	Hester	7541	Mar	08	1944
BOMSTAD	Clara	7580	Apr	17	1944
BEHREND	Mable P.	7584	Apr	20	1944
BERG	Elias	7604	May	15	1944
BUNCH	Kenneth Walker	7616	May	22	1944
BLOOMER	Edna Neil	7634	May	29	1944
BOUCHARD (see WATSON)	Loretta	7636	Jun	05	1944
BALLARD	John A.	7666	Jun	23	1944
BERG	Louis	7679	Jul	03	1944
BARLLETT	Vernon C.	7708	Jul	31	1944
BLAIR	Alva L.	7728	Aug	14	1944
BJERMELAND	Martha & Martin	7737	Aug	21	1944
BROWN	B.O.	7758	Sep	05	1944
BROWN	Tadwell J.	7767	Sep	11	1944
BARTLESON	Joseph H.	7775	Sep	18	1944
BIGGS Jr.	George Edwin	7864	Nov	13	1944
BARROWS	Albert	7866	Nov	13	1944
BRASEN	Hattie E. & James G.	7873	Nov	17	1944
BURTOS	Charles	7898	Dec	05	1944
CALDERWOOD	John A.	0001	Jan	25	1864
COSTELLO	Thomas	0019	Apr	22	1867
CILLEY	J. Watts	0029	Sep	20	1873
CONDON	John S.	0064	Apr	06	1882
CURTIS	George W.	101C	Sep	12	1889
CLINE	B.M.	101Q	Oct	07	1890
CARLSON	Bertha	101Y	May	08	1891
CLAYSON	W.H.	101aa	May	21	1891
CASSEL	Nancy G.	0107	Jan	06	1892
CARDIFF	David	0157	Jul	17	1895
COLLINS	Thomas	0170	Mar	25	1896
CHARLTON	Thomas	0196	Jan	05	1898



CRANE	Michael	0316	Mar	24	1903
CUNNINGHAM	Peter	0317	Apr	02	1903
CLAFLIN	Arthur	0326	Jun	23	1903
CLOUGH	Chester	0390	Apr	07	1905
COLBURN	Leonard	0393	Apr	19	1905
CHRISTIE	Marie	0398	May	26	1905
CARLISLE	James D.	0407	Jul	24	1905
COCHRANE	Lida	0425	Nov	21	1905
COOK	Isabella O.	0477	Jan	02	1907
COLEMAN	Charles C.	0483	Jan	19	1907
CRAIG	Potter B.	0490	Feb	18	1907
CHRISTENSEN	Lars	0496	Mar	23	1907
CLARK	Ralph	0526	Jul	26	1907
CHADWICK	John	0532	Aug	21	1907
CHAMBERS	Katherine D.	0543	Nov	04	1907
CHRISTOFFERSON	Else	0555	Feb	20	1908
COLLINS	Martha J.	0560	Apr	10	1908
CURRY	Maggie M.	0576	Jul	13	1908
CHALLMAN	Charles	0580	Aug	28	1908
CARLSON	Frank	0595	Nov	28	1908
COWAN	Sarah A.	0618	Apr	17	1909
CARLSON	Frank	0631	May	17	1909
CLEMENTS	Aaron E.	0643	Jul	21	1909
CHICO	William	0695	Feb	23	1910
CROWTHERS	James H.	0707	May	07	1910
CHALLMAN	Charles	0730	Jul	29	1910
CARLSON	Arthur	0777	Apr	19	1911
CARLSON	Swan	0814	Sep	06	1911
CHRISTELAW	James S.	0828	Nov	15	1911
CREIGHTON	William J.	0835	Nov	28	1911
CLARK	Lizzie	0876	Apr	27	1912
CAINE	Edwin W.	0887	Jun	14	1912
CAMPBELL	S. J.	0897	Jul	29	1912
CARSLIN	Andrew	0906	Sep	07	1912
CARMACK	Gilbert M. M. Lafayette	0917	Oct	15	1912
CHRISTOPHERSON	S. C.	0950	Mar	05	1913
CARNEY	Fannie	0956	Mar	18	1913
CURRAN	Patrick	0976	May	08	1913
CORSON	Eli E.	0990	Jun	30	1913
CAMPBELL	George Bennett	1025	Jan	10	1914
COOK	Mina	1085	Jul	07	1914
CARTER	Cora A.	1087	Jul	10	1914
COLLINS	Marietta or Martha	1109	Oct	17	1914
CHESNEY	Sarah E.	1131	Jan	09	1915
CRAFT	William A.	1183	May	15	1915
CRAFT	Mary	1189	Jun	01	1915
CLEVELAND	Wilbur M.	1197	Jun	24	1915
CASE	Leila M.	1207	Jul	17	1915
COMPTON	E. A.	1224	Oct	30	1915
CARLSON	Emelia H.	1260	Feb	23	1916
CAMPBELL	Thomas W.	1311	Aug	05	1916
CAMPBELL	Ed C.	1353	Jan	05	1917
CANDA	Mrs. Wilhelmina	1370	Feb	14	1917
COMINGS	Charlotte	1416	Jul	27	1917
CARSON	Edith	1420	Aug	02	1917
CHRISTENSEN	Kaia	1456	Dec	15	1917



CROWLEY	John	1499	Apr	23	1918
CONWAY	P. J.	1530	Jul	16	1918
CARNEY	J. D.	1537	Aug	10	1918
CRAWFORD	James E.	1551	Sep	21	1918
COX	Hanna	1567	Nov	02	1918
COX	William A.	1589	Dec	31	1918
CROFTS	Thomas H.	1599	Jan	11	1919
CRAWFORD	William Francis	1633	Mar	12	1919
CARLSON	Oscar W.	1670	Jun	17	1919
CARY	William W.	1746	Dec	27	1919
CONROY	Sarah	1747	Dec	29	1919
CLEVELAND	Albert M.	1814	May	19	1920
CARY	Martin	1845	Aug	11	1920
CROSS	T. or Thomas	1874	Oct	05	1920
CHRISTENSEN	Ole	1879	Oct	22	1920
COOMBS	Benjamin B.	1898	Dec	18	1920
CALDWELL	Daniel Sheridan	1919	Jan	18	1921
CARLSON	Otto F.	1926	Feb	07	1921
CLINE	Minerva J. aka Jane	1929	Feb	19	1921
CASSIDA	Harry	1948	Mar	19	1921
CLAUS	Johann R. C.	1949	Mar	22	1921
COOPER	David	1957	Apr	23	1921
COOPY	Julius	1980	Jun	16	1921
COPELAND	Alice E.	2019	Nov	05	1921
CHITWOOD	Sarah Frances	2057	Feb	11	1922
CORNTHWAITE	Miles	2090	May	09	1922
CRAWFORD	Hannah B.	2122	Jul	22	1922
CORSON	Charlotte C.	2142	Sep	02	1922
CARMEN	Clarence	2159	Oct	06	1922
CLOUD	John W.	2180	Nov	20	1922
CUMMINGS	James	2181	Nov	21	1922
CYPHERT	Daniel O.	2197	Jan	02	1923
CHREY	Arthur	2228	Mar	06	1923
CORNTHWAITE	Elizabeth Ann	2245	Apr	09	1923
CLARKE	Wm. H.	2265	May	22	1923
CORDES	Margaret	2296	Aug	25	1923
CODY	Michael	2331	Oct	22	1923
CULLEN	Frank	2353	Dec	03	1923
COHEN or COHN	Jake	2377	Jan	08	1924
CLARK	Matilda F.	2378	Jan	08	1924
CLARK	Pauline	2405	Mar	10	1924
CULP	Charles C., Althea M.	2416	Mar	24	1924
CLOUD	Henry	2434	Apr	28	1924
CROWELL	Edwin E.	2439	May	05	1924
COCANOWER	Annie E.	2454	Jun	02	1924
CHRISTENSON	Dorthea	2467	Jun	24	1924
COLEMAN	Sarah A.	2472	Jul	03	1924
COURTRIGHT	Rosanna J.	2485	Aug	11	1924
CASE	Stella M.	2499	Sep	24	1924
CUDWORTH	Edward Manning	2501	Oct	06	1924
CROSBY	Clarence E.	2524	Dec	02	1924
CALKINS	H. A.	2534	Dec	26	1924
CODER	Betty	2573	Mar	10	1925
CARR	Lillian Dartt	2598	Apr	25	1925
CONGER	George D.	2616	Jun	09	1925





Compu-Pen  
3356 SE. AZALEA  
PORT ORCHARD, WASH  
98365

BULK RATE  
U.S. POSTAGE  
PAID  
PORT ORCHARD, WA  
PERMIT NO. 307

## SIGNERS OF THE DECLARATION OF INDEPENDENCE---WHAT HAPPENED TO THEM?

Have you ever wondered what happened to those men who signed the Declaration of Independence?

Five signers were captured by the British as traitors and tortured before they died. Twelve had their homes ransacked and burned. Two lost their sons in the Revolutionary Army, another had two sons captured. Nine of the 56 fought and died from wounds or the hardships of the Revolutionary War.

What kind of men were they? Twenty-four were lawyers and jurists. Eleven were merchants, nine were farmers and large plantation owners, men of means, well educated. But they signed the Declaration of

Independence knowing full well that the penalty would be death if they were captured. They signed and they pledged their lives, their fortunes and their sacred honor.

Carter Brandon of Virginia, a wealthy planter and trader, saw his

John Hart was driven from his wife's bedside as she lay dying. Their 13 children fled for their lives. His fields and his grist mill were laid waste. For more than a year he lived in forests and caves, returning home after the war to find his wife dead, his children vanished. A few weeks later he died from exhaustion and a broken heart.

ships swept from the seas by the British Navy. He sold his home and properties to pay his debts, and died in rags.

Thomas McKean was so hounded by the British that he was forced to move his family almost constant-

ly. He served in Congress without pay, and his family was kept in hiding. His possessions were taken from him, and poverty was his reward.

Vandals or soldiers, or both, looted the properties of Ellery, Clymer, Hall, Walton, Gwinnet, Heyward, Rutledge and Middleton.

At the battle of Yorktown, Thomas Nelson Jr. noted that the British General Cornwallis had taken over the Nelson home for his headquarters. The owner quietly urged General Washington to open fire, which was done. The home was destroyed and Nelson died bankrupt.

Francis Lewis had his home and properties destroyed. The enemy jailed his wife, and she died within a few months.

Norris and Livingston suffered similar fates.

Such were the stories and sacrifices of the American Revolution.

These were not wild-eyed, rabble-rousing ruffians. They were soft-spoken men of means and education. They had security, but they valued liberty more.

Standing tall, straight and unwavering, they pledged: "For the support of this declaration, with a firm reliance on the protection of the Divine Providence, we mutually pledge to each other, our lives, our fortunes and our sacred honor."

(Reprinted from San Diego GS Newsletter March 1992 via Pasadena GS Newsletter September 1991)