

FAMILY BACKTRACKING
A Publication of the Puget Sound Genealogical Society

QUARTERLY	Volume XV, Number 2	May 1990
PUBLISHED FOUR TIMES A YEAR - FEBRUARY, MAY, AUGUST, NOVEMBER		

TABLE OF CONTENTS

Meetings and Coming Events	21
Query, Membership List	23
Library Page	25
Dating, Preserving and Identifying Old Photographs	26
Naval Hospital Records	32
Kitsap County Marriages	34
Veterans Home Cemetery, Retsil, Wash. (Conclusion).	38

MEETINGS AND COMING EVENTS

The meetings of the Puget Sound Genealogical Society are held on the second Thursday of each month at 7 p.m. The Belfair Chapter meets on the first Tuesday of the month at 1 p.m. at the Timberland Library in Belfair.

May	24	PSGS Library Hours - 12:30 - 3:30 p.m. and 7:00 - 9:00 p.m.
June	5	Belfair Meeting: Trip to Seattle Genealogical Library
	14	PSGS Meeting 7 p.m. Fredi Perry: Kitsap County History (Meeting will be held at 4430 Pine Ave NE, as usual)
July	3	Belfair Meeting: Library Hunt at Timberland Library: How to Use the Library
	12	PSGS Meeting 7 p.m. at Timberland Library in Belfair. Speaker: Jan Stevenson on "Interesting People"
August	7	Belfair Meeting: Trip to Seattle Public Library
	14	PSGS Meeting (Location to be announced)

HALE AND FAREWELL. The June meeting marks the last time PSGS will meet at 4430 Pine Ave. in Bremerton. The club owes an everlasting debt of gratitude to Marlys and Bill Marrs for the years our library and meeting room have been quartered in their basement. Their house is now up for sale, and the time has come for us to move on.

Temporary quarters for the books, readers, microfilm etc. seem to be the answer for now; but in the years to come, there are some exciting possibilities on the horizon. Patience is what we need now. This is a good club (witness the excellent seminar we just had), and with the cooperation and good will of all members it will some day be an even better club, housed in a brand new location.



**GARAGE
SALE**

INFO:
Linnie 275-3770

BRING CONTRIBUTIONS AT LEAST
TWO DAYS BEFORE

MAY

18 | 19

in the
MARRS CARPORT
4430 Pine Ave. NE

The following actions were taken by the membership at the April meeting regarding the revision of the club by-laws:

Article II, PURPOSES

Section 1, Part 4: Voted to delete entire section regarding Federation of Genealogical Societies.

Section 2: Voted to change wording of the last sentence as follows:
"Reimbursement may be allowed for expense of a member to attend other organizational meetings upon prior approval of the membership."

Article III, MEMBERSHIP AND DUES

Section 3 Honorary Membership. Voted to change the wording of the last sentence to "Recommendation is subject to the approval of the Executive board and approval of the majority of members present at a regular meeting."

Article IV, OFFICERS

Section 1. Voted to accept term of membership for eligibility to hold office from twelve months to "at least six months."

Article V, DUTIES OF OFFICERS

Section 4. Voted to change Treasurer's submission of books for auditing from semi-annually to quarterly.

Article VI, EXECUTIVE BOARD.

Voted to table Section 2 until it can be examined by the by-law committee. Duties of Inventory Committee were most prominent in the discussion. Other Sections were accepted.

Article VIII, COMMITTEES

Section 2. Voted to change wording to "All committees shall make reports as requested by the president."

Article X, AMENDMENTS AND PARLIAMENTARY AUTHORITY

Section 1. Entire section tabled until committee returns report of recommendations.

Section 2. Accepted by vote of meeting. Section states, "The rules contained in the current edition of Robert's Rules of Order (revised) shall govern the society in all cases to which they are applicable, and are not inconsistent with this constitution by-laws or any special rules of order the Society may adopt."

Article XII, CHAPTERS OF THE SOCIETY

Section 4. Voted to change term of membership for person assuming office of chapter president from one year to six months.

Article IX, CODE OF ETHICS

Voted to delete this article as it was originally put in the by-laws to comply with membership in Federation of Genealogical Societies.

###

UPCOMING SEMINARS. Two more seminars have been scheduled for the coming year. On September 29th, the Evertons will once again bring their travelling road show to PSGS. On April 13, 1991, the club will once again have the pleasure of hearing Arlene Eakles, of the Genealogical Institute Library in Salt Lake City. Mrs. Eakles is a dynamic speaker and an inspiration to all interested in genealogy.

The recent Schweitzer seminar was pronounced a huge success by those who attended. Lois Roark and her committee are to be commended.

BAKER

Am interested in hearing from anyone with ancestors from Piscataquis County, Maine who traveled to Kitsap County around the 1860's. Am looking for my Baker ancestors who lived in Seabeck WA and may have come from Sebec, Maine.

Theresa Baker, PSC 2 Box 659, APO NY 09220-5300

Nadine Rowan

Nadine T. (Mrs. Paul) Rowan, 81, a longtime resident of Bremerton and formerly an active leader in Girl Scouts, died Tuesday at Resthaven Health Care Center.

She was born Nov. 7, 1908, in San Francisco and married Paul R. Rowan March 16, 1929, in Reno, Nev.

They came to Bremerton in 1942 from Twin Falls, Idaho.

Mrs. Rowan was a homemaker and member of the First United Methodist Church in Bremerton. She also served as a Girl Scout and Brownie leader for years and then worked in the local Girl Scout Council leadership, giving more than 25 years total service to the Girl Scouts of America.

Mrs. Rowan also enjoyed being with her grandchildren and great-grandchildren. She pursued genealogy and liked to work in her

garden.

In addition to her husband, survivors include three daughters, Betty Woods of Port Orchard, Edna Peak of Federal Way and Christine Rowan of Tacoma; nine grandchildren; and seven great-grandchildren.

Memorials may be made to the Girl Scouts of America.

Paul is still at 1543 N. Cambrian.

Nadine and her husband Paul have been members of PSGS for many years.

MEMBERSHIP ADDITIONS:

ANDREWS, Bonnie	5613 Harlow Dr	Bremerton 98312	373-3464
ANDREWS, Ruby	1055 Puget Dr E	Port Orchard 98366	871-7066
CHAFE, Lillis	E 7710 Grapeview Loop	Allyn WA 98524	275-5185
DOWELL, Deanna L.	6195 Silver Beach Dr NW	Bremerton 98310	479-1189
FOLEY, Pat	5691 Kitsap Way	Bremerton 98312	377-1002
LIBBY, Doris	3121 Rocky Point Rd	Bremerton 98312	377-2287
MYER, Charlene	E 1521 Mason Lake Dr E	Grapeview WA 98546	426-2917
WILBUR, Idaleah	PO Box 222	Belfair WA 98528	275-6186

KAREN GLASSER. The five-year-old daughter of Lani Glasser who belonged to PSGS from 1984 to 1986 died recently in Pittsburgh PA while awaiting a heart transplant at the Children's Hospital there. She was born April 9, 1984 in Bremerton where the family lived from 1981 to 1986. Three weeks before her death, the Make-A-Wish foundation sent Karen and her family to Disney World. Memorial services were in Kirkland where the family now lives.

NORTH DAKOTA RESEARCH. Housed in the Heritage Center building on the state capital grounds in Bismarck, the State Historical Society is open Mon. through Fri. 8 a.m. to 5 p.m. Address is State Archives and Historical Research Library, 612 E. Boulevard Ave., Bismarck ND 58505. Available are federal censuses for ND plus state census records for 1885, 1915, and 1925. These will be searched for \$1 per household per county and township. Other charges are 10 cents per machine copy page and 25 cents per page from microfilm.

Naturalization records are indexed by county, and plat maps and records of original owners are available via interlibrary loan. In the 1930s the WPA workers copied tax lists which are on file. Interviews with pioneers are available on interlibrary loan. Two researchers are available to assist by mail and will spent approximately 20 minutes per query. Microfilm of newspapers is available on interlibrary loan. There is a photographic collection and orders for reprints are taken.

NEW METHOD FOR RECORDING DATES (from Topeka KS newsletter)

1990 JA 01 using only 8 characters instead of 10 .

Placing the YEAR MONTH DAY in descending order is more suited to computer sorting and no confusion. Computers are being used more frequently thus this may well force the conversion .

Following are the 2 alpha characters representing each of the months.

January	JA	May	MY	September	SE
February	FE	June	JE	October	OC
March	MR	July	JL	November	NO
April	AP	August	AU	December	DE

NORTH CAROLINA RESEARCH. A search and handling fee of \$5 is required for each inquiry about one record or one person's record. Make check payable to NC Dept. of Cultural Resources. Address is NC State Archives, 109 East Jones St., Raleigh NC 27611.

This fee is in addition to copying fees. The Archives reminds researchers they will respond to requests such as: Do you have record of Confederate service for (person) of (---) County? Do you have a marriage bond for (person) of (---) County? Do you have a will or estate record? Does the record of probate of the will of (person) appear in the (---) County court minutes for (-) Term (year)?

Do not ask such questions as: Who were the parents of (person) born in (---) County about (date)? Who were the children of (person)? Ask instead for a will or estate and hope the children will be named there. Never ask the archives to search for brothers and sisters. Do not ask for copy of all wills (or estate records, or marriage bonds, or any other series of records). A definite no-no: Please send me anything you have on (person), (---) County, (dates).

HELP FROM CITY DIRECTORIES.

When looking for relatives who have dropped out of sight in the late 19th or early 20th centuries, city directories can be of great assistance. Although the term city directory refers to city living, it is surprising how many towns had city directories, even before the days of the telephone book. The best place to find such directories is in the library of the town in question. The average genealogical library probably cannot hope to provide a complete collection of them, even for their general area.

The addresses can be located on a map, so that it is possible to work out the cit, ward in question, and narrow the census searches. From this information it is possible to request a search for a death certificate.

QUAKER DATES. Never change the way Quaker dates are recorded, says the Gen. Forum of Oregon. The Quakers reluctantly accepted the change from the Julian to the Gregorian calendar (1751) in the secular world, but in their records they kept their own method of recording dates. Names of months were unacceptable to them because they were of pagan origin.

They agreed that January was the first month of the year (as the Gregorian calendar dictated), but recorded it as "17th, 1 mo. 1749" Christmas, which they refused to celebrate, would have been "25th, 12 mo. 1749."

LIBRARY NEWS

Remember, the hanging file at the librarian's desk contains genealogical bulletins from all over the country. Almost all of them run queries with the surnames prominently displayed. It's a good idea to check each one as someone somewhere may know something about your surnames and is anxious to trade information.

Other valuable sources of information that the club receives regularly are (1) The Second Boat; (2) The Dinghy and (3) Heritage Quest.

NEW GENEALOGICAL PUBLICATIONS

The following books have been published recently and are available from the publishing companies, as noted:

From Genealogical Publishing Co. 1001 N. Calvert, Baltimore MD 21202-3897

"Child Apprentices in America, From Christ's Hospital, London 1617-1778" by Peter Wilson Coldham, \$21.50 + 2.50 S&H. Approx. 1000 names new to researchers.

"Local Scottish History" and "Scottish Family History" by David Moody, \$19.95 each plus \$2.50 S&H.

"A Guide to Irish Churches and Graveyards" and "A Guide to Irish Parish Registers" by Brian Mitchell. \$30 and \$25 respectively plus \$2.50 S&H.

From Ancestry Inc., Contact Sheila Huntington for info, PO Box 538, Salt Lake City UT 84110

"Apprentices of Virginia 1623-1800" by Harold B. Gill Jr. Lists nearly 3000 apprentices. \$16.95 plus \$3.50 S&H.

"The Library of Congress: A Guide to Genealogical and Historical Research" Needed for anyone planning to conduct research at the L of C library. \$39.95 plus \$4.50 S&H.

###

DON'T YOU BELIEVE IT! says an item in the Visalia CA gen soc newsletter: "Despite what you may have read ..., Glad Bags are not the economical solution to preserving your important documents." Glad Bags are not made of Mylar, as has been reported, but polyethylene. Dupont, Mylar's creator, says their product has a lower moisture vapor permeability than plain polyethylene and would "probably be a better choice for long-term storage."

NORWEGIAN-AMERICAN MUSEUM. Located in Decorah IA, the Vesterheim Gen Center is a good place to visit when in the area. The parent organization is the Vesterheim Gen Center in Madison WI. Address genealogical correspondence to Prof. Gerhard B. Naeseth, 4909 Sherwood Rd., Madison WI 53711. (Ephrata WA gen soc)

NATIONAL ARCHIVES. Write for a free 28-page catalog for a guide to the NA vast collection of federal records, instructions for obtaining copies of NA records etc. Write National Archives Trust Fund Board, Publications Services, Room 1W1, Washington DC 20408. (Ephrata WA gen soc)

"Gentility is what is left over from rich ancestors after the money is gone" - John Ciardi

DATING AND PRESERVING PHOTOGRAPHS

Family photographs of past generations can be used successfully in genealogical research. Old photographs are not only a part of a family's heritage, but are also a record of a way of life now vanished. It is, therefore, important to identify and preserve these pictures for future generations.

Before the mid-1800's only the affluent could afford portraits of family members, but the invention of photography (literally, "light writing") made pictures cheaper and easier to obtain. Almost every family has photographs of their ancestors dating back several generations. These deserve serious treatment.

Although the clarity of some of these old photographs is amazing, many of them are not dated or identified. With careful study it is usually possible to determine the decade in which a picture was made, and knowing the approximate date often helps to identify the person portrayed in the photograph.

Observe all clues in the photograph. First, determine the type of photographs. Backdrops, scenery, frames, borders and picture mounts all aid in dating a photograph. Clues to the age of a picture also can be found in the fashion of the clothes, hats, hairstyles, type of furniture, architecture, modes of transportation, if shown (horse, wagon, car, etc.). An excellent example of dating a photograph by studying styles of clothing will be found following this article. These illustrations were used with the kind permission of the Victoria County, Texas Genealogical Society.

TYPES OF PHOTOGRAPHS

1. The DAGUERRETYPE (ca 1840-mid 1860's) was a shiny image on a silver-clad metallic plate, visible only in certain lights. Daguerreotypes, delicate and easily damaged, were covered with glass and put into a variety of cases, usually expensive, covered in embossed leather, tortoise shell, velvet, papier mache, etc. Many of these were inlaid with gold, silver or mother-of-pearl. "Union cases", made in the U. S. of layers of shellac and various other materials that could be easily shaped, were the first commercial use of thermoplastic material. Although many thousands of "Union cases" were made, because of their brittleness, few have survived undamaged.

The cost of a daguerreotype, while cheaper than a portrait, was about \$5.00, a week's wage for a working man. Some were colored or tinted; some were made into jewelry; some were given a three dimensional effect by installing a magnifying glass in the case.

Millions of daguerreotypes were taken in the U. S. and Europe - in studios in the cities and by itinerant daguerreotypists who roamed the countryside. Many of these are in good condition, but untold numbers were melted down to reclaim the silver used in processing them or were destroyed in attempts to clean the tarnished silver from the surface.

Historical collections contain daguerreotypes of famous people and common folk, of Indians, ships, buildings and landscapes. The Civil War, and many of the men who fought its battles, were photographed by MATTHEW BRADY.

2. The CALOTYPE (ca 1841-1854) produced a "negative", but required a long time to process the picture. The fragile photograph was enclosed in a case. Calotypes never attained the popularity of daguerreotypes, and are, therefore, rarer.

3. The AMBROTYPE (ca 1854-1865) was an image produced on glass, and can be identified by the red or black lacquer, paint, velvet or paper attached to the

back of the photograph. An Ambrotype was very fragile and was enclosed in a case for protection. The cost was approximately half that of a daguerreotype, although a small ambrotype could be purchased for 25-50 cents. It had the advantage of being visible in all lights, and replaced the daguerreotype and the calotype.

4. The TINTYPE (ca 1850-1915), also known as the melainotype (meaning "black") and the ferrotype (meaning "iron") was a photograph on a thin sheet of metal. Although more durable than the more costly daguerreotypes and ambrotypes, tintypes were easily scratched, and were usually encased or put into albums, although some were found loose. Tintypes varied in size, some of them being as tiny as 3/4 of an inch long, while others were as large as 8 x 10 inches. They also varied in price, costing as little as a penny each for small ones and as much as several dollars for the larger ones. The lower cost brought photographs in reach of all but the very poor.

Tintypes were used in all types of jewelry - rings, bracelets, medallions and even suspender clips. ABRAHAM LINCOLN was the first to use his photograph (a tintype) on campaign buttons, and the novelty was said to have influenced his election.

Post-mortem tintypes were very popular with the Victorians. Tintypes of the deceased were often put on tombstones and were used in mourning jewelry. Tintypes were taken in great abundance, and may survive in good condition.

5. The CARTES de VISITE (ca 1860-1910) were the first paper photographs and became the most popular form of portrait photography. The name is a French term meaning "visiting card", but it is unlikely they were ever used for that purpose, although they were exchanged or presented on special occasions such as birthdays and family reunions. The speed of production and the low cost made the cartes de visite very popular. Eight small photographs were produced, mounted on cardboard to form a card about 2 1/4 x 4 inches in size, selling for 25 to 50 cents each.

The cartes de visite did not need to be covered by glass, and may or may not have been framed. The mania for the cartes de visite caused millions of them to be produced, and enterprising photographers issued portraits of royal families, athletes and other celebrities for sale. Cartes de visite were traded, collected, and displayed in special albums in Victorian parlors.

6. The CABINET CARD (1863-1906) usually sat on a mantel and were a larger version of the cartes de visite, being about 4 1/2 x 6 1/2 inches in size. The larger size of the photograph revealed the blemishes and defects on people, so new skills in posing and techniques in retouching photographs were demanded. The Cabinet cards cost about \$3.50 per dozen, and the backs of the cards advertised the photographer's studio. Cabinet cards can be dated by card colors, and kinds of borders and corners on the photographs.

7. The POST CARD PHOTOGRAPH (1905-1930) were inexpensive and appeared in great numbers. Subjects on post cards were portraits, homes and landscapes.

PRESERVATION OF PHOTOGRAPHS

Caring for and preserving old photographs requires special care. Consult books on the subject or a professional photographer for specific problems.

1. If an old photograph needs restoring or recopying, choose a reputable and experienced photographer.

2. Photographing through glass will rarely produce good results. Carefully remove the glass before photographing and take precautions for future preservation.
3. Use only acid-free mats on pictures. Be sure the photo does not touch the glass, or moisture will result and harm the picture.
4. Keep daguerreotypes out of direct sunlight, which will cause chemical changes and will cloud the glass covering it.
5. Use only acid-free plastic to encase your pictures. The acid in ordinary photographic albums will fade and destroy photos.
6. Do not attempt to clean or polish a daguerreotype. Cases may be carefully cleaned.
7. Although little can be done to restore or clean an ambrotype, it is sometimes possible for an expert to replace the cracked or damaged backing with a piece of black matt paper.
8. Do not attach photographs to paper with rubber cement. This will stain the picture.
9. Store photographs in acid-free boxes, made for this purpose. They come in a variety of sizes and are effective barriers against dust and other pollutants.
10. Use lint-free cotton gloves to handle oil photographs. Oils and other chemicals on hands will cause damage.
11. Never laminate photographs. Lamination is irreversible; the heat used in the process and the acid in the plastic are both damaging to the picture.
12. Do not write on pictures with a ball point pen.
13. Take some snapshots with black-and-white film. Although the color process has been improved, colored photographs will usually not last for future generations.

VICTOR MONSOUR, of Monsour's Photographic Studio, offered the following information on caring for photographs.

1. Keep all photographs away from direct sunlight. The heat and ultraviolet rays will increase the aging process and make the photograph very brittle.
2. Do not smoke around valuable photographs or paintings. Nicotine destroys the pictures.
3. Write on photographs only with a China marker, a wide black crayola-type of marker found at office supply stores.
4. Tintypes, which tend to darken with age, can be photographed to reproduce the portrait.
5. Having an old photograph reproduced in sepia, brown, gold or silenium tones (rather than black and white) gives the appearance of an older photograph and often increases its life.

IDENTIFICATION OF PHOTOS

Take time to identify all your photographs, old and new. Do not depend on memory. Time passes quickly and the snapshots, slides, movies and video tapes you took only yesterday may be impossible to identify in years to come.

Give information such as names, places, dates and family relationships on all photos. Tell if the picture was taken on a special occasion, such as a birthday.

On old photographs, do not assume that the city named on the photographer's label was the place your ancestor resided. Although this is a clue worth checking, it is likely that the city mentioned was merely the headquarters of the photographer's firm, since roving photographers took most of the early pictures.

The efforts you make to identify, date and preserve photographs and other memorabilia will turn them into family heirlooms for the future.

Sources of information:

- GILBERT, GEORGE, Photography: The Early Years, N. Y., Harper & Rowe, 1980
- HOWARTH-LOOMES, B. E. C., Victorian Photography, N. Y. St. Martin's Press, 1974
- NEWHALL, BEAUMONT, The Daguerreotype of America, Greenwich, Conn., N. Y. Graphic Society, 1968.
- POLLACK, PETER, Picture History of Photography, N. Y., HARRY N. ABRAMS, Inc., 1958.
- RINHART, FLOYD and MIRIAM, American Daguerreian Art, N. Y., CLARKSON N. POTTER, 1967.
- "Victoria-Crossroads of South Texas", Vol. VIII, NO. 3, Fall 1987, Victoria County, Texas Genealogical Society.
- "The Wagoner", Vol. VI, No. 2, Fall 1983, The NorthWest Genealogical Society, Alliance, Nebraska
- Louisiana Library Association Bulletin, Vol. 49, No. 1, Summer 1986
- MONSOUR, VICTOR, Monsour's Photography, Lake Charles, La.

PHOTOGRAPH DATING BY WOMEN'S DRESS

Identifying the time period in which a photograph was taken can often be achieved by studying women's dress. The following are guidelines which can be used to do this. Of course, these are only guidelines and will often be varied from.

CODE to use with illustrations:

- | | | | |
|--------------|-----------------|--------------|---------------------|
| 1 Hair Style | 3 Shoulder-line | 5 Waist-line | 7 Other Information |
| 2 Collar | 4 Sleeves | 6 Skirt | |

We are indebted to "Victoria-Crossroads of South Texas", Vol. VIII, #3, Fall 1987, for sharing this information with us.



1848 - 1853

- 1 Center Part
- 2 No Collar
- 3 Very Low
- 4 Very Tight
- 5 Low, Pointed
- 6 Soft, Full
- 7 Bonnets Not Uncommon

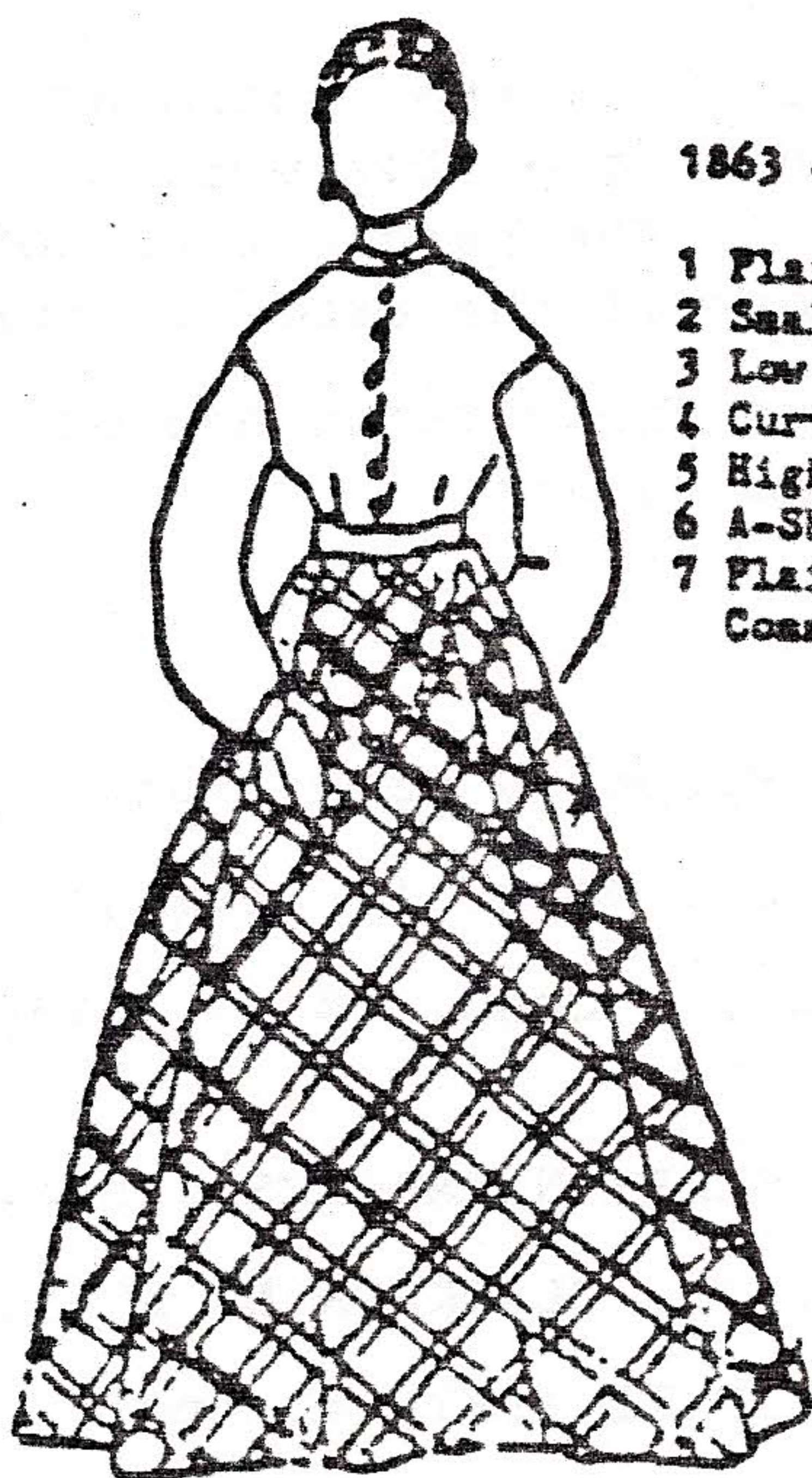
1854 - 1862

- 1 Center Part
- 2 Small
- 3 Very Low
- 4 Wide
- 5 Round
- 6 Very Full
- 7 Front Waist Gathered, Over Hoops



1871 - 1876

- 1 Fancy, High
- 2 Added Trim
- 3 Somewhat Low
- 4 Large Cuffs
- 5 High, Jacket
- 6 Bunched Bustle
- 7 Much Jewelry, Elaborate Dress



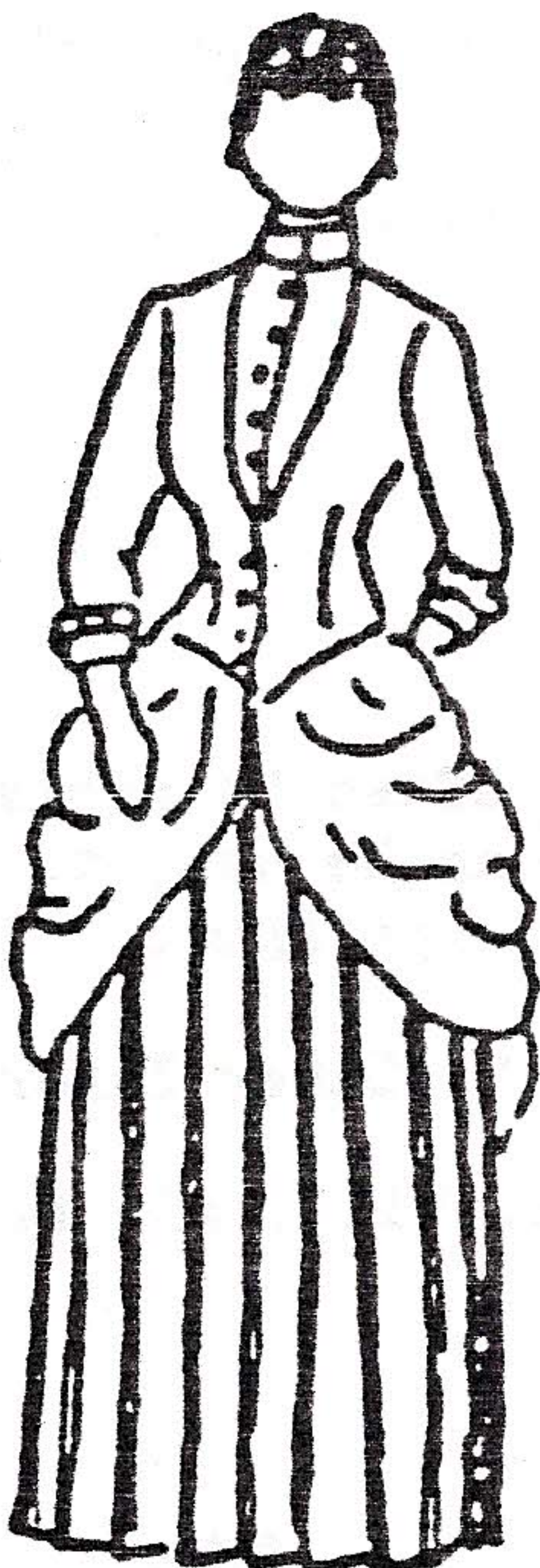
1863 - 1870

- 1 Plain, Center Part
- 2 Small
- 3 Low
- 4 Curved
- 5 High, Round
- 6 A-Shape, Flat
- 7 Plaid Fabric Very Common



1877 - 1881

- 1 Center Part, Frizzed
- 2 Low
- 3 Normal
- 4 Large Cuffs
- 5 Long; Princess
- 6 A-Shape; Train
- 7 Fabric Trim Often Big

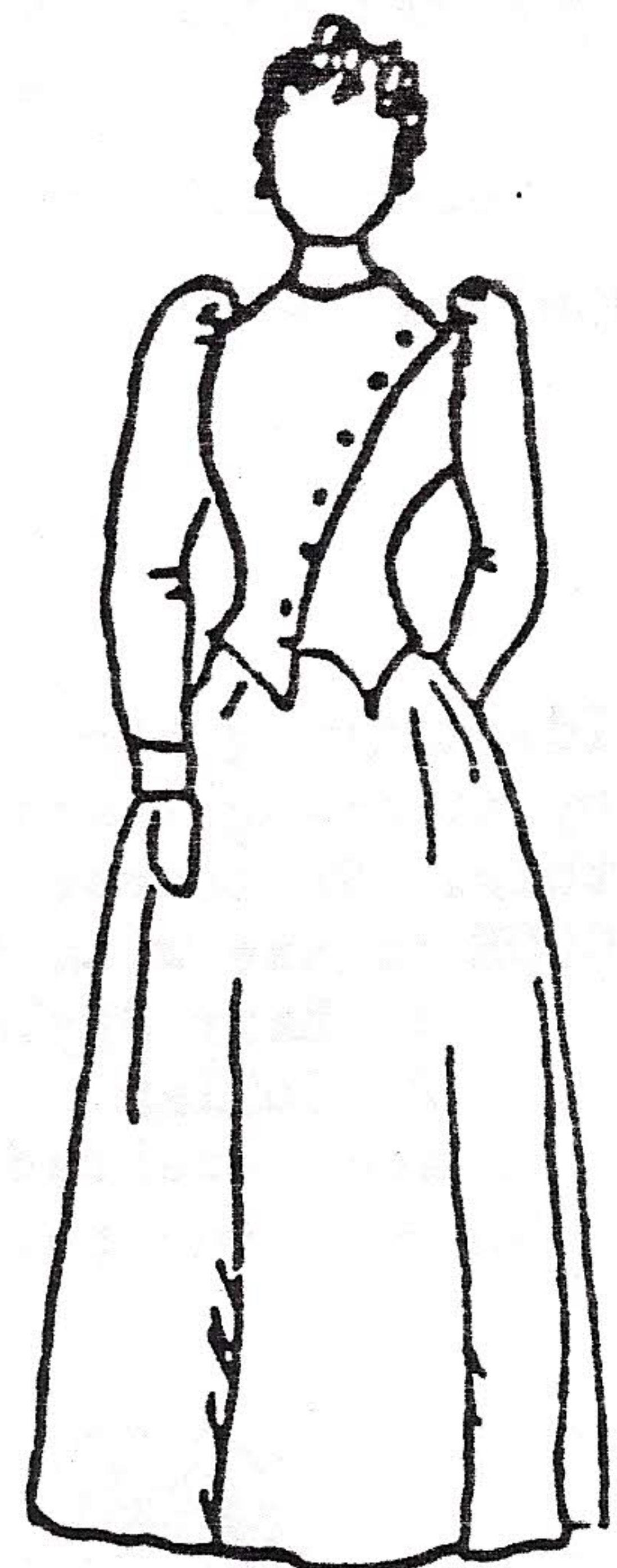


1882 - 1888

- 1 Plain With Bangs
- 2 Medium
- 3 Very High
- 4 Very Tight, Short
- 5 Pointed; Jacket
- 6 Draped, Bustle
- 7 Two Fabrics Often Used, Often Heavy; Skirt Pleated

1889 - 1893

- 1 Plain Or Frizzed
- 2 Medium High
- 3 Very High
- 4 "Kick-Ups"
- 5 Jacket-Style
- 6 Plain, Round
- 7 Generally Simple Overall

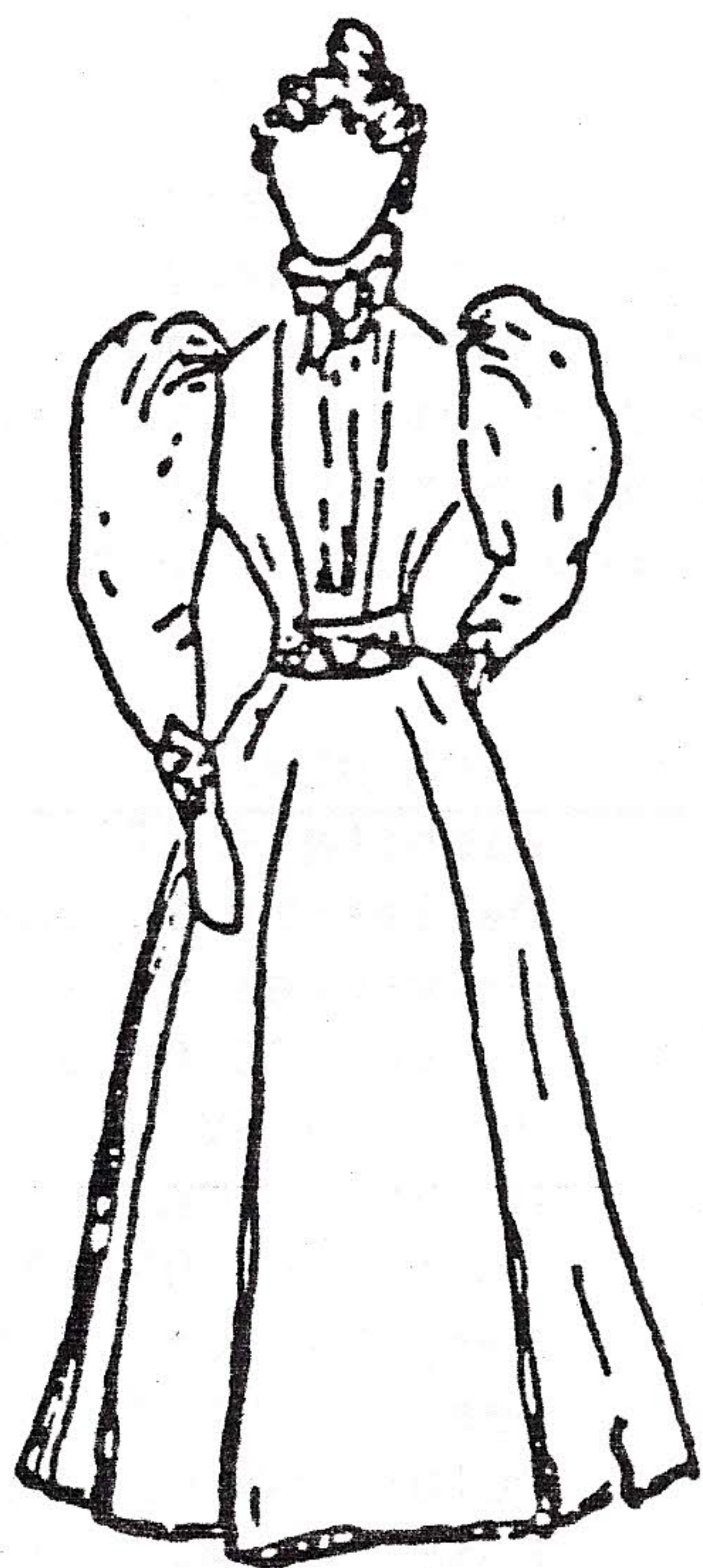


GENEALOGICAL IMPORTANCE OF LAND RECORDS

1. In early rural America nearly every adult male can be found in land records.
2. Land records are one of the few records that exist uninterrupted from early settlement to present.
3. Older land records contain more genealogical data than modern ones.
4. Land records are among the most accurate and reliable records available.
5. Land records have been totally indexed over a long period of time.

HOW LAND RECORDS ARE COMMONLY INDEXED

1. Alphabetically by first letter of surname only.
2. Alphabetically by first letter of surname; then alphabetically by first name.
3. Alphabetically by first letter and first vowel of surname.
4. Alphabetically by first letter of surname and first key letter (l,m,n,r,t).
5. In any index there are special pages for surnames common in a county.
6. Also check under both "Sheriff" and surname of the sheriff (check county history for this) as much land was sold by the sheriff for taxes.



1894 - 1898

- 1 Simple, Frizzed
- 2 High
- 3 High, Wide
- 4 Very Full At Top
- 5 Round, Tight
- 6 Plain, A-Shape
- 7 Tailored Style,
Shirtwaists Come In



1899 - 1906

- 1 Pompadour
- 2 Very High
- 3 Normal
- 4 Loose At Cuff
- 5 Low, Swayed
- 6 Flared, Gored
- 7 Light Fabrics
White Common



1907 - 1913

- 1 Wide, Soft
- 2 Medium To High
- 3 Normal
- 4 Straight
- 5 Normal To High
- 6 Slim, Plain
- 7 Short Or Long Sleeves;
White Very Popular



GOWEN FOUNDATION. Do you have the name Gowen, Goen, Goin or Goyen in your ancestry? From the mountains of eastern Tennessee? Many people having these surnames are descendants of the Melungeons whose history is nothing short of fantastic. The Melungeons are non-Negroid persons of dark complexion who settled in those mountains long before Daniel Boone and other hunters arrived. They have sharp-aquiline features and blue eyes.

It is thought these people were either descendants of Portugese sailors wrecked off Cape Hatteras in the 1500's or deserters from DeSoto's 1539 expedition. Another theory is they are descendants of Carthaginians who escaped to Portugal when their city fell to the Arabs in 698 A.D. Ross and Sellers are also common surnames among these people.

Additional information can be obtained from the Gowen Research Foundation, 5708 Gary Ave., Lubbock TX 79413. (NW La. GS)

ROOTS? The National Opinion Research Center at the University of Chicago reports: 24% of all white Americans come from German or Austrian stock, 21% from England, Scotland or Wales, 14% from Ireland, 7% from Italy, 7% from Scandinavia, 4% from Hispanic nations, 4% from Poland, 3% from France, 3% Native Americans, 2% each from Netherlands, Czechoslovakia, Russia and Canada. The question remains, what about all of us who are a mixture of the above?

EPITAPH: "The dust of Melantha Gribbling, swept up at last by the Great Housekeeper."

NAVAL HOSPITAL RECORDS

These records from the old Naval Hospital at Puget Sound Naval Shipyard (PSGS) were first begun in the August 1986 Family Backtracking. They were continued in August 1987 and in May 1988. Ages listed are for exact date each man was admitted to the hospital. Anyone interested in obtaining birth dates should contact the club as records on file show the date of admittance, and approximate birth dates can be figured from these records. The records date from 1900 to World War I.

NAME	AGE	BIRTHPLACE	ENLISTMENT
BENSON, William Moor	22y 9m	Phillipsburg KS	Wichita KS 20 Dec 1907
BENTLEY, Archie	21y 3m	Texas	Dallas TX 30 Jan 1917
BENZ, Paul Herman	24y 3m	Berlin, Germany	Milwaukee WI 14 Sep 1905
BEQUETTE, Charles	42y 7m	Richwood MO	Denver CO 01 Jul 1908
BERBACK, Anthony	20y 11m	Tonawanda NY	Buffalo NY 06 Jun 1908
BERG, Louis Marcus	33y 7m	Denmark	San Fran CA 16 Jan 1906
BERGSTROM, John	48y 6m	Pennsylvania	Portsm'th NH 13 Jun 1914
BERGSTROM, Walter R.	25y 2m	Kansas	Mare Isl CA 11 Oct 1913
BERRY, John Parker	25y 7m	Otto NC	Seattle WA 08 Feb 1907
BERTELSON, Orten	38y 9m	Ptord, Norway	Duluth MN 02 Dec 1909
BESSLER, William	42y 2m	Pennsylvania	PSNS 20 May 1914
BERTRAND, Emile Joseph	33y 9m	California	
BETT, Herbert Marion	26y 7m	Florida	Kans Cty MO 08 Jun 1912
BETTINGER, John Marcus	23y 6m	California	Los Ang CA 12 Nov 1912
BETZ, Gilbert Frank	20y 8m	St Louis MO	New York NY 17 Mar 1908
BEVARD Jr., Wm Henry	21y 5m	Kansas	Denver CO 17 Jul 1916
BEVIER, Frank Lofland	24y 2m	Ohio	Cleveland OH 03 Sep 1909
BEVIER, Grover Cleveland	21. 1m	Ann Arbor MI	Detroit MI 16 Sep 1905
BEWLEY, William S.	17y 5m	Texas	Okla City OK 11 Apr 1917
BEYERSTEDT, Werner Fred.	20y 7m	Texas	Dallas TX 28 May 1912
BIANCHI, Francis Joseph	26y 2m	Indiana	PSGS 16 Apr 1917
BIASTAFF, Henry George	26y 1m	Belfast Ireland	Norfolk VA 23 Jul 1907
BIBBS, John George	19y 6m	England	Chicago IL 23 Nov 1912
BICKFORD, Arthur John	23y 1m	Detroit MI	Tacoma WA 06 Mar 1903
BIDDLE, Jerome Vincent	24y 10m	Philadelphia PA	Phila PA 21 Dec 1907
BIESENBACK, Gustave Alb't	21y 6m	San Antonio TX	Dallas TX 21 Mar 1911
BIGGERS, Earl Gordon	23y	Texas	Dallas TX 05 Oct 1915
BIGHAM, John Emanuel	26y 3m	Roseville OR	Ft Wayne IN 03 May 1906
BILIK, Stefan	32y 2m	Hungary	Chicago IL 31 Mar 1908
BILL, Frank Calvin	23y 10m	Nevada	Hoquiam WA 25 Jun 1910
BILLS, Arthur George	20y 9m	Washington	Portland OR 12 Jan 1915
BILLSON, Oscar William	21y 2m	Chicago IL	Seattle WA 09 Oct 1907
BINION, Mark John	28y 10m	Clarkston GA	San Pedro CA 01 Sep 1910
BIRD, Chester Bailey	22y 5m	Nebraska	Toledo OH 30 Nov 1912
BIRD, John Alexander	25y 1m	Oklahoma	Dallas TX 26 Mar 1915
BIRD, Michael Joseph	46y 9m	Ireland	Mare Isl CA 19 Jan 1907
BISCIUNAS, Anthony Chas.	20y 8m	Maryland	Chicago IL 31 Jul 1911
BISHOP, Herman Edwin	26y 3m	Iowa	SLC Ut 02 Apr 1917
BISHOP, James Hoyt	18y 11m	Edensville MI	Toledo OH 24 May 1909
BITSKEY, Paul Louis	21y 4m	Edeley Hungary	NYC NY 03 Jun 1907
BIXLEY, Harry Lewellyn	21y 4m	Long Beach CA	
BJERKEN, Carl Magnus	29y 3m	North Dakota	St Paul MN 12 Dec 1913
BLABON, Irving Howard	21y 6m	Oakdale CO	Mare Isl CA 10 Apr 1909
BLACK, George Seth	25y	Muresburg PA	Pitts PA 05 Oct 1907
BLACK, Lamar	26y 5m	Illinois	Chicago IL 09 Jul 1910
BLACKBURN, Joseph	29y 6m	Norfolk VA	Indianap IN 18 Nov 1903

BLACKER, Earl Clyde	25y 9m	Colfax IN	Dallas TX 14 Mar 1912
BLACKWELL, Harley Orin	20y 2m	Kentucky	Denver CO 13 Sep 1913
BLACKWELL, Harry Oscar	20y 3m	Kentucky	Denver CO 13 Sep 1913
BLADORN, Herman	23y 3m	Chicago IL	Kan City MO 03 Sep 1907
BLAKE, James	31y 2m	Albany NY	Boston MA 01 Aug 1904
BLAKE, John	59y 1m	Providence RI	Retired 15 Aug 1912
BLAKE, William	34y 8m	Boston MA	San Fran CA 02 Jun 1910
BLANCHARD, Lester Gibbon	21y 1m	Fresno CA	San Fran CA 08 Apr 1908
BLANKENSHIP, Walt. Roscoe	21y 10m	West Virginia	Minn MN 08 Aug 1911
BLAS, Domingo	24y 11m	Guam	Agana Guam 02 Sep 1913
BLAS, Jose	18y 9m	Guam	Agana Guam 20 Aug 1915
BLASINO, Wm Carl Robert	26y 3m	Eau Claire WI	St Paul MN 03 Apr 1912
BLATTAN, Harry Lee	22y	St Louis MO	St Louis MO 14 Feb 1908
BLATTNER, Ralph John	29y 3m	Weir City KS	Denver CO 14 Feb 1908
BLAUVELB, George Russell	31y 9m	New York	
BLEAM, Charles	29y 10m	Kansas	Charl'ton SC 01 Apr 1911
BLEILER, Carroll	21y 8m	Philadelphia PA	Bremerton WA 04 May 1904
BLITON, Mildred	21y 6m	Oregon	Medford OR 29 Mar 1917
BLODGETT, Jed George	24y 4m	St Louis MO	San Fran CA 14 Feb 1906
BLOKER, Harold	17y 9m	Penns lvania	Milwaukee WI 18 Apr 1917
BLOMBERG, Hardey	23y 8m	Sweden	Seattle WA 29 May 1917
BLOODGOOD, Claude Taylor	18y 9m	Colo Springs CO	Kans City MO 07 Jun 1910
BLOOMER, Arthur	25y 4m	Caseyville IL	Bremerton WA 06 May 1903
BLOOMQUIST, Edward Ernest	21y 6m	Omaha NB	NY 02 Feb 1911
BLOSAT, Arthur Paul	23y 1m	Germany	Portland OR 08 Nov 1907
BLUMENTHAL, Irving	19y 7m	Indian Territory	NY 21 May 1907
BOB, Fred Cleveland	26y	San Fran CA	Mare Isl CA 16 Mar 1909
BOBBITT, Harry Elsworth	19y 2m	Nebraska	Seattle WA 13 Apr 1917
BOEN, Edward	19y 5m	Cincinnati OH	Cincinnati OH 17 Sep 1902
BOESCH, Michael John	20y 5m	Brooklyn NY	New York NY 09 May 1908
BOETTIGER, Walter Willie	19y 6m	Milwaukee WI	Milwaukee WI 28 Jul 1911
BOGGS, LeRoy	18y 4m	Nebraska	Omaha NB 26 Jan 1912
BOGIES, James	28y	Turkey	
BOHNSACK, George	22y 8m	Toledo OH	Cleveland OH 27 Jun 1907
BOHR, Arthur Otto	18y 9m	San Francisco CA	San Fran CA 12 Aug 1902
BOKINGER, William Field	25y 8m	Michigan	Toledo OH 10 Jun 1909
BOLDT, Konrad Henry	29y 4m	Germany	New York NY 20 Oct 1911
BOLES, Elmer Leighton	21y 6m	Oregon	Portland OR 18 May 1917
BOLES, George Thomas	29y 9m	Indiana	Chicago IL 05 Jan 1910
BOLES, George William	26y 11m	Iowa	St Louis MO 11 Nov 1914
BOLGRIEN, Alvin Fred Wm.	18y 10m	Wisconsin	Milwaukee WI 22 Jun 1913
BOLLARD, Walter Delafield	33y 6m	Kittaning PA	Vallejo CA 16 Jan 1903
BOLLER, John Franklin	25y 10m	New Jersey	Newark NJ 04 May 1912
BOND, William Genden	48y 7m	New York	Honolulu HI 16 Mar 1914
BONDS, Charles Rufus	19y 11m	Texas	Denver CO 04 Feb 1916
BONDS, John Pruitt	22y 6m	Birmingham AL	Waco TX 28 Aug 1902
BONDY, Roy Willard	24y 4m	Battle Lake MN	04 Dec 1911
BONHAM, Raymond A.	18y 3m	Colorado	Gt Lks IL 12 Apr 1917
BONNEMAISON, Toney	22y 10m	San Antonio TX	New Orlns LA 25 Jan 1904
BONUS, Baltazar	18y 5m	Philippines	Cavite PI 29 Apr 1914
BOODY, Eugene Wilbur	23y 4m	Iowa	Mare Isl CA 11 Nov 1912
BOOGARD, Ids Peter	21y 1m	Holland	
BOOKER, Everett	24y 6m	Union Co TN	PSNS 03 Jun 1909
BORCHERS, Louis Selmar	40y 7m	Germany	Mare Isl CA 20 Jul 1909
BORG, David William	24y 5m	Michigan	Seattle WA 02 May 1917
BORIS, Samuel David	24y	Dillonvale OH	Cleveland OH 21 Oct 1908

KITSAP COUNTY MARRIAGE RECORDS 1860-1915 (Cont.)

JOHN ARTHUR GODFREY, age 30, white, druggist
Resident of Seattle; native of Georgia
Son of Jno J. Godfrey and Jeanette Collier

Mrs. ALMA SOPHIA CARLSON, age 31, white
Resident of Seattle; native of Sweden
Daughter of Carl Carlson and Minnie Anderson

Marriage Performed by: Rev. Fred M. McCreary. Place: Poulsbo, Wash.

Date: 31 Dec 1907, license date 31 Dec 1907; groom's first marriage, bride's second

Witnesses: Mrs. Kate Scheuerman and Mrs. Jane Wright

STEPHEN BUNKER, age 59, white, merchant
Resident of Bremerton; native of Canada
Son of Robert Bunker and -- Harris

PHOEBE HUMBLE, age 50, white
Resident of Bremerton; native of New Brunswick
Daughter of David Humble and -- Copp

Marriage Performed by: Rev. O.S. Barnum. Place: Bremerton, Wash.

Date: 08 Jan 1908, license date 08 Jan 1908; first marriage for both

Witnesses: Martin Ek of Bremerton and Elizabeth Gordon

MARSHFIELD LAFAYETTE HEDGE, age 50, white, farmer
Resident of Port Blakley; native of Missouri
Son of Isaac Hedge and Mary Jane Deloebin

CHRISTINA C. GILCHRIST, age 45, white, housekeeper
Resident of Port Blakley; native of Canada
Daughter of William Gilchrist and Annie Drew

Marriage Performed by: Rev. Roland Hughes. Place: Port Orchard, Wash.

Date: 18 Dec 1907, license date 18 Dec 1907; first marriage for both

Witnesses: W.A. McLeod and Mrs. Shriner

JAMES MITCHELL, age 21, white, nurse
Resident of Bremerton (U.S. Navy); native of Michigan
Son of J. Mitchell and Elizabeth Batcher

GABRIELLE BUNCE, age 19, white, waitress
Resident of Bremerton; native of Washington
Daughter of B.A. Beattie and Ellen Bisher

Marriage Performed by: D.C. Bleam JP. Place: Port Orchard, Wash.

Date: 23 Jan 1908, license date 23 Jan 1908; groom's first marriage, bride's second

Witnesses: Mrs. R.D. Cruckshank and K.S. Farnum

C. L. PETERS, age 33, white, machinist's helper
Resident of Manette; native of Missouri
Son of W.C. Peters and -- Brockman

FRANCIS M. MILLER, age 24, white, housekeeper
Resident of Manette; native of Missouri
Daughter of Geo. W. Miller and -- Hallford

Marriage Performed by: J.W. Martin JP. Place: Manette, Wash.

Date: 29 Jan 1908, license date 28 Jan 1908; groom's second marriage, bride ?

Witnesses: John W. Peters and J.C. Case of Manette

GEO. F. GAVITT, age 41, white, druggist
Resident of Seattle; native of Washington
Son of James A. Gavitt and Elizabeth H. Blanpied

IDA E. FORAN, age 36, white, housekeeper
Resident of Seattle; native of Washington
Daughter of J.F. Donohob and Frances Singleton

Marriage Performed by: Rev. Frank R. Gillett. Place: Port Orchard, Wash.

Date: 10 Feb 1908, license date 10 Feb 1908; second marriage for both

Witnesss: H.H. Morris and Mrs. Mary Morris of Port Orchard

RALPH T. McMILLIN, age 25, white, safe business
 Resident of San Francisco, Calif.; native of Rockville, Ind.
 Son of William L. McMillin and Sibyl Hobbs
 MABEL E. JONES, age 24, white, housekeeper
 Resident of San Francisco; native of Chicago, Ill.
 Daughter of Cullen Jones and Ella Silkwood
 Marriage Performed by: Rev. Frank R. Gillett. Place: Port Orchard, Wash.
 Date: 15 Feb 1908, license date 15 Feb 1908; first marriage for both
 Witnesses: W.A. McLeod and Mrs. Frank R. Gillett of Port Orchard

WALTER O. SHATTUCK, age 36, white, farmer
 Resident of Port Orchard; native of Clifton, Ill.
 Son of Orrin Shattuck and Julia E. Pelcher
 LOUISE M. JOHNSON, age 27, white, housekeeper
 Resident of Port Orchard; native of Sweden
 Daughter of John Johnson and Anna Carlson
 Marriage Performed by: Rev. Frank R. Gillett. Place: Port Orchard, Wash.
 Date: 23 Feb 1908, license date 21 Feb 1908; groom's second marriage, bride's first
 Witnesses: Howard J. Shattuck and Mrs. T. M. Bartlett of Port Orchard

ROY A. TESHERA, age 24, white, salesman
 Resident of Bellingham, Wash.; native of Vancouver, Wash.
 Son of Joe E. Teshera and Mary Coubberson
 Mrs. S. ALICE REICHWEIN, age 29, white, housewife
 Resident of Bellingham; native of Pittsburgh, Pa.
 Daughter of J.A. Keish and Margaret Krice
 Marriage Performed by: John B. Yakey, Judge Sup. Ct. Place: Port Orchard, Wash.
 Date: 27 Feb 1908, license date 26 Feb 1908; groom's first marriage, bride's second
 Witnesses: W.A. Greenway of Seattle and J.T. Watson

HARRY SIGLER, age 27, white, streetcar conductor
 Resident of Seattle; native of Germany
 Son of J.A. and Alice Sigler
 LOUISE E. WILLIAMS, age 20, white, housekeeper
 Resident of Port Blakley; native of Port Madison, Wash.
 Daughter of George and Margaret Williams
 Marriage Performed by: T.H. Lewis, Minister. Place: Port Blakley, Wash.
 Date: 10 Mar 1908, license date 07 Mar 1908; groom's second marriage, bride's first
 Witnesses: Lester Welfare and Mary E. Williams of Port Blakley

JOHN E. LINDALL, age 22, white, boilermaker's helper
 Resident of Port Orchard; native of Minnesota
 Son of A.J. Lindall and Anna Anderson
 NANCY BURROUGHS, age 18, white, housekeeper
 Resident of Port Orchard; native of Oregon
 Marriage Performed by: Rev. Frank R. Gillett. Place: Port Orchard, Wash.
 Date: 14 Mar 1908, license date 14 Mar 1908; first marriage for both
 Witnesses: Mrs. Annie Lindall and Tilda Lindall of Port Orchard

RALPH O. HOUGHTON, age 24, white, restaurant business
 Resident of Tacoma; native of Charlevoix, Mich.
 Son of Edgar P. Houghton and Elizabeth Nessleton
 KATHLEEN ELIZABETH CRAWFORD, age 21, white, housekeeper
 Resident of Bremerton; native of Millbanks, S.D.
 Daughter of W.F. Crawford and Hannah B. Smith
 Marriage Performed by: Rev. Oats. Place: Bremerton, Wash.
 Date: 01 Mar 1908, license date 25 Feb 1908; first marriage for both
 Witnesses: Ethel G. Crawford and Claude Denny of Bremerton

T. J. THORNTON, age 32, white, foreman in woods

Resident of Poulsbo; native of Texas

Son of Jack Thornton and Mary Oneail

MARGIE D. KENNEDY, age 17, white

Resident of Poulsbo; native of Minnesota

Daughter of Frank H. Kenney and Julia A. Palan

Marriage Performed by: Rev. Chs. Mohn. Place: Poulsbo, Wash.

Date: 02 Mar 1908, license date 01 Mar 1908; first marriage for both

Witnesses: C.E. Darlyample and A.J. Ferrin

CHARLES ELLIS, age 28, white, farmer

Resident of Silverdale; native of Washington

Son of Abraham Ellis and -- Henry

GRACE MARTINDALE, age 17, white

Resident of Tracyton; native of Wisconsin

Daughter of Edward Martindale and -- Banta

Marriage Performed by: Rev. O.S. Barnum. Place: Tracyton, Wash.

Date: 22 Apr 1908, license date 13 Apr 1908; first marriage for both

Witnesses: Mary H. Martindale and Carl Wm. Avenell

CHARLES R. McINTOSH, age 28, white, machinist

Resident of Seattle; native of California

Son of John McIntosh and -- Browur

WINNIE BLISS, age 18, white

Resident of Bremerton; native of Oregon

Daughter of Frederick Bliss and -- Smith

Marriage Performed by: Rev. O.S. Barnum. Place: Bremerton, Wash.

Date: 19 Apr 1908, license date 18 Apr 1908; first marriage for both

Witnesses: George Edw. Selleman of Seattle and Nellie A. Boyle of Bremerton

WM. WOLLENZIN, age 23, white, clerk

Resident of Bremerton; native of Cleveland, Ohio

Son of Christian Wollenzin and Katherine Jorndt

RUTH WIERSDALE, age 18, white, housekeeper

Resident of Bremerton; native of Wisconsin

Daughter of Nicholas J. Wiersdale and Caroline H. Annudsen

Marriage Performed by: Rev. Harry Hudson. Place: Bremerton, Wash.

Date: 22 Apr 1908, license date 20 Apr 1908; first marriage for both

Witnesses: A.C. Goodenough and Ida Wiersdale of Bremerton

JOSEPH E. FLAVIN, age 28, white, sheetmetal worker

Resident of Port Orchard; native of New York

Son of John Flavin and -- Francis

MARTHA TUFTELAND, age 23, white, waitress

Resident of Port Orchard; native of Minnesota

Daughter of Nels Tufteland and Elie Olson

Marriage Performed by: Rev. Harry Huson. Place: Bremerton, Wash.

Date: 19 Apr 1908, license date 18 Apr 1908; first marriage for both

Witnesses: Mr. and Mrs. M.J. Saunders of Bremerton

WILLIAM DAVID MONTEITH, age 35, white, farmer

Resident of Dillsboro, N.C.; native of North Carolina

Son of John A. and Sara A. Monteith

ELLA LEE ALLEN, age 31, white, teacher

Resident of Silverdale, Wash.; native of North Carolina

Daughter of Henry Ervin and Sara Elizabeth Allen

Marriage Performed by: C.J. Granquist. Place: Pearson, Wash.

Date: 08 Apr 1908, license date 04 Apr 1908; first marriage for both

Witnesses: Geo. W. Allen of Silverdale and Jessie F. Ogilvy

GEORGE GOTTLIEB MELHART, age 35, white, mechanical engineer
 Resident of Burley; native of Germany
 Son of Michael Melhart and Theresa Overmeir
 JESSIE VONNIE PORTER, age 25, white, school teacher
 Resident of Burley; native of Kansas
 Daughter of Frank Horton Porter and Catherine Duncan
 Marriage Performed by: Rev. Arthur B. Ellis. Place: Burley, Wash.
 Date: 05 May 1908, license date 04 May 1908; first marriage for both
 Witnesses: Rachael M. Baker and A.T. Copeland

JULIUS W. IVERSON, age 21, white, seaman
 Resident of Bremerton; native of Minnesota
 Son of Iver U. Iverson and Sina Rosland
 ANNIE L. GIBSON, age 22, white, housekeeper
 Resident of Sheridan, Wash.; native of Minnesota
 Daughter of Wm. J. Gibson and Agnes Bridge
 Marriage Performed by: Rev. H.P. Waldron. Place: Sheridan, Wash.
 Date: 28 Apr 1908, license date 28 Apr 1908; first marriage for both
 Witnesses: Geo. Reeve and Midgie Gibson

W. J. CAREY, age 40, white, bookkeeper
 Resident of Tacoma; native of England
 Son of Thos. Carey and Emma Cox
 OLLIE A. WILSON, age 30, white, stenographer
 Resident of Tacoma; native of Kansas
 Daughter of Henry Wilson and Anna Peterson
 Marriage Performed by: D.C. Bleam JP. Place: Port Orchard, Wash.
 Date: 03 May 1908, license date 02 May 1908; first marriage for both
 Witnesses: Ray Cruckshank and H.W. Bleam

KLAAS NICOLAI, age 54, white, farmer
 Resident of Everett, Wash.; native of Holland
 Son of Cornelius Nicolai and Dina Bravinboer
 JOHANNA C. DUINDAM, age 40, white, housekeeper
 Resident of Oak Harbor, Wash.; native of Holland
 Daughter of Jacob Duindam and Catrina M. Vander-meer
 Marriage Performed by: Frank R. Gillett. Place: Port Orchard, Wash.
 Date: 20 May 1908, license date 20 May 1908; groom's first marriage, bride's second
 Witnesses: Riekele Zylstra of Oak Harbor and Mrs. H.E. Gillett of Port Orchard

REUBEN P. MOODY, age 25, white, streetcar man
 Resident of Seattle; native of North Carolina
 Son of Robert C. Moody and Clarisse Colwell
 OLIVE S. WHEELER, age 18, white, clerk
 Resident of Seattle; native of Chicago, Ill.
 Daughter of Sam J. Wheeler and Mary Friebeheiser
 Marriage Performed by: Frank R. Gillett. Place: Port Orchard, Wash.
 Date: 20 May 1908, license date 20 May 1908; first marriage for both
 Witnesses: Robert H. Cline and Mrs. H.E. Gillett of Port Orchard.

ALBERT LEMPKE, age 36, white, electrician
 Resident of Bremerton; native of Germany
 Son of Wm. Lempke and Amelia Selman
 CARRIE WILLMS, age 27, domestic
 Resident of Seattle; native of Minnesota
 Daughter of Matt Willms
 Marriage Performed by: Judge John B. Yakey. Place: Port Orchard, Wash.
 Date: 21 May 1908, license date 21 May 1908; first marriage for both
 Witnesses: Herman Lemke and Edith Krohn of Bremerton

VETERANS Home Cemetery, Retsil, Wash.

Row 106 (Continued)

VERNON MANSKER
Pfc US Army WW 2
b. 15 Jun 1915
d. 6 Mar 1980

MICHAEL W. DUNCAN
Pfc US Army WW 2
b. 10 Feb 1908
d. 11 Oct 1982

MARY CLARE DUNCAN
Wid. of Ernest Ora Duncan
b. 18 Aug 1887
d. 14 Feb 1980

CHARLES WILLIAM BROWN
BM2 US Navy WW 2
b. 24 Jun 1908
d. 2 Sep 1979

ASTOR HUFFMAN
Pfc US Army WW 1
b. 8 Aug 1895
d. 26 Aug 1978

FREDERICK A. GILLETTE
1st Lt US Army WW 1
b. 23 Aug 1894
d. 8 Feb 1979

CARL WALLER
Pvt US Army WW 1
b. 10 Oct 1879
d. 25 Jun 1978

THOMAS JEFFERSON BENNETT
Pvt US Army WW 2
b. 5 Oct 1920
d. 22 Nov 1977

CHARLES AVERY NELSON
Sgt US Army WW 1
b. 24 Mar 1885
d. 23 May 1976

GLEN WILLIAM PARKINS
F1 US Coast Guard
b. 1 Dec 1925
d. 25 Jan 1976

WILLIAM WALTER BAILEY
Pvt US Army WW 1
b. 26 Aug 1889
d. 12 Jan 1976

ELWIN BRYAN BLUE
Sgt US Army WW1
b. 5 Dec 1898
d. 31 Jul 1975

Row 107

JACK B. GOODELL
Pvt US Army
b. 4 May 1894
d. 25 Apr 1981

CLIFFORD A. REANIER
Pvt US Army WW 2
b. 12 May 1917
d. 6 Oct 1980

GEORGE EDWARD HOLLAR
Pfc US Army WW 1
b. 7 Dec 1894
d. 1 Aug 1980

JAMES M. PEDERSON
Cpl US Army WW 2
b. 13 May 1925
d. 22 May 1980

BENJAMIN OSTRANDER
Pfc US Army WW 2
b. 28 Apr 1901
d. 16 Jan 1980

WILLIAM H. OLSEN
Cpl US Army WW 2
b. 29 Aug 1904
d. 8 Nov 1979

WILLIAM J. SWARTZ
Tec 5 US Army WW 2
b. 20 May 1901
d. 27 Jun 1978

ELLIS T. BLOMSTROM
CY US Navy WW 2
b. 18 Sep 1908
d. 11 Sep 1980

JOHN E. GRAVER
Pvt US Army WW1
b. 19 Feb 1895
d. 2 Dec 1977

JOHN ABRAHAM EMPOLEN
SFC US ARMY WW 1, 2,
Korea
b. 3 Jun 1903
d. 18 Dec 1976

ELIZABETH GATES
Wid. of Joseph L. Gates
b. 31 Dec 1894
d. 6 Jan 1976

Row 108

JOHN E. McBRIDE
Pvt US Army WW 2
b. 27 May 1903
d. 26 May 1983

OSCAR A. ROSE
Pvt US Army WW 1
b. 30 Nov 1886
d. 25 Jun 1981

WANDA LUCILLE ROSE
Wife of Oscar A. Rose
b. 1 Dec 1921
d. 7 Mar 1983

CHARIE M. HILL
Pfc US Army WW 2
b. 16 Feb 1917
d. 14 Nov 1980

DONALD FOREST ARTHUR
Pvt US Army WW 2
b. 3 Jan 1915
d. 19 Jan 1980

EDWARD H. MEEKS
Pvt US Army WW 1
b. 9 Aug 1897
d. 24 Dec 1978

Row 108 cont.

DONALD ANDREW REYBURN
Pfc US Army WW 1
b. 29 May 1897
d. 15 Sep 1979

HOWARD NEAL GODSEY
SSgt US Army
b. 20 Dec 1907
d. 20 Jun 1978

OSCAR P. CHRISTENSEN
Pvt US Army WW 1
b. 23 May 1899
d. 20 Sep 1976

FRED SEALS
Pvt US Army WW 2
1906-1977

ESTHER LAURE JOHNS
Wid. of Thomas Newton Johns
b. 20 Sep 1899
d. 21 Jun 1976

Row 109

RICHARD FRANKLIN SMITH
Tec 4 US Army WW 2
b. 29 Nov 1914
d. 20 Oct 1981

LEE A. WYCKOFF
Sgt US Army WW 1
b. 31 Aug 1891
d. 17 Nov 1980

AUGUST HAKANSON
Pvt US Army WW 1
b. 28 Feb 1894
d. 22 May 1980

ANDREW WILLIAM REYNOLDS
Pvt US Army WW 2
b. 26 Feb 1902
d. 16 Nov 1979

DELBERT L. CRESS
Pvt US Army WW 1
b. 30 Oct 1890
d. 1 Apr 1979

SVETLANA ZARA BARRETT
b. 30 Dec 1913
d. 15 Jul 1978

ERWIN H. LIVELY
TSgt US Army WW 2
b. 7 Dec 1912
d. 6 May 1979

JOHN HAAST
Tec 4 US Army WW 2
b. 18 Mar 1899
d. 20 Nov 1980

ROBERT LEWIS MATLOCK
Pfc US Army WW 2, Korea
b. 25 Aug 1929
d. 20 Aug 1983

HOMER THOMAS WILSON
Pvt US Army WW 2
b. 24 May 1910
d. 30 Aug 1983

VERNON LESLIE CAIN
US Navy WW 1
b. 8 May 1900
d. 27 Dec 1977

LEVI E. MONROE
Sgt Army Air Forces WW 2
b. 8 Apr 1914
d. 20 Sep 1976

Row 110

ELMER E. MATSON
Pfc US Army WW 2
b. 1 Jun 1915
d. 30 May 1981

ALBERT T. THOMPSON
Sgt US Army WW 1
b. 2 Oct 1895
d. 8 Jul 1890

PETER A. SANDLIE
Pvt US Army WW1
b. 29 Jul 1895
d. 15 Jan 1980

WILLIAM ERNEST SAVAGE
Sgt US Army WW 1
b. 2 May 1890
d. 14 Feb 1979

CATHERINE M. SAVAGE
Wife of William Savage
b. 1 Mar 1892
d. 21 Sep 1979

PETER G. KNUTSON
Pvt US Army WW 1
b. 27 Oct 1892
d. 21 Jun 1978

JOHN ARVID FORSMARK
Pvt US Army WW 1
b. 5 Oct 1895
d. 13 Jan 1980

OLIVE L. KOSTER
Army Nurse Corps WW 1
b. 25 Apr 1885
d. 2 Apr 1980

DONALD K. HARTLIEB
Pvt US Army WW 2
b. 7 Mar 1924
d. 20 Mar 1980

WILLIAM HENRY GRIFFITHS
Pvt US Army WW 1
b. 27 Nov 1888
d. 24 Mar 1980

MARY PELTON
Wife of George Pelton
b. 7 Oct 1896
d. 18 Feb 1979

THOMAS J. SHEEHAN
Pfc US Army WW 2
b. 22 May 1899
d. 11 Feb 1977

JAMES JESSE O'BRIEN
Pvt US Army WW 1
b. 28 Aug 1892

(This ends the records for the Retsil Cemetery)



Compu-Pen.

Return address

3356 S.E. Azalea
Port Orchard, WA 98366

BULK RATE
U.S. POSTAGE
PAID
PERMIT #6
MANCHESTER
WA

DOCUMENTING MARRIAGES. This list was published in the Visalia CA Gen Soc bulletin, and was taken from an address at a DAR conference.

1. Certified copy of marriage record from civil sources.
2. Church records.
3. Eye witness to the ceremony.
4. Family records in continuous family possession.
5. Admissions in court records, written or oral, usually found in miscellaneous records in recorder's office.
6. Common law or general reputation. States where common law marriages are valid: AL, DC, GA, ID, IA, KS*, OH, OK*, PA, RI, SC, TN, TX. (*License required.)
7. Civil court records in rights of dower and courtesy.
8. Probate records.
9. Criminal court records.
10. Land records.
11. Military records.
12. Published and unpublished genealogies.
13. Census records of 1850, 1860, 1870, 1880 (must have two consecutive records).
14. Cemetery records.
15. Vital records (birth records).
16. Newspapers (must be dated).
17. Insurance records.
18. Records and publications of lodges etc.
19. Death certificates.
20. Parents' names on children's marriage license application.
21. Joint tombstones.
22. Contemporary letters.
23. Dated artifacts: samplers etc.
24. Divorce records.
25. Immigration records.