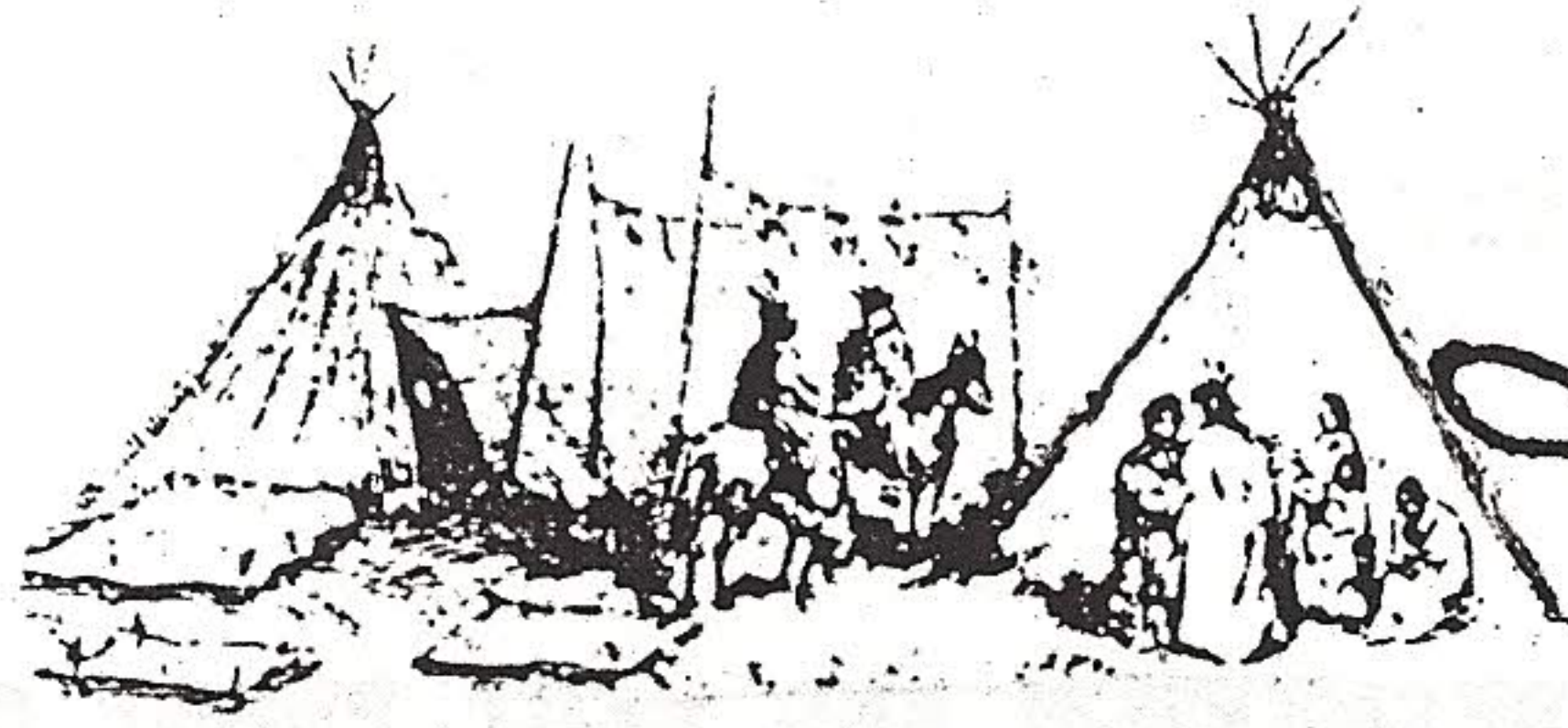


ISSN 0735-682X

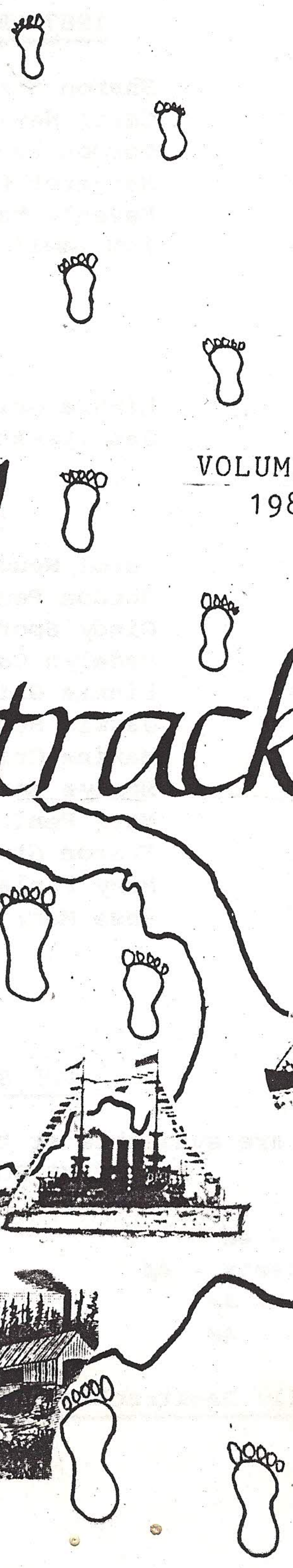
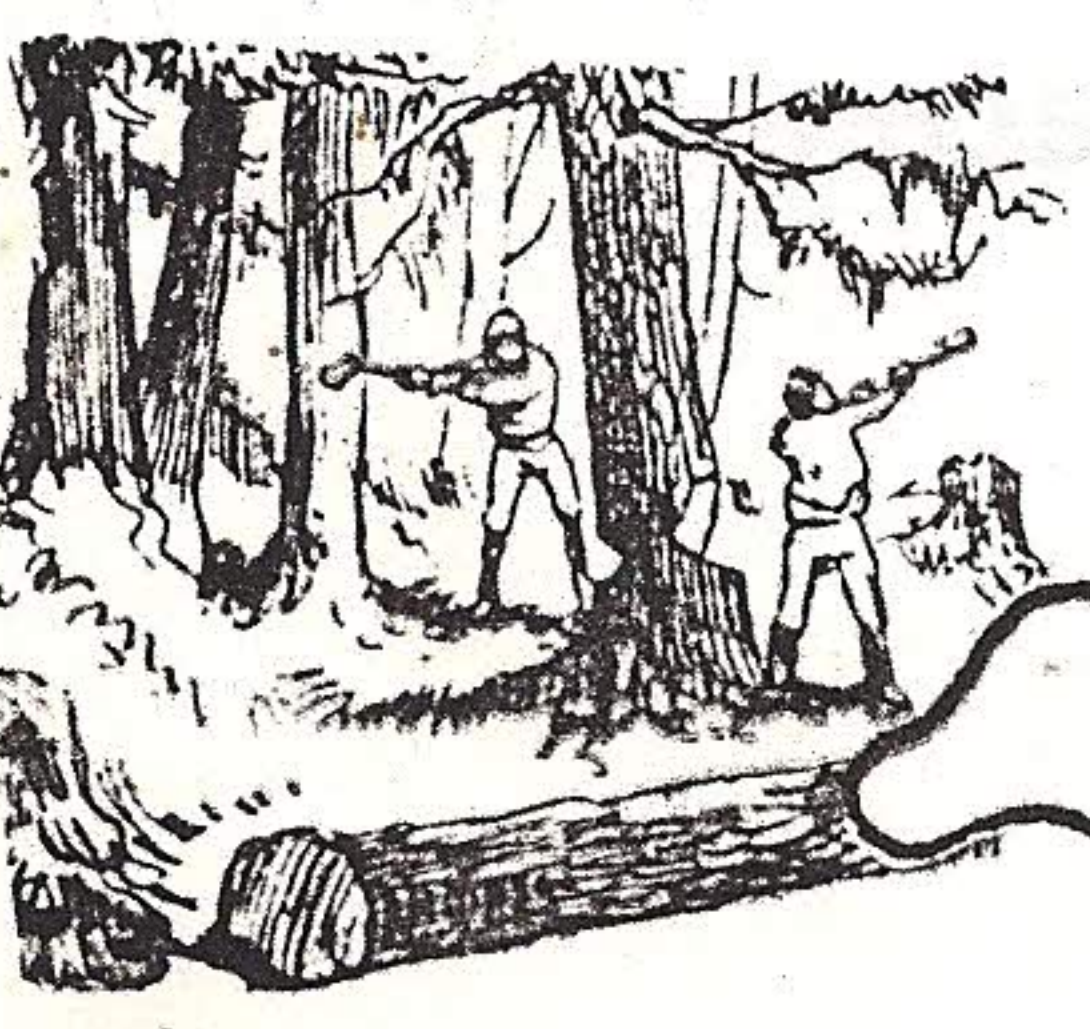
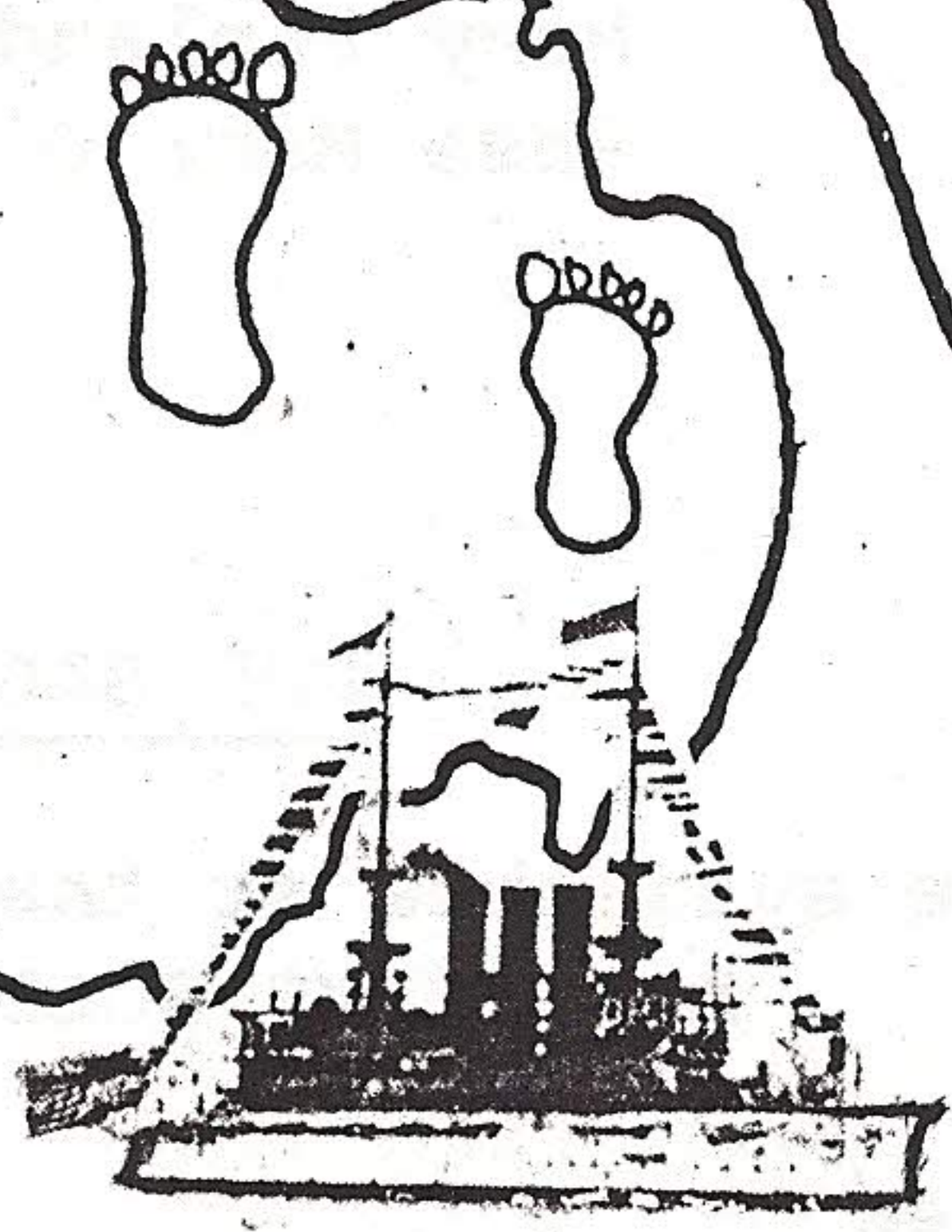
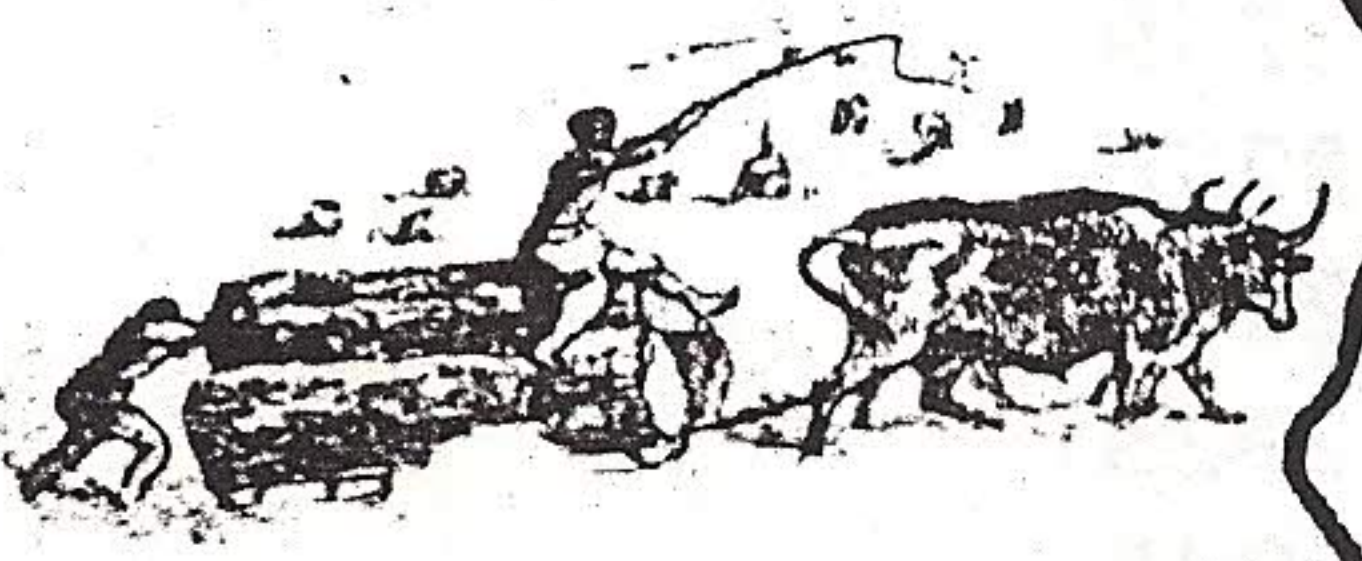


Puget Sound  
Genealogical Society



# Family Backtracking

VOLUME XII.  
1987





PUGET SOUND GENEALOGICAL SOCIETY  
4430 Pine Avenue NE  
Bremerton, WA 98310

Organized 1974  
Dues \$10/year  
or \$12/family

"SERVING BREMERTON AND WEST PUGET SOUND AREA"

1987 OFFICERS

President:	Sharon Streitt	1-779-3957
Vice-President:	Carol Neumann	
2nd Vice-President:	Gordon Penland	876-1932
Recording Secretary:	Margaret Lentz	377-6770
Corresponding Secretary:	Beverly Morgen	692-6757
Treasurer:	Lou Smart	377-2801

BELFAIR CHAPTER

President:	Linnie Griffin	275-3770
Secretary/Treasurer:	Jan Stevenson	275-2034

COMMITTEES

Educational:	Carol Neumann	
Membership:	Gordon Penland	876-1932
Publicity:	Cindy Spore	871-0202
Historian:	Madelyn Cataldo	275-3259
Ways and Means:	Linnie Griffin	275-3770
Librarian:	Jackie Horton	692-2480
Genealogical Forms:	Maxine Crippen	377-2925
Microfilm:	Marlys Marrs	373-6945
Bulletin Editor:	Mary Penland	876-1932
Federation Delegates:	Sharon Streitt	1-779-3957
	Mary Penland	876-1932
Special Projects:	Rose Mary O'Brien	377-9306

FOR SALE

The following forms are available at the PSGS Library, 4430 Pine Avenue NE:  
ALL FORMS SOLD AT COST

Ancestor Chart - 4¢	Correspondence Log - 4¢
Family Group Sheets - 4¢	Census Checklist - 4¢
Data Work Sheet - 4¢	Census Worksheets - 4¢
Research Record - 4¢	Family Survey Questionnaire - 4¢

Back issues of Family Backtracking may be obtained from Bulletin Editor.



FAMILY BACKTRACKING  
A Publication of the Puget Sound Genealogical Society

QUARTERLY	Volume XII, Number 3	August, 1987
PUBLISHED FOUR TIMES A YEAR - FEBRUARY, MAY, AUGUST, NOVEMBER		

TABLE OF CONTENTS

Meetings and Coming Events . . . . .	41
Membership List . . . . .	42
Query . . . . .	43
Library News . . . . .	44
Federation of Genealogical Societies Newsletter . . . . .	46
Naval Hospital Records 1905-1918 (Continued from August 1986). . . . .	47
Kitsap County Marriages 1860-1915 (Continued) . . . . .	49
Washington State Veterans Home Cemetery, Retsil (Continued). . . . .	57

MEETINGS AND COMING EVENTS

The meetings of the Puget Sound Genealogical Society are held on the second Thursday of each month at 7 p.m. at the Club Library, 4430 Pine Ave. NE, Bremerton, Washington.

The Belfair Chapter meets on the first Tuesday of each month. For additional information call the president of the Belfair Chapter.

August	27	PSGS Library Hours - 12:30 - 3:30 p.m. and 7:00 - 9:00 p.m.
September	8	Belfair Meeting - Speaker, "Preserving Records," Shirley Webber
	10	PSGS Meeting, 7:00 - 9:00 p.m. Open Library
	18, 19, 20	Washington State Gen. Soc. Conference*
	24	PSGS Library Hours - 12:30 - 3:30 p.m. and 7:00 - 9:00 p.m.
October	3	Tacoma-Pierce Gen. Soc. Seminar
	6	Belfair Meeting
	8	PSGS Meeting, 7:00 - 9:00 p.m. Speaker, "The Western Frontier Civil War," Robert Larson
	22	Library Hours - 12:30 - 3:30 p.m. and 7:00 to 9:00 p.m.
November	3	Belfair Meeting
	12	PSGS Meeting, 7:00 - 9:00 p.m. Open Library

\*Location is Doubletree Inn at South Center at the junction of I-5 and 405. Three speakers will be featured each day of the conference. They are: F. William Filby, author of many research books, who will be speaking on County Histories, British and Maryland Genealogy, Immigration (1538-1900), Naturalization and Recent Genealogical Books. Howard Snedden, professional researcher and genealogist from Iowa, will speak on Probate/Land Records, Military Records on the Civil War, Newspaper Research and Unusual Sources. Jayare Roberts from Salt Lake City will speak on Immigration, Passenger Lists, How To Do U.S. Research, Naturalization after 1820 and Ellis Island. Brochures are available at PSGS library.

Don Steel, British genealogist, will address the Tacoma-Pierce seminar. Register by September 5. Cost is \$17 for singles, \$23 for husband and wife. Contact Mary Gorham, 2409 N. Washington, Tacoma WA 98406. Location is in the South Pavilion of St. Joseph's Hospital.



EDITOR WANTED. Would anyone like to become editor of this publication? Members of the Puget Sound Genealogical Society are invited to apply for the position. Contact the president, Sharon Streitt, if you are interested. The position will be open January 1, 1988, or earlier, if desired.

New members as of 15 July 1987:

Florence Anderson	2653 Pine Tree Dr	Port Orchard 98366	871-2534
Bonnie Andrews	902 S Marion Ave	Bremerton 98310	479-0595
William Campbell	9760 Emerald Pl SE	Port Orchard 98366	876-1250
Geneva Hammer	PO Box 8605	Port Orchard 98366	871-1397
Nellie Johnson	4449 Erlands Pt Dr	Bremerton 98312	373-3469
Doug Lince	328 S Lafayette #1	Bremerton 98310	479-3338
Harold Loucks	842 Retsil Rd	Port Orchard 98366	876-4180
Mary Lou Splett	774 NE Pine Crest Dr	Bremerton 98310	479-4523
Shirley Zimmer	3020 NE John Carlson Rd	Bremerton 98310	692-1039

SOCIAL SECURITY RECORDS. Copies of applications contain much good genealogical information. These original applications were for the purpose of obtaining Social Security numbers. The request for information must contain a statement from you that you are requesting it under the Freedom of Information/Privacy Act (which allows the release of this data once an individual is deceased). Photocopies will contain the name of the deceased, names of his/her parents, date and exact place of birth, residence, place of employment and signature. To obtain this free information address inquiries to local Social Security office.

RESEARCHING IN ILLINOIS? A clearinghouse for genealogical information in the Illinois counties of Fulton, Knox, Stark, and eastern McDonough is the objective of the Spoon River Valley Ancestor Exchange. Write Geraldine Mayhugh, 33 Longwood Dr., Canton IL 61520 for information.

MISSOURI RIVER VALLEY. A directory of 27 counties bordering the Missouri River from Sioux City IA to Independence MO has been published. The book contains information furnished by each county, a brief early history, and where records may be found (court houses, museums, genealogical or historical societies and research libraries). Information as to hours of the day, and days of the week when each is open is contained in the directory. "Tracing Your Roots in the Missouri River Valley" may be obtained from John and Enid Ostertag, 3005 Charles St., St. Joseph MO 64501. The cost is \$9.75 postpaid.

CENSUS BUREAU. The Bureau of Census has a new form and fee structure for the searching services provided by them. A full schedule can be obtained for \$4 each. Request Form BC-600 from Personal Census Service Branch, Bureau of the Census, Pittsburg KS 66762.

OKLAHOMA FEES. Birth and death records are now \$5. Write for proper form and enclose SASE to Division of Vital Records, Department of Health, 1000 NE 10th St., PO Box 53551, Oklahoma City OK 73152.

RHODE ISLAND. Rhode Island State Archives will help you search. Fees are 50 cents a page for copies. Write RISA, State House, Providence RI 02903.

CONFEDERATE RECORDS. Write to Confederate Descendants Society, PO Box 233, Athens AL 35611. Or, Rare Collection, T.K. Kennedy, PO Box 355, Braddock Heights MD 21702. Mr. Kennedy has over 15,000 surgical reports and case histories on Union and Confederate soldiers.

ANCESTOR A DOCTOR? Try Division of Library and Archival Services, American Medical Association, 535 N. Dearborn, Chicago IL 60610. Will research for a fee.



QUERY:

Need information on George Henry GEISEL, married Elizabeth Gertrude WACKENBARTH. One of their children was Florence L. GEISEL ROTHENBERG. Settled in Bremerton about 1905. George died ca 10 Apr 1917 in Bremerton.

Delcie ROTHENBERG, 100 Aloha, Apt. 410, Seattle WA 98109.

#####

RESEARCH IN GREECE. In each Greek community birth records have been kept since 1833 in a town archive. The registrar is usually the mayor. Greek churches have keep all records in three separate books: marriages, births and baptisms, and deaths. Probate records are held by the notary public drawing up the will. Three kinds of records are recognized: handwritte, secret and public. After death, the will is forwarded to the Secretary of the Court of the First Instance in Athens. The court will issue information on request.

MINNESOTA FEES. The state now charges \$11 for birth certificates and \$8 for death records. The Dept of Health has these. Marriage records are kept in the counties.

PASSPORTS. Write Diplomatic Records Branch, National Archives, Room 5-E, Washington DC 20408 for passports through 1905. Or, write Passport Office, Department of State, 1425 K St NW, Washington DC 20520 for passports issued from 1906 on. All passport applications give place of birth, birth date, and personal description. A charge is made for search and copies of records.

FADED WRITING. Have you tried a black light when struggling to read faded or smeared records? An ordinary black 75 watt electric light bull in any lamp that casts light directly on your subject does wonders for dim copy.

EARLY NEW ENGLAND MARRIAGE RECORDS. The Library in Salt Lake City has acquired Torrey's "New England Marriages Prior to 1799" on microfilm. The collection is available at LDS branch libraries, and is on seven rolls of microfilm, as follows:

929494 - Abbey-Cutting	929497 - Inbrook-Lyon	929500 - Tabor-Zallath
929495 - Dadey-Eyre	930498 - Mabet-Rymes	
929496 - Faves-Jyland	931499 - Sabeere-Symes	

MASONIC LODGE RECORDS. Write to the Grand Secretary of the state in which the Masonic ancestor resided. Information gives date and place of birth, and information about Masonic degrees received. Always include an SASE.

INDIANA RECORDS. To obtain genealogical information about members of the Methodist, Evangelical and United Brethren churches in Indiana, write joint archives of the three denominations: Wesley Wilson, Archives and Special Services, Roy O. West Library, DePauw University, Greencastle IN 46135. Enclose SASE.

LOST PLACE NAMES. If you cannot find a place listed in old records on today's maps, write United States Board on Geographic Names, 523 National Center, Reston VA 22092. Give as much information as you have, including time period. There is no charge, but enclose SASE.

IGI AT TACOMA LIBRARY. The Washington State Historical Society Library at 305 N. Stadium Way in Tacoma has purchased the complete International Genealogical Index for the United States and Ireland. Also on hand is the IGI for eight English counties and Orkney Co., Scotland. Library hours are 9:30 a.m. to 5 p.m. Tuesday through Saturday.



## LIBRARY NEWS

Members are advised to investigate the Hanging File where many local genealogical bulletins are located. This file also has material dealing with individual families and general instructions on genealogical research. Our librarian, Jackie Horton, has a good grasp of all the material located in the library, and always stands ready to help.

Included in the Hanging File is a catalog from The Preservation Emporium which offers a wide range of preservation materials, such as storage boxes and files, document repair materials, encapsulation materials etc.

**PRESERVATION OF DOCUMENTS AND NEWSPRINT.** One genealogical publication carries an article on "de-acidification and encapsulation" of materials, particularly newsprint. The author has a home-made approach to preservation, without resorting to too many commercial products. Her method:

Materials: 1 bottle club soda  
2 plain milk of magnesia tablets  
Mylar sheeting  
Double-faced Scotch tape, 1/4 inch  
Nylon netting

Equipment: Pyrex baking dish big enough for items to be preserved  
Fiberglass screen (from hardware store)  
White blotting paper  
Sheet of glass or plexiglass  
Tweezers or stamp tongs  
Cotton balls or camel's hair brush

**Method:** Mix club soda and magnesia tablets together 24 hours before. Handle items with tweezers or tongs. Dust item with cotton ball or brush. Cut piece of nylon netting to size of item. Lay item and netting on glass or fiberglass and lower into solution. When item is saturated, remove and drain on blotting paper. Let dry very thoroughly.

**Encapsulation:** Cut two pieces of Mylar one inch larger than item. Affix double-faced tape 1/4 inch inside mylar, being sure to leave enough clear space for the item. Remove protective covering from tape. Place item in reserved area so that it does not touch the tape. Place second piece of Mylar on top and smooth gently, removing as much air as possible. Rub taped areas firmly. Trim Mylar carefully, cutting through tape to provide quality adhesion.

**OR:** You can have clippings etc. laminated at a photographic supply store. The telephone book lists Photo-Dynamics on Silverday Way as the only source of lamination in our area. Either way you choose, newsprint (in particular) should be preserved somehow as it disintegrates very quickly.

**CALIFORNIA RECORDS.** As of January 1, 1987 California charges \$7 for death and \$11 for birth and marriage certificates, "whether a record is found or not."

**FUNERAL DIRECTORS.** A list of funeral homes and mortuaries in the United States, most of Canada and in some foreign countries is published every year. The pocket edition is \$15 postpaid from Nomis Publications, PO Box 5122, Youngstown OH 44514. The book lists crematories, hospitals in the U.S. as well as veterans hospitals and cemeteries. OR, your local friendly undertaker might let you take a peek at their copy.



CEMETERIES ARE NOT PERMANENT! (This article is taken from the Summer 1987 Tacoma-Pierce "Researcher.") The State of Washington has no law to protect old, undeeded cemeteries, Marie Oesting of the Pacific County Genealogical Society reported in the August 1986 "Clan Digger." Even an existing deeded cemetery is not permanent. If the cemetery association goes out of business and is not active for five years, neighboring land owners can petition the county to purchase the land at county-assessed value. Small cemeteries can be bulldozed without preliminary removal of tombstones, or even burials! The Researcher says "This situation emphasizes the importance of cemetery copying projects as a way of preserving these memorials."

This is a nation-wide problem. In November of 1985 the Tacoma News Tribune reported on a cemetery in Dallas TX which had fallen into disrepair, been vandalized and become an eyesore. In 1970, the City Council ordered the bodies removed. Later a developer subdivided the land for housing lots and sold them, apparently without removing the remains.

In New England, antique tombstones have become collectors items. Stolen stones fetch up to \$3000 for use as coffee table tops or flagstones. (In the editor's memory, it was reported that fraternity members at the University of Colorado regularly raided Colorado mountain cemeteries for tombstones.)

The Association for Gravestone Studies, a non-profit group dedicated to preserving ancient tombstones, condemns the "black market" trade in old tombstones. There is no legal precedent for obtaining a title to a tombstone. "If you see one for sale, it has most likely been stolen."

Advises the Researcher, "If you locate your ancestor's monument this summer, take a picture or make a rubbing. It may be gone the next time you look."

**SOUTH DAKOTA RESEARCH.** The Sioux Valley SD Gen. Soc. newsletter provides valuable tips for persons researching in that state:

South Dakota had a militia, and names, ages, and addresses of men eligible can be found at county court houses in that state.

Spouses of aliens ALSO had to take an oath of allegiance to the United States, and in so doing supplied information about their birth, marriage, and personal appearance which be found at SD county court houses. (This information is probably on file in other states, too.)

The burial expenses of South Dakota Civil War veterans of the Union Army could be paid by the state. Therefore, proof of military service can be found at SD county court houses.

Applications for employment with the WPA, or for admission to the South Dakota Sanatorium for Tuberculosis, or for surgical and hospital care for crippled children, all contain family history. These, too, can be found at SD county court houses.

**NEW YORK RESEARCH.** Land records on microfilm at New York State Archives are available on interlibrary loan. Write New York State Archives, State Education Center, Empire State Plaza, Albany NY 12230. You may also obtain A Guide to Records in the New York Archives by writing Office of Cultural Education, State Archives, Albany NY 12230.

**EASTERN EUROPEAN TOWNS.** Maps dating back to 1790 are available. Send phonetic spelling of town, and if possible, give name of the largest town nearby. Write Map Department, Jewish Genealogical Society of Illinois, c/o Mrs. Freya Maslov, 1518 W. Keeny St., Morton Grove IL 60053. The cost is \$2.50 plus a large SASE.

**AMERICAN BATTLE MONUMENTS.** The ABM Commission oversees 38 cemeteries in foreign countries including the graves of more than 123,000 American dead from both World Wars. For location of a burial and a pamphlet, write ABMC, 5127 Pulaski Bldg., 20 Massachusetts Ave, Washington DC 20314.



FEDERATION OF GENEALOGICAL SOCIETIES NEWSLETTER

NATIONAL ARCHIVES GIFT FUND. A donation of \$1 from each genealogist in the United States is being sought to finance projects undertaken by the National Archives, which are not funded by government monies. The Federation acts as caretaker and keeper of accounts, forwarding them to the Archives.

The first project of the NARA gift fund was the Street Index to Major Cities in the 1910 Census. Copies have been placed in all 11 branches of the National Archives. The Index saves a genealogist hours of time when searching big city censuses (53 reels for New York City, 45 reels for Chicago and 30 reels for Philadelphia.)

The NA has been working on an Index to Ship's Passenger Lists, beginning with the Port of New York. Unfortunately, the poor quality of the illegible index cards has presented an almost insurmountable task. So far 50 reels of passenger lists and indexes for the port of Galveston have been reproduced.

Suggestions for further projects are (1) index to Compiled Service Records of Volunteers in the War of 1812; (2) reproducing the Civil War Naval Widow's pension records; (3) indexes to New York immigration and naturalization records. Comments and suggestions are welcome. Send to Rabbi Malcolm H. Stern, NARA Gift Fund National Chairperson, 300 E. 71st St., #5R, New York NY 10021.

MICHIGAN SOURCEBOOK. This recently published bibliography of histories and records owned by the Library of Michigan is now available. It contains records for each of the 83 Michigan counties. Members of 61 genealogical societies worked copying, indexing and typing these records. The price is \$6 per copy. Write: Office Services Division, Dept. of Management and Budget, 7461 Crowser Dr., Lansing MI 48913.

ALLEN COUNTY INDEX. This renowned public library has published a comprehensive locality, subject and surname index to the periodicals received by the library. For the first time, library patrons everywhere will be able to access citations from the vast Allen Co. Gen. Dept. The 1986 volume contains nearly 17,000 citations from over 1000 periodicals. For information write PERSI Project, Allen County Public Library, PO Box 2270, Fort Wayne IN 46801-2270.

The Allen County Library will check their holdings for rare county or family history books. They will copy pages (if out of copyright) for 15 cents per page, plus a \$3 handling fee (binding done for an additional \$3). Write Allen Co. Public Library, 900 Webster St., Fort Wayne IN 46802. Depending upon the size of the job, the procedure may take from two weeks to two months.

PRESSING ISSUES. New guidelines of the Freedom of Information Act will seriously limit fee waivers for persons doing historical research at the National Archives. Requesters from news media and educational and scientific institutions would be charged only duplication costs, but an individual doing personal historic work would be considered as "commercial" and be charged a fee for each bit of information. FGS recommends writing to (1) Senate Subcommittee on Technology and Law of the Judiciary Committee, Patrick Leahy, Chairman, US Senate, Washington DC 20510, or (2) House Subcommittee on Govt Info. of the Govt Operations Committee, Glenn English, Chairman, US House of Representatives, Washington DC 20515 and register your concern.

HORSE CAVALRY. The U.S. Horse Cavalry Assoc., PO Box 6253, Fort Bliss TX 79906 is sponsoring a museum dedicated to all ex-cavalrymen from the Revolution to World War II. Genealogical information is being sought for a data base providing a short biographical sketch of every cavalryman. Anyone having such a person in their family tree is asked to contact the association and provide information.

SEATTLE ARCHIVES. The last three ethnic heritage open houses will be held at the Seattle Archives in the next few weeks. On September 8, "The Schrader Family" (German-American) will be featured; on October 6, "The Garcia Family" (Puerto Rican); and on November 3, "The Merlin Family" (Jewish).



The following is a list of addresses for genealogical societies in the states indicated. The list was started in the May issue of Family Backtracking, and is published to assist members in locating genealogical societies in particular locations.

KENTUCKY

Southern Kentucky Genealogical Society  
PO Box 1905  
Bowling Green KY 42101

Butler County Gen. & Hist. Society  
PO Box 435  
Morgantown KY 42261

LOUISIANA

Baton Rouge Gen. & Hist. Society  
PO Box 80565, S.E. Station  
Baton Rouge LA 70898-0565

St. Bernard Genealogical Society  
PO Box 271  
Chalmette LA 70044-0271

Ark-La-Tex Genealogical Associations  
PO Box 4462  
Shreveport LA 71134-0462

Terrebonne Genealogical Society  
PO Box 295, Sta. 2  
Houma LA 70360

MAINE

Maine Genealogical Society  
66 Washington St.  
Brewer ME 04412

MARYLAND

Genealogical & Periodical Annual Index  
3602 Maureen Ln.  
Bowie MD 20715

MASSACHUSETTS

Berkshire Family History Association  
PO Box 1437  
Pittsfield MA 01202

MICHIGAN

Flint Genealogical Society  
PO Box 1217  
Flint MI 49501-1217

Midland Genealogical Society  
C/o G.A. Dow Library  
1710 W. St. Andrews Dr.  
Midland MI 48640

Shiawassee County Genealogical Society  
PO Box F41  
Owosso MI 48867

Gen. Assoc. of Southwestern Michigan  
PO Box 573  
St. Joseph MI 49085

MINNESOTA

Twin Ports Genealogical Society  
PO Box 16895  
Duluth MN 55816-0895

Anoka County Genealogical Society  
1900 Third Ave. S.  
Anoka MN 55303

Mower County Genealogical Society  
Box 145  
Austin MN 55912

MISSOURI

Cape Girardeau Co. Genealogical Society  
PO Box 389  
Jackson MO 63755

Heart of America Gen. Society  
C/o Kansas City Public Library  
311 E. 12th St.  
Kansas City MO 64106

St. Charles Co. Genealogical Society  
PO Box 715  
St. Charles MO 63301

St. Louis Genealogical Society  
1695 S. Brentwood Blvd. Suite 203  
St. Louis MO 63144



## MISSOURI

West Central Missouri Gen. Society  
705 Broad  
Warrensburg MO 64093

Johnson County Historical Society  
PO Box 825  
Warrensburg MO 64093

## MISSISSIPPI

Chickasaw County Gen. & Hist. Society  
PO Box 42  
Houston MS 38851

The Skipwith Gen. & Hist. Society  
PO Box 1382  
Oxford MS 38655

Senatobia Gen. & Hist. Society  
PO Box 974  
Senatobia MS 38668

## MONTANA

Gallatin Genealogical Society  
PO Box 1783  
Bozeman MT 59771-1783

Great Falls Genealogical Society  
1400 First Ave. N.  
Great Falls MT 59401

Assinibone Genealogical Society  
PO Box 321  
Havre MT 59501

Lewis and Clark Genealogical Society  
PO Box 5313  
Helena MT 59624

\*Flathead Valley Genealogical Society  
Box 584  
Kalispell MT 59901-0584

Lewiston Genealogical Society  
701 W. Main  
Lewiston MT 59457

## NEBRASKA

Northwest Genealogical Society  
PO Box 6  
Alliance NE 69301

Southeast Nebraska Genealogical Society  
PO Box 562  
Beatrice NE 68310

Eastern Nebraska Genealogical Society  
PO Box 541  
Fremont NE 68025

Nebraska State Genealogical Society  
PO Box 5603  
Lincoln NE 68505

Southwest Nebraska Genealogical Society  
PO Box 176  
McCook NE 69001

Lincoln-Lancaster Co. Gen. Society  
PO Box 30055  
Lincoln NE 68503-0055

Greater Omaha Genealogical Society  
PO Box 4011  
Omaha NE 68104

NEW HAMPSHIRE  
American-Canadian Genealogical Society  
PO Box 668  
Manchester NH 03105

## NEW YORK

Niagara County Genealogical Society  
C/o Nancy B. Smith, #3  
2650 Hess Road  
Appleton NY 14008

Orange County Genealogical Society  
101 Main St.  
Goshen NY 10924

St. Lawrence Valley Genealogical Society  
PO Box 86  
Potsdam NY 13676-0086

Dutchess County Genealogical Society  
PO Box 708  
Poughkeepsie NY 12602

\*This publication may be found in the PSGS library.



# NAVAL HOSPITAL RECORDS

Listing of patients at the Naval hospital in Bremerton was begun in the August 1986 issue, but discontinued for lack of space. Ages listed are for exact date each man was admitted to the hospital. Anyone interested in obtaining birth dates should contact the club, as records on file show the date of admittance, and approximate birth dates can be figured from these records. The records date from 1900 to the first World War.

NAME	AGE	BIRTHPLACE	ENLISTMENT
(Note: PSNS stands for Puget Sound Naval Shipyard, Bremerton WA)			
ANDERSON, Nils	24Y 10 MO	Sweden	
ANDERSON, Olaf Osker	34Y 4 MO	Christianssen, Norway	San Francisco 13 Feb 1906
ANDERSON, Paul Manwaring	20Y 5 MO	Illinois	Chicago IL 12 Apr 1917
ANDERSON, Raymond Alson	23Y 1 MO	Colorado	Denver CO 28 Jul 1914
ANDERSON, Thomas	37Y 6 MO	Sweden	New York NY 30 Jun 1904
ANDERSON, Thorwald Anthon	26Y 11 MO	Kankakee IL	PSNS 8 Jun 1909
ANDERSON, Walter	18Y 10 MO	Black Diamond WA	PSNS 19 Dec 1911
ANDRASKA, Peter	23Y 3 MO	Wisconsin	Minneapolis 27 Jan 1911
ANDRESEN, C. Gamborg	42Y 1 MO	Norway	Appt NY 13 Apr 1899
ANGEL, Enos Marion	24Y 3 MO	California	Los Angeles 18 Oct 1910
ANGLUS, Joseph Johnson	27Y 6 MO	Rio Vista CA	Mare Island 24 Mar 1909
ANKENBRANDT, Fred Wm.	23Y 2 MO	Mt Carmel IL	St Louis MO 27 Jan 1908
ANSBURN, James	21Y 8 MO	Ft Worth TX	San Diego CA 20 Dec 1910
ANTONY, Leonardo	19Y 5 MO	Phil. Isl.	Cavite PI 14 Jun 1916
ANTROBUS, Charles	27Y 11 MO	Floodgates NJ	PSNS 2 Sep 1909
APPLEGATE, Ivan	27Y 4 MO	Oregon	Medford OR 20 Mar 1917
APPLEGATE, Wm. Wallace	18Y 11 MO	Illinois	Denver CO 14 Nov 1913
ARCEO, Ygnacio	24Y 4 MO	Guam	Agana, Guam 12 Jun 1913
ARCHER, Lucian Ellis	22Y	Texas	Dallas TX 23 Apr 1912
ARCHIBALD, Edw. Murray	29Y 5 MO	Yamhill OR	Seattle WA 3 Jan 1912
ARGERBRIGHT, Harry	41Y 7 MO	Indiana	PSNS 4 Feb 1911
ARGES, Phillip Ernest	28Y 10 MO	New York NY	Kans City MO 7 Sep 1905
ARICTSEN, Hans	35Y 8 MO	Norway	Mare Island CA 8 Feb 1911



NAME	AGE	BIRTHPLACE	ENLISTMENT
ARINDON, Albert Nathanie	24Y 7 MO	New Hampshire	Denver CO 31 Jul 1911
ARKEBAUER, Arthur Berl	36Y 6 MO	Illinois	
ARMELL, Lawrence Raymon	23Y 2 MO	Iowa	Omaha NB 23 Jun 1913
ARMSTRONG, Edwin Young	22Y 6 MO	Smith Lake MN	PSNS 17 Jun 1912
ARMSTRONG, Wm. Allan D.	33Y 8 MO	Missouri	SL City UT 14 Apr 1917
ARNOLD, James Henry	20Y 10 MO	Wheatland MS	Peking China 23 Apr 1910
ARNOLD, Philip Frederick	30Y 8 MO	Wisconsin	PSNS 13 Feb 1914
ARNOLD, William Roy	22Y 2 MO	Arthur ND	Fargo ND 25 Mar 1911
ART, Alexander James	23Y 6 MO	New York	Buffalo NY 17 Jul 1911
ARTHUR, Charles Snowden	20Y 3 MO	Palestine TX	Denver CO 8 Jan 1904
ARVIN, Benjamin L.A.	19Y 5 MO	Kentucky	Seattle WA 17 May 1917
ASBJORENSEN, Hilmer Peter	19Y 10 MO	Wisconsin	Minneapolis 17 Mar 1913
ASBURY, George Frank	23Y 10 MO	Jarger WV	Seattle WA 10 Nov 1910
ASHBY, John Hamilton	21Y 3 MO	Galveston TX	Philadelphia 8 Jul 1908
ASHER, Jacob	51Y 2 MO	Russia	New York NY 11 Sep 1905
ASHER, Leroy	21Y 6 MO	California	San Francisco 13 Jan 1916
ASHWILL, Don Eli	24Y 2 MO	Desota KS	Bremerton WA 22 Apr 1903
ASTORGA, Angel A.	22Y 5 MO	Philippines	Olongapo PI 12 May 1915
ATCHERSON, Harry	29Y	Montana	Los Angeles CA 6 Oct 1914
ATWOOD, Edward William	29Y 7 MO	Wisconsin	Vallejo CA 30 Oct 1916
ATWOOD, George Marks	21Y 8 MO	Toledo AR	Dallas TX 25 Feb 1909
AUDERTON, Edward Thomas	30Y 1 MO	Kansas	Minneapolis 17 Dec 1913
AUSTIN, Arthur William	30Y	Kansas	Seattle WA 4 May 1914
AUSTIN, Charles Brooks	20Y 4 MO	Ohio	Cleveland OH 20 Sep 1911
AUSTIN, Fred Blufred	25Y 9 MO	Tennessee	Dallas TX 6 May 1916
AUSTIN, James Robert	25Y 6 MO	Newark AR	Dallas TX 5 Dec 1906
AVERY, Harvey Kilmer	25Y	New York	Guam 2 Sep 1910
AWKERMANN, J.J.	25Y 3 MO	Pennsylvania	
AXFORD, Joseph Delay	20Y 5 MO	Washington	Seattle WA 29 May 1917



NAME	AGE	BIRTHPLACE	ENLISTMENT
AYERS, Walter Leroy	23Y 3 MO	Marshalltown AL	Kans. City MO 31 Jan 1910
BACH, Herbert	23Y 5 MO	Oregon	Marine Bks WA 16 Apr 1917
BACHISON, Andrew Henry	22Y	Pennsylvania	Portland OR 9 Oct 1913
BACKER, John	29Y 3 MO	Minnesota	Mare Isl CA 30 Mar 1910
BACKS, George	29Y	Minnesota	Minneapolis 22 Nov 1913
BACKUS, Moody	21Y 2 MO	Vinton WVa	Cincinnati 8 May 1906
BACON, George Henry	25Y 7 MO	Lexington NB	Denver CO 8 Jul 1908
BACON, George LeRoy	32Y 1MO	Butte MT	Cheyenne WY 26 Jun 1912
BAGBY, Clyde Joseph	17Y 10 MO	Colorado	Portland OR 19 Jul 1916
BAGGETT, Lee Hartwell	25Y 5 MO	Tennessee	Nashville TN 15 Mar 1912
BAGUTSKI, Michael	20Y 1 MO	Ohio	Seattle WA 28 Feb 1912
BAIER, Jacob	25Y 6 MO	Germany	Detroit MI 19 Dec 1899
BAILARD, Delmar Gilbert	18Y 7 MO	California	San Francisco 25 Nov 1913
BAILEY, Atlas	26Y 2 MO	Oklahoma	Dallas TX 24 Feb 1916
BAILEY, Eraste	21Y 7 MO	Louisiana	SL City UT 19 Jun 1916
BAILEY, Hubert	25Y 6 MO	Memimackport MA	Boston MA 18 Nov 1907
BAILEY, Leslie	23Y 10 MO	Peabody MA	Boston MA 18 Dec 1906
BAILEY, Paul Alton	27Y 11 MO	Texas	Dallas TX 21 Jun 1916
BAKER, Adelbert	29Y 5 MO	Sickles MI	PSNS 7 Sep 1903
BAKER, Andrew David	22Y 10 MO	Arkansas	Dallas TX 17 Aug 1915
BAKER, Edward	22Y 3 MO	Vinna OK	Kansas City 12 Nov 1912
BAKER, Eugene	25Y 5 MO	Windom MN	PSNS 23 Oct 1905
BAKER, George	30Y 2 MO	Road House IL	Omaha NB 19 Sep 1911
BAKER, George Lewis	21Y 4 MO	Texas	Houston TX 11 Jan 1916
BAKER, Henry Thomas	36Y	Chautauqua NY	Apptd Lt OH 8 Oct 1890
BAKER, James Oscar	22Y 3 MO	Meadsville PA	Rochester NY 11 Jun 1907
BAKER, Jesse Mirun	21Y 2 MO	Kansas	Dallas TX 7 Aug 1912
BAKER, John	29Y 8 MO	Minnesota	PSNS 24 Jul 1914
BAKER, Lewis Austin	20Y 6 MO	Key West FL	Key West FL 16 Mar 1908



NAME	AGE	BIRTHPLACE	ENLISTMENT
BAKER, Omer Willard	24Y 8 MO	Leavenworth IN	PSNS 5 Jun 1908
BAKER, William Arthur	26Y 1 MO	Ohio	Seattle WA 13 May 1917
BAKER, William Charles	26Y 8 MO	Pittsburgh PA	Kans City MO 19 Nov 1905
BALD, George Henry	19Y 2 MO	San Francisco	San Francisco 18 May 1910
BALDWIN, Earnest Henry	26Y 3 MO	Illinois	Denver CO 19 May 1915
BALDWIN, Frank Pardee	40Y 4 MO	Pennsylvania	Lieut. Commander
BALES, Jess James	24Y	Oregon	Portland OR 7 May 1917
BALES, Justin Walter	25Y 11 MO	Nebraska	Cedar Rpd IA 10 Feb 1911
BALL, George Rudolph	18Y 3 MO	Colorado	Denver CO 2 Sep 1913
BALL, Wm Thomas Car.	17Y 1 MO	Montana	PSNS 13 Jan 1908
BALLARD, Harry Ralph	35Y 1 MO	Iowa	Omaha NB 1 Sep 1911
BALLARD, Johnny Albert	22Y	Ohio	Detroit MI 12 Sep 1910
BALLINGER, Lester Charles	18Y 11 MO	San Jose CA	San Francisco 21 Apr 1909
BALLIS, Jacob Charles	18Y 7 MO	Troy IN	Norfolk VA 1 Jun 1905
BALLS, Felix Edward	21Y 11 MO	Texas	Galveston TX 14 Aug 1913
BALTIMORE, Nathan	25Y 3 MO	Russia	New York NY 14 Aug 1911
BANASK, Fred	37Y 7 MO	Germany	Mare Isl CA 22 Jul 1912
BANCOM, Roy Ewing	26Y 10 MO	Bolivar MO	Dallas TX 12 Jun 1909
BANE, Ernest	24Y 3 MO	Georgia	PSNS 2 Nov 1914
BANER, Josep Daniel	28Y 1 MO	Turtle Creek PA	San Francisco 1 Apr 1910
BANGHART, Charlie Milton	24Y 2 MO	Olney IL	Kans City MO 23 Nov 1909
BANKER, Marion Ayres	19Y 4 MO	Glendale CA	Los Angeles 27 Oct 1908
BANNSE, Danial Alonzo	28Y 11 MO	Bucoda WA	PSNS 15 Aug 1901
BARCHUS, Harley Albert	18Y 9 MO	Iowa	Omaha NB 25 Aug 1910
BARCLAY, Floyd	25Y 4 MO	Missouri	Lcs Angeles 22 Jul 1913
BARCUS, Virgil Edward	23Y 6 MO	Iowa	Des Moines IA 12 Sep 1912
BARGER, Harold Green	19Y 1 MO	Indiana	SL City UT 4 Sep 1913
BARKER, Henry Eugene	26Y 5 MO	Illinois	St Louis MO 23 Jan 1915
BARKER, William Cyrus	30Y 2 MO	Burlington IA	Lieut.



KITSAP COUNTY MARRIAGE RECORDS 1860-1915 (Cont.)

PAUL R. PHILBRICK, age 28, carpenter  
Resident of Summit, Wash.; native of Wisconsin  
Son of Birlie F. Philbrick and (?) Barnard  
ISABEL M. GALLAGHER, age 28, waitress  
Resident of Everett, Wash.; native of Ewing, Mich.  
Daughter of John McLaughlin and May Ann Tufgy  
Marriage Performed by: Rev. Rowland Hughes. Place: Port Orchard, Wash.  
Date: 14 Oct 1903; license date 14 Oct 1903; groom's first marriage, bride's second  
Witnesses: Ethel B. Osburn and Sarah Hughes

GILBERT MYERS, age 21, shingle weaver  
Resident of Centralia, Wash.; native of Illinois  
Son of R.J. Myers and May Guthrie  
BLANCHE HENDERSON, age 18, housewife  
Resident of Chehalis, Wash.; native of "Manhattan Island"  
Daughter of H.G. Henderson and Blanche Blankenship  
Marriage Performed by: F.D. Fuller J.P. Place: Port Orchard, Wash.  
Date: 15 Oct 1903; license date 15 Oct 1903  
Witnesses: W.A. Stubbs and J. Peyton of Port Orchard

WILLIAM A. MACKAY, age 26, shipfitter  
Resident of Bremerton, Wash.; native of Douglas Co., Oregon  
Son of John Mackay and Hanna St. Orsis  
ALICE DRISCOLL, age 21, "helped her mamma"  
Resident of Bremerton; native of Buffalo, N.Y.  
Daughter of Thomas Driscoll and Alice McCabe  
Marriage Performed by: L.A.H. Allain, R.C. Priest. Place: Bremerton, Wash.  
Date: 30 Sep 1903, license date 29 Sep 1903  
Witnesses: Claude Daniels and Kate Driscoll

RASMUS J. JACOBSON, age 24, carpenter  
Resident of Port Blakely, Wash.; native of Greno, Denmark  
Son of Antone Jacobson and Ersonena Christensen  
MARIE MAISONMER GERTSEN, age 30, housewife  
Resident of Port Blakely; native of Renders, Denmark  
Daughter of Knute Gertsen and Marie Jensen  
Marriage Performed by: Rev. F.H. Adams. Place: Winslow, Wash.  
Date: 2 Sep 1903; license date 29 Aug 1903; groom's first marriage, bride's second  
Witnesses: Eliza Perkins and Alice Eakin

DAVID BOAG, age 31, gardener  
Resident of Charleston, Wash.; native of Uddington, Scotland  
Son of Alexander Boag and Elizabeth Lees  
RUTH MARGARET ROBINSON, age 21, housekeeper  
Resident of Charleston; native of Kansas  
Daughter of Alfred Robinson and Alice Conlee  
Marriage Performed by: Rev. W. Chalmers Gunn. Place: Charleston, Wash.  
Date: 25 Dec 1903; license date 24 Dec 1903; groom's second marriage, bride's first  
Witnesses: Walter Robinson of Port Orchard and George E. Miller



GEORGE SMITH, age 35, motorman  
Resident of Seattle; native of London  
Son of George Smith and Cathern McMillian  
SARAH ANNA BANGS JEABULT, age 36, housekeeper  
Resident of Seattle; native of Amsterdam, N.Y.  
Daughter of Robert Jeabault and Mary Cooly  
Marriage Performed by: F.D. Fuller J.P. Place: Port Orchard, Wash.  
Date: 17 Dec 1903; license date 17 Dec 1903; groom's first marriage, bride's second(?)  
Witnesses: Gladys Fuller and George E. Miller

WILLIAM J. DAVIS, age 26, boilermaker  
Resident of (not given); native of Masonville, Kentucky  
Son of M.S. Davis and S.S. Wysong  
CLARA M. REED, age 19, housekeeper  
Resident of Bremerton; native of Arapahoe, Nebraska  
Daughter of W.K. Reed and E.L. Williams  
Marriage Performed by: F.D. Fuller J.P. Place: Port Orchard, Wash.  
Date: 22 Dec 1903, license date 22 Dec 1903  
Witnesses: Mrs. C. Bishop and Charlotte Quinole

CHARLES W. DAVIDSON, age 35, laborer  
Resident of Des Moines, Wash.; native of Green Bay, Wisc.  
Son of David Davidson and Malinda Wilson  
MARTHA E. HOPKINS (nee Rice), age 31, housekeeper  
Resident of Kent, Wash.; native of Bolivar, Missouri  
Daughter of C.O. Rice and Elizabeth Myers  
Marriage Performed by: F.D. Fuller J.P. Place: Port Orchard, Wash.  
Date: 2 Jan 1904, license date 2 Jan 1904; groom's first marriage, bride's second  
Witnesses: F.P. Jameson and J.K. Kiernan of Port Orchard

GEORGE E. HARMAN, age 24, common laborer  
Resident of Harper, Wash.; native of Port Orchard, Wash.  
Son of George Harman and Jennie Curly  
CELIA STAMP, age 18  
Resident of Snoqualmie, Wash.; native of Houghton, Wash.  
Daughter of Edward Stamp and Lucy Tuttle  
Marriage Performed by: J.M. Dick D.D. Place: Harper, Wash.  
Date: 16 Jan 1904, license date 15 Jan 1904  
Witnesses: N.N. Butts and A.E. Rainwater

BURT PULVER, age 25, washer  
Resident of Tacoma, Wash.; native of Greenville, Mich.  
Son of Abraham Pulver and Jane Filkins  
BERTH ROGERS, age 18, housekeeper  
Resident of Bremerton, Wash.; native of Nanaimo, B.C.  
Daughter of Manuel Rogers and Kate Sorg  
Marriage Performed by: F.D. Fuller J.P. Place: Port Orchard, Wash.  
Date: 9 Jan 1904, license date 9 Jan 1904  
Witnesses: Carl Lund and Walter Robinson

WILLIAM A. SHINKLE, age 39, marine engineer  
Resident of Seattle; native of Cincinnati, Ohio  
Son of William Shinkle and (?) Goolna  
JOSEFINE OSBORNE, age 28  
Resident of Chicago, Ill.; native of Chicago  
Daughter of John Osborne and (not given)  
Marriage Performed by: C.M. Rivers J.P. Place: Bremerton, Wash.  
Date: 18 Jan 1904, license date 18 Jan 1904; groom's second marriage, bride ?  
Witnesses: C.E. Luxton of Port Orchard and T.M. Atkinson of Bremerton



HENRY O. STUBB, age 32, farmer  
 Resident of Pearson, Wash.; native of Union Co., S.D.  
 Son of Ole A. Stubb and Gunhild Hafstad

SOPHIA MARIA PEDERSEN, age 45  
 Resident of Pearson, Wash.; native of Bergen, Norway  
 Daughter of Joakin Pedersen and Barbro Jacobson

Marriage Performed by: Uno N. Braner. Place: Pearson, Wash.  
 Date: 21 Feb 1904, license date 3 Feb 1904; groom's first marriage, bride's second  
 Witnesses: Mr. Otto Hjelm and Mrs. Lotta Hjelm

WALTER L. GROW, age 30, farmer  
 Resident of Winslow, Wash.; native of Kansas  
 Son of Ambrose Grow and Amanda Wisner

LEORA E. SHECKELS, age 26, dressmaking  
 Resident of Winslow; native of Illinois  
 Daughter of John A. Sheckels and Zerna E. Bullock

Marriage Performed by: Rev. James P. Cary. Place: Winslow, Wash.  
 Date: 30 Mar 1904, license date 29 Mar 1904  
 Witnesses: Mrs. A.F. Grow and Mrs. Z.E. Sheckles

MARSHALL A. HOLMES, age 35, miner  
 Resident of Seattle; native of Binghamton, N.Y.  
 Son of William Holmes and Margaret Moyer

MINNIE M. GREGG, age 31, trained nurse  
 Resident of Seattle; native of St. Johnsville, N.Y.  
 Daughter of John Gregg and Jane Griffith

Marriage Performed by: no information given. Place: England (?)  
 Date: (License date only) 11 Nov 1903; groom's second marriage, bride's first  
 Witnesses: None given

WILLIAM JAMES MCPHERSON, 31, farmer  
 Resident of Colby, Wash.; native of Tp Ora Ont. Canada  
 Son of John A. McPherson and Flora McEacheron

LOUISE ELIZABETH CROUCH, age 20, "at home"  
 Resident of Bath, England; native of Bath, England  
 Daughter of Walter Crouch and Eliza Dean

Marriage Performed by: no information given. Place: No info  
 Date: license date 11 Apr 1904; first marriage for both  
 Witnesses: T.A. Grant and Flora McPherson

HUGH B. WREN, age 45, rancher  
 Resident of Port Orchard, Wash.; native of Plat Co. Missouri  
 Son of Hugh E. Wren and Mary J. Hanaw

SARAH E. BURWELL, 42, housewife  
 Resident of Mountaingrove, Va.; native of Millboro, Va.  
 Daughter of Permens Wood and Susan Carrell

Marriage Performed by: F.J. Fuller J.P.  
 Date: 21 Mar 1904; license date 21 Mar 1904; second marriage for both  
 Witnesses: Mrs. H.L. Schlabach and Clarence Wren

CHARLES H. MIDLAND, age 29, white, farmer  
 Resident of Olalla, Wash.; native of Sagono, Mich.  
 Son of John Midland and Elizabeth Maitland

NELLIE CANDOR (CONNERY), age 18, white, housekeeper  
 Resident of Colby, Wash.; native of Fertile Polk, Minn.  
 Daughter of Timothy Connery and Mary Elizabeth Dougherty

Marriage Performed by: Father McDermot. Place: Buffalo, Minn.  
 Date: 28 Sep 1904; license date 27 Apr 1904  
 Witnesses: Joseph Mee and Ellen Mee



ROYAL I. DENNISTON, age 26, white, bookkeeper  
 Resident of Seattle; native of Missouri  
 Son of S.A. Denniston and J.C. Isakson  
 LORENE HOLMAN, age 24, white  
 Resident of Port Orchard, Wash.; native of Illinois  
 Daughter of P.P. Holman and R.F. Sanderson  
 Marriage Performed by: G. Anderson. Place: Port Orchard, Wash.  
 Date: 30 Mar 1904; license date 29 Mar 1904  
 Witnesses: W.N. Denniston and Carrie M. Holman

JOB THOMAS JONES, age 29, white, farmer  
 Resident of Bethel, Wash.; native of Iowa  
 Son of Thomas Jones and Mary ?  
 VIOLA GERTRUDE -----, 22, white, music teacher  
 Resident of Bethel; native of Kansas  
 Daughter of James C. Mulenn and Margaret Ellen ?  
 Marriage Performed by: Alonzo Jones. Place: Bethel, Wash.  
 Date: 1 May 1904; license date 26 Apr 1904  
 Witnesses: Alice R. Jones

FRED LANDIN, age 35, white, carpenter  
 Resident of Foster, Wash.; native of Sweden  
 Son of Nels Larson and Anna ?  
 AGNES GOCHIA, age 23, white, nurse  
 Resident of Tacoma, Wash.; native of Minneapolis  
 Daughter of Godfrey Gochia and Elizabeth Roscoe  
 Marriage Performed by: F.D. Fuller J.P. Place: Port Orchard, Wash.  
 Date: 10 May 1904, license date 10 May 1904  
 Witnesses: J.L. Kiernan and Lydia Knowles of Port Orchard

ALLEN N. ENOS, age 46, white, farmer  
 Resident of Holly, Wash.; native of New York  
 Son of Emilius J. Enos and Lucy Ann Smith  
 LIZZIE TRACY, age 36, white, dressmaker  
 Resident of Holly; native of New York  
 Daughter of Charles Tracy and Sarah Sternberg  
 Marriage Performed by: M. Eels D.D. Place: Holly, Wash.  
 Date: 15 May 1904, license date 27 Apr 1904; groom's third marriage, bride's first  
 Witnesses: Mrs. Nellie Pfundt and Miss Gertie Wyatt of Holly

RILEY WHITE, age 28, white, farmer  
 Resident of Colby, Wash.; native of Oregon  
 Son of Morton White and Malinda Davis  
 CHARLOTTE BLAKELY, age 16, white  
 Resident of Colby; native of Colby, Wash.  
 Daughter of John Blakely and Alice Brooks  
 Marriage Performed by: David Husband D.D. Place: Sidney, Wash.  
 Date: 24 May 1904, license date 24 May 1904  
 Witnesses: C. White and Alice Blakely

GEORGE M. McCORMICK, age 38, white, carpenter  
 Resident of Bremerton, Wash.; native of New York  
 Son of D.C. McCormick and Ann Mager  
 LAURA G. THOMPSON, age 28, white, nurse  
 Resident of Seattle; native of Genessee ?  
 Daughter of Alexander Thompson and Laura J. Hart  
 Marriage Performed by: M.A. Mathew D.D. Place: Seattle, Wash.  
 Date: 5 Jun 1904, license date 4 Jun 1904  
 Witnesses: C.W. Kimball and D.A. Gorton of Seattle



VETERANS HOME CEMETERY (RETSIL, WASH.) Continued

Row 60 (Cont.)

MARGARET HOULIHAN  
W/o P.W. Houlihan  
27 Oct 1921

NELLIE STONE  
Wife of J. Williams  
1854-1921  
JEROME WILLIAMS  
Co G 49 Ohio Vol Inf  
1840-1922

WM. DEERING  
Co C 15 Me Inf

HARRY COURTRIGHT  
Co C 1 Mich E&M  
1841-1925  
ROSANNA J. "His wife"  
1851-1922

SAMUEL I. HARDINGER  
Co D 19 Ohio Vol Inf  
1844-1922  
ELVIRA WILLIAMS "His wife"  
1843-19-

MATTIE S. LEONARD  
Wid. of I.N. Leonard  
9 Dec 1927

W. H. H. THOMPSON  
Co B 2 Kans Cav

LIBBIE J. THOMPSON  
Wid. of W.H. Thompson  
d. 26 May 1924

EMMETT L. WARREN  
Co B 2 Ore Mtd Vols  
Indian War  
Husb. of Matilda

MATILDA WARREN  
Wife of E.L. Warren  
d. 15 Jul 1928

WILLIAM V. CHASE  
Co D 33 Wis Inf

LOUIS R. SEYMOUR  
Sgt Co D 36 Ill Inf

ELZA A. REEVES  
Corpl Co A 4 Ia Cav

WILLIAM S. KINYON  
Co H 4 Mich Cav

ORLANDO S. MURRAY  
Co D 11 Ohio Inf

MINERVA E. ALLEN  
b. 6 May 1854  
d. 27 Nov 1922

LILLIAN J. L. FENN  
W/o Edward P. Fenn  
27 Jan 1923

NORVAL D. WOODWORTH  
Washington  
Shipwright USNRF  
19 Feb 1923

JOHN SANDERS  
Co D 120 Ind Inf

MARY J. SANDERS  
Wife of John Sanders  
d. 13 Nov 1936

CHRISTIAN KAPPLER  
Wisconsin  
Pvt 13 US Inf  
19 Mar 1923

GEO. TITUS  
Co A 23 Mich Inf

EDITH SCHREITER  
Wife of David M. Schreiter  
d. 10 Jan 1944

Row 61

MILES MERRITT  
Co B 62 Ill Inf

LOUISA J. URBAN  
Wife of Sebastian Urban  
b. 22 Aug 1846  
d. 30 Apr 1921

SEBASTIAN URBAN  
Co A 1 USRC Mo HG  
Husb. of Louisa J.

ISAAC MURRAY  
Sgt Co F 50 Mo Inf

ELDEN C. PARLIN  
Co A 28 Me Inf

A. S. BRIDGEFARMER  
Co B 1 Ore Inf

JOHN M. BURSLEY  
Co C 4 Minn Inf

MARY ANN SPENCE  
Wife of Silas C. Spence  
1835-1921

SILAS C. SPENCE  
Sergt Co I 39 NY Inf  
Husb. of Mary Ann Spence



Row 61 (Cont.)

LEWIS G. KILLAM  
b. 9 Dec 1837  
d. 6 Jan 1929

ALEX J. POWELL  
Co I 38 Ia Vol Inf  
GAR 61-64

FLORA E. GREEN  
W/o O. Green  
1848-1925

LUCINDA M.  
Wife of Lewis G.  
b. 1 Oct 1840  
d. 24 Jul 1921

1844-1921  
ELLEN M. MITCHELL  
Wife of A.J. Powell  
1850-

Eastern Star

O. GREEN  
Co D 4 WVa Cav  
Co C 182 Ohio Inf  
H/o Flora E. Green  
1846-1922

GEORGE F. HAMMEL  
Co A 179 Ohio Inf

BENJAMIN F. SKILLEN  
Co K 3 Ia Inf

BENJAMIN F. GRIMES  
Co G 8 Iowa Inf

PHEBIE A. GRIMES "Mother"  
Wife of B.F. Grimes  
b. 27 Feb 1845  
d. 18 Feb 1922

VOLNEY GOULD SPALDING  
Pfc US Marine Corps WW 2  
b. 26 Dec 1913  
d. 1 Feb 1982

AUGUSTUS ALLGOEVER  
Co L 5 NY HA

JOHN A. VANDERHOFF  
Co F In J Cav

SVEND V. HOLM  
Pvt US Army WW 1  
b. 6 Feb 1891  
d. 4 Dec 1981

MARY PLANK  
Wife of Conrad Plank  
1847-1922

CHASE J. CALLISON  
Co G 4 Va Inf  
Sp Am War

PETTER CLAY

JAMES A. PARRISH  
Sgt Co K 12 Mich Inf

MARY A. PARRISH  
Widow of J.A. Parrish  
29 Jan 1924

GULLIEN TULLION  
3 Indpt Batty Minn LA

MORTIMER F. TAYLOR  
Co G 30 Mich Inf

CHARLES GILLPATRICK  
Cpl Co I 11 Maine Regt  
1839-1929

BENJ. CLUBINE  
Co E 11 Mich Inf

PHERIBA HARDING CLUBINE  
Widow of B.F. Clubine  
1843-1924

JOHN A. MCCONNELL  
Sgt 1 Wyo Inf  
Sp Am War

ADAH C. SEED  
Widow of Phillip Seed  
d. 25 Dec 1947

JOHN JACOBSEN  
Fireman 1Cl US Navy  
Sp Am War

Row 62

PETER BAYNE  
US Navy

Musn COMMODORE P. BYAM  
Co D 24 Ia Inf

CORNELIA G. BYAM  
Widow of Commodore Perry Byam

JAMES C. MORRISON  
Sergt Co G 1 Colo Cav

PATRICK MULLIN  
Co A 2 La Inf  
Sp Am War

SIMION L. WATKINS  
Co C 28 IA Inf

SAMUEL SMITH  
Co E 215 Pa Inf

WILLIAM W. BUTLER  
Co I 1 Del Inf

ELLA STEEN  
Wid. of John Hill  
2 Dec 1931



Row 62 (Cont.)

JOHN W. HILL  
Co ? 28 Mich Inf

ARTHUR WOLLASTON  
Co F 196 Pa Inf

ELLIOTT G. YOUNG  
Sergt Co B 111 Pa Inf

MAHLON HALL  
1846-  
MARGARET L. KIRKMAN - HALL  
1846-1924

HENRY H. DAVIES  
Co G 1 Ore Cav

SARAH E. McMINIMEE  
Wid. of J.S. McMinimee  
22 Feb 1936

JOHN S. McMINIMEE  
Corp Co A 16 Ohio Inf

SANFORD C. WEST  
Musn Co E 13 Ill Inf

ELIZABETH F. WEST  
Wife of S.C. West  
1848-1924

CLARISSA J. COLLINS  
Wid. of B.M. Collins  
22 Apr 1926

BENJ. M. COLLINS  
Corpl Co G 37 Wis Inf

JOSEPH BECKETT  
Co G 14 NY HA

SUSIE DOW  
Wid. of Washington Dow  
16 Nov 1957

WASHINGTON D. DOW  
Co H 49 Wis Inf

JOHN K. JOHNSON  
Co C 40 Wis Inf

HENRY G. PARKER  
Corpl Co K 12 Mich Inf

MARY K. FULLER  
30 Sep 1923

GEORGE KNAPP  
Co D 112 Ill Inf

LAURA A. KNAPP  
Wid. of George Knapp  
22 Feb 1929

JOSIAH R. FISHER  
Corpl Co B 123 Ohio Inf

JAS. F. CHICHESTER  
Co C 30 Ia Inf

WILLIAM B. SMITH  
Co B 41 Ill Inf

LUCY C. SMITH  
Wid. of W.B. Smith  
b. 17 Feb 1855  
d. 11 Aug 1949

BESSIE M. FAY  
Wife of Harry M. Fay  
d. 27 Apr 1944

HARRY M. FAY  
Illinois  
Sgt Co D 11 Regt Inf  
H/o Bessie M. Fay  
b. 7 Mar 1876  
d. 5 Nov 1954

Row 63

ELSIE COLE  
Wid. of M. Wilcox  
d. 25 Aug 1946

MARCUS WILCOX  
Sgt Co F 144 NY Inf

JOSEPH S. WALTERS  
Co F 103 Ill Inf

Mrs. M. E. WALTERS  
Wife of J.S. Walters  
Age 79y

JOHN BERRY  
Kimball's Mo Militia  
d. 22 Sep 1929

JOSEPH BAKER  
Co G 24 Mich Inf

HARRIET J. SHOCK  
1847-1928

MILTON E. SHOCK  
Lieut Co F 64 USC Inf

JOHN M. JACOBS  
Co G 12 Mich Inf

PHILIP J. WICKARD  
Co G 189 Ohio Inf

EDWARD McCLANAHAN  
Co E 44 Mo Inf

HANNAH McCLANAHAN  
1850-1925



Row 63 (Cont.)

ANNIE E. BELL  
Wid. of N.N. Bell  
d. 23 Dec 1924

JOHN NILSON  
Co H 1 Mont Inf  
Sp Am War

VIRGINIA A. BADER  
Wid. of Adolph Bader  
20 Dec 1924

RINALDO H. BROWN  
8 Mich Cav  
d. 1 Jan 1936

FREDDIE BROWN  
Wife of R.H. Brown  
b. 4 Jan 1851  
d. 16 Nov 1924

OLIVE CARR  
Wid. of John Carr  
d. 9 Jul 1930

JOHN CARR  
Corpl Co G 141 Pa Inf

DAVID GRANGER  
Pvt 7 US Cav  
12 Nov 1924

JOHN HARTER  
Co I 146 NY Inf

FANNIE P. VAN AMBURGH  
Wid. of Daniel S.  
d. 24 Jan 1925

DANIEL S. VAN AMBURGH  
Co I 6 Minn Inf

SARAH E. KLOCK  
"His Wife"  
13 Dec 1855

JOHN I. KLOCK  
Capt 135 USCT  
b. 16 Feb 1836  
d. 1 Nov 1924

MARTHA E. MORGAN  
b. 24 Oct 1857  
d. 20 Dec 1928

NATHAN J. MORGAN  
Co I 17 Ia Inf

ISAAC N. MAXWELL  
Co D 10 WVa Inf

MARY J. HASKILL  
Wid. of W.W. Haskill  
16 Oct 1924

KEITH M. HARD  
Pvt US Army WW 2  
b. 26 Jun 1918  
d. 3 Dec 1981

SILAS MANSFIELD  
Co K 91 NY Inf

MAY H. QUIVEY  
b. 22 Mar 1853  
d. 8 Feb 1935

JAMES QUIVEY  
Musn Co A 26 Ind Inf

OREN J. QUIVEY  
1 Cl Pvt 2 US Vol Engrs  
Sp Am War

VIRGINIA N. JEWELL  
Wid. of F.C. Jewell  
10 Aug 1937

ROMAN ANDERS  
Dist. of Columbia  
Pvt 28 US Vol Inf  
b. 6 Aug 1876  
d. 21 Feb 1945

GEORGE E. KIMBALL  
Co M 1 DC Cav

GEORGE DOYLE  
SC3 US Navy WW 2  
b. 29 Jan 1913  
d. 25 Dec 1983

CHARLES DANIEL IHLER  
Missouri  
Fireman 2 Cl US Navy  
b. 24 Jan 1870  
d. 19 Apr 1944

JAMES MADISON  
Co E 20 Kans Inf  
Sp Am War

Row 64

GEORGE JENNINGS  
Co D 15 Mass Inf

DORA J. WALTERS  
Wid. of J.H. Walters  
25 Aug 1941

EDMUND R. HOPKINS  
Co E 37 Wis Inf

JAS. NICHOLS  
Co D 6 Ohio Cav

ELIZA D. WHITE  
Wid. of G. White  
14 Dec 1940

GEORGE WHITE  
Sergt Co F 96 Ohio Inf



# COMMANDMENTS FOR GENEALOGISTS

(This was copied from the Crawford Co. KS Gen. Soc., who got it from an Illinois genealogical bulletin who admit they stole it from J.L. Philbrick.)

1. Thou shalt have no other hobbies before genealogy.
2. Thou shalt not adopt someone else's pedigree, simply because it looks better than yours, or goes back to Adam!
3. Thou shalt not bear false witness, nor doctor-up the data, regardless of how much better it makes your pedigree look.
4. Thou shalt not steal data, books, or materials from archives, libraries, or private collections.
5. Thou shalt not destroy the evidence, even if it only hints of criminality, illegitimacy or insanity.
6. Thou shalt not neglect thy spouse or offspring, in order to indulge your genealogical addiction.
7. Thou shalt never accept word-of-mouth, hearsay, or old wives tales as acceptable evidence in genealogy, even if it might support your own particular bias!
8. Thou shalt never mix coffee-drinking and genealogical research.
9. Thou shalt not make notations in genealogical books or documents even though the data do not agree with your bias or hypothesis.
10. Thou shalt never mis-shelve, misplace, or squirrel away library books or materials with the intention of keeping them for your own use, to the exclusion of other researchers.
11. Thou shalt never tear, cut, razor-blade or otherwise remove pages from genealogical materials or books.
12. Thou shalt not "hog" the Xerox machine, but thou shalt limit your xeroxing to no more than five pages when others are waiting in line.
13. Thou shalt never "hog" the microfilm reader, just to keep someone else from getting access to it.
14. Thou shalt never be discourteous to library or archival staff, nor to those who provide genealogical services for you.
15. Thou shalt never fail to enclose an SASE in your genealogical correspondence.
16. Thou shalt not "hog" all the books on Virginia, but shall limit yourself to three or four, and return them promptly for the use of others.
17. Thou shalt not "leap-frog" generations, nor work at both ends.
18. Thou shalt not whine, whimper, nor wail aloud when you run into a dead end and cannot find anything about an ancestor in the library or archives!
19. Thou shalt never shed tears on the documents--your tear drops will stain the page!
20. Thou shalt never gab, gossip, talk aloud, or otherwise engage in distracting conversation in the genealogical research area, archives, or library!

DID YOU KNOW THAT: (from Paradise Valley CA "Goldmine")

The word "infant" on a veteran's record means any child not old enough to read--not necessarily a babe-in-arms.

Tax collectors in early days were exempt from Tax Rolls, hence their names would not appear. Same applies to teachers, sheriffs, the governor, militia personnel and physicians.

Inside stairways were taxable as well as windows and chimneys. Outside stairways were not.

If you found a double tax on your ancestor, it could mean he was Roman Catholic.